

Hitachi Vegetation Manager

A closed-loop, data-driven system powering vegetation planning, management, and operations workflows to improve reliability and business resilience.



Climate change is impacting grid reliability

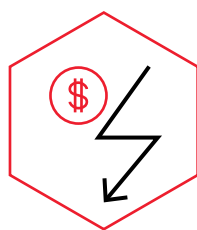
HIDDEN HAZARD TREES



70%

Of trees that caused sustained outages appeared healthy from inspections.¹

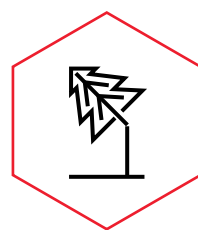
PRESSURE ON PROFIT



25%

Increase in maintenance expenditures primarily from vegetation management costs due to climate change.²

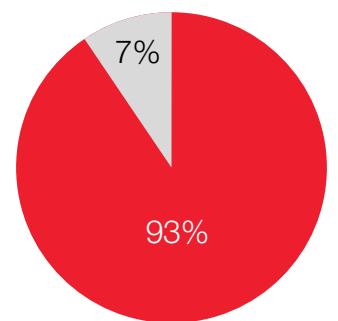
DETERIORATING RELIABILITY



8%

Annual growth in sustained outages due to vegetation.¹

STAFF INEFFICIENCIES

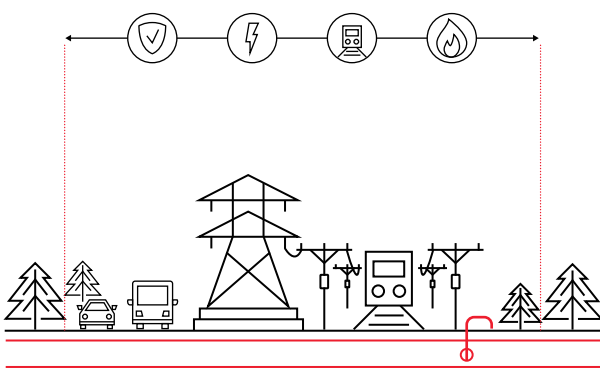


93% of vegetation management time is spent on low-value, time-consuming activities. Only 7% is dedicated towards critical planning efforts.³

Innovation

Hitachi Vegetation Manager enables better, faster, and more informed decision-making by combining satellite data in the back-office with ground-level insights from field devices.

End-to-End Corridor Management Across Linear Asset Industries



Key benefits of Hitachi Vegetation Manager

Predict emergent risks

Identify current and future risks and hazards that were previously undetected by traditional inspection methods

Optimize planning

Data-driven decision support to minimize the impact to your assets and improve your bottom line

Single source of truth

Centralized vegetation management from imagery to workforce planning to contractor performance

Better data, better operations

- 1 Know more**
Digitalize institutional knowledge to easily share data across your organization for better decision making around risk management, work assignments, and program costs.
- 2 See more**
Connect field insights with back-office planning to get near real-time visibility of emergent threats, field crew progress, and asset conditions.
- 3 Work smarter**
Eliminate manual processes by automating low value time-consuming tasks to free staff for more important activities like work planning and coordination.



Based on ground truth studies in a pilot project, vegetation infringement, health, and risk models produced by Hitachi Vegetation Manager were found to be over 90% accurate out-of-the-box.³

Learn more about Hitachi Vegetation Manager



Visit website



Schedule a demo



Watch a video

¹ Source: NERC, CMEP and Vegetation Reports
² Source: Fant et al., 2020. Climate change impacts and costs to U.S. electricity transmission and distribution infrastructure. Energy, 195
³ Source: Internal analysis