

SACE Emax 3



1SDH002310A1603

AUP - Contatti di segnalazione in inserito/test/estratto - E2.3 -E4.3 -E6.3

AUP - Connected/isolated for test/disconnected signalling contacts - E2.3 -E4.3 -E6.3

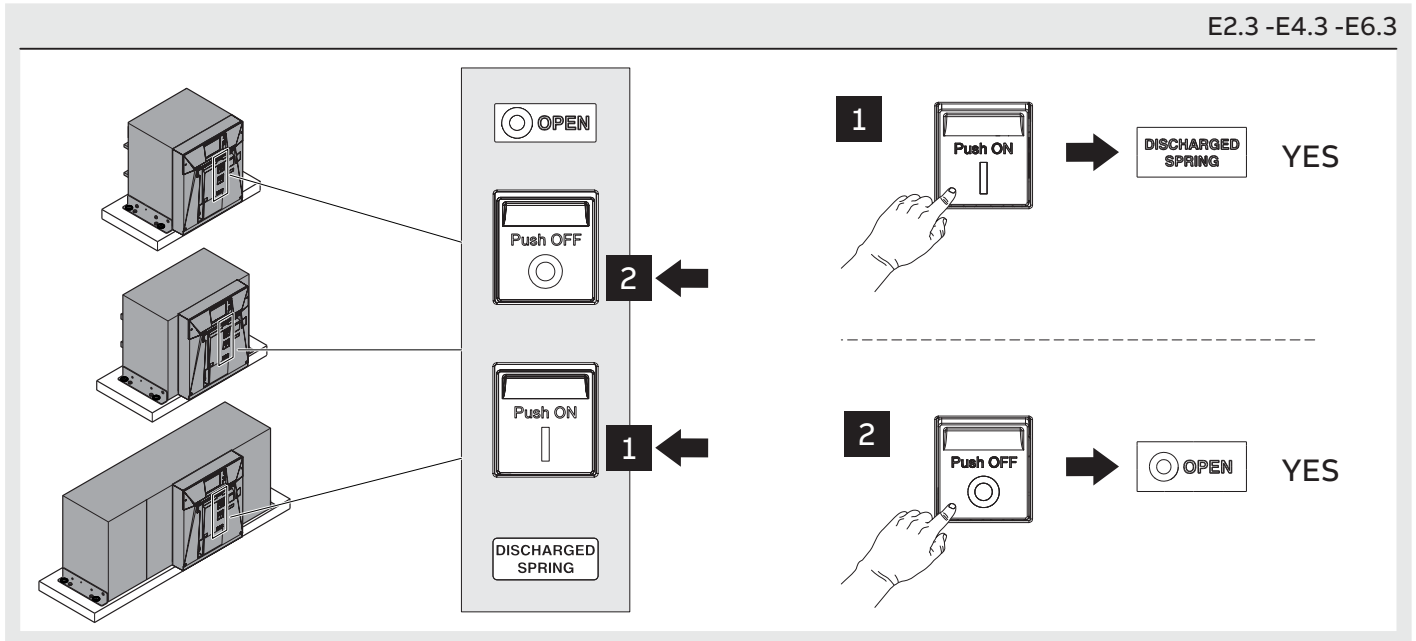
AUP - Meldekontakte in Betriebsstellung/Trennstellung für Prüfung/Außenstellung - E2.3 -E4.3 -E6.3

AUP - Contacts de signalisation embroché/essai/débroché - E2.3 -E4.3 -E6.3

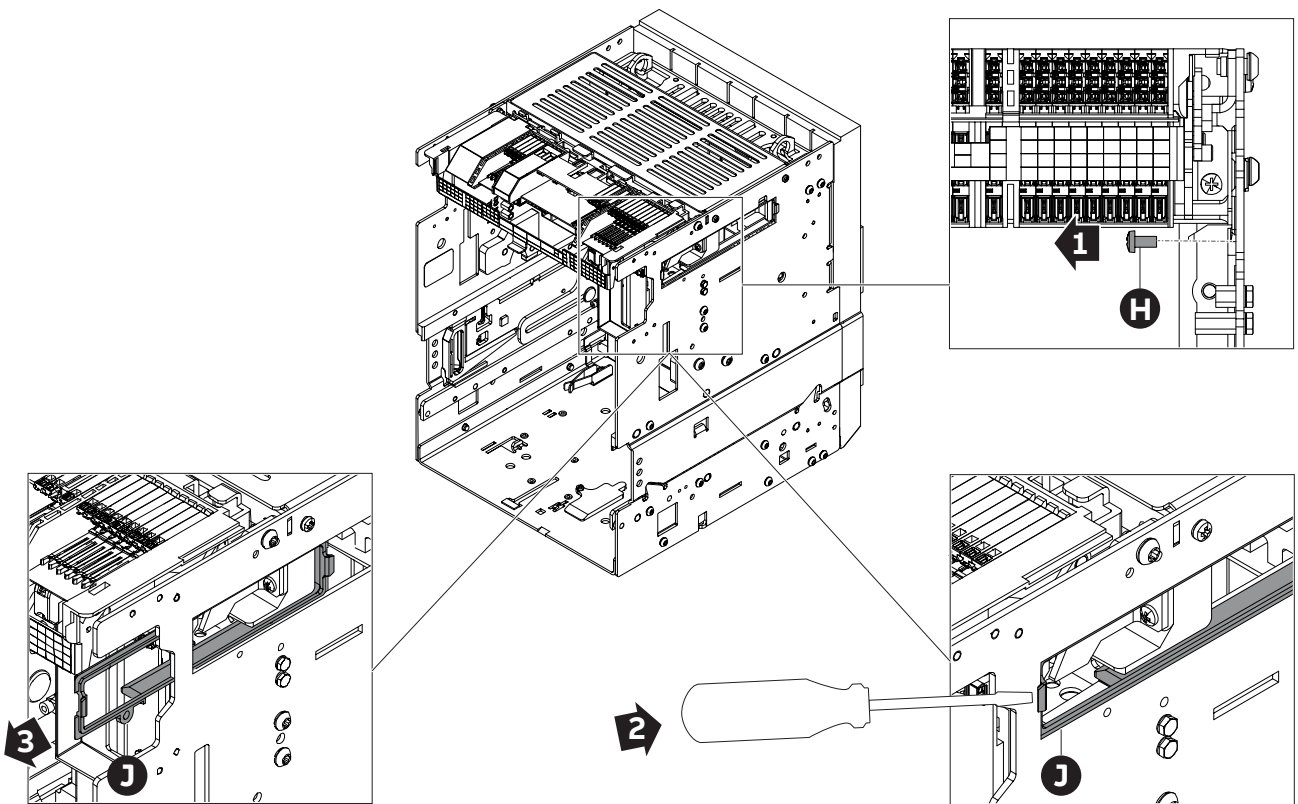
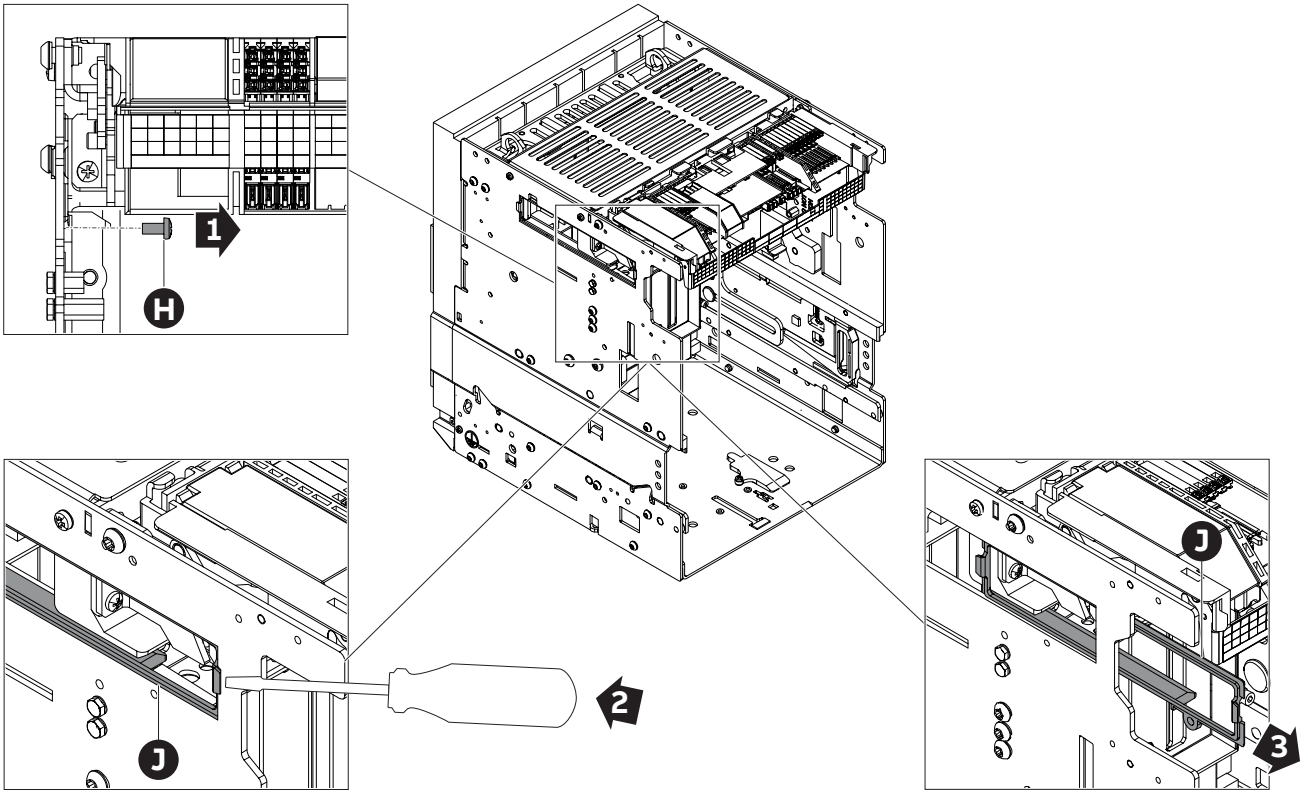
AUP - Contactos de señalización en posición insertado/prueba/extraído - E2.3 -E4.3 -E6.3

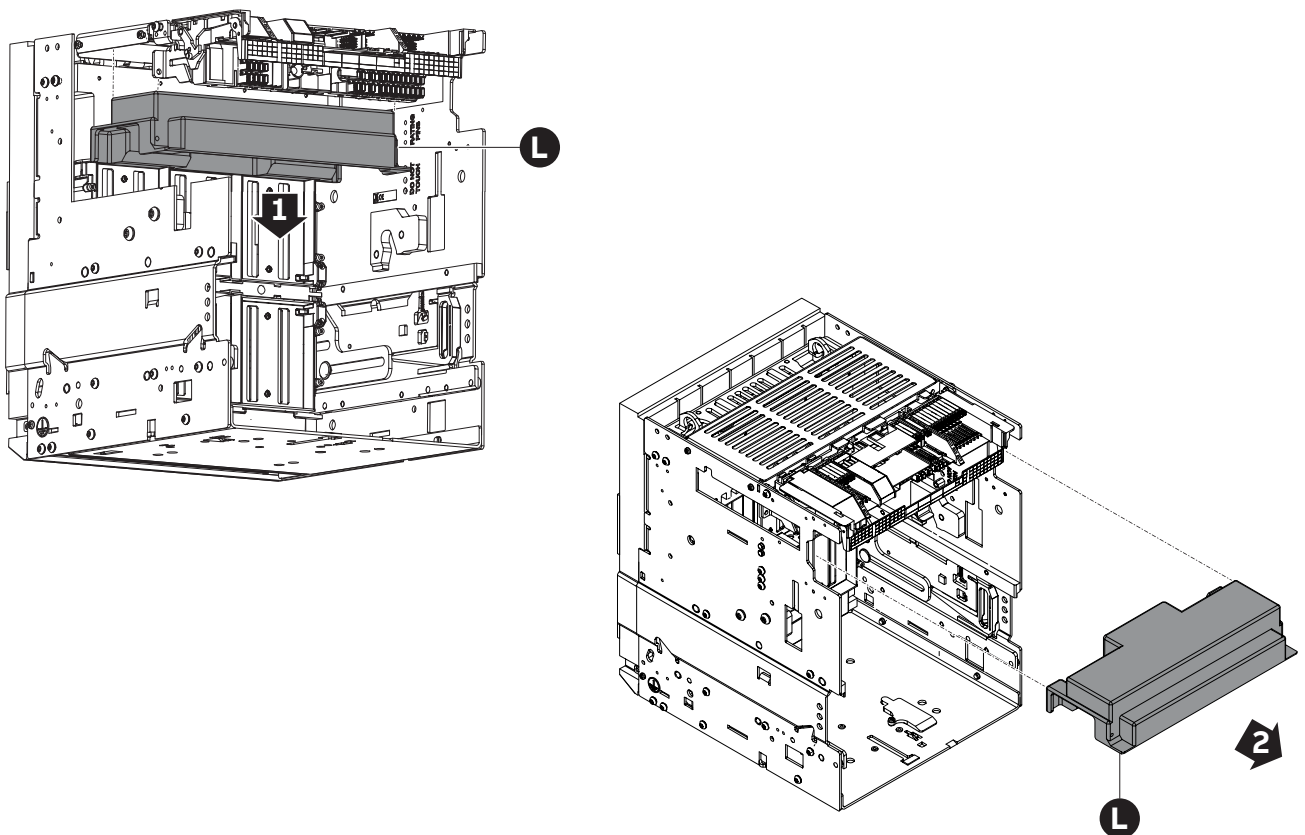
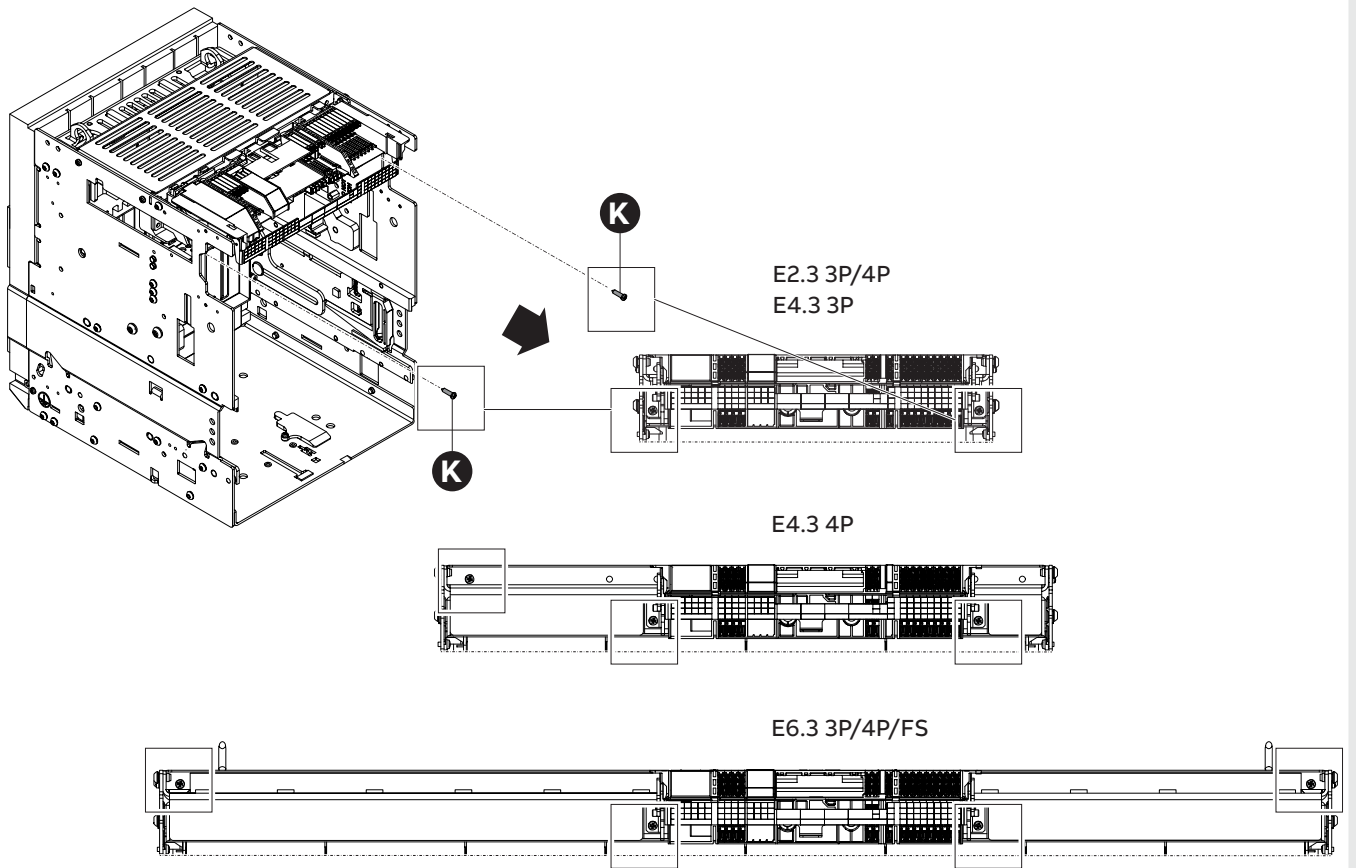
AUP - 信号触点开/测试/拔下 - E2.3 -E4.3 -E6.3

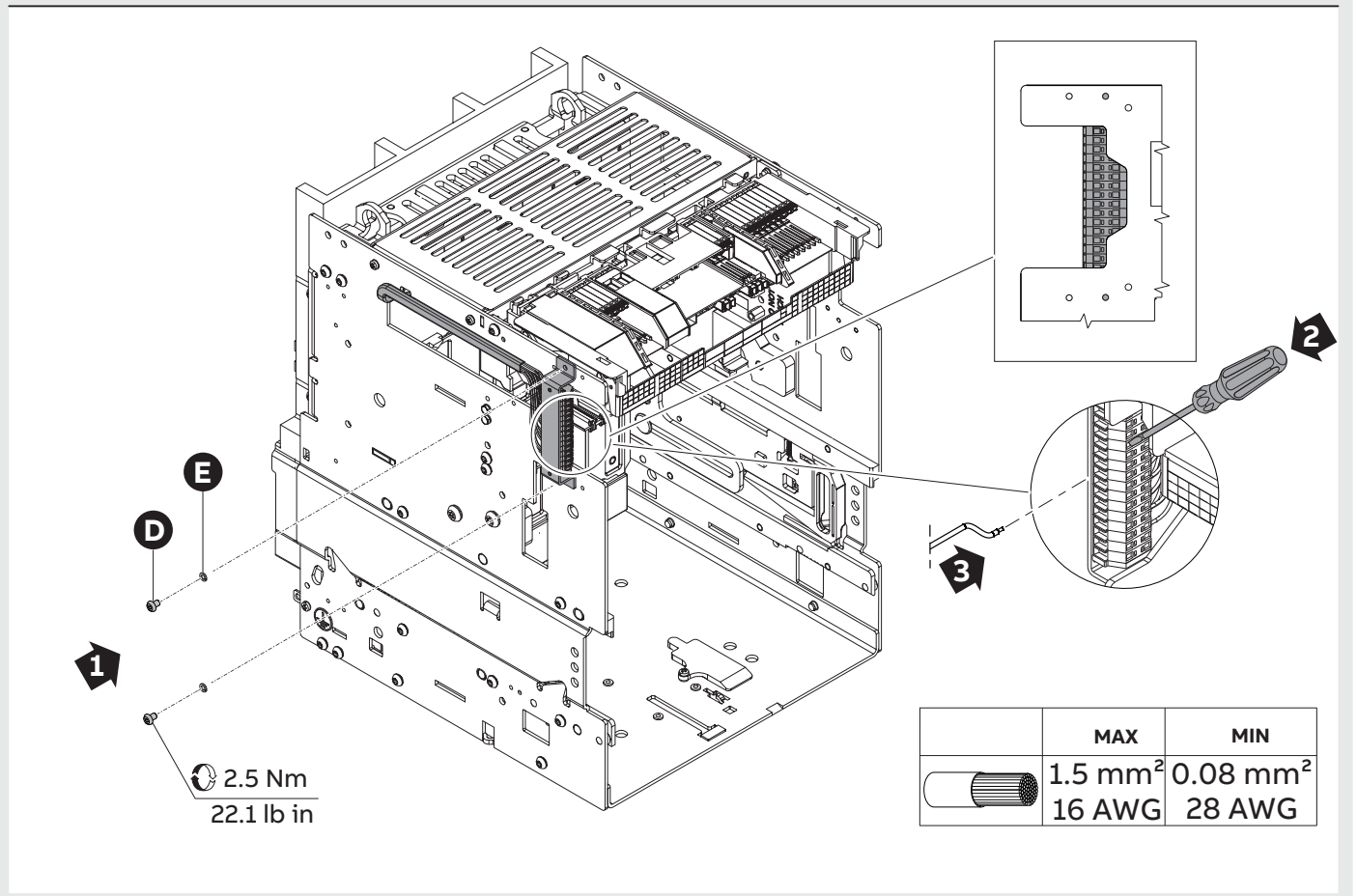
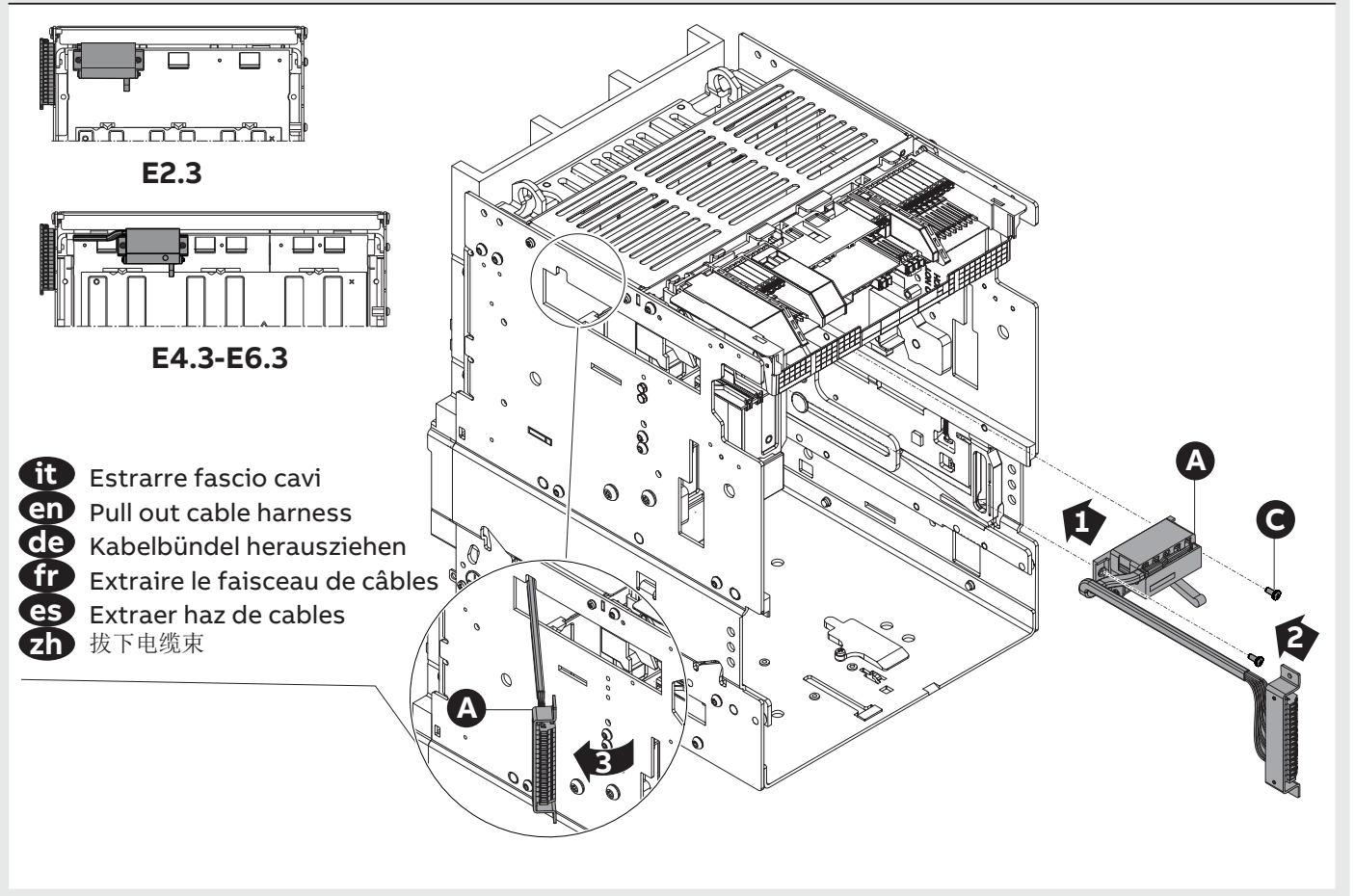
E2.3 -E4.3 -E6.3

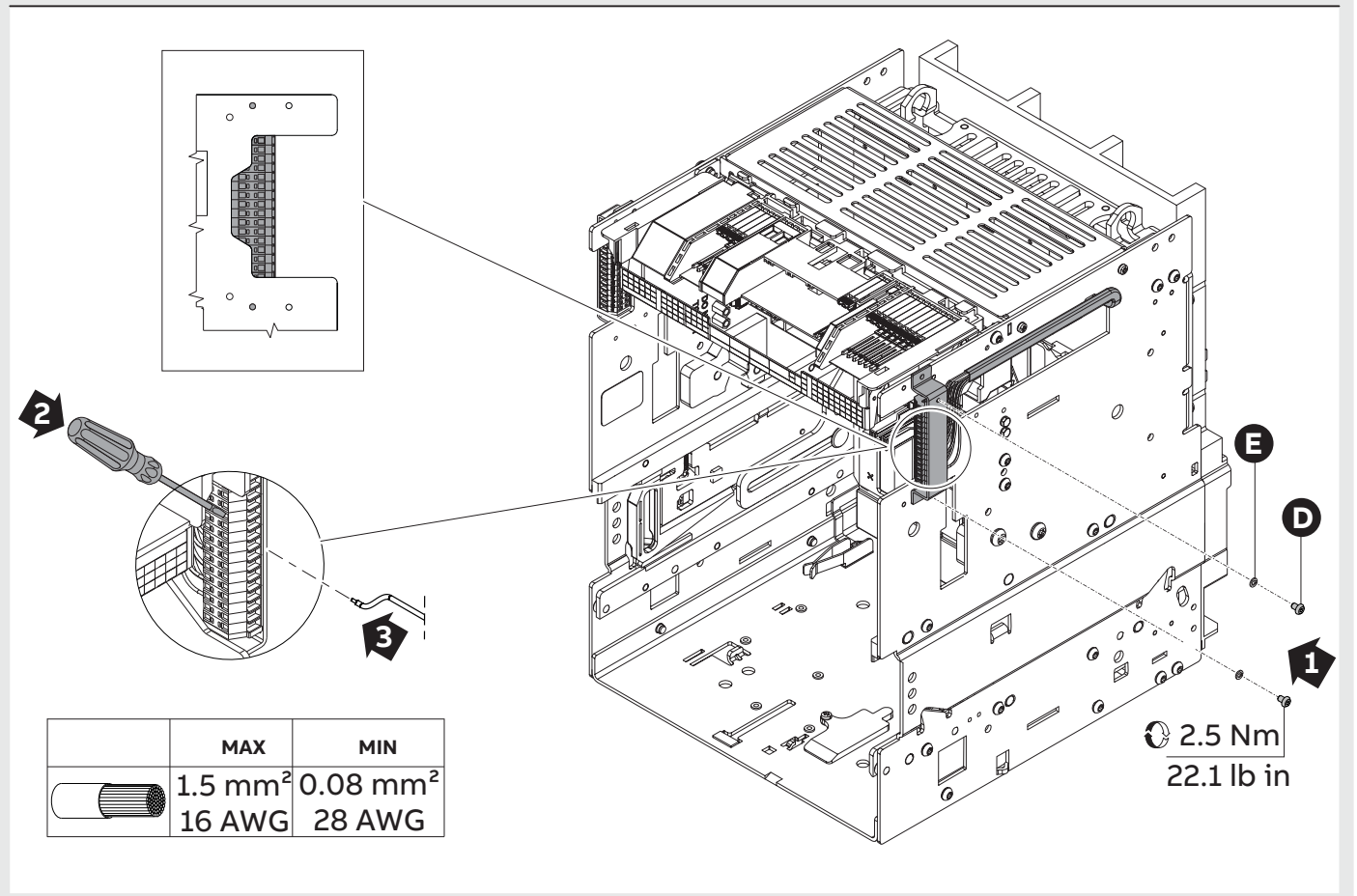
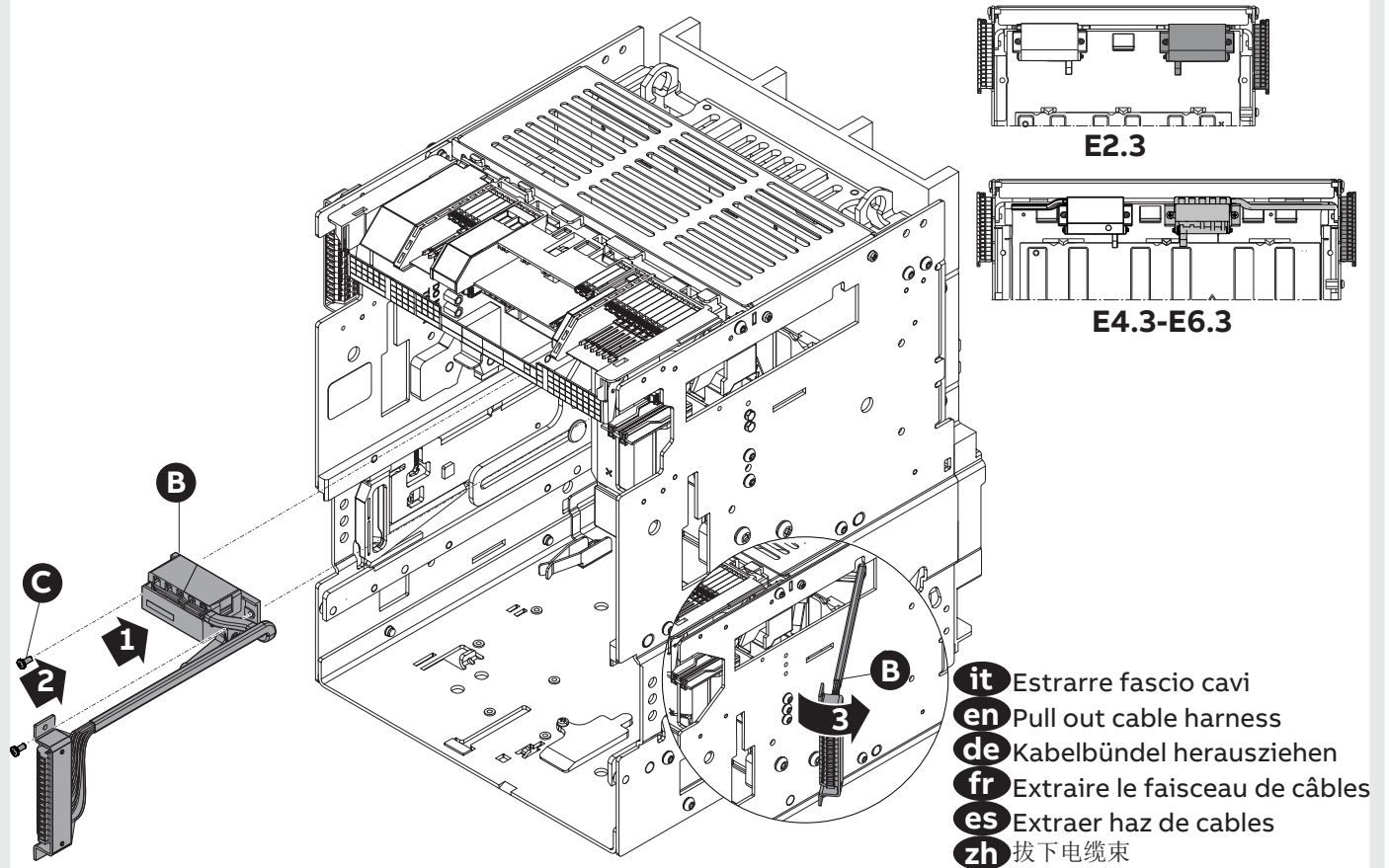


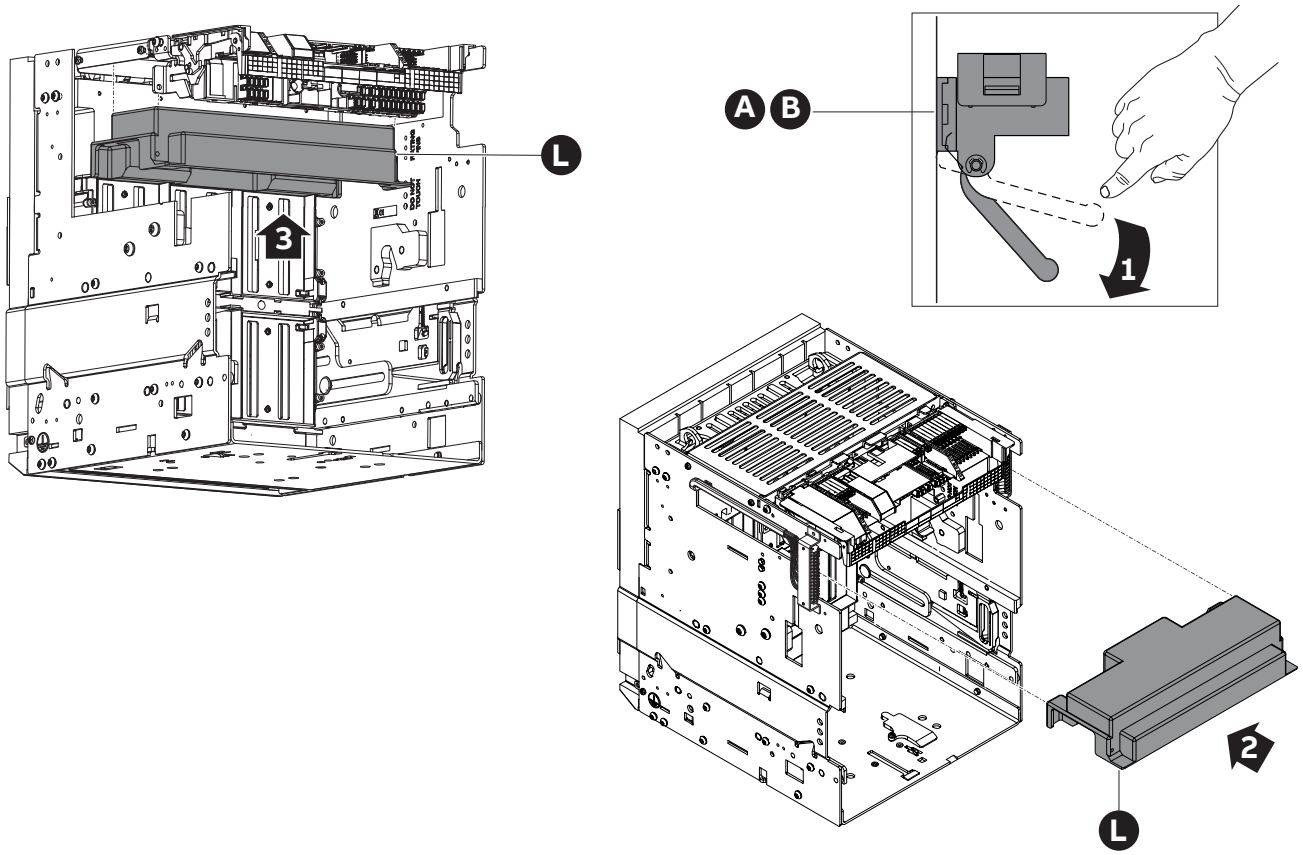
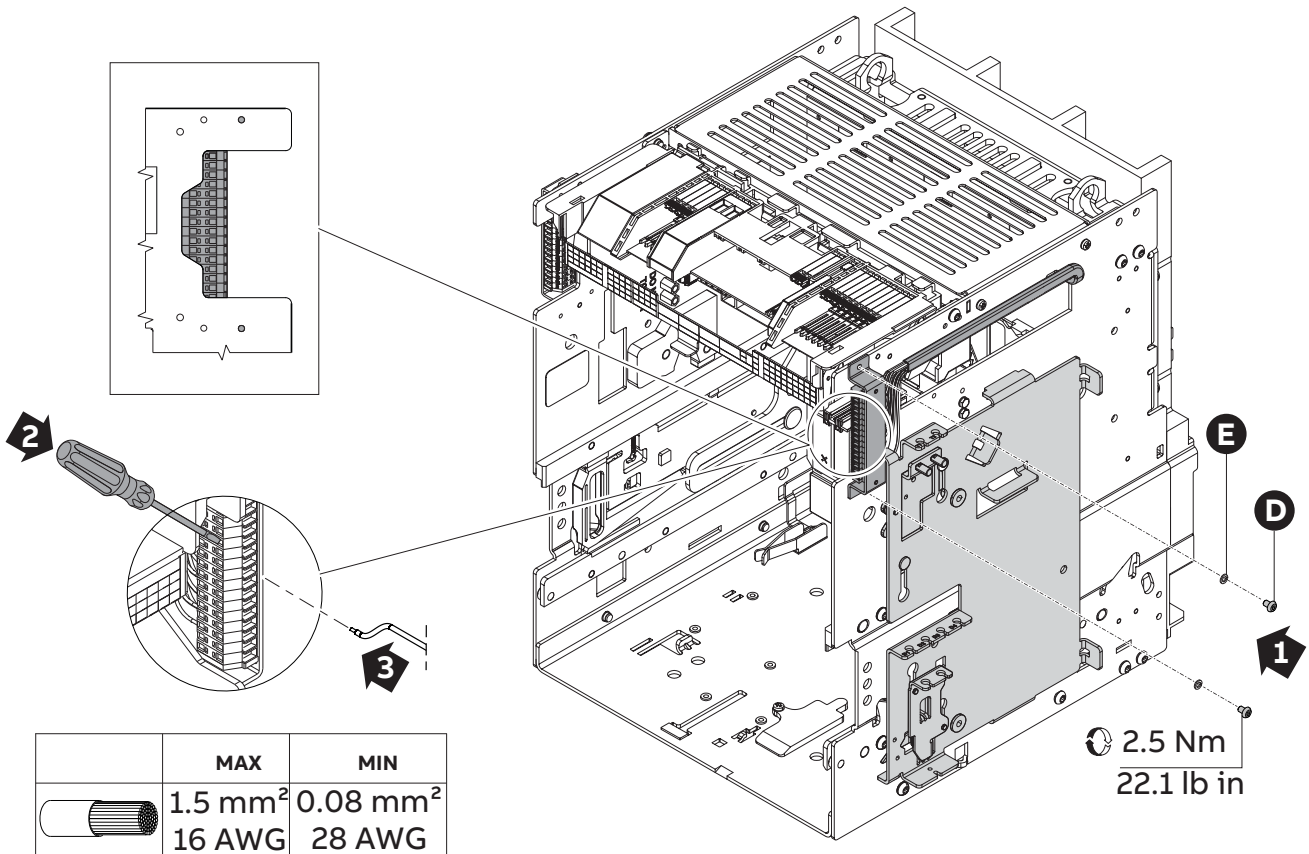
	A	B	C	D	E	F	G
	101...144	151...194	3.9x9.5	M4x6			
400Vac Left 2I/1T/2E	1	-	2	2	2	2	2
400Vac Right 2I/1T/2E	-	1	2	2	2	2	2
24Vac Left 2I/1T/2E	1	-	2	2	2	2	2
24Vac Right 2I/1T/2E	-	1	2	2	2	2	2
400Vac Right 1I/3T/1E	-	1	2	2	2	2	2
24Vac Left 4I/1E	1	-	2	2	2	2	2
400Vac Left 4I/1E	1	-	2	2	2	2	2

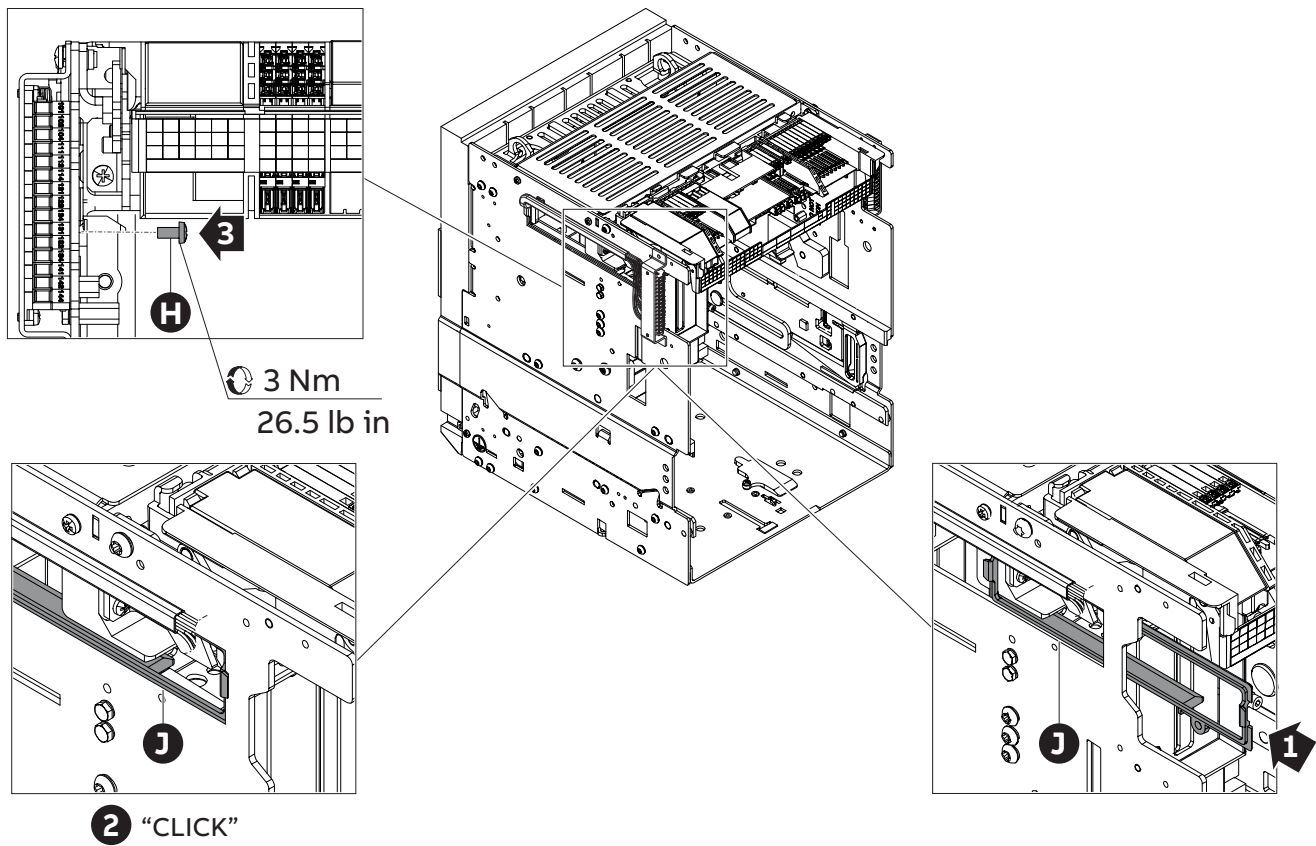
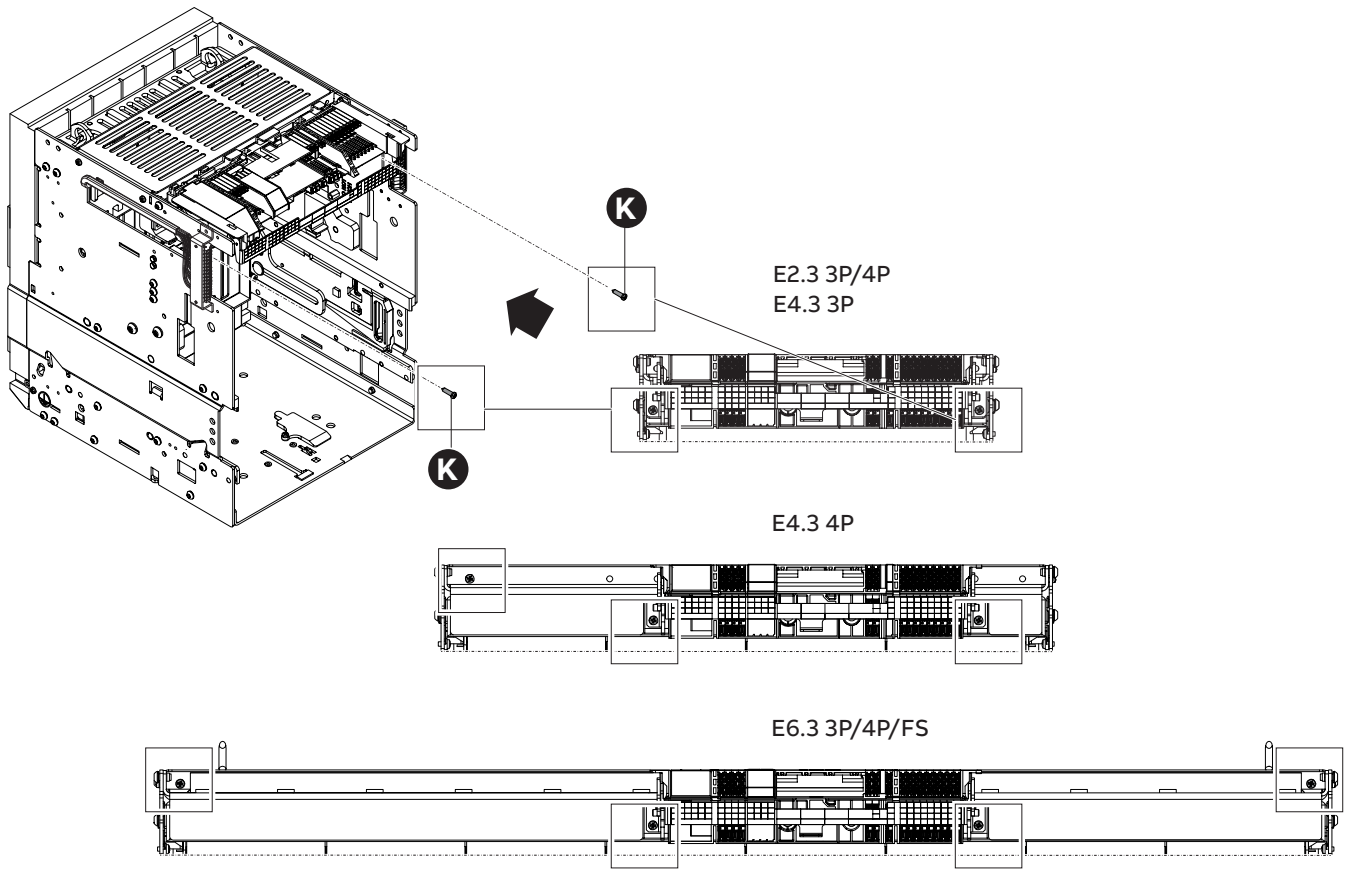


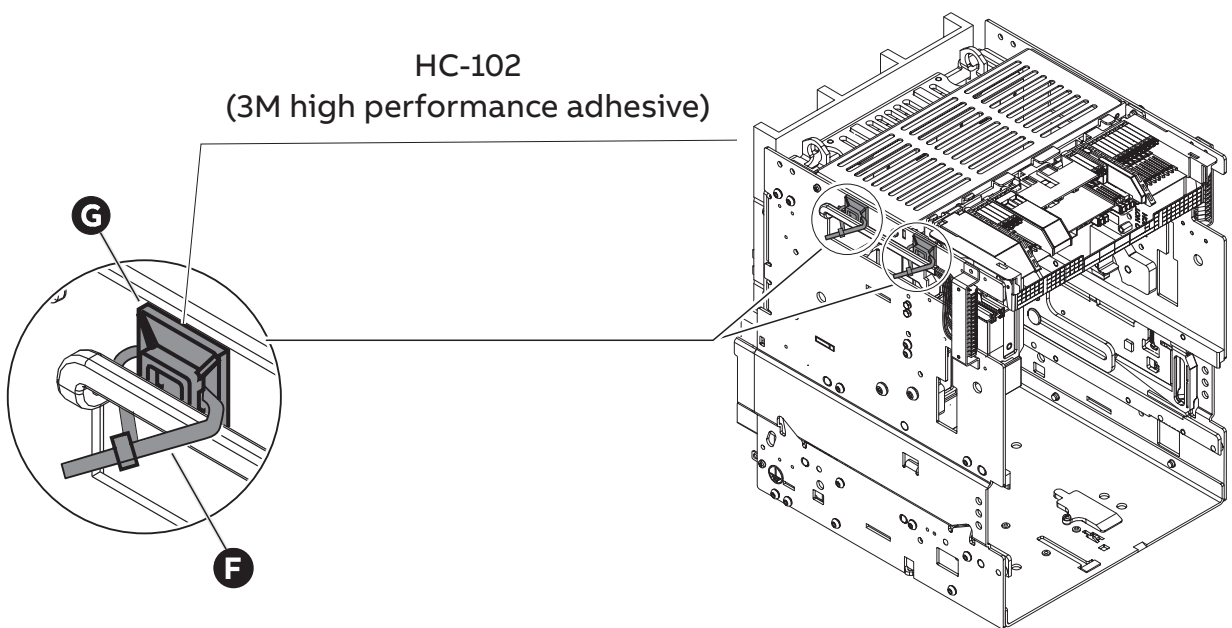
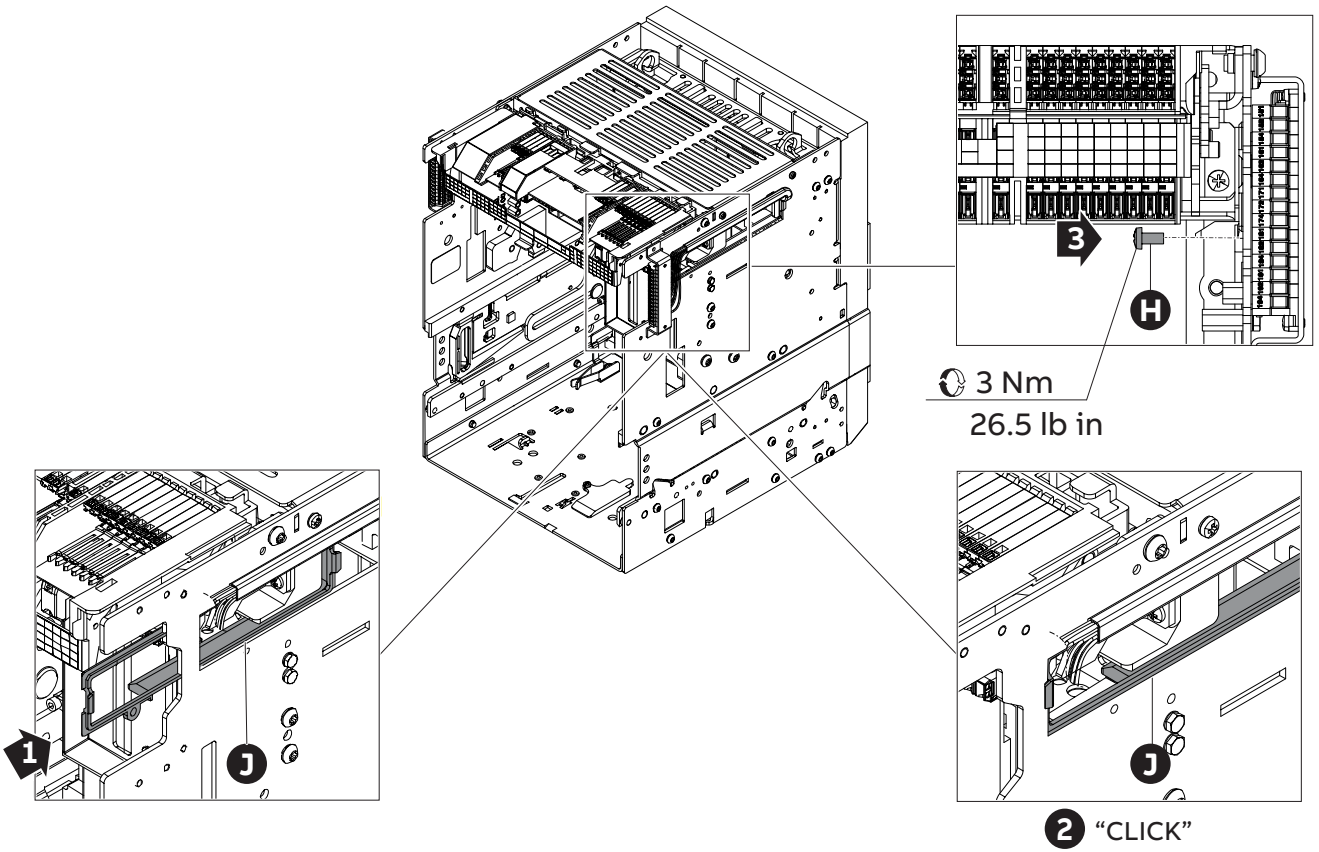




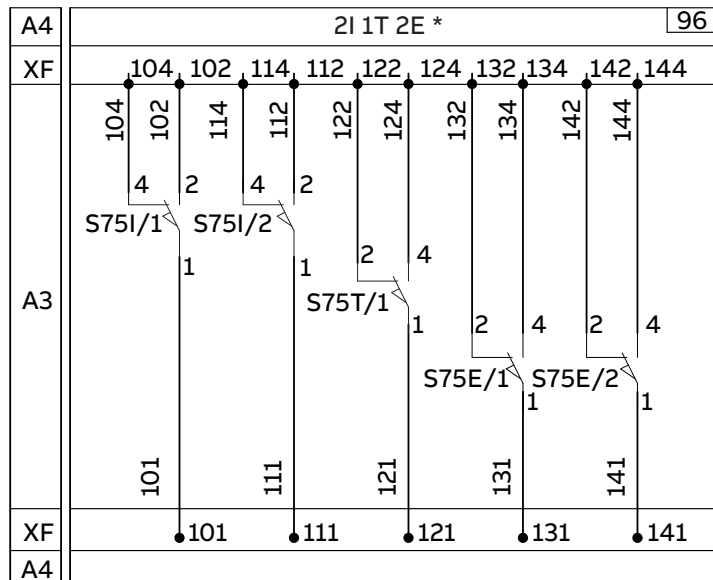




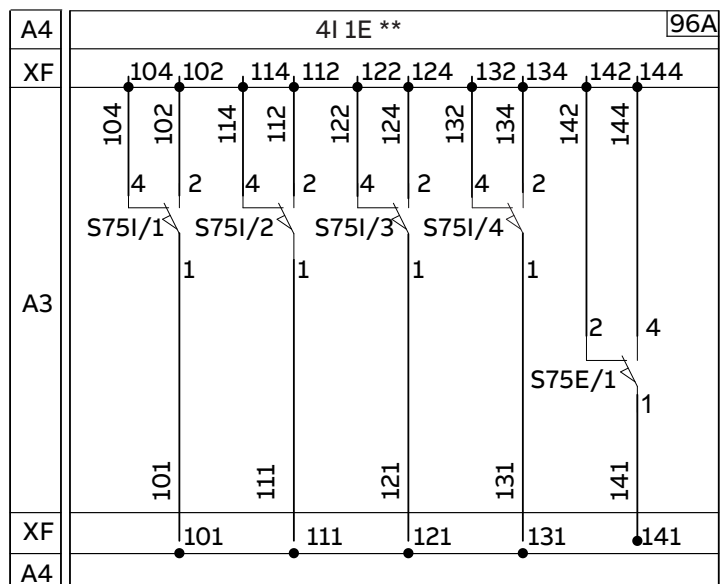




- it** **In alternativa alla fig.96
- en** **As alternative to fig.96
- de** **Als Alternative zu Abb.96
- fr** **En alternative au fig.96
- es** **Como alternativa a fig.96
- zh** 代替图96



- it** *In alternativa alla fig.96A
- en** *As alternative to fig.96A
- de** *Als Alternative zu Abb.96A
- fr** *En alternative au fig.96A
- es** *Como alternativa a fig.96A
- zh** 代替图96A

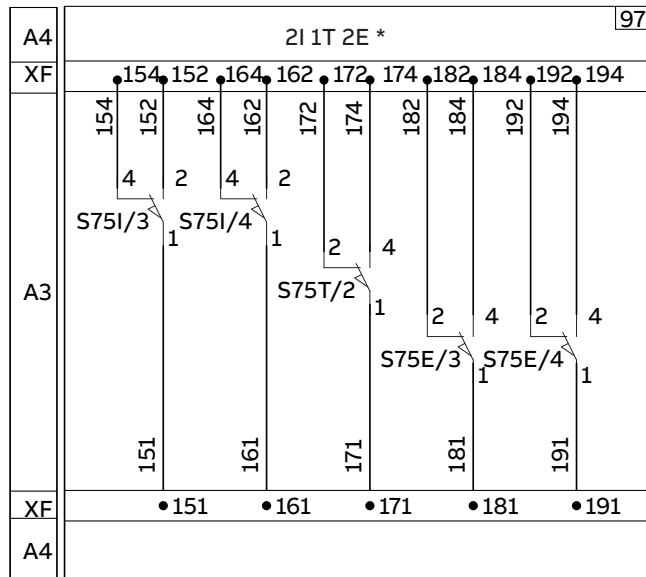


- it** Schema elettrico con interruttore in posizione inserito
- en** Circuit diagram with circuit-breaker in racked-in position
- de** Schaltbild mit Leistungsschalter in der Betriebsstellung garantiert
- fr** Schéma électrique avec le disjoncteur en position embroché
- es** Esquema eléctrico con interruptor en posición insertado
- zh** 断路器开启时的电路图

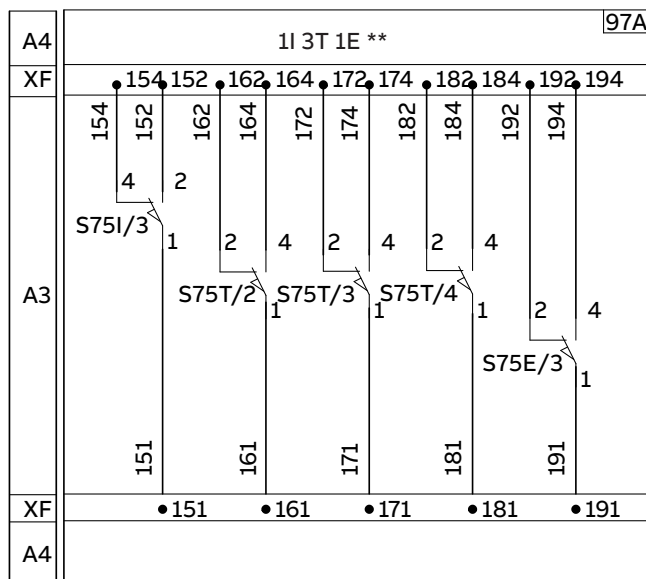
2I 1T 2E Fig.96	Contact	Pins	Inserito Connected	Test	Estratto Disconnected
	S75I/1	101-102	0	1	1
	S75I/1	101-104	1	0	0
	S75I/2	111-112	0	1	1
	S75I/2	111-114	1	0	0
	S75T/1	121-122	1	0	1
	S75T/1	121-124	0	1	0
	S75E/1	131-132	1	1	0
	S75E/1	131-134	0	0	1
	S75E/2	141-142	1	1	0
	S75E/2	141-144	0	0	1

4I 1E Fig.96A	Contact	Pins	Inserito Connected	Test	Estratto Disconnected
	S75I/1	101-102	0	1	1
	S75I/1	101-104	1	0	0
	S75I/2	111-112	0	1	1
	S75I/2	111-114	1	0	0
	S75I/3	121-122	0	1	1
	S75I/3	121-124	1	0	0
	S75I/4	131-132	0	1	1
	S75I/4	131-134	1	0	0
	S75E/1	141-142	1	1	0
	S75E/1	141-144	0	0	1

- it** **In alternativa alla fig.97
- en** **As alternative to fig.97
- de** **Als Alternative zu Abb.97
- fr** **En alternative au fig.97
- es** **Como alternativa a fig.97
- zh** 代替图97



- it** *In alternativa alla fig.97A
- en** *As alternative to fig.97A
- de** *Als Alternative zu Abb.97A
- fr** *En alternative au fig.97A
- es** *Como alternativa a fig.97A
- zh** 代替图97A



- it** Schema elettrico con interruttore in posizione inserito
- en** Circuit diagram with circuit-breaker in racked-in position
- de** Schaltbild mit Leistungsschalter in der Betriebsstellung garantiert
- fr** Schéma électrique avec le disjoncteur en position embroché
- es** Esquema eléctrico con interruptor en posición insertado
- zh** 断路器开启时的电路图

2I 1T 2E Fig.97	Contact	Pins	Inserito Connected	Test	Estratto Disconnected
	S75I/3	151-152	0	1	1
	S75I/3	151-154	1	0	0
	S75I/4	161-162	0	1	1
	S75I/4	161-164	1	0	0
	S75T/2	171-172	1	0	1
	S75T/2	171-174	0	1	0
	S75E/3	181-182	1	1	0
	S75E/3	181-184	0	0	1
	S75E/4	191-192	1	1	0
	S75E/4	191-194	0	0	1

1I 3T 1E Fig.97A	Contact	Pins	Inserito Connected	Test	Estratto Disconnected
	S75I/3	151-152	0	1	1
	S75I/3	151-154	1	0	0
	S75T/1	161-162	1	0	1
	S75T/1	161-164	0	1	0
	S75T/2	171-172	1	0	1
	S75T/2	171-174	0	1	0
	S75T/3	181-182	1	0	1
	S75T/3	181-184	0	1	0
	S75E/3	191-192	1	1	0
	S75E/3	191-194	0	0	1



abb.com

© Copyright 2024 ABB. All rights reserved.
Specifications subject to change without notice.

