

OPERATION INSTRUCTION

PROGRAMMING CABLE TK503 / TK504 USB DRIVER INSTALLATION



Contents

1	Introduction and Basics	3
1.1	Intended Use	3
1.2	PC System Requirements	3
1.3	Content of the Installation Package	3
2	Installation	4
2.1	Installation Steps	4
2.2	Pre-Installation Routine	4
3	Communication	6
3.1	Virtual Communication Port Configuration	6
4	Automation Builder Communication	8
5	Uninstallation / Update	10

1 Introduction and Basics

1.1 Intended Use

The TK503/TK504 programming cable can be used to operate and to configure the PLC via a PC or laptop. For this, CODESYS software, driver and utility programs must be installed and a TK503 or TK504 programming cable must be connected.



NOTICE!

The TK503/TK504 programming cable cannot be used for AC500 V3 Processor Modules.

1.2 PC System Requirements








- Platform: Microsoft Windows Vista, Windows 7, Windows 10
- CD-ROM drive
- USB port available for connecting the TK503/TK504 programming cable



NOTICE!

Microsoft, Windows and the Windows logo are trademarks of Microsoft Corporation in the USA and/or other countries. All other product and company names are trademarks of their respective owners.

1.3 Content of the Installation Package

Name	Type
 x64	File folder
 x86	File folder
 setup.ini	Configuration settings
 slabvcp.cat	Security Catalog
 slabvcp.inf	Setup Information
 TK503_TK504_Driver_Installation.pdf	Adobe Acrobat Document
 TK503_TK504_Installer.exe	Application


2 Installation

2.1 Installation Steps

Before you can use the TK503/TK504 programming cable, the appropriate USB driver must be installed on your PC or laptop.

The driver for the TK503/TK504 programming cable is installed in two steps:


- Pre-installation of the driver on your PC using the program *TK503_TK504_Installer.exe*.
- Installation of the new hardware in Windows after the TK503 programming cable or TK504 programming cable is plugged in for the first time.

	<p>NOTICE!</p> <p>Before you connect the TK503/TK504 programming cable with the PC, install the USB driver first.</p>
---	--

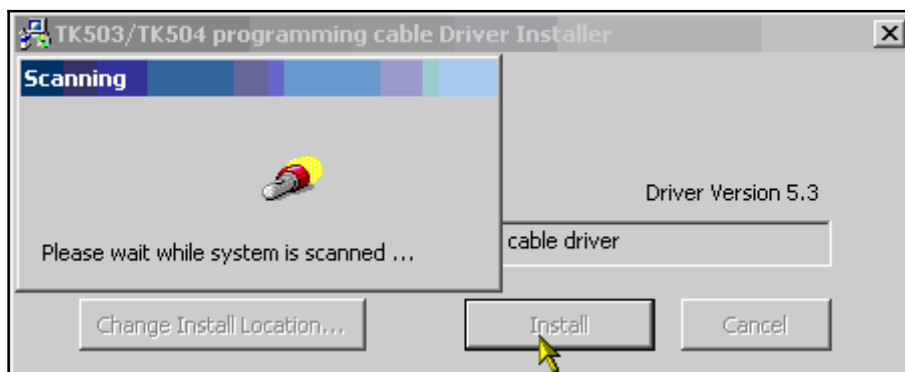
2.2 Pre-Installation Routine

1. Uninstall all existing versions of the driver software.
2. Start the pre-installation of the driver by calling *TK503_TK504_Installer.exe*.

Name	Type
x64	File folder
x86	File folder
setup.ini	Configuration settings
slabvcp.cat	Security Catalog
slabvcp.inf	Setup Information
TK503_TK504_Driver_Installation.pdf	Adobe Acrobat Document
TK503_TK504_Installer.exe	Application

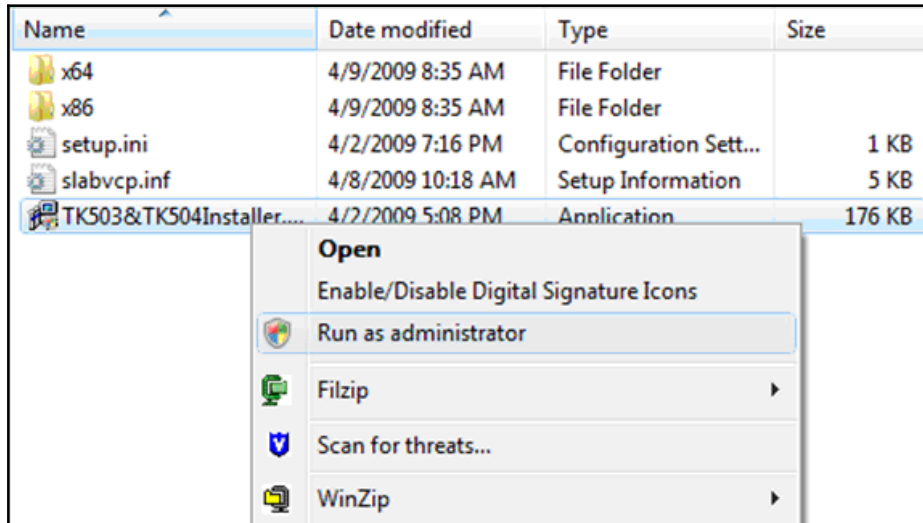
	<p>NOTICE!</p> <p>You must have administrator rights to run the installation.</p>
---	--

3. Define the installation directory and click **Install**.



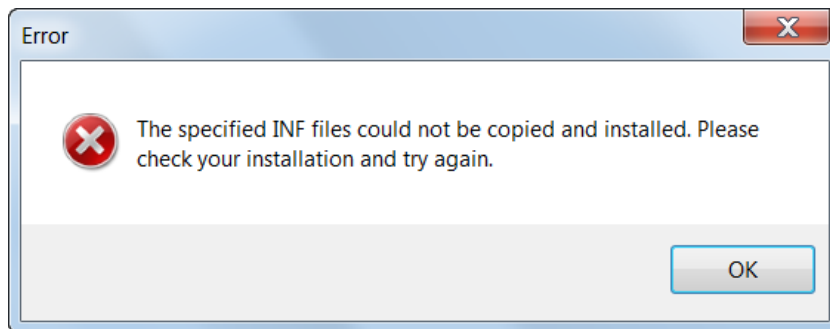
Windows Vista users only:

Start the *TK503&TK504Installer.exe* with the **Run as administrator** option, even if you have administrator rights. Acknowledge the following dialog with **Allow**.

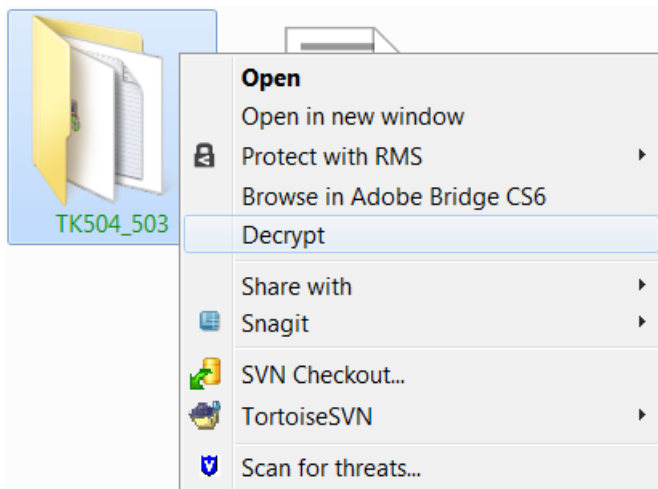


Windows 7 users only:

Windows will display an error message after clicking **Install**.



On this condition, decrypt the installation folder:



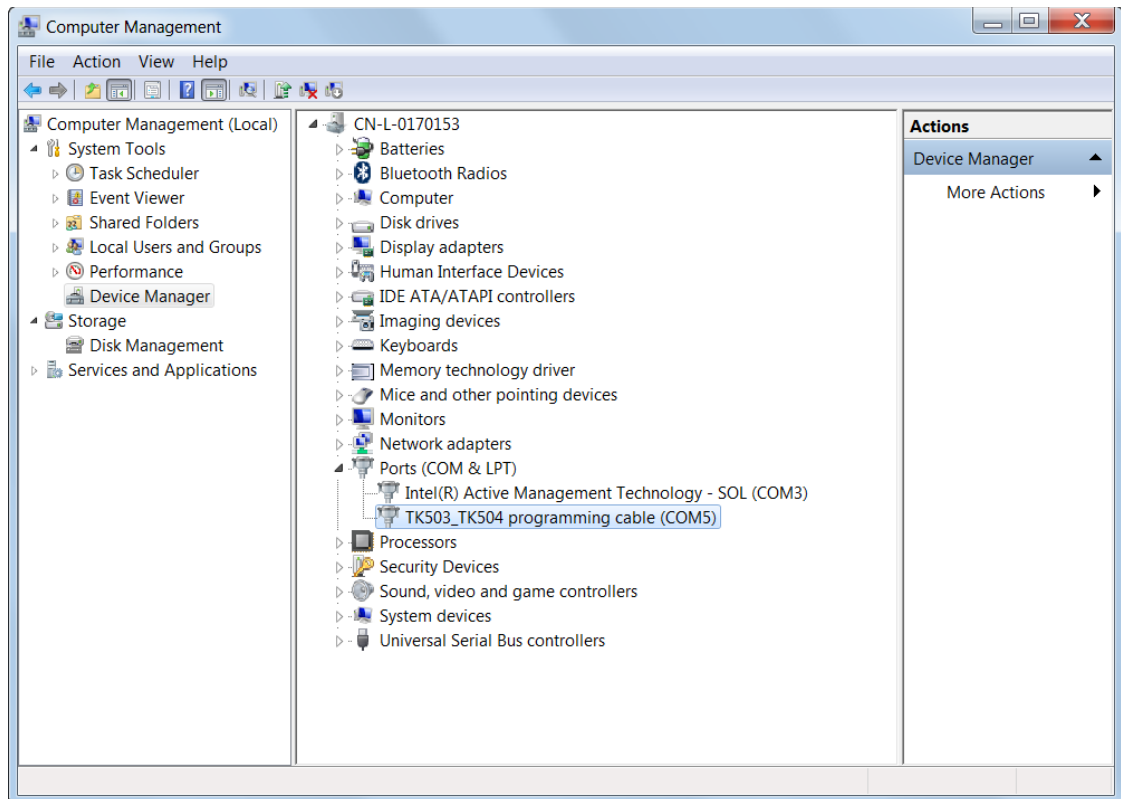
Then, start *TK503_TK504_Installer.exe* with the **Run as administrator** option again.

3 Communication

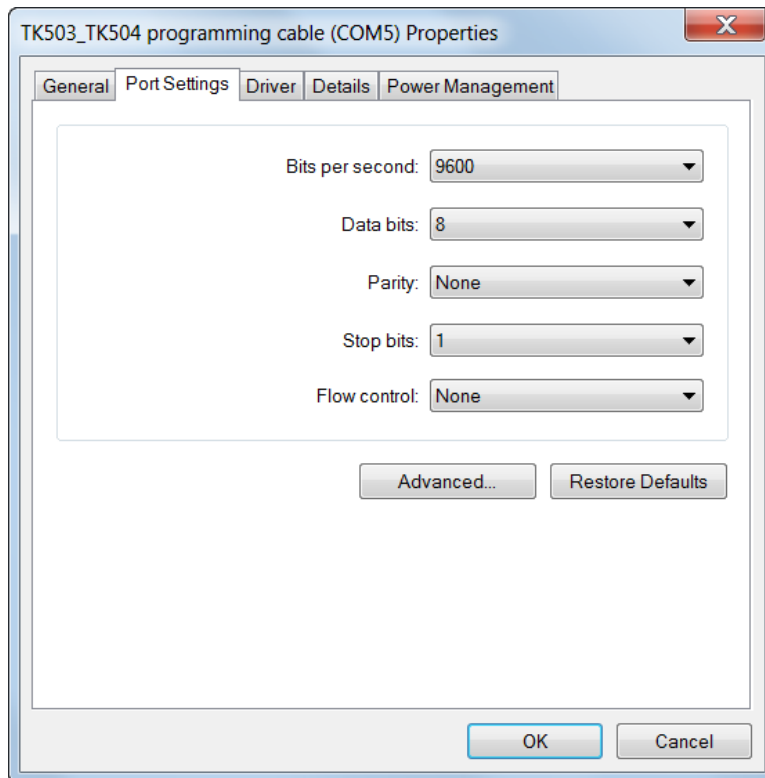
3.1 Virtual Communication Port Configuration

If the TK503/TK504 programming cable is plugged in a USB interface, Windows creates a virtual communication port (COM port).

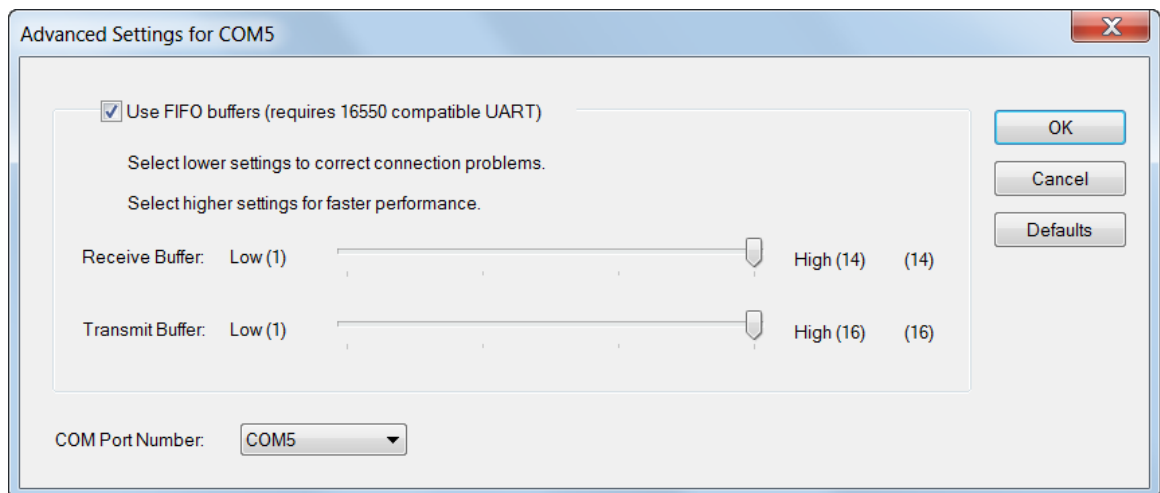
All communication ports can be viewed in the Windows Control Panel under Device Manager.



4. In the Ports settings click **Properties** to set the baud rate.



5. Set the COM port number under **Advanced** (up to COM32).

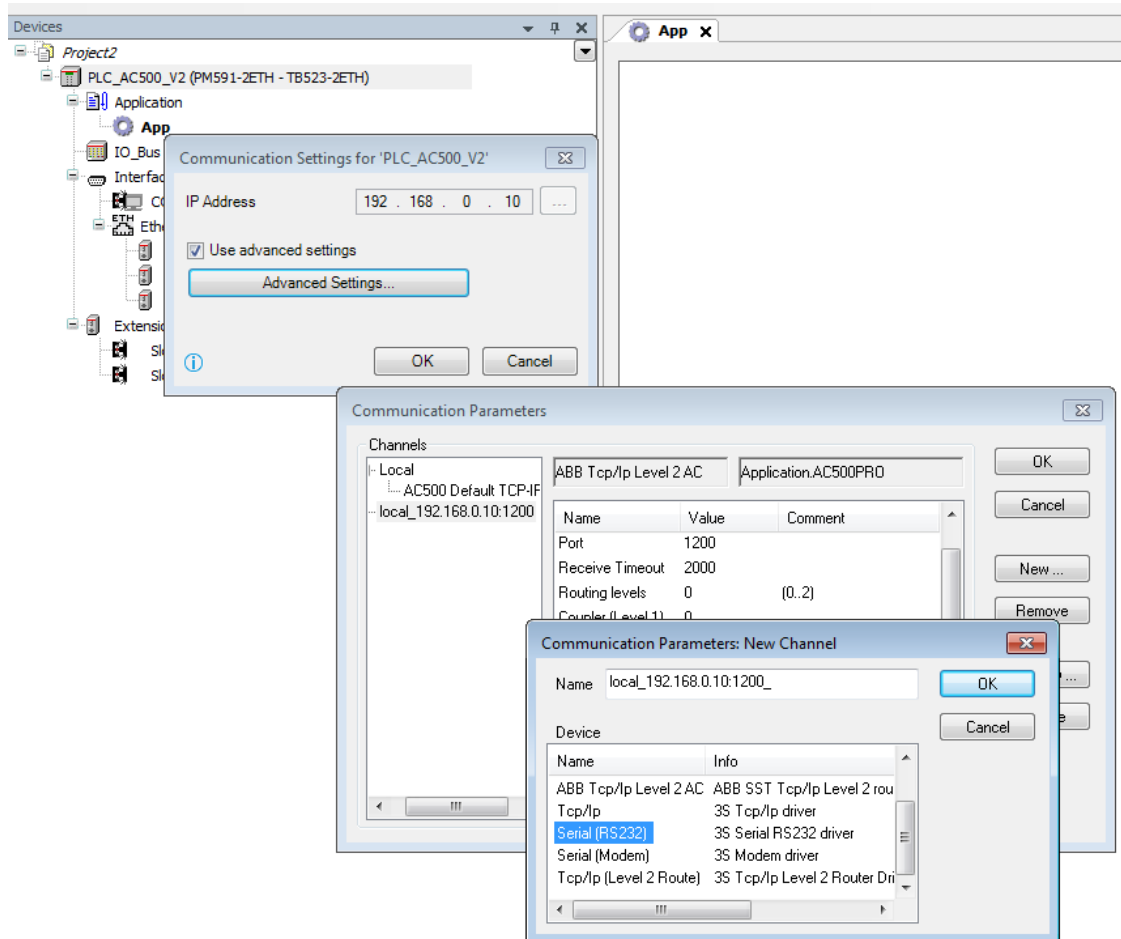


NOTICE!

When configuring the communication connection in CODESYS, the baud rate can also be set separately for each COM connection.

4 Automation Builder Communication

1. Install TK503/TK504 programming cable driver.
2. Connect the TK503 or TK504 programming cable to a PC or laptop. Windows detects the new hardware – complete the installation.
3. Start Automation Builder and open the project.
4. Right-click the PLC root node and select **Communication Parameters**.
5. Select the new virtual COM port.



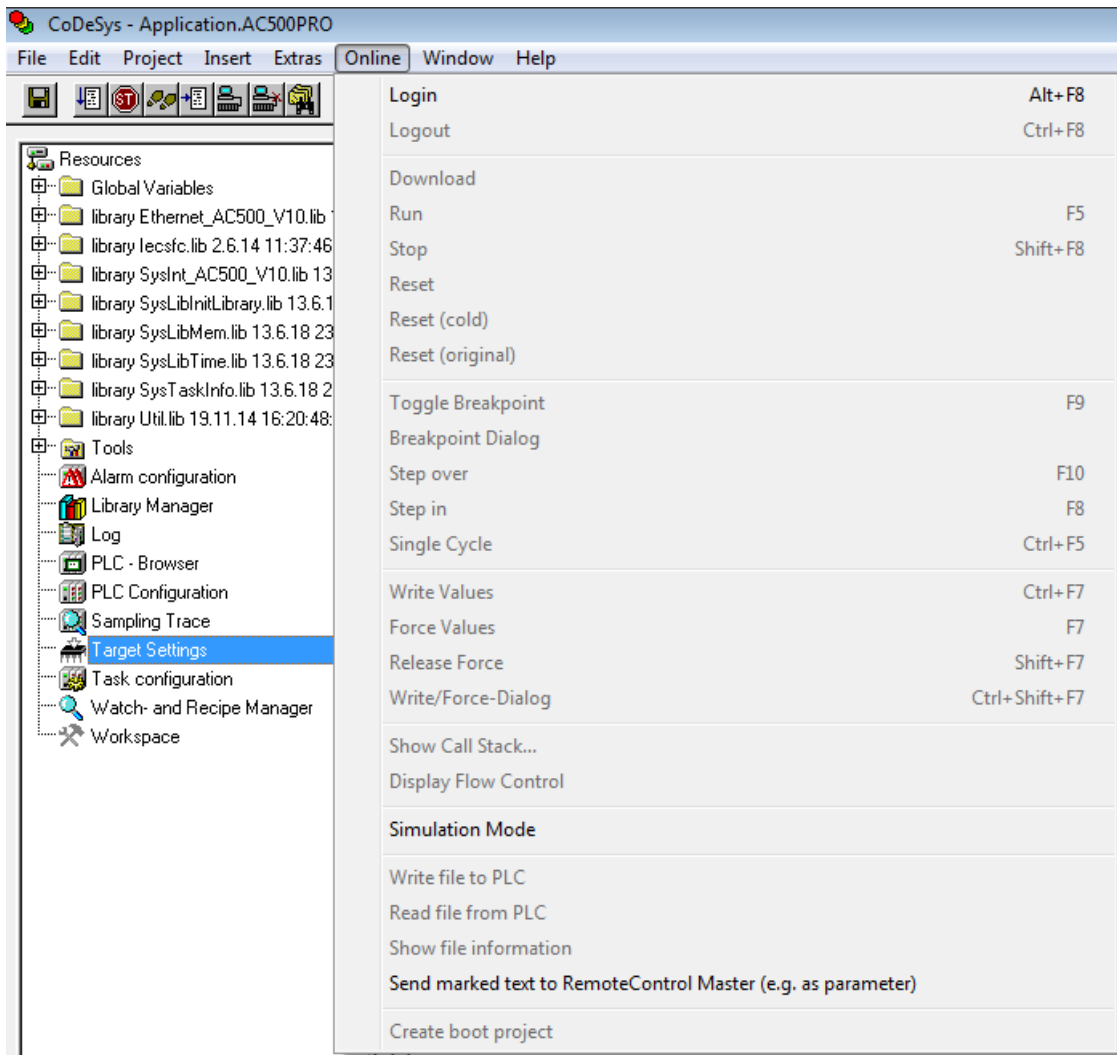
NOTICE!

The port number must be the same as the port number in the Device manager – Port – TK503/TK504 programming cable (COMx). Otherwise the communication cannot be built up.



The number of COM ports depends on the availability on your computer. The baud rate can be selected between 19200 and 115200 bps.

6. In CODESYS, create the communication between Automation Builder and the PLC.



5 Uninstallation / Update

1. In the Windows Control Panel open the Device Manger.
2. Right-click on the entry **TK503/TK504 programming cable** and select **Uninstall** or **Update Driver**.

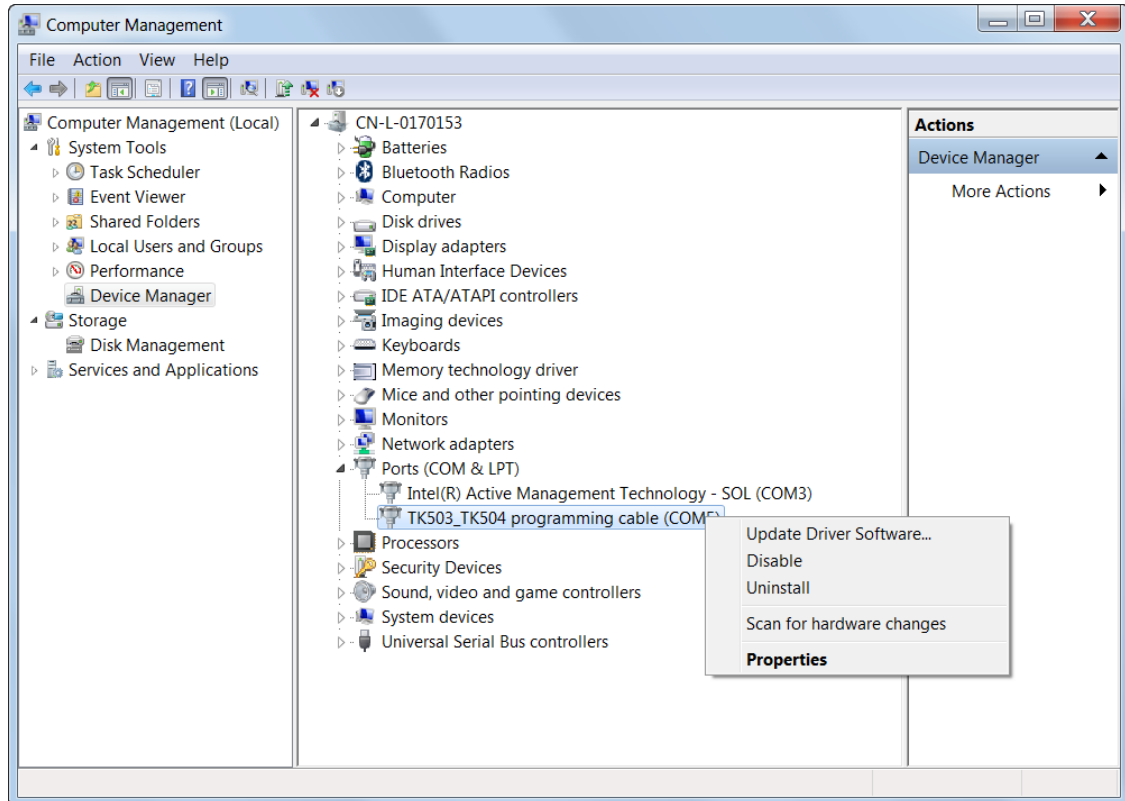


ABB AG
Eppelheimer Straße 82
69123 Heidelberg, Germany
Phone: +49 62 21 701 1444
Fax : +49 62 21 701 1382
E-Mail: plc.support@de.abb.com
www.abb.com/plc

We reserve the right to make technical changes or modify the contents of this document without prior notice. With regard to purchase orders, the agreed particulars shall prevail. ABB AG does not accept any responsibility whatsoever for potential errors or possible lack of information in this document.

We reserve all rights in this document and in the subject matter and illustrations contained therein. Any reproduction, disclosure to third parties or utilization of its contents – in whole or in parts – is forbidden without prior written consent of ABB AG.
Copyright© 2017 - 2021 ABB. All rights reserved