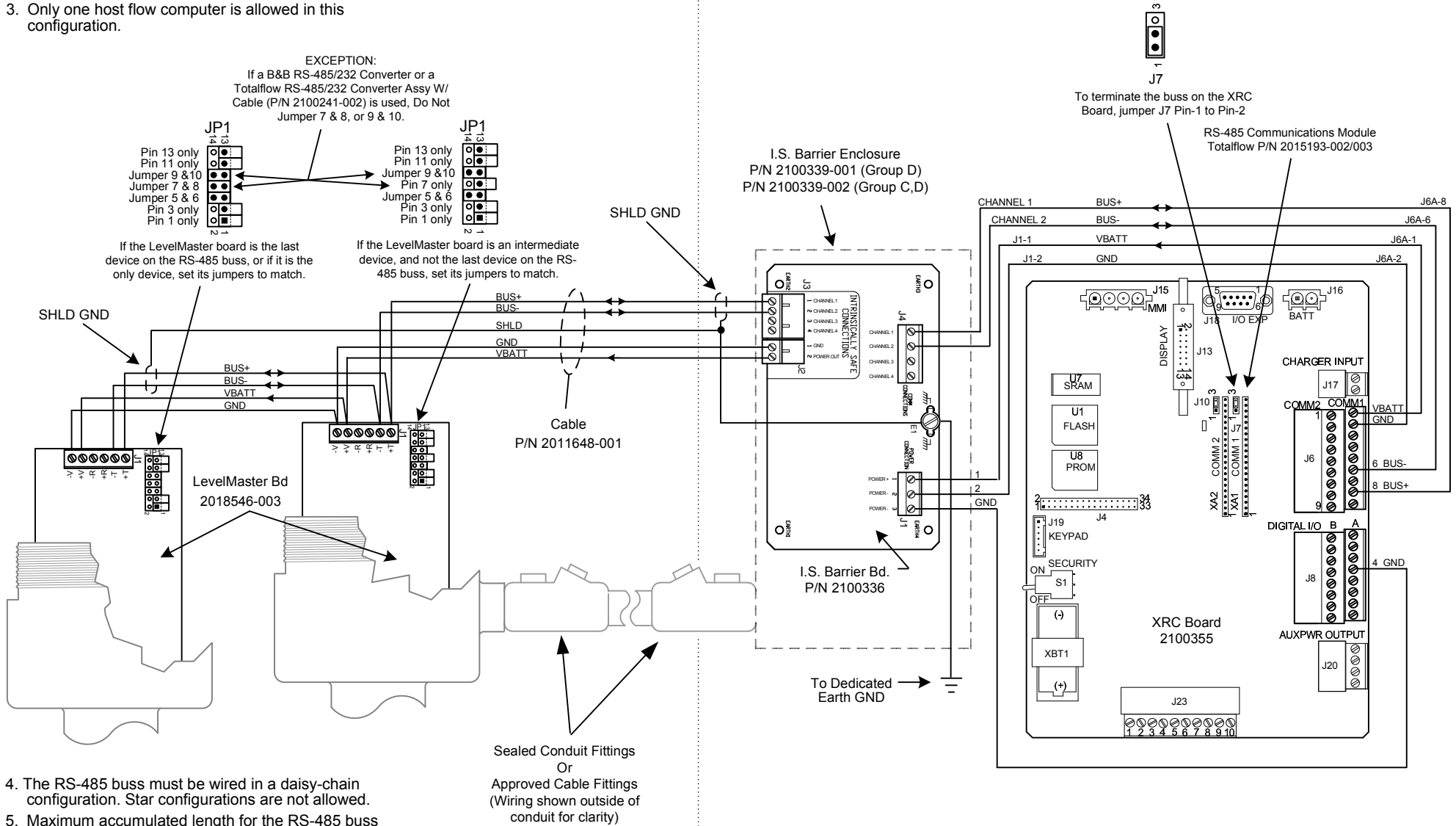


NOTES:

- Prior to any installation in a classified hazardous location, verify installation methods by the Control Drawing referenced on the product's name tag.
- To access the LevelMaster board, remove the enclosure top cover.
- Only one host flow computer is allowed in this configuration.

Hazardous Area

Non-Hazardous Area



- The RS-485 buss must be wired in a daisy-chain configuration. Star configurations are not allowed.
- Maximum accumulated length for the RS-485 buss is 4000 feet, or a maximum of 10 LevelMaster units on the buss are allowed (without barriers), but not both. If barriers are used, the same holds true for 4 LevelMaster units.
- The LevelMaster application must be instantiated in the XRC board by X-series setup software, such as PCCU32.

REF: 2100448-WI

<b>ABB</b>	TOTALFLOW Products	ACTION	DOC TYPE	TITLE	DWG NO.	REV	SHEET
		L19024	UD	LEVELMASTER (2018546 BD) W/BARRIER TO XRC (2100355 BD) COMM 1 (RS-485)	2102855	AA	1 OF 1