

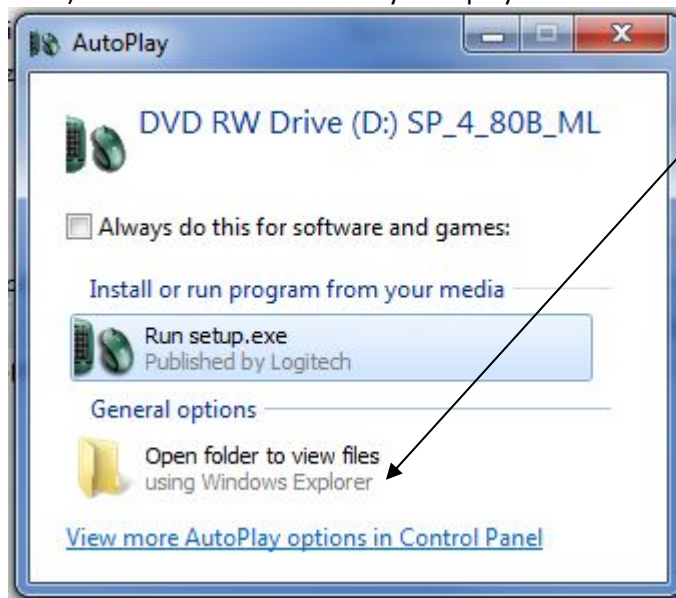
DRIVEWARE SOFTWARE - HOW TO INSTALL A PROGRAM IN XP COMPATIBILITY MODE WITHIN MICROSOFT WINDOWS 7

Description:

This will provide instructions on how to install a program in XP compatibility mode within Windows 7.

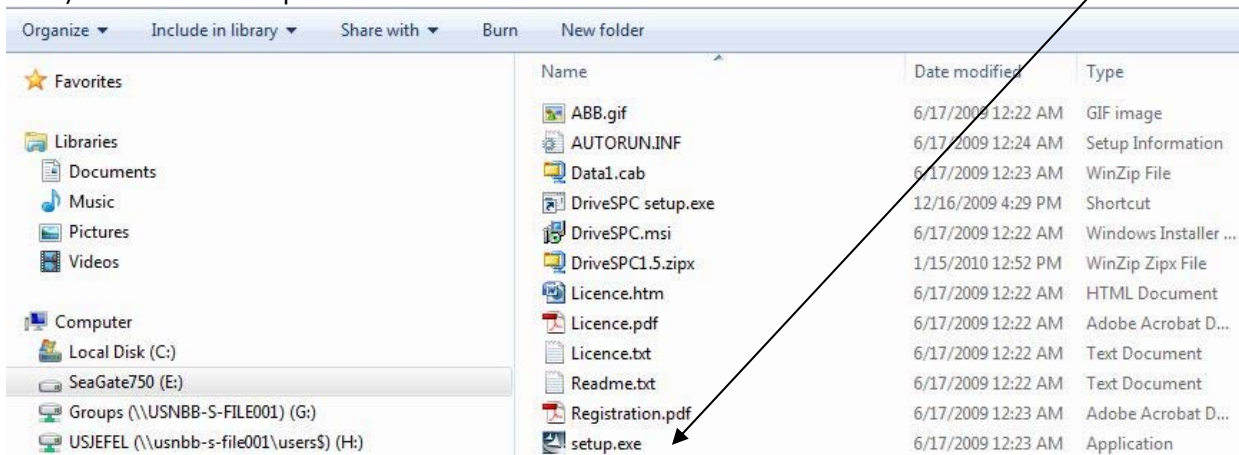
Answer:

- 1) Insert CD or location program to install on the computer.
- 2) If the Windows Auto Play is displayed within Windows 7 click on Open folder to view files.

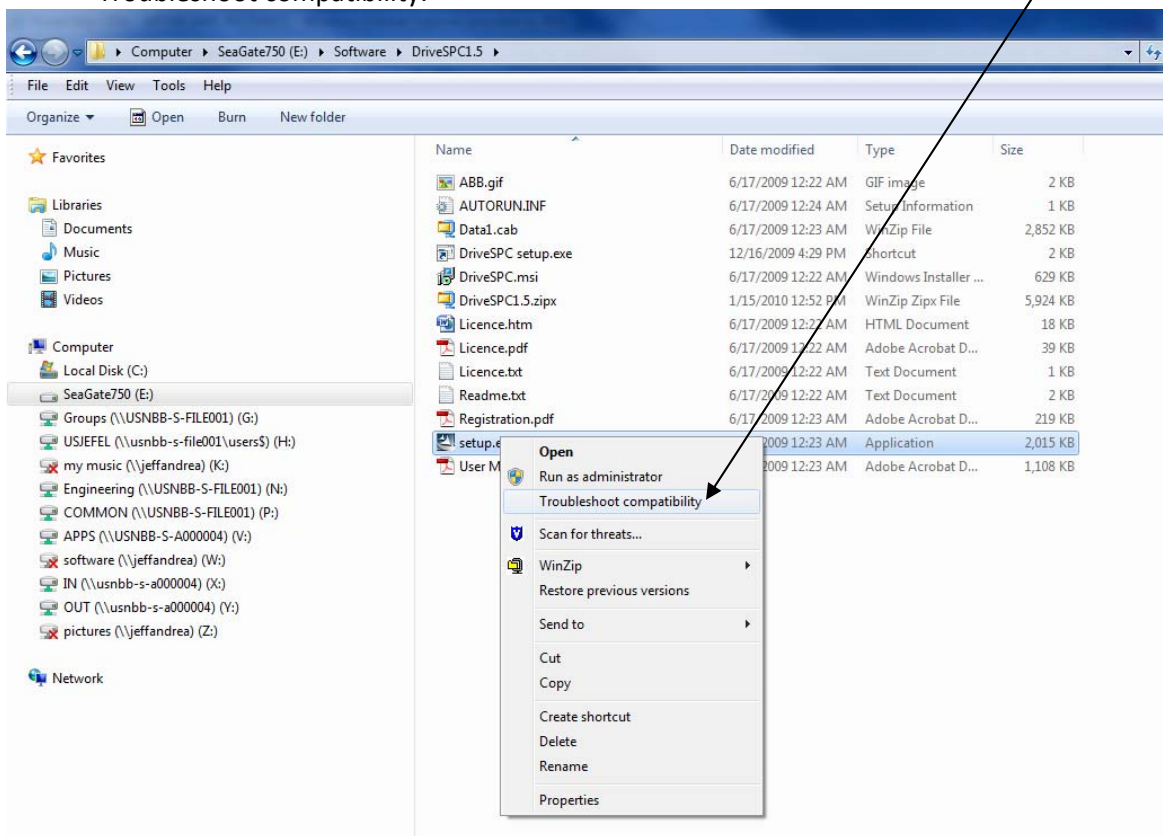


Author: Jeff Fell – Application Engineering		Date: June 2, 2011
Internal (ABBNow)		Document #: LVD-EOTN25U-EN
Industrial & HVAC		Revision: A
Product Categories: ACS55, ACS150, ACS350, ACS355, ACS310, ACS320, ACS550, ACH550, ACS800, ACS850, ACSM1, DCS800		

3) Locate the Setup.exe file or the Install file on the CD or within the folder.

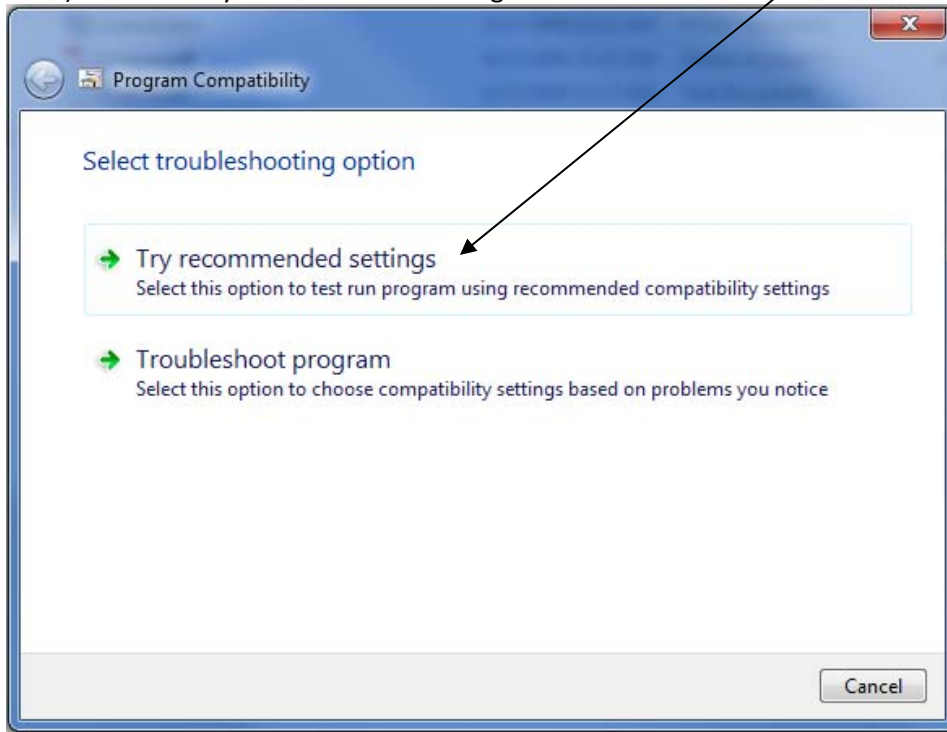


4) Right click on the Setup.exe file or the Install file on the CD or within the folder and select Troubleshoot compatibility.

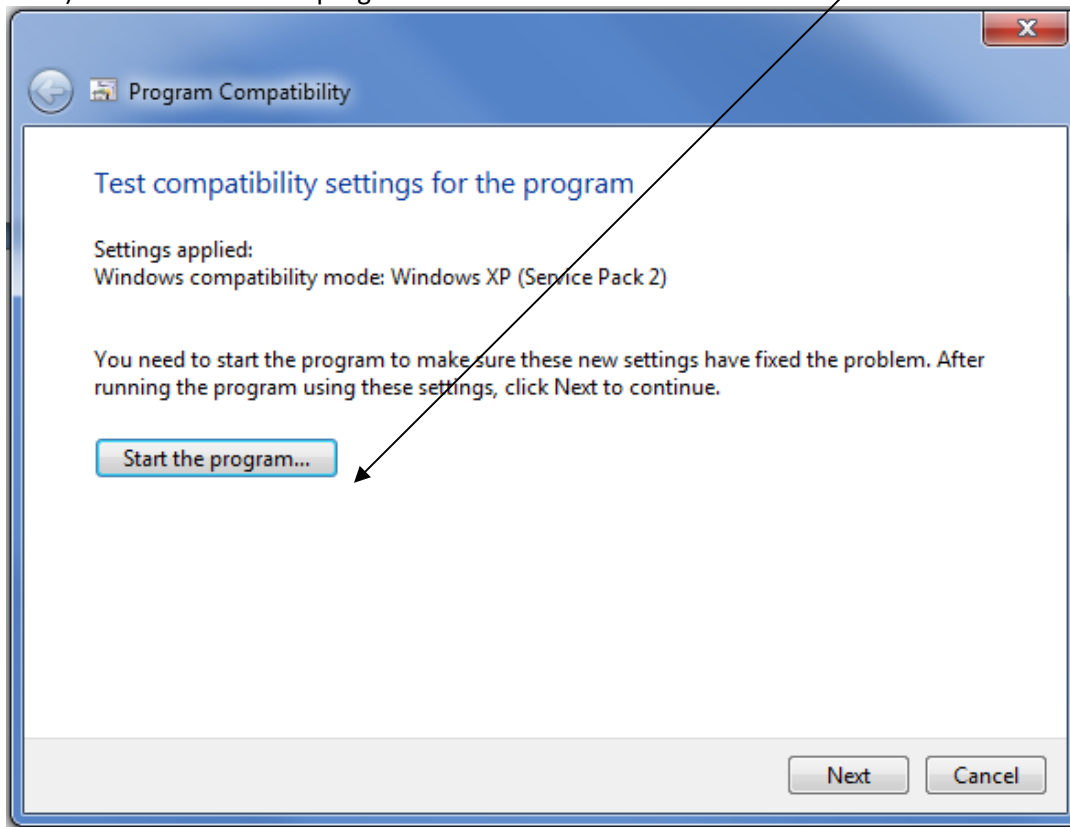


Author: Jeff Fell – Application Engineering		Date: June 2, 2011
Internal (ABBNow)	Industrial & HVAC	Document #: LVD-EOTN25U-EN
		Revision: A
Product Categories: ACS55, ACS150, ACS350, ACS355, ACS310, ACS320, ACS550, ACH550, ACS800, ACS850, ACSM1, DCS800		

5) Click on Try recommended settings from the list.

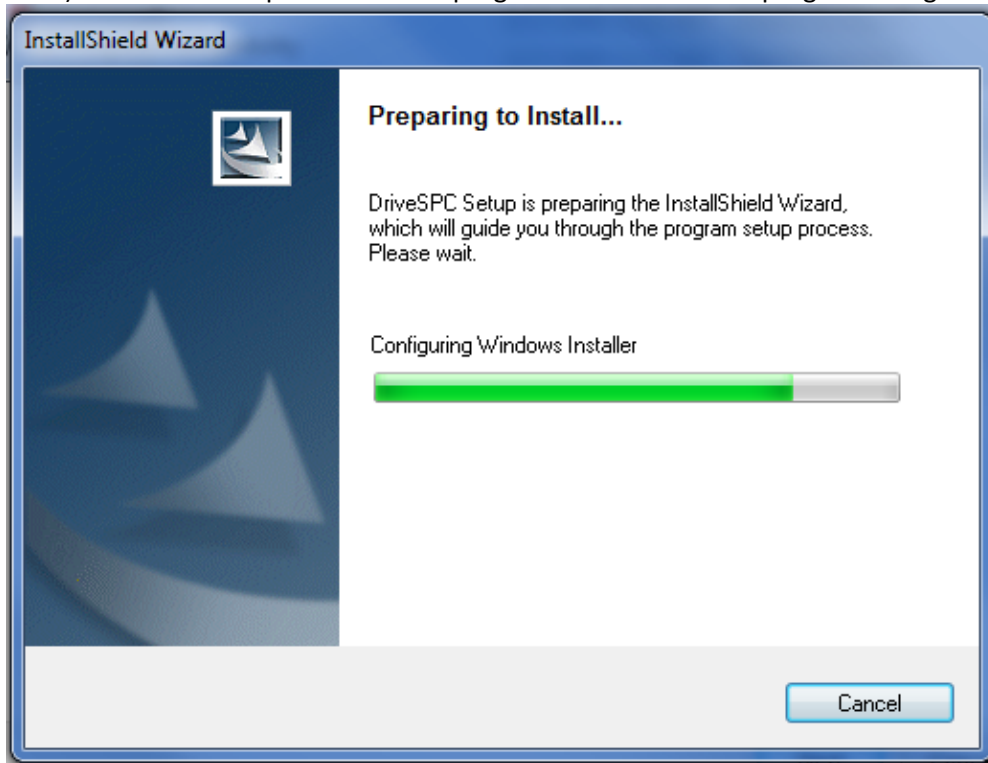


6) Click the Start the program... button within the screen.

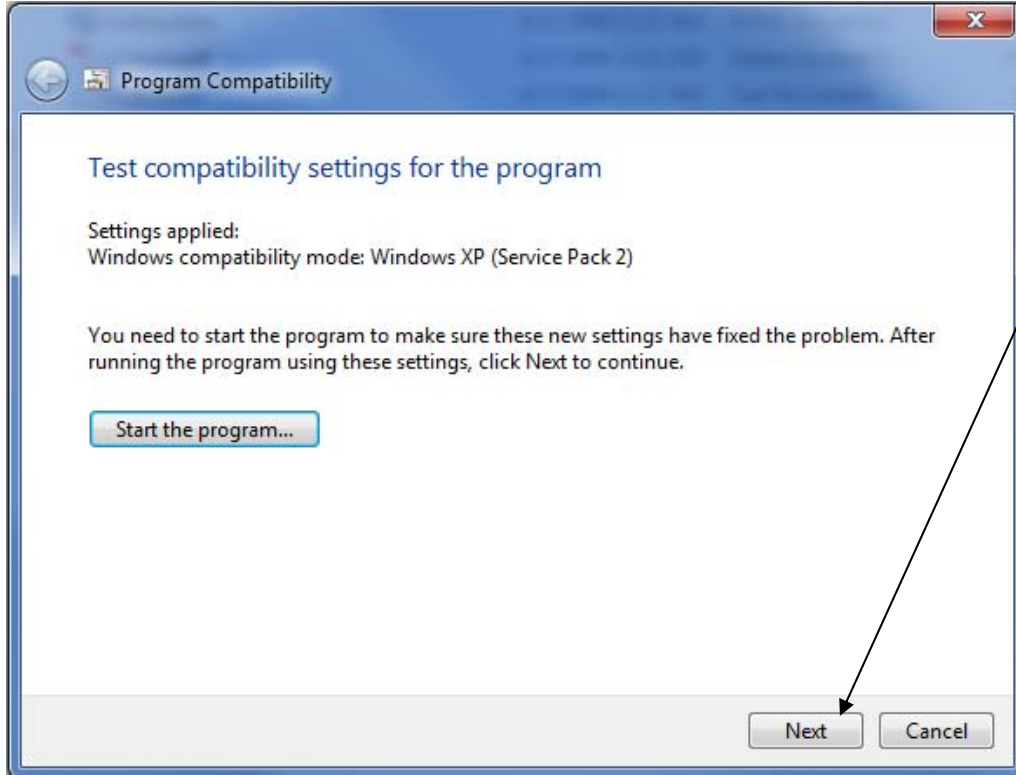


Author: Jeff Fell – Application Engineering		Date: June 2, 2011
Internal (ABBNow)	Industrial & HVAC	Document #: LVD-EOTN25U-EN
		Revision: A
Product Categories: ACS55, ACS150, ACS350, ACS355, ACS310, ACS320, ACS550, ACH550, ACS800, ACS850, ACSM1, DCS800		

7) Follow the steps in the Install program for the software program being installed.

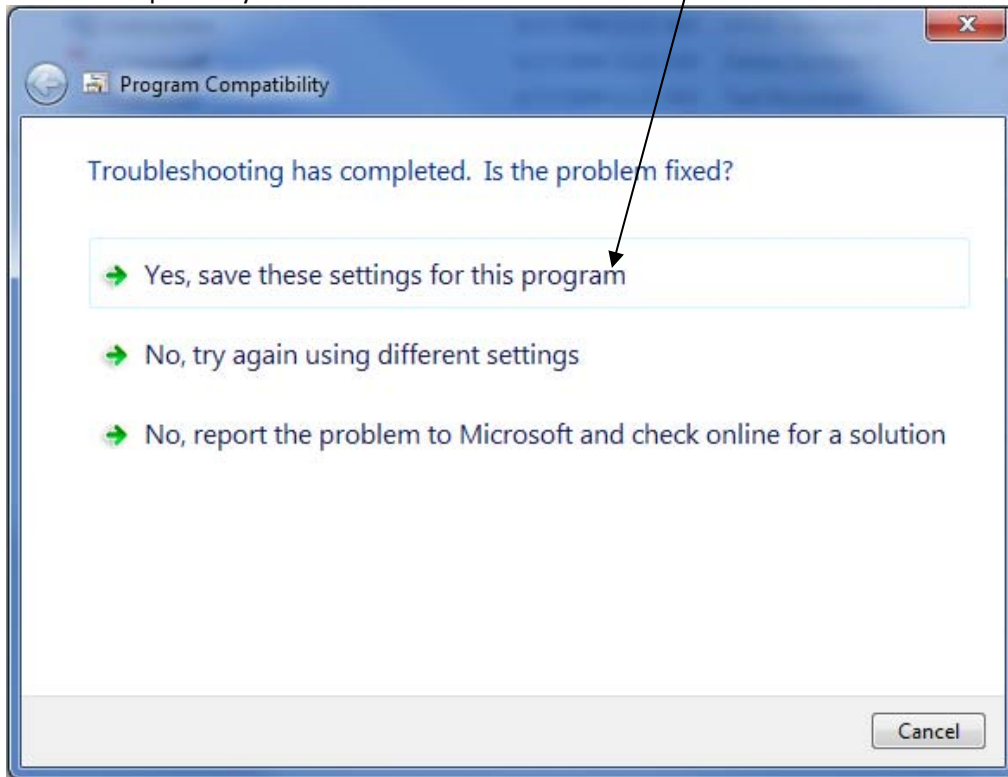


8) When program is finished being installed on the computer, click the Next button.

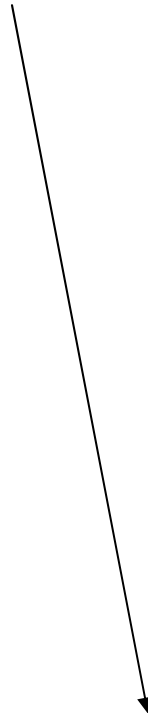


Author: Jeff Fell – Application Engineering		Date: June 2, 2011
Internal (ABBNow)	Industrial & HVAC	Document #: LVD-EOTN25U-EN
		Revision: A
Product Categories: ACS55, ACS150, ACS350, ACS355, ACS310, ACS320, ACS550, ACH550, ACS800, ACS850, ACSM1, DCS800		

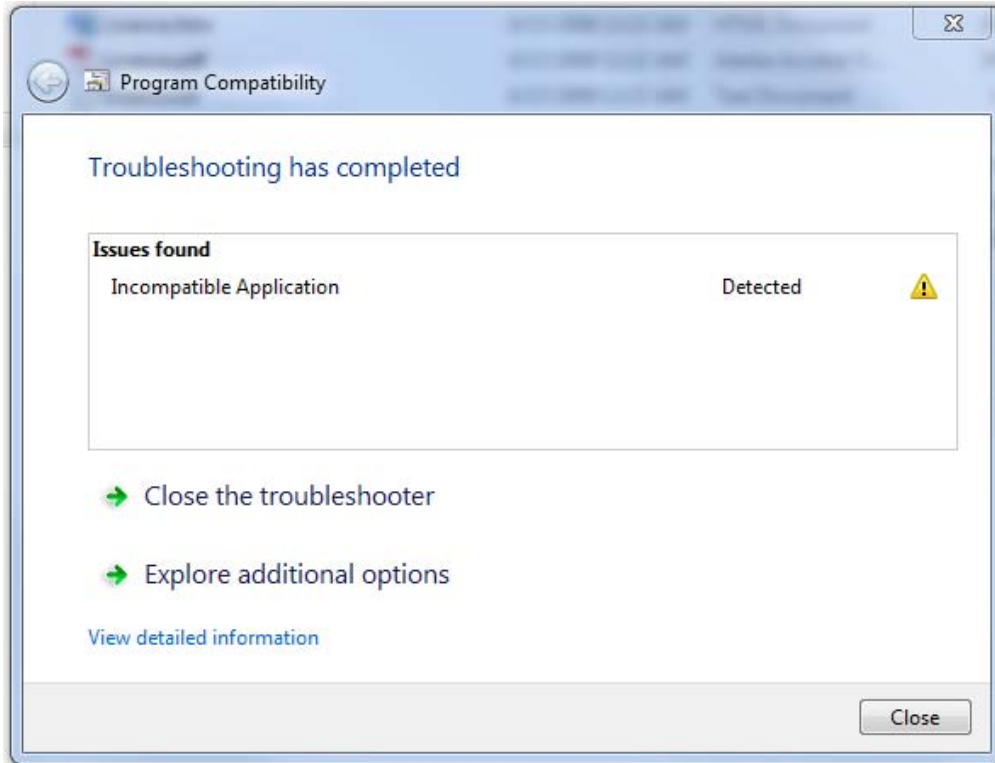
9) Click on Yes, save these setting for this program. This will setup so the program will run in XP compatibility mode.



10) The following screen will display and click on close.



Author: Jeff Fell – Application Engineering		Date: June 2, 2011
Internal (ABBNow)	Industrial & HVAC	Document #: LVD-EOTN25U-EN
		Revision: A
Product Categories: ACS55, ACS150, ACS350, ACS355, ACS310, ACS320, ACS550, ACH550, ACS800, ACS850, ACSM1, DCS800		



Documents or other reference material:

None

Corrective Actions:

None

Author: Jeff Fell – Application Engineering		Date: June 2, 2011
Internal (ABBNow)	Industrial & HVAC	Document #: LVD-EOTN25U-EN
		Revision: A
Product Categories: ACS55, ACS150, ACS350, ACS355, ACS310, ACS320, ACS550, ACH550, ACS800, ACS850, ACSM1, DCS800		