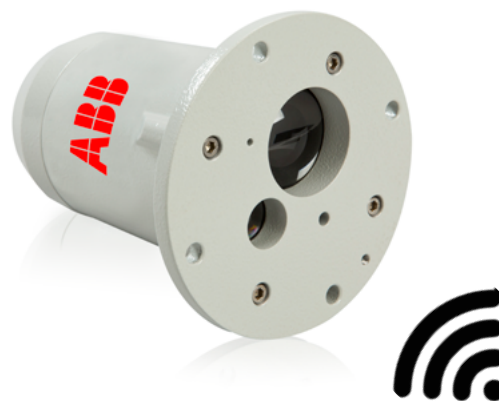


Laser level measurement products

Wireless connection for service & commissioning

Simplify your LM80/LM200 commissioning experience with a wireless adapter.

Measurement made easy



Introduction

When commissioning or servicing an LM80 or LM200 laser level transmitter, there are situations when a wireless connection would be easier, safer and more convenient. Whether you need to climb on top of a silo or work in a very dusty environment, using a laptop computer might just not be possible or convenient. In such situations, it is possible to connect the laser level transmitter to a wireless transmitter and simplify your laser level transmitter commissioning. Serially interfaced through a Bluetooth® ¹ wireless technology adaptor, the laser level transmitter is easily monitored and controlled from a smartphone or tablet.

Wireless solution for LM80 and LM200

There are many Bluetooth devices on the market. We have tested the Airconsole from the company Get Console (www.get-console.com). Download the app, plug-in the adaptor, and start communicating with the laser level transmitter right away.

Setup wireless access

The Airconsole is a small wireless server that enables a WiFi or Bluetooth connection. This device has a serial adaptor to interface with the laser level transmitter. Once connected to the console with a smartphone, communication is done via HyperTerminal like with a computer.

Benefits for commissioning and service

With this solution, it is no longer necessary to carry along cables and a laptop computer. This is especially convenient for commissioning and servicing in hard-to-access locations. Just carry the Airconsole in your pocket.

¹ The Bluetooth® word mark and logos are registered trademarks owned by Bluetooth SIG, Inc., and any use of such marks is under license. Other trademarks and trade names are those of their respective owners."

How to setup your LM80 / LM200 wireless access

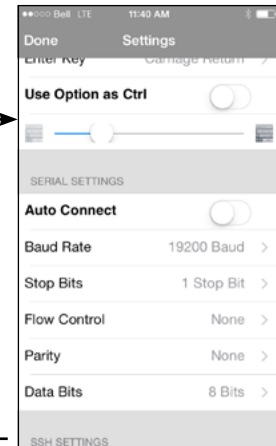
1. Download the App for the specific device that you want to communicate with.



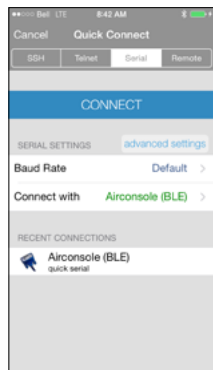
2. Turn on



3. Set the serial settings.



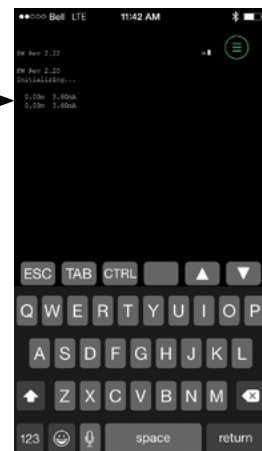
4. Connect your device to the console.



5. Plug the Airconsole to the laser level transmitter and power on the laser level transmitter.



6. You may now monitor and control your LM80.



For more information, please contact:

ABB Inc.
Process Automation
Level Measurement Products
 3400, Rue Pierre-Ardouin
 Québec (Québec) G1P 0B2
 Canada
 Tel.: +1 418 877-2944
 1 800 858-3847 (North America)
 Fax: +1 418 877-2834
 E-Mail: Lasers@ca.abb.com

www.abb.com/level

2. Android © 2016 Google Inc. All rights reserved. Google and the Google Logo are registered trademarks of Google Inc.

Apple © 2016 is a trademark of Apple Inc., registered in the U.S. and other countries

Note

We reserve the right to make technical changes or modify the contents of this document without prior notice. With regard to purchase orders, the agreed particulars shall prevail. ABB does not accept any responsibility whatsoever for potential errors or possible lack of information in this document.

We reserve all rights in this document and in the subject matter and illustrations contained therein. Any reproduction, disclosure to third parties or utilization of its contents - in whole or in parts - is forbidden without prior written consent of ABB.

Copyright© 2016 ABB
 All rights reserved

3KX12001R3001