

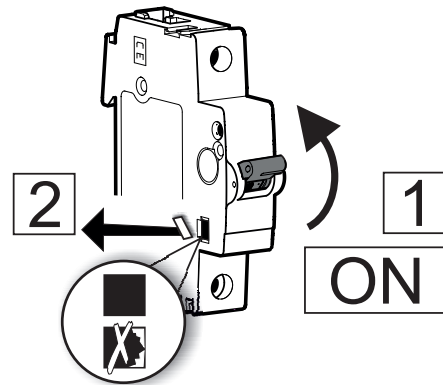
S2C-H02L
Hilfskontakt
Auxiliary contact

2CDS200936R0003

FR: 359626
 IT: A648844
 FI: 3210850
 NO: 1630490
 SE: E2102507
 US: S2C-H02L



MCB: S200 S200 MT/S200 MTR S200 P S200 MUC S300P	
10.6 lb-in 0.8 Nm 2 x 1.5 mm ² 0.31 in. 8 mm	
AC 14	1 A/400 V 2 A/230 V
DC 12	1 A/220 V 1.5 A/110 V
DC 13	2 A/60 V 4 A/24 V



2CDC022006F0013

DE: Hilfskontakt 2 Öffner
 EN: Auxiliary contact 2NC
 FR: Contact auxiliaire 2NF
 IT: Contatto ausiliario 2NC
 ES: Contacto auxiliar 2NC
 CN: 辅助触头 GB/T 14048.5
 RU: ДОПОЛНИТЕЛЬНЫЙ КОНТАКТ



DE: Warnung! Installation nur durch elektro-technische Fachkraft.
 EN: Warning! Installation by person with electrotechnical expertise only.
 FR: Avertissement! Installation uniquement par des personnes qualifiées en électricité technique.
 IT: Avvertenza! Fare installare solo da un elettricista qualificato.
 ES: ¡Advertencia! La instalación deberá ser realizada únicamente por electricistas especializados.

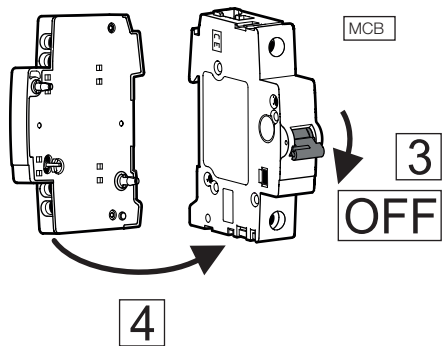
ABB STOTZ-KONTAKT GmbH

Eppelheimer Str. 82
 69123 Heidelberg
 Germany

www.abb.com/lowvoltage/directives

GHS2007017P0027

max. 1x
 S2C-H02L



2CDC022007F0013