

ELECTRIFICATION U.S.

Product Life Cycle Announcement

Enclosed Rotary Disconnect Switches UL508: EOT, NF



In accordance with the ABB global strategy, the Enclosed Rotary Disconnect Switches UL508 (EOT, NF) product line will enter the Limited phase of their life cycle on March 29, 2024.

This life cycle management is being done to provide our customers with the latest technology available in these product categories.

With the obsolescence of the current offering of Enclosed Rotary Disconnect Switches UL508, now is the time to move to new technology. The new UL508 Enclosed Rotary Switch (ERS) range helps make your business more competitive by offering an opportunity to serve a wider variety of applications in one streamlined range. It's a simpler way to improve protection for equipment and personnel, increase uptime, and reduce maintenance.

This new version of the UL508 Enclosed Rotary Switch (ERS) will be available for order in empower beginning March 1, 2024.

For more information, including cross reference support, on the new UL508 Enclosed Rotary Switch (ERS) offering, see product resources linked below on page 3 of this announcement.

| Legacy Product Line (to be replaced) | Replacement Product Line |
|---------------------------------------------------------------------------------------------------------------------------------------------------------------------------|-----------------------------------------------------------------------------------------------------------------------------------------------------------------------|
|  <p data-bbox="563 1480 770 1576">UL508 Enclosed Rotary Switch EOT, NF,</p> |  <p data-bbox="1313 1473 1477 1603">UL508 Enclosed Rotary Switch (ERS)</p> |

| LCM Phase | Active | Classic | Last time buy | Limited | Obsolete |
|----------------|----------------------------------------------|-----------------|----------------|----------------|----------------------------------------------|
| Effective Date | UL508 Enclosed Rotary Switch EOT, NF, FC, FJ | January 1, 2023 | March 29, 2024 | March 30, 2024 | March 31, 2024 or When inventory is depleted |

| LCM Phase | Active | Classic | Last time buy | Limited | Obsolete |
|---------------------------------------------------------------------------------|--------------------------------------------------------------|----------------------------------------|------------------------------------------------------------------------------|----------------------------------------------------------------------|--------------------------------------------------------------|
| Status description | Product is fully available for sale, quotation and promotion | Product will be replaced or phased out | Last opportunity to enter purchase orders for above on-hand inventory levels | Order for available inventory only on a first come first serve basis | Product is no longer available, purchase orders not accepted |
| Product available to order | Yes | Yes | Yes | Not guaranteed | No |
| New special pricing agreements (SPAs) and project quotations can be established | Yes | No | No | No | No |
| Delivery Lead-times | Standard | May be longer than standard | May be longer than standard | Maybe longer than standard | N/A |
| Product available for new or already quoted projects | Yes | Yes | Yes | Not guaranteed | |
| Product available for expansion projects | Yes | Yes | Yes | Not guaranteed | Not guaranteed, service only |
| Returns accepted per ABB policy | Yes | Yes | Yes | No | No |
| Spares available | Yes | Yes | Yes | Not guaranteed* | Not guaranteed, service only |
| Available in online tools | Yes | Yes | Yes | Not guaranteed | No |

ABB North America Electrification Services

Available 24/7/365

Phone: 1-888-434-7378 (option 3)

Email: epis.service@abb.com

Website: <https://electrification.us.abb.com/services>

Product resources

Replacement product information:

[BuyLog - Disconnect Switches and Operating Mechanisms](#)

[New Enclosed Rotary Switch – UL508 Technical Catalog](#)

[ERS Cross Reference](#)

Other support information:

[Rotary Switch empower Configurator](#)

[Electrification.us.abb.com](#)

[ABB product news](#)

For additional information, please contact your ABB account manager

Dimensional Drawings ERS UL508:

*Note: Product weight and dimensions will not change between current enclosed rotary switch offering and new enclosed rotary switch (ERS) offering.

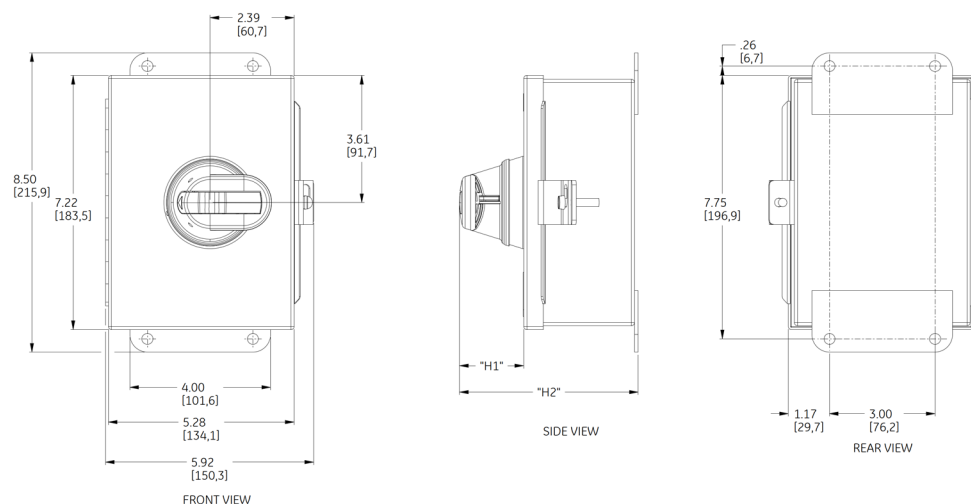
Enclosed Rotary Switches EOT520, EOT530, EOT540

3-pole UL 508, non-fused

Dimensions

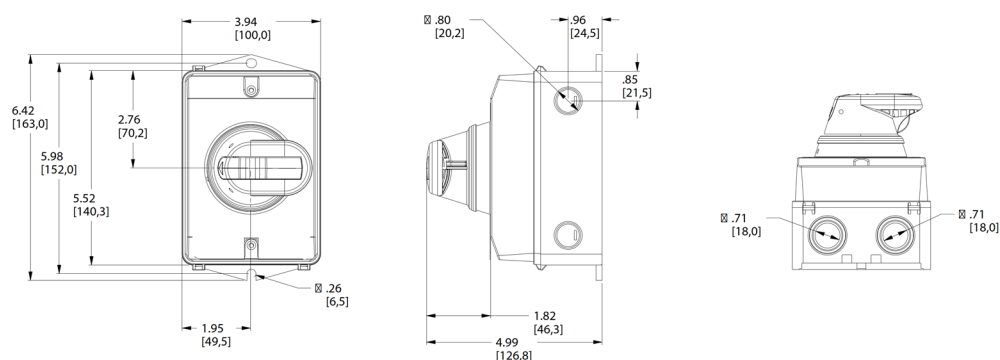
NEMA 3R/12 metal enclosure

NEMA 4/4X stainless steel enclosure



EOT520, EOT530, EOT540

NEMA 4/4X plastic enclosure



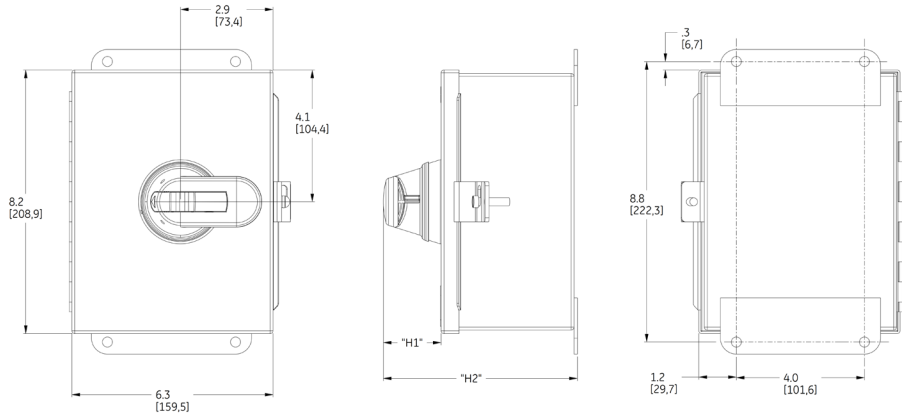
EOT520, EOT530, EOT540

Enclosed Rotary Switches EOT560, EOT580

3-pole UL 508, non-fused

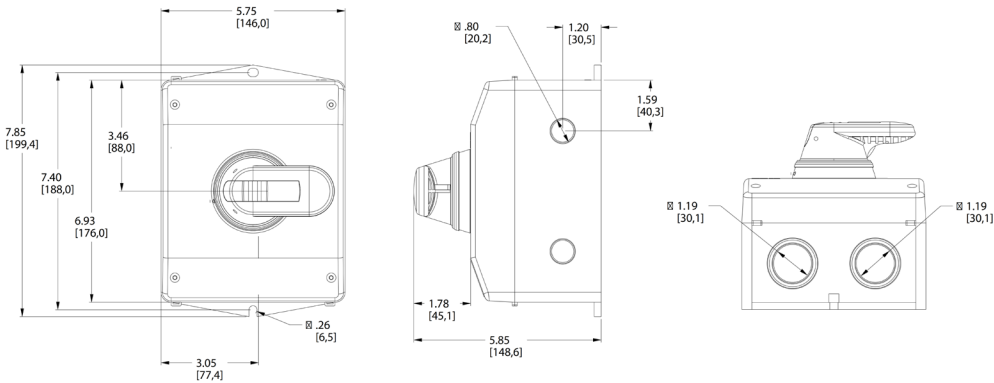
Dimensions

NEMA 3R/12 metal enclosure
NEMA 4/4X stainless steel enclosure

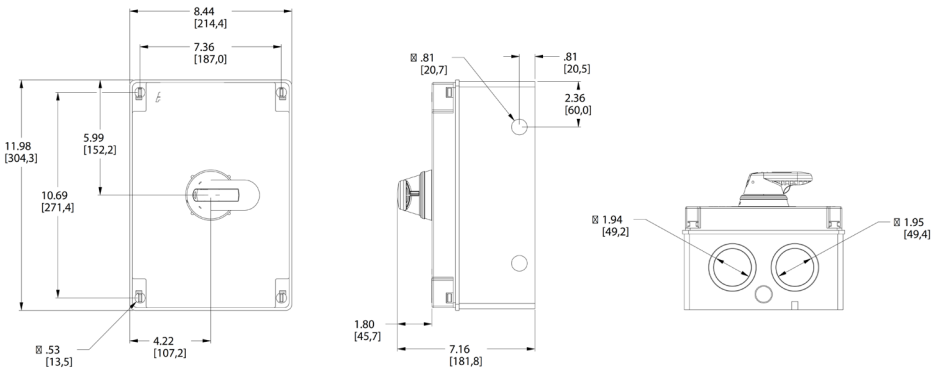


EOT560, EOT580

NEMA 4/4X plastic enclosure



EOT560



EOT580

Enclosed Rotary Switches EOT520, EOT530, EOT540, EOT560, EOT580

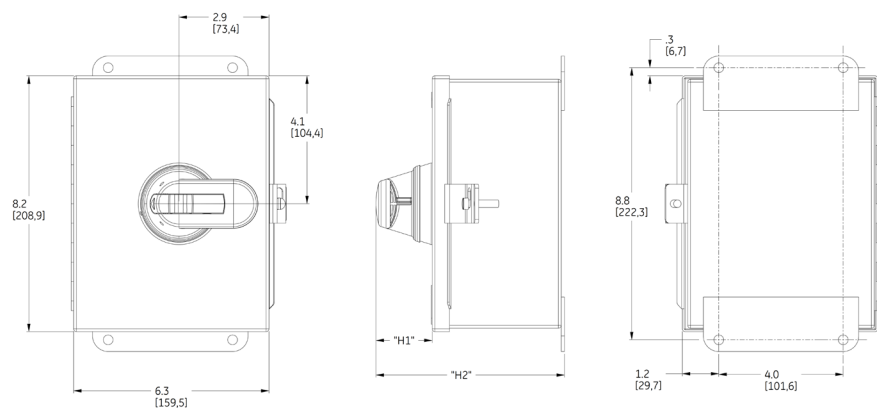
6-pole UL 508, non-fused

3-pole UL 508, changeover

Dimensions

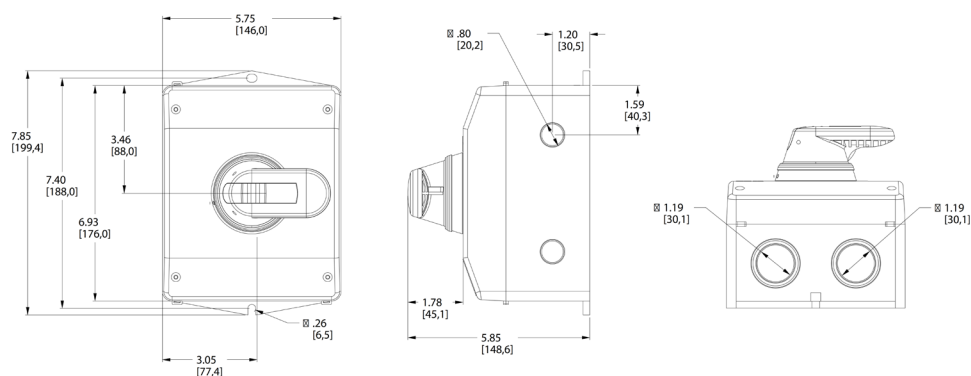
NEMA 3R/12 metal enclosure

NEMA 4/4X stainless steel enclosure

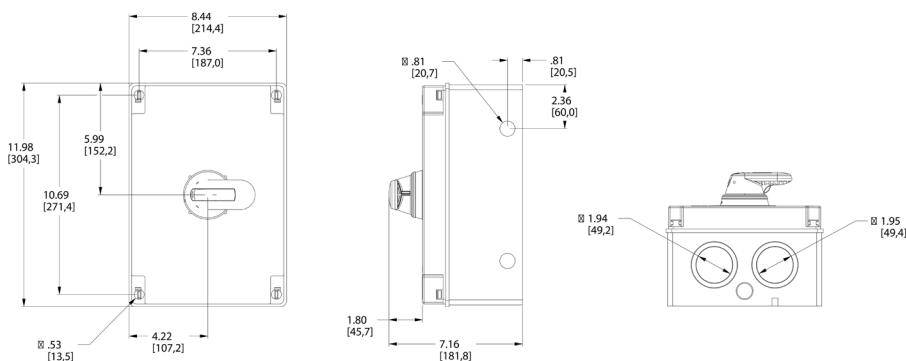


EOT520, EOT530, EOT540, EOT560, EOT580

NEMA 4/4X plastic enclosure



EOT520, EOT530, EOT540, EOT560



EOT580