

# Release Notes coupler Firmware PROFINET IO

## For CM589-PNIO (-XC) and CM589-PNIO-4 (-XC) PROFINET IO Devices

ABB Automation Products GmbH  
Wallstadter Str. 59  
68526 Ladenburg, Germany  
Telephone: +49 62 21 701 1444  
Fax: +49 62 21 701 1382  
Email: [plc.sales@de.abb.com](mailto:plc.sales@de.abb.com)  
Internet: [www.abb.com/plc](http://www.abb.com/plc)

Firmware 1.6.2.20 for PROFINET IO Device couplers

### General purpose

The firmware version is capable to run on the following hardware variants:

- CM589-PNIO **1SAP172900R0011**
- CM589-PNIO-XC **1SAP372900R0011**
- CM589-PNIO-4 **1SAP172900R0111**
- CM589-PNIO-4-XC **1SAP372900R0111**

### Changes in this version

- Update to Hilscher GmbH protocol stack revision 3.11.0.0
- PROFINET certification

### Known issues

- N.A.

### Installation (Download) prerequisite

To download this firmware to a CM589-PNIO (-XC) an AC500 CPU with firmware V2.4.0 or higher is needed.

To download this firmware to a CM589-PNIO-4 (-XC) an AC500 CPU with firmware V2.6.0 or higher is needed.

The installation / download of this firmware should be performed via an SD-Card.

- Attached SD Card image:
  - SD Card image to update up to 4 external coupler CM589-PNIO (-XC) or CM589-PNIO-4 (-XC) to firmware version V1.6.2.20
    - [SD-Card\\_create\\_CM589-PNIO\\_V1\\_6\\_2\\_20.exe](#)

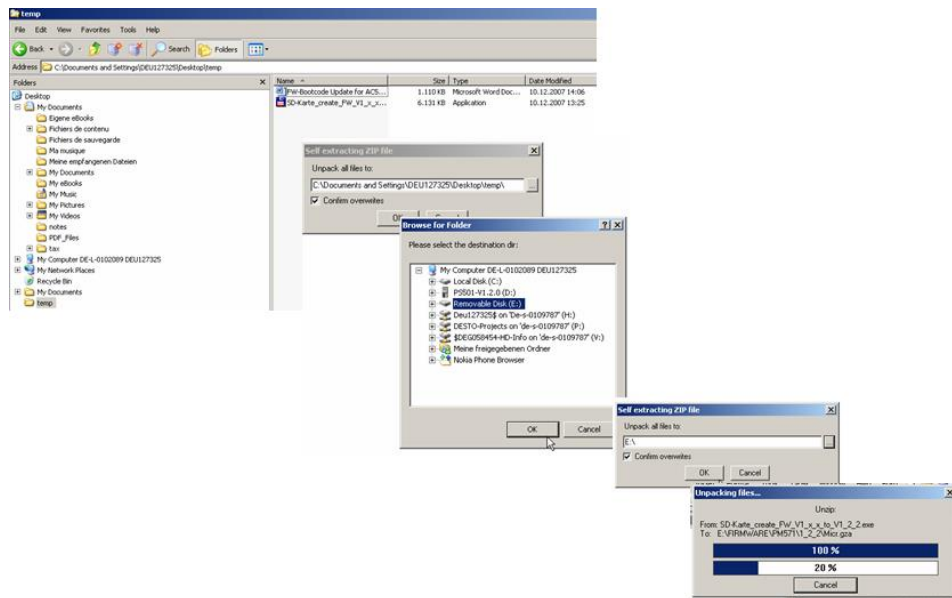
### Update using SD-Card:

If the update has to be done using a SD-Card, the SD card image files are creating the needed update directory on a formatted SD-Card.

- Put the SD-Card into the SD-Card reader from your PC.
- After that, select the SD-Card image data corresponding of the product to be updated (e.g. CM589-PNIO / CM589-PNIO-4)

“SD-Card\_create\_CM589-PNIO\_V1\_6\_2\_20.exe”

- With double click. The file is automatically extracted; select the SD-Card as target.



- Select the SD-Card reader/writer root directory to extract the file.
  - And click on OK Button, the program will generate the file structure on the SD-card and copy all the needed files in the corresponding directories
- Perform then the update as described into the AC500 User manual.

### **Update using Automation Builder software:**

If the update or change of protocol feature from Automation Builder shall be used this is possible by replacing the current delivered firmware version with this version V1.6.2.20. Therefor the following steps are necessary:

- Close all Automation Builder instances
- Navigate to folder where the firmware files for the Automation Builder are installed:
  - For AB 2.0.x or profile 2.0:  
“C:\ProgramData\AutomationBuilder\AC500\_Firmware\_2.0\Coupler”
  - For AB 1.2.x or profile 1.2:  
“C:\ProgramData\AutomationBuilder\AC500\_Firmware\_1.2\Coupler”
  - For AB 1.1.x or profile 1.1:  
“C:\ProgramData\AutomationBuilder\AC500\_Firmware\_1.1\Coupler”
- In folder “CM589” create a new folder named “1\_6\_2\_20”
- Copy the firmware file to folder newly created
- In folder “CM589” delete all folders containing other firmware files than 1\_6\_2\_20
- Restart Automation Builder