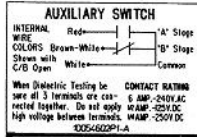


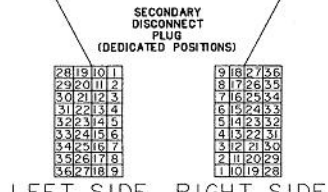
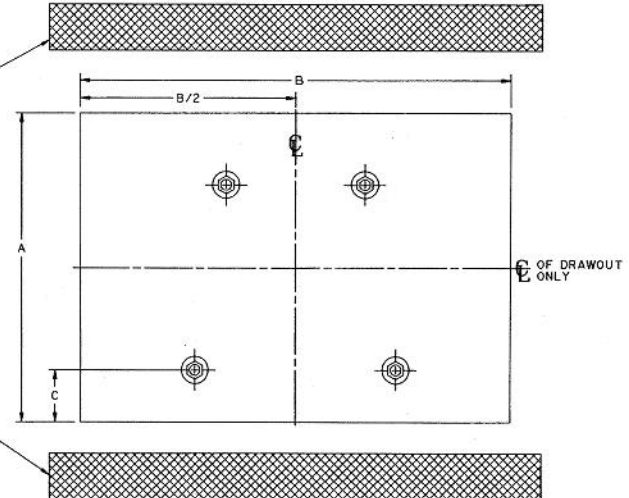
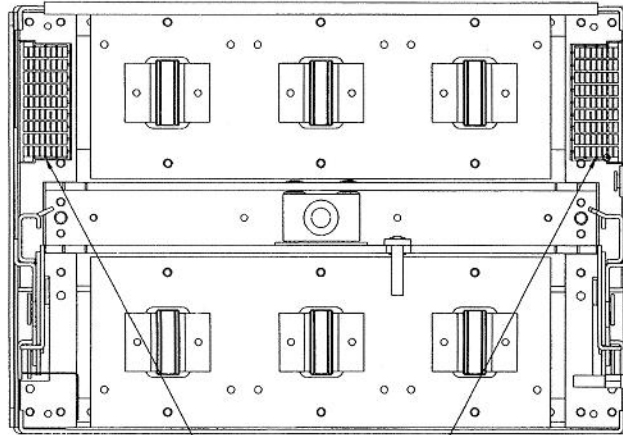
"WRITE ON" SPACES FOR SWITCH CIRCUIT IDENTIFICATION



INTERNAL WIRE HARNESS COLOR CODES:
 R=RED P=PURPLE
 W=WHITE G=GREEN
 Y=YELLOW B=BLACK
 N=BROWN L=BLUE

19 AUX. II "A"	1 AUX. 12 "A"
20 AUX. II "B"	2 AUX. 12 "B"
21 AUX. II COM	3 AUX. 12 COM
22 AUX. 9 "A"	4 AUX. 10 "A"
23 AUX. 9 "B"	5 AUX. 10 "B"
24 AUX. 9 COM	6 AUX. 10 COM
25 AUX. 7 "A"	7 AUX. 8 "A"
26 AUX. 7 "B"	8 AUX. 8 "B"
27 AUX. 7 COM	9 AUX. 8 COM
28 AUX. 5 "A"	10 AUX. 6 "A"
29 AUX. 5 "B"	11 AUX. 6 "B"
30 AUX. 5 COM	12 AUX. 6 COM
31 AUX. 3 "A"	13 AUX. 4 "A"
32 AUX. 3 "B"	14 AUX. 4 "B"
33 AUX. 3 COM	15 AUX. 4 COM
34 AUX. 1 "A"	16 AUX. 2 "A"
35 AUX. 1 "B"	17 AUX. 2 "B"
36 AUX. 1 COM	18 AUX. 2 COM

16 ELECT. OPER.+ R	36 ELECT. OPER.- B
17 RMT. CHG. W	35 RMT. CHG. L
16 RMT. CLS.+ Y	34 RMT. CLS.- N
15 B.A. ONLY COM Y	33 CHG. IND. B
14 B.A. ONLY N.O. N	32 SHUNT TRIP B
13 B.A. ONLY N.C. P	31 SHUNT TRIP B
12 B.A. LOCKOUT COM W	30 U.V.R. L
11 B.A. LOCKOUT N.O. R	29 U.V.R. L
10 B.A. LOCKOUT R.C. B	28 B
9	27
8	26 ZSI INPUT- W
7 COMMNET- G	25 ZSI INPUT+ G
6 COMMNET+ W	24 ZSI OUTPUT- W
5 C Ø VOLTS R	23 ZSI OUTPUT+ R
4 B Ø VOLTS W	22 D/O SWITCH W
3 A Ø VOLTS L	21 D/O SWITCH L
2 24VOLTS DC- B	20 A H TAP B
1 24VOLTS DC+ R	19 B H COM W



LEFT SIDE RIGHT SIDE
 NOTE: ALL WIRES ON LEFT = AUX. SWITCH WIRES.
 ALL WIRES ON RIGHT = ALL OTHER WIRING.
 *S CORRESPOND TO WIRE CHART
 I.E. *31, 32 RIGHT = SHUNT TRIP

FAR* ROW
 NEAR* ROW
LEFT SIDE
 TERMINAL BLOCK LABEL
BLOCK "A"

NEAR* ROW
 FAR* ROW
RIGHT SIDE
 TERMINAL BLOCK LABEL
BLOCK "B"

*SCREW TERMINAL POSITION RELATIVE TO FRONT OF CIRCUIT BREAKER

WIRE CHART

NOTE: WIRE RANGE #18 THRU #12 SOLID OR 3 STRANDED COPPER WIRE. TORQUE: 9LB-IN.

FRAME RATING	BREAKER TYPE	WEIGHT		MINIMUM COMPARTMENT VOLUME	MINIMUM DOOR VENTILATION	STANDARD DOOR CUT-OUT			OPTIONAL DOOR CUT-OUT		
		BREAKER	DRAWOUT SUBSTRUCTURE			A	B	C	A	B	C
800A	STATIONARY MOUNTED	71 LBS* [32.3KG]	N/A	3447 CU.IN. [56486CU.CM]	NONE	10 [254]	14 [356]	1.69 [42.9]	9.83 [249.7]	13.38 [339.9]	1.605 [40.8]
1600A		79 LBS* [35.9KG]				TRIM PLATE REQUIRED	FLUSH FRONT OR NON-HINGED DOOR CONSTRUCTION- TRIM PLATE MAY BE OMITTED				
2000A		2 24VOLTS DC- B				20 A H TAP B	86.4 SQ.IN. [557.4 SQ.CM] TOTAL 43.2 SQ.IN. [278.7 SQ.CM] TOP 43.2 SQ.IN. [278.7 SQ.CM] BOTTOM	TRIM PLATE REQUIRED	FLUSH FRONT OR NON-HINGED DOOR CONSTRUCTION- TRIM PLATE MAY BE OMITTED		
800A	DRAWOUT MOUNTED	106 LBS* [48.2KG]	54 LBS [24.5KG]	3780 CU.IN. [61943CU.CM]	TRIM PLATE REQUIRED	10 [254]	14 [356]	N/A	9.83 [249.7]	13.38 [339.9]	N/A
1600A		125 LBS* [56.8KG]	68 LBS [30.9KG]	5670 CU.IN. [92915CU.CM]	TRIM PLATE REQUIRED	FLUSH FRONT OR NON-HINGED DOOR CONSTRUCTION- TRIM PLATE MAY BE OMITTED					
2000A		2 24VOLTS DC+ R	19 B H COM W	34.2 SQ.IN. [220.6 SQ.CM] TOTAL 29.5 SQ.IN. [190.3 SQ.CM] TOP 4.66 SQ.IN. [30.0 SQ.CM] BOTTOM	TRIM PLATE REQUIRED	FLUSH FRONT OR NON-HINGED DOOR CONSTRUCTION- TRIM PLATE MAY BE OMITTED					

N/A = NOT APPLICABLE
 * ADD 9 LBS [4.1KG] FOR ELECTRICAL OPERATOR

TABLE 1

NOTES:
 3. SEE OUTLINE DRAWING I0054370SH5.
 2. BUSBARS OR CABLES SHOULD BE SIZED PER UL891 DEAD-FRONT SWITCHBOARDS STANDARD.
 1. DIMENSIONS IN BRACKETS ARE [METRIC].

ABB

POWER BREAK II
CIRCUIT BREAKER WEIGHTS & VENTS INFO

THIRD ANGLE	SHEET#	DWG NO.	DATE	REV
	5 of 19	GEM3025	28-Oct-22	C