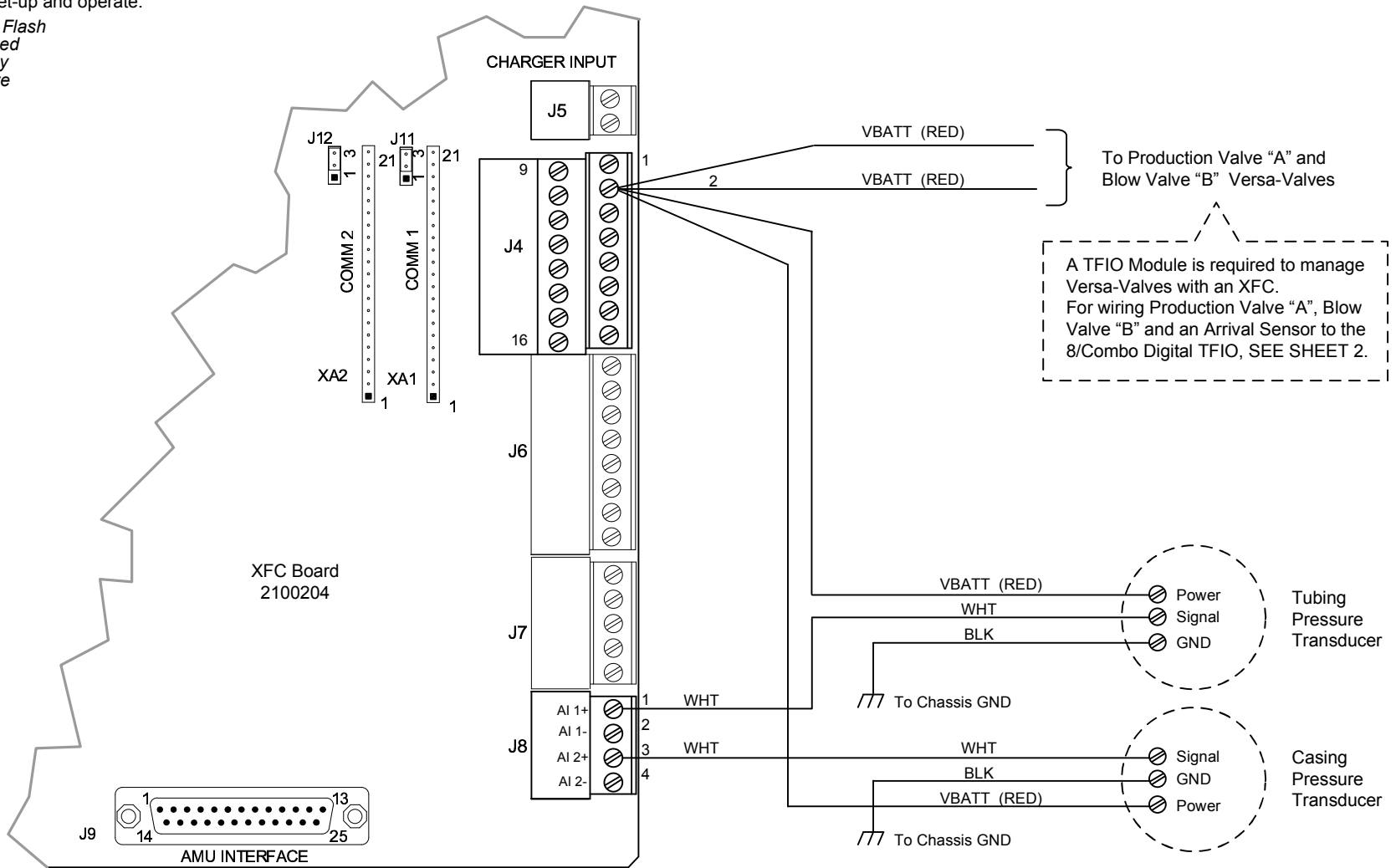


**NOTES:**

1. **WARNING:** This drawing does not illustrate completely the installation methods required for hazardous locations. Prior to any installation in a Classified Hazardous Location, verify installation methods by the Control Drawing referenced on the product's name tag and national and local codes.
2. Software for Plunger Lift Valve Control is included with the XFC. Consult the XFC User Manual to set-up and operate:

*XFC-Series Flash  
IEC Advanced  
IEC w/Safety  
Turner Curve*



**XFC TO CASING PRESSURE & TUBING PRESSURE TRANSDUCERS**

REF: N/A

<b>ABB</b> TOTALFLOW Products	ACTION	DOC TYPE	TITLE	DWG NO.	REV	SHEET
	D21583	UD	PLUNGER LIFT ON/OFF FOR XFC (2100204 BD) W/VERSA-VALVES	2103174	AB	1 OF 2

NOTES, continued:

3. LED Indicators:

Run LED – Blinking indicates on-board PIC running.

Activity LED – Blinking indicates buss activity.

Mode LED – 00 = Normal 01 = Reset

4. LED Operation:

Register 0.7.7 = 0 – Power Save Mode (LEDs off when MMI disconnected)

Register 0.7.7 = 1 – LEDs on all the time.

5. Dip Switch factory default address is set at 0.

If another COMBO IO/VC INTF TFIO is added, move that Dip Switch setting to 1. If more are added, use the next address in line for each.

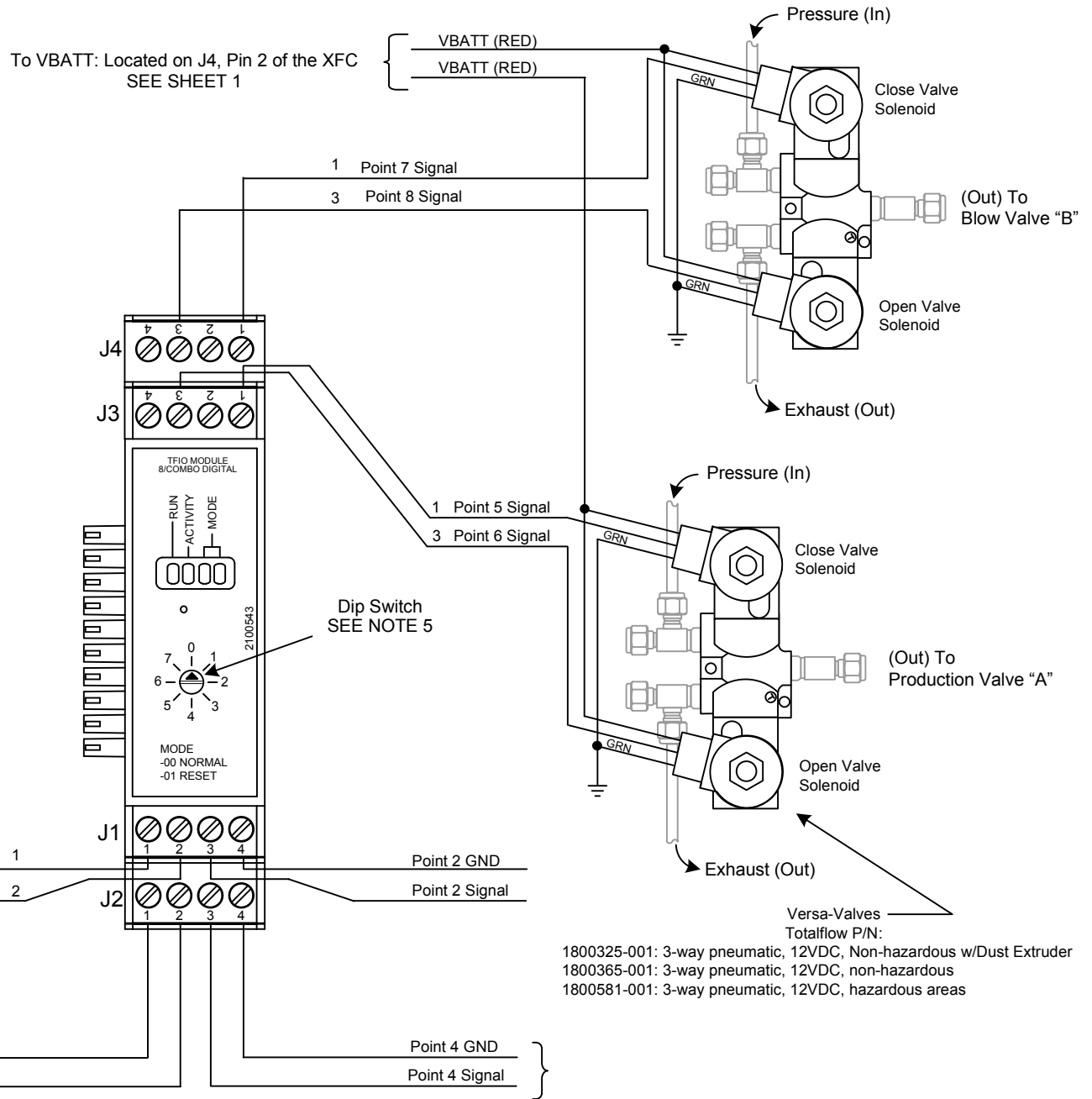
Changing the address applies only to TFIOs of their own type, and not TFIOs of another type; those would also start at 0 and add new address of their own.

TIP: While 0 is recommended for the first one, any address can be used (But keep in mind the original config files in our software are built with this address and factory tests will look for it).

If a 3-Wire Sensor is used, wire Signal and GND as shown, and add Power from VBATT; J4, Pin 2 of the XFC. SEE SHEET 1

Arrival Sensor (2-Wire)

There are 8 configurable points available on the I/O Module (The wiring interconnect shown has used 5 of them). Each point can be configured to be either an Input, and/or an Output.



TFIO 8-POINT COMBO DI/DO/PI MODULE (2100543), PRODUCTION VALVE "A", BLOW VALVE "B" AND ARRIVAL SENSOR

Versa-Valves  
Totalflow P/N:  
1800325-001: 3-way pneumatic, 12VDC, Non-hazardous w/Dust Extruder  
1800365-001: 3-way pneumatic, 12VDC, non-hazardous  
1800581-001: 3-way pneumatic, 12VDC, hazardous areas

<b>ABB</b>	TOTALFLOW Products	ACTION	DOC TYPE	TITLE	DWG NO.	REV	SHEET
		D21583	UD	PLUNGER LIFT ON/OFF FOR XFC (2100204 BD) W/VERSA-VALVES	2103174	AB	2 OF 2