

Automatic transfer switches



Section 9

Automatic transfer switches

Table of contents

TruONE™ ATS	
Ordering code construction	9-1
Switches	9-2
Accessories	9-2

TruONE™ automatic transfer switch

Ordering code construction

ABB TruONE automatic transfer switch, open transition, 1000 amperes, UL, 3 phase + Neutral (3ph, 4 wire), Level 4 controls, 200–480 VAC voltage area, bottom entry (sources on bottom, load on top).

OX	A	1000	U	3	S	4	Q		B
ABB Brand OX = ABB TruONE ATS									
ATS type A = Open transition I - II (without stable OFF position for load disconnection) B = Delayed transition I - O - II (with stable OFF position for load disconnection)									Cabling direction Open style, no enclosure B = Bottom entry (sources on bottom, load on top) T = Top entry (sources on the top, load on the bottom)
ATS size UL = 30, 60, 100, 125, 160, 200, 260, 400, 600, 800, 1000, 1200 IEC = 200, 250, 315, 400, 500, 630, 800, 1000, 1250, 1600									Enclosure rating Blank = (blank) Open style, no enclosure
Standard E = IEC U = UL									Voltage code Q = 200–480 VAC
Phase poles 1 = 1-pole 2 = 2-pole 3 = 3-pole									Controller 2 = Level 2 controls (DIP) 3 = Level 3 controls (LCD) 4 = Level 4 controls (Touch)
									Neutral S = Switched Neutral O = Overlapping Neutral X = None

Controller	Mode of control	Features
Level 2	DIP switch	Standard control with limited options
Level 3	LCD screen	Advanced control with optional module for communication and programmable I/O module
Level 4	Touch screen	Superior control with level 3 features and power measurement & predictive maintenance

TruONE™ automatic transfer switch

Switches and accessories



TruONE switches

AMP	Poles	Controller	Voltage code	Transition Type	Cabling direction	Ordering Code
60	3	Level 2 controls (DIP)	200-480 VAC	Delayed	Top	OXB60U3X2QT
100	3	Level 3 controls (LCD)	200-480 VAC	Open	Bottom	OXA100U3X3QB
100	3	Level 3 controls (LCD)	200-480 VAC	Open	Top	OXA100U3X3QT
200	3	Level 3 controls (LCD)	200-480 VAC	Open	Bottom	OXA200U3X3QB
200	4	Level 3 controls (LCD)	200-480 VAC	Open	Bottom	OXA200U3S3QB
200	4	Level 3 controls (LCD)	200-480 VAC	Open	Top	OXA200U3S3QT
200	3	Level 3 controls (LCD)	200-480 VAC	Delayed	Bottom	OXB200U3X3QB
400	4	Level 3 controls (LCD)	200-480 VAC	Open	Bottom	OXA400U3S3QB
400	3	Level 4 controls (Touch)	200-480 VAC	Open	Bottom	OXA400U3X4QB
400	3	Level 3 controls (LCD)	200-480 VAC	Delayed	Bottom	OXB400U3X3QB
600	3	Level 3 controls (LCD)	200-480 VAC	Open	Bottom	OXA600U3X3QB
600	3	Level 3 controls (LCD)	200-480 VAC	Open	Top	OXA600U3X3QT
600	4	Level 4 controls (Touch)	200-480 VAC	Delayed	Bottom	OXB600U3S4QB
800	3	Level 4 controls (Touch)	200-480 VAC	Open	Bottom	OXA800U3X4QB
800	4	Level 4 controls (Touch)	200-480 VAC	Delayed	Top	OXB800U3S4QT
800	3	Level 4 controls (Touch)	200-480 VAC	Delayed	Top	OXB800U3X4QT
800	4	Level 3 controls (LCD)	200-480 VAC	Open	Bottom	OXA800U3S3QB
800	4	Level 4 controls (Touch)	200-480 VAC	Delayed	Bottom	OXB800U3S4QB
1000	3	Level 3 controls (LCD)	200-480 VAC	Open	Bottom	OXA1000U3X3QB
1200	3	Level 3 controls (LCD)	200-480 VAC	Open	Bottom	OXA1200U3X3QB
1200	4	Level 3 controls (LCD)	200-480 VAC	Open	Bottom	OXA1200U3S3QB
1200	4	Level 4 controls (Touch)	200-480 VAC	Delayed	Bottom	OXB1200U3S4QB
1200	3	Level 4 controls (Touch)	200-480 VAC	Delayed	Top	OXB1200U3X4QT

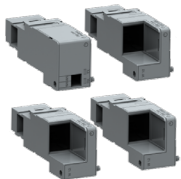


OXEA1

Accessories

Auxiliary power supply module

Suitable for switches	Aux Voltage	Ordering Code
OX30...1600	12-24 Vdc	OXEA1



EKIP COM

Communication modules

Suitable for switches	Protocol	Ordering Code
OX30...1600	EKIP COM MODBUS TCP	ZEAMODTCP
OX30...1600	EKIP COM MODBUS RS-485	ZEAMOD485



EKIP 2K SIGNALLING

Signalling Modules for Level 3 and Level 4 controllers

Suitable for switches	Type	Ordering Code
OX30....1200	TRUONE IO MOD 2I/2O MKG:11,12/11,12	2K-1-OX
OX30....1200	TRUONE IO MOD 2I/2O MKG:21,22/21,22	2K-2-OX

TruONE™ automatic transfer switch

Accessories



EKIP PROGRAMMING

Ekip Programming module		
Suitable for switches	Type	Ordering Code
OX30...1600	EKIP Programming	ZEAEKPPGM



OXES_S

Terminal shrouds		
Suitable for switches	Type	Ordering Code
OX30....1200	TERM SHROUD TRUONE UL30-200A L 3PC	OXES250G1L/3
OX30....1200	TERM SHROUD TRUONE UL30-200A L 4PC	OXES250G1L/4
OX30....1200	TERM SHROUD TRUONE UL30-200A S 3PC	OXES250G1S/3
OX30....1200	TERM SHROUD TRUONE UL30-200A S 4PC	OXES250G1S/4
OX30....1200	TERM SHROUD TRUONE UL260-600A L 3PC	OXES800G1L/3
OX30....1200	TERM SHROUD TRUONE UL260-600A L 4PC	OXES800G1L/4
OX30....1200	TERM SHROUD TRUONE UL260-600A S 3PC	OXES800G1S/3
OX30....1200	TERM SHROUD TRUONE UL260-600A S 4PC	OXES800G1S/4
OX30....1200	TERM SHROUD TRUONE UL800-1200 L 3PC	OXES1600G1L/3
OX30....1200	TERM SHROUD TRUONE UL800-1200 L 4PC	OXES1600G1L/4



OXES_L



OXEB_

Phase barriers		
Suitable for switches	Type	Ordering Code
OX30...1600	30 -1200 Amps, 3 Pole	OXEB1600/4
	30 - 1200 Amps, 4 Pole	OXEB1600/6



OXEC21

HMI Protective cover, IP54, NEMA 3R rated		
Suitable for switches	Type	Ordering Code
OX30...1600	TRUONE HMI PROTECT COVER UL30-1200	OXEC21

TruONE™ automatic transfer switch

Accessories



OA1G10



OA3G01

Auxiliary contacts

Suitable for switches	Type	Ordering Code
OX30....1200	1-NO AUX SW OT/OS	OA1G10
OX30....1200	AUX SWITCH 1NC OS/OT	OA3G01



OZXA-26

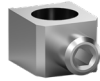


OZXA-25

Terminal Lug kits

Type	Wire Range	Wires per lug	2 lugs kit	3 lugs kit	4 lugs kit	6 lugs kit
OZXA-100	14-2/0 AWG	1			OZXA-100/4P	OZXA-100
OZXA-24	14-2/0 AWG	1	OZXA-24/2P	OZXA-24/3P	OZXA-24/4P	
OZXA-200	4 AWG - 300kcmil	1			OZXA-200/4	OZXA-200
OZXA-25	6 AWG - 300kcmil	1	OZXA-25/2P	OZXA-25/3P	OZXA-25/4P	
OZXA-400	2 AWG - 600kcmil	1			OZXA-400/4	OZXA-400
OZXA-26	2 AWG - 600kcmil	1	OZXA-26/2P	OZXA-26/3P	OZXA-26/4P	
OZXA-412	2 AWG - 600kcmil	1 or 2			OZXA-412/4P	OZXA-412
OZXA-412L	2 AWG - 600kcmil	1 or 2	OZXA-412L/2P	OZXA-412L/3P	OZXA-412L/4P	
OZXA-800E	2 AWG - 600kcmil	2			OZXA-800E/4P	OZXA-800E
OZXA-800S	2 AWG - 600kcmil	2			OZXA-800S/4P	OZXA-800S
OZXA-800LT	2 AWG - 600kcmil	2	OZXA-800LT/2	OZXA-800LT/3	OZXA-800LT/4	
OZXA-1200	2 AWG - 600kcmil	4			OZXA-1200/4	OZXA-1200

- (1) One complete kit contains enough pieces for both Source S2 and Load terminals.
- (2) Apply 2 pieces to Source S2 terminal of each pole.
- (3) One complete kit contains enough pieces for both Load and Source S1 terminals.



OZXA-200



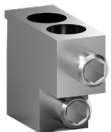
OZXA-100



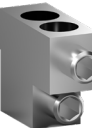
OZXA-24



OZXA-400



OZXA-800S



OZXA-800E



OZXA-1200