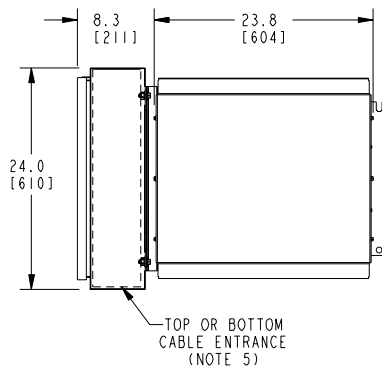
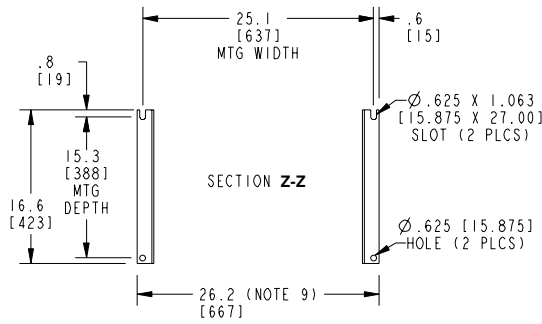


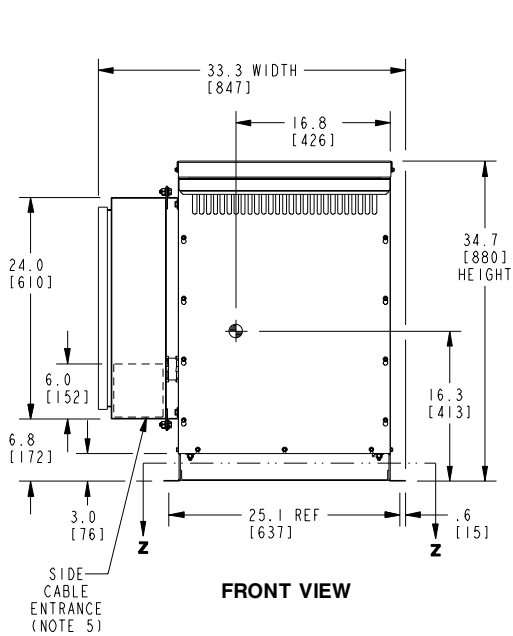
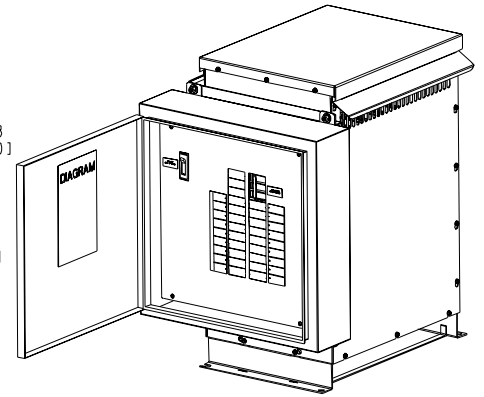
**TOP VIEW**



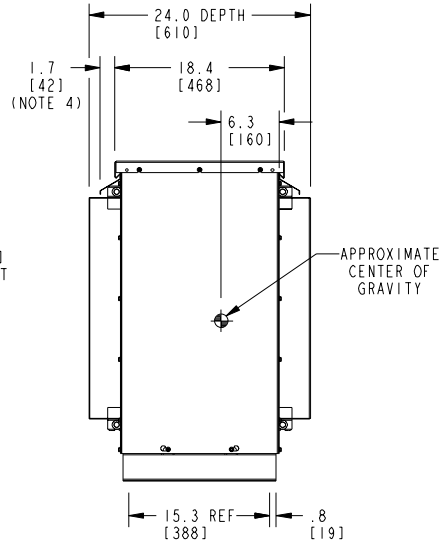
**BOTTOM VIEW OF MOUNTING HOLE PATTERN**



**ISOMETRIC VIEW**



**FRONT VIEW**



**SIDE VIEW**

**APPROX TOTAL WEIGHT LBS [KG]**

STAINLESS STEEL (AL): 443 [201]  
STAINLESS STEEL (CU): 496 [211]

**kVA RATING:**  
**K-FACTOR:**  
**PRI VOLTAGE:**  
**SEC VOLTAGE:**  
**FREQ (Hz):**  
**TEMP RISE:**  
**WINDING MATL:**  
**ES SHIELD:**  
**SOUND LVL (dB):**

**NOTES:**

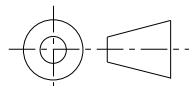
- 1) ALL UNITS ARE UL LISTED AND ARE DESIGNED PER NEMA ST-20 STANDARDS.
- 2) TRANSFORMER IS DESIGNED FOR FLOOR MOUNTING. OPTIONAL WALL MOUNTING BRACKETS ARE NOT AVAILABLE FOR THIS DESIGN/STYLE.
- 3) TRANSFORMER IS DRY TYPE, CLASS AA, WITH VENTILATED ENCLOSURE FOR INDOOR USE. OPTIONAL RAIN SHIELD KITS ARE INCLUDED TO CONVERT UNIT TO TYPE 3R OUTDOOR USE WITHOUT VOIDING THE WARRANTY.
- 4) APPLICABLE WHEN OPTIONAL RAIN SHIELDS ARE INSTALLED. RAIN SHIELDS ARE SHIPPED IN KITS FOR FIELD INSTALLATION.
- 5) CABLE ENTRANCE IS PERMITTED THROUGH THE TOP OR BOTTOM OF THE BREAKER BOX OR UP TO 4" [102 MM] FROM THE BOTTOM OF EITHER SIDE OF THE BOX ONLY. CABLE ENTRANCE IS NOT PERMITTED THROUGH THE FRONT OR REAR OF BREAKER BOX.
- 6) FOR LIFTING OTHER THAN WITH A FORK TRUCK, REMOVE TOP COVER AND USE 1" [25 MM] DIAMETER HOLES IN THE TOP CORE CLAMPS.
- 7) ENCLOSURE STAINLESS STEEL 316, FINISH #80 GRIT.
- 8) 6" [152 MM] MINIMUM CLEARANCE IS REQUIRED FROM ALL WALLS.
- 9) USE THIS DIMENSION WHEN PLANNING THE MOUNTING PAD.
- 10) CUSTOMER CABLE MUST BE RATED 75°C OR HIGHER AND MAY BE EITHER COPPER OR ALUMINUM.

**JOB NAME:**

UNLESS OTHERWISE SPECIFIED  
ALL DIMENSIONS ARE INCH [MM]



THIRD ANGLE PROJECTION



**DRY TYPE TRANSFORMER OUTLINE DRAWING  
TYPE QL, SERVICENTER, 3-PHASE, DOE 2016 EFFICIENCY  
(STAINLESS STEEL ENCLOSED UNIT)**

[electrification.us.abb.com](http://electrification.us.abb.com)

CAD DRAWING: 303B424SSP022

SHEET 1 OF 1

CATALOG #

REV **3**