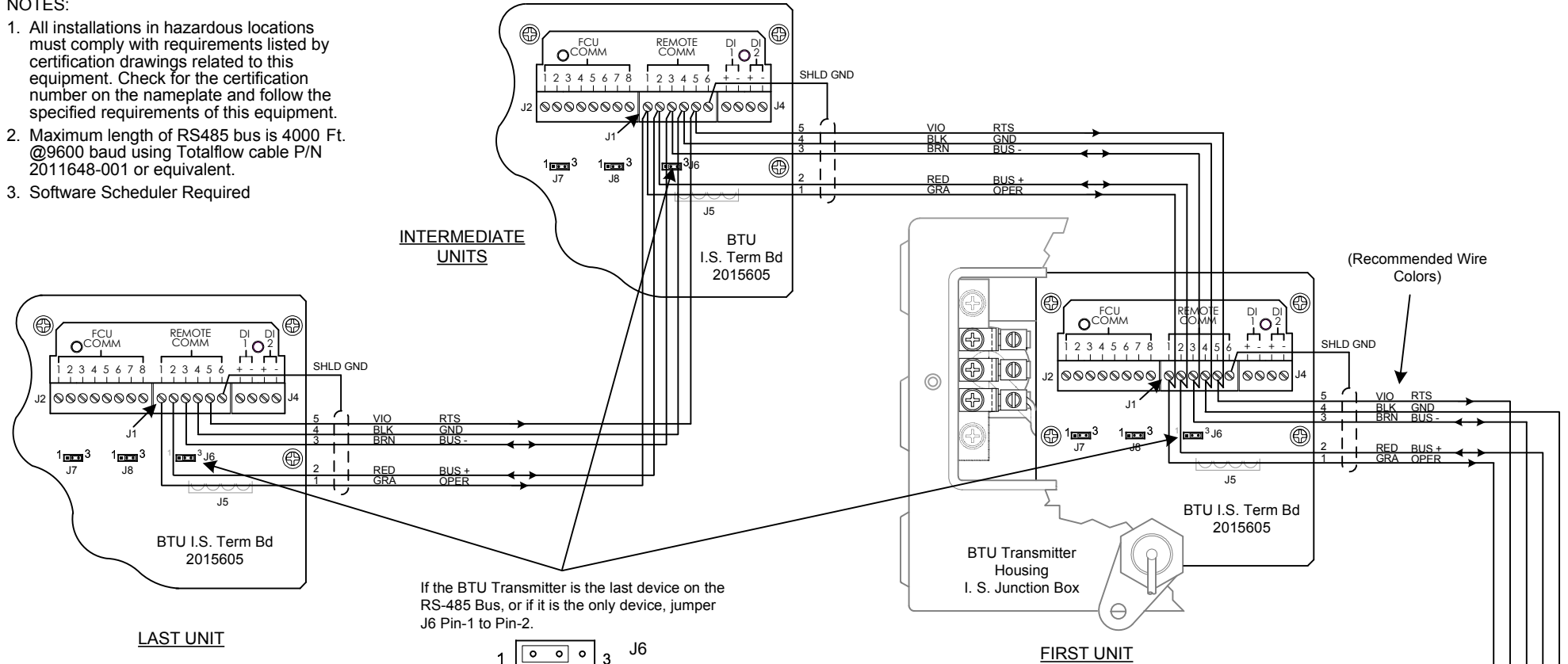


NOTES:

1. All installations in hazardous locations must comply with requirements listed by certification drawings related to this equipment. Check for the certification number on the nameplate and follow the specified requirements of this equipment.
2. Maximum length of RS485 bus is 4000 Ft. @9600 baud using Totalflow cable P/N 2011648-001 or equivalent.
3. Software Scheduler Required

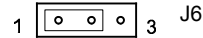


INTERMEDIATE UNITS

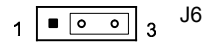
LAST UNIT

FIRST UNIT

If the BTU Transmitter is the last device on the RS-485 Bus, or if it is the only device, jumper J6 Pin-1 to Pin-2.



If it is not the last device, jumper J6 Pin-2 to Pin-3 (Pin-1 is on the left, when viewing the I.S. Board).

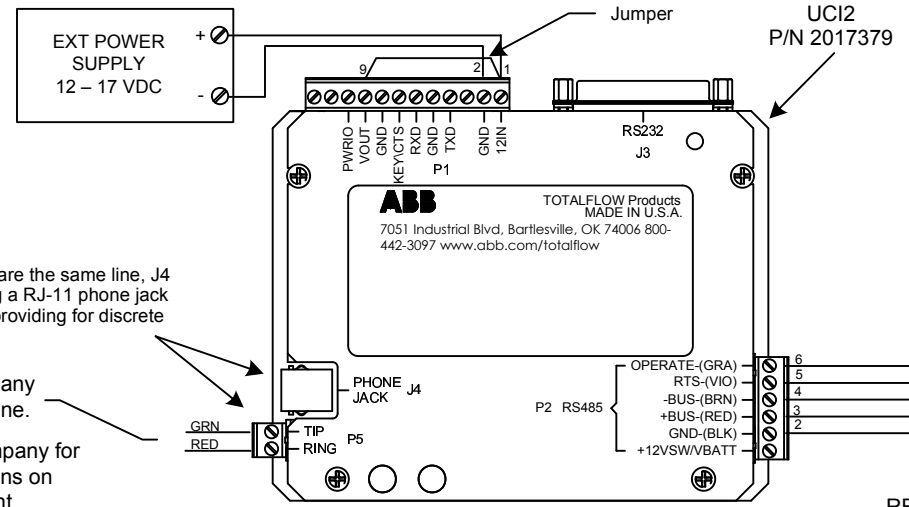


4. Units must be daisy-chained; No Star Configurations.
5. Cable Shielding – Cable segments between units should have their shields terminated on one end only. The RS-485 Cable (P/N 2011648-001) has two shields, each with its own drain wire. When connecting multiple units together, connect the two drain wires on the first unit to one of the two ground screws on the bottom left-hand side of the enclosure. Cut the cable and terminate the wiring on the second unit but do not connect the drain wires. On the next segment between the second and third units, connect the two drain wires to the second unit but not to the third unit. Repeat this process until all units are wired.

J4 & P5 are the same line, J4 providing a RJ-11 phone jack and P5 providing for discrete wiring.

To phone company if using phone line.

See phone company for recommendations on surge equipment.



(Recommended Wire Colors)

REF: N/A

| | | | | | | | |
|------------|-----------|--------|----------|---|---------|-----|--------|
| ABB | TOTALFLOW | ACTION | DOC TYPE | TITLE | DWG NO. | REV | SHEET |
| | Products | L18396 | UD | BTU8000/8100 REMOTE COMM PORT (2015605 BD) TO UCI2 W/EXT PWR (RS-485) | 2102465 | AA | 1 OF 1 |