

PRODUCT SHEET

T&B® Cable Tray

Super-Duty Splice Plate™



Reduce structural supports and installation costs with the Super-Duty Splice Plate™ for expansion and mid-span splicing.

— 01 Expansion splice

— 02 Mid-span splice

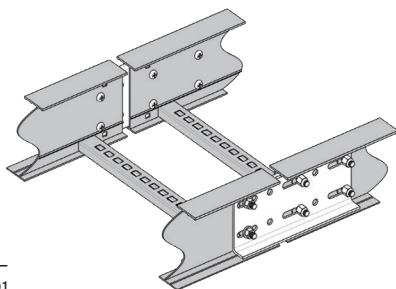
Note: For purposes of illustration, bonding jumper not shown but is required at expansion joints

The ultra-robust Super-Duty Splice Plate allows cost-efficient expansion by reducing the need for structural supports. It can also be used for sturdy mid-span splicing. Engineers, end users and contractors benefit from significant cost reductions without sacrificing quality or structural integrity.

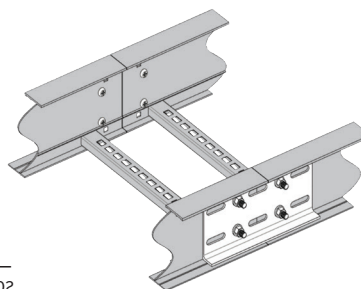
- Enables the use of less NEMA-recommended structural supports at the expansion joint, significantly reducing project material and labor costs
- Unique, reinforced design eliminates the need to drill and install additional hardware on the flange, saving time during installation
- Nylon washers make movement easier and reduce friction. No lubrication of the side rail required during installation or maintenance

- Extra-wide (13"/330mm) high-strength, heat-treated aluminum
- Unique design maximizes rigidity, resistance and overall strength
- Nylon washers make movement easier, reduce friction
- No hardware required for installation on flange
- Allows for true contraction/expansion under full loads
- Plate is pre-drilled for both expansion and mid-span applications
- Supplied with all hardware required for both types of installation

For maximum job site flexibility, the Super-Duty Splice Plate can also be used for mid-span splicing.



— 01



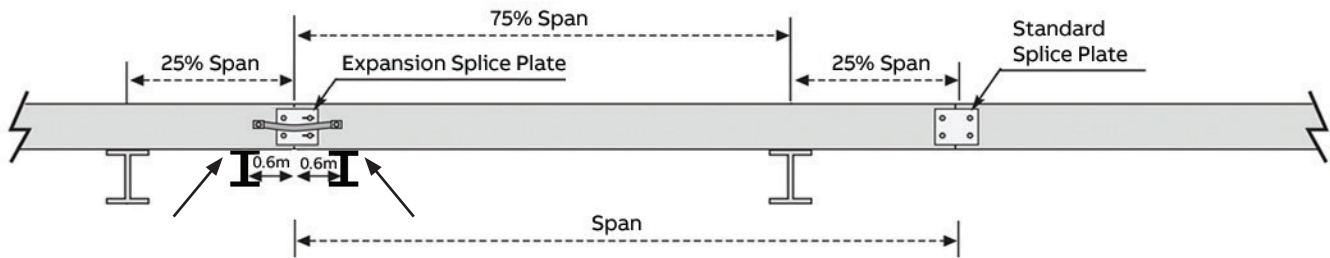
— 02

T&B® Cable Tray

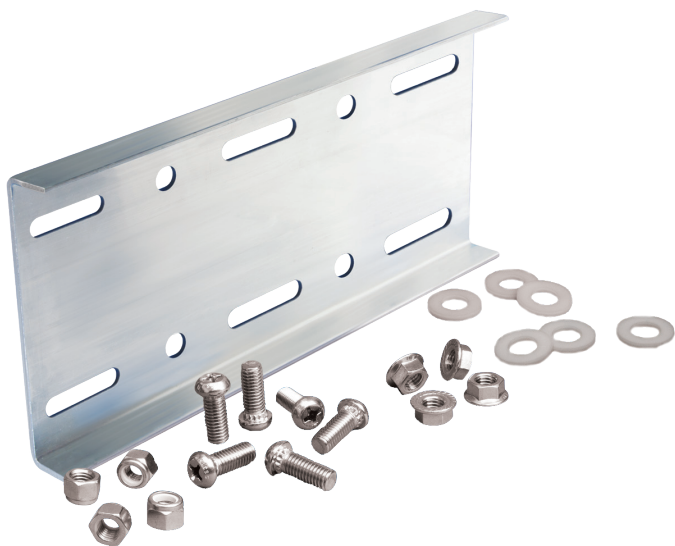
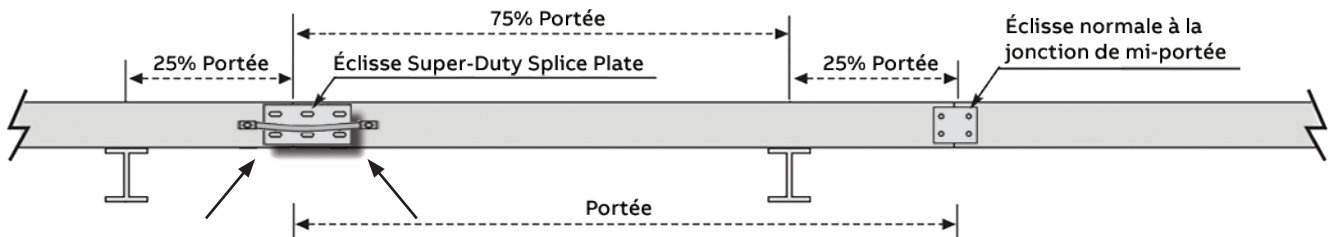
One splice plate, two solutions

Expansion splicing eliminates the need for additional NEMA-recommended supports

NEMA installation with additional supports



No additional supports needed with Super-Duty Splice Plate™



The Super-Duty Splice Plate comes complete with all hardware required, for either expansion or mid-span splicing.

Kit includes:

- 2 Super-Duty Splice Plates
- 8 nylon insert locknuts
- 8 serrated flanged locknuts
- 12 nylon washers (spacers)
- 12 hexagon socket button head cap screws
- Instruction sheet

01 One Super-Duty Splice Plate and its hardware included in a complete kit of two

T&B® Cable Tray

Super-Duty Splice Plates

Cat. no.	Description	T&B Cable Tray Compatibility	Application
ABW4SDP	Super-Duty Splice Plate 4 inches	Rated for series AH14, AH34, AH54	Mid-span Quarter span expansion
ABW5SDP	Super-Duty Splice Plate 5 inches	Rated for series AH25, AH45	Mid-span Quarter span expansion
ABW6SDP	Super-Duty Splice Plate 6 inches	Rated for series AH36, AH46, AH56, AH66	Mid-span Quarter span expansion
ABW7SDP	Super-Duty Splice Plate 7 inches	Rated for Series AH37 and AH47	Mid-span (Both AH37 and AH47 should be used with AH37 loading) Quarter span expansion

Refer to technical data sheet TDS000785 for more information.

ABB Installation Products

Electrification Business
700 Thomas Avenue
Saint-Jean-sur-Richelieu, Quebec J2X 2M9

tnb.ca.abb.com
contact.center@ca.abb.com
+1 800 435-7365