

## TECHNICAL DATA SHEET

**PMA Accessories - FGO4 - Flange seal****PMA****Applications:**

- For PMAFIX system with flange 90° elbow (BVOV, BVOD), nominal widths 17 - 48
- For PMAGRIP system with flange 90° elbow (BGOV, BGO) and straight (BGGV, BGG), nominal widths 56 - 125

**Features & Benefits:**

- Very good weathering and temperature resistance

**Ingress protection:**

- Allows a max. IP rating up to IP68

**Materials:**

- EPDM cellular rubber

**Compatible with:**

- PMAFIX fittings
- PMAGRIP flange

**Colour:**

- Black

**Chemical properties:**

- Excellent resistance to fats, alkalis and acids  
Please refer to [www.pma.ch](http://www.pma.ch)  
(Technical Information / Chemical Resistance)

**Environmental properties:**

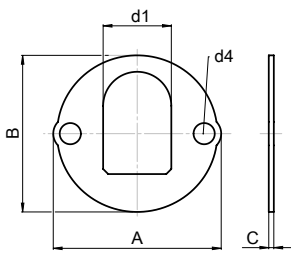
- Free from halogens and cadmium
- RoHS and REACH compliant

**Product selection:**

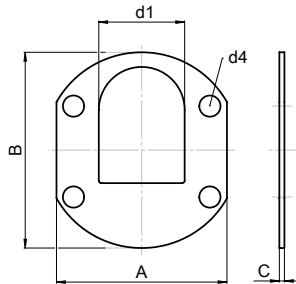
Part no.	Conduit size	Dimensions in mm (nom.)					Weight	Packing unit
		d1	d4	A	B	C		
	NW	d1	d4	A	B	C	kg/100 pcs	pcs/PU
FGO4-17	17	21.5	7.3	47.0	45.0	2.0	0.2	50
FGO4-23	23	27.0	8.4	66.0	62.0	2.0	0.4	30
FGO4-29	29	34.0	8.4	67.5	77.5	2.0	0.5	20
FGO4-36	36	41.7	8.4	86.0	87.5	2.0	0.6	20
FGO4-48	48	54.0	8.4	86.0	117.0	2.0	0.7	10
FGO4-56	56	63.0	9.4	82.0	97.0	3.0	0.8	10
FGO4-70	70	76.5	9.4	97.0	114.0	3.0	1.0	10
FGO4-95	95	104.0	9.4	126.0	146.0	3.0	1.5	10
FGO4-125	125	142.0	9.4	-	194.0	3.0	2.0	10

Our customer service dept. or local distribution partner will be pleased to help you concerning product availability and lead time

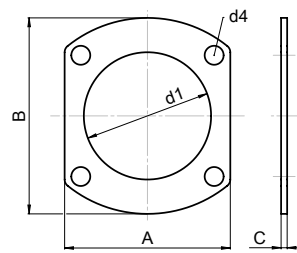
NW17 + NW23



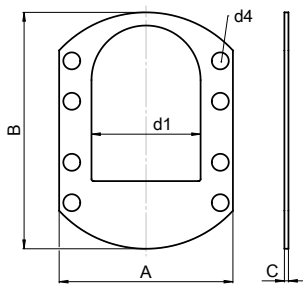
NW29 + NW36



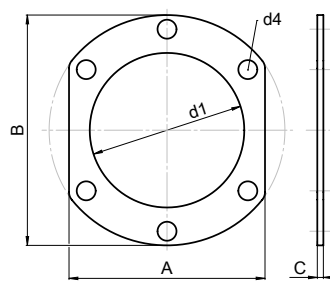
NW56



NW48



NW70 + NW125



Thermal properties:	Value:	Test parameters:	Test method:
Continuous application temperature	-50 ... +105°C		PMA DO 9.21-4510
Upper application temperature	+120°C	(20'000 h)	PMA DO 9.21-4360
Short-term	+160°C	(168 h)	PMA DO 9.21-4360

#### Content of delivery:

- Flange seal

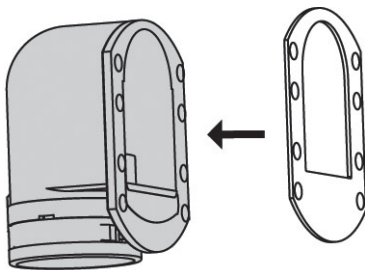
#### Assembly instructions:

- PMA FGO4 and FGO4/01 flange seals demonstrate good sealing performance up to IP68, according to IEC 60529, when installed onto surfaces with a mean surface roughness of up to and including Ra 6.3.

For surfaces with a higher mean surface roughness sealing performance tests may be required in the application to demonstrate suitability.

Please consider the appropriate assembly instructions on [www.pma.ch](http://www.pma.ch)

PMAFIX with flange system  
(IP68/IP66)



PMAGRIP with flange  
(IP67/IP65)

