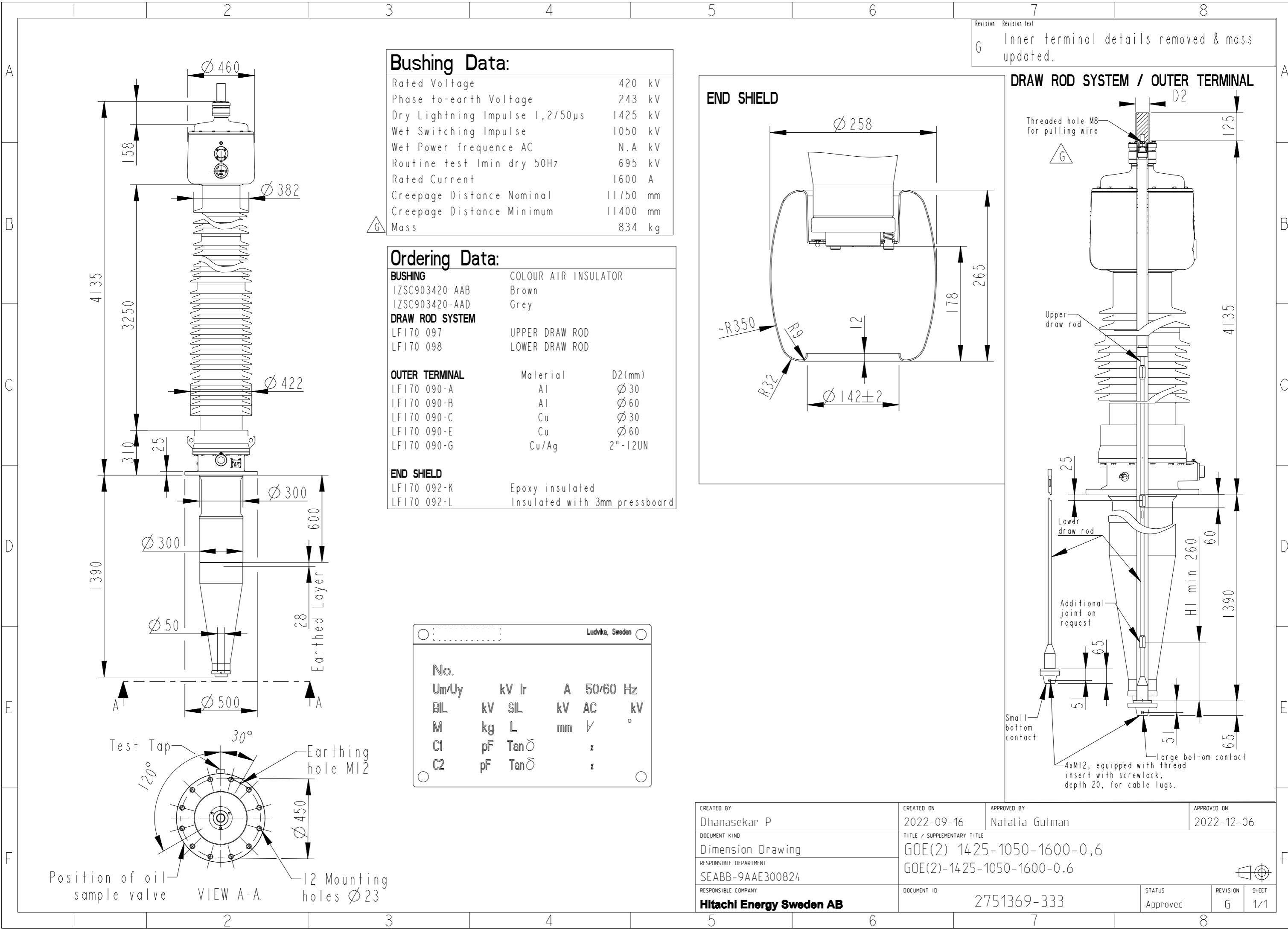


This document is issued by means of a computerized system. The digitally stored original is electronically approved. The approved document has a date entered in the "Approved"-field. A manual signature is not required.

We reserve all rights in this document and in the information contained therein. Reproduction, use or disclosure to third parties without express authority is strictly forbidden. © 2022 Hitachi Energy.



Bushing Data:

Rated Voltage	420 kV
Phase to-earth Voltage	243 kV
Dry Lightning Impulse 1,2/50 μ s	1425 kV
Wet Switching Impulse	1050 kV
Wet Power frequency AC	N.A kV
Routine test Imin dry 50Hz	695 kV
Rated Current	1600 A
Creepage Distance Nominal	11750 mm
Creepage Distance Minimum	11400 mm
Mass	834 kg

Ordering Data:

BUSHING	COLOUR AIR INSULATOR	
IZSC903420-AAB	Brown	
IZSC903420-AAD	Grey	
DRAW ROD SYSTEM		
LF170 097	UPPER DRAW ROD	
LF170 098	LOWER DRAW ROD	
OUTER TERMINAL	Material	D2(mm)
LF170 090-A	Al	$\phi 30$
LF170 090-B	Al	$\phi 60$
LF170 090-C	Cu	$\phi 30$
LF170 090-E	Cu	$\phi 60$
LF170 090-G	Cu/Ag	2"-12UN
END SHIELD		
LF170 092-K	Epoxy insulated	
LF170 092-L	Insulated with 3mm pressboard	

Ludvika, Sweden					
No.					
Um/Uy	kV Ir	A	50/60 Hz		
BIL	kV SIL	kV AC	kV		
M	kg L	mm	∇	°	
C1	pF Tan δ		x		
C2	pF Tan δ		x		

Revision Revision text
G Inner terminal details removed & mass updated.

CREATED BY Dhanasekar P	CREATED ON 2022-09-16	APPROVED BY Natalia Gutman	APPROVED ON 2022-12-06
DOCUMENT KIND Dimension Drawing	TITLE / SUPPLEMENTARY TITLE GOE(2) 1425-1050-1600-0.6		
RESPONSIBLE DEPARTMENT SEABB-9AAE300824	GOE(2)-1425-1050-1600-0.6		
RESPONSIBLE COMPANY Hitachi Energy Sweden AB	DOCUMENT ID 2751369-333	STATUS Approved	REVISION G
		SHEET 1/1	