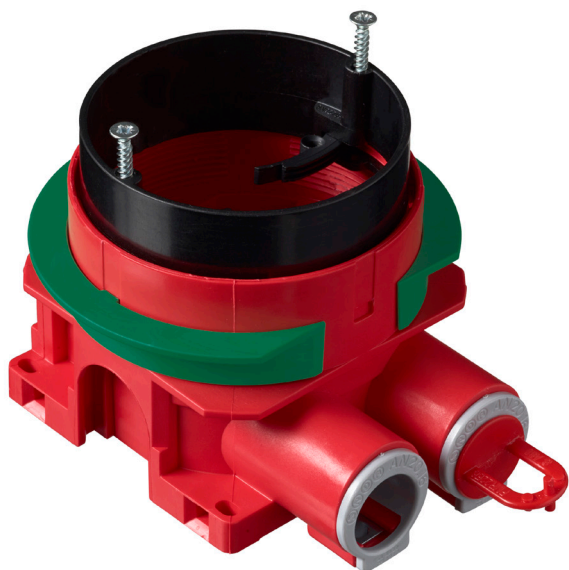


08/2021

AU60.10FR Mounting box for fire-rated partition walls

For EI30 and EI60 fire-rated walls



Installation box is certified to be used in EI60 and EI30 fire rated walls with different thicknesses due to its adapter ring. The AU60.10FR contains a fire cushion, made of expanding material, that prevents fire from spreading to walls.

Properties

- The structure of the installation ring makes adjusting the height easy, quick and reliable.
- Suitable 1 - 2 - 3 layers of EI30 and EI60 gypsum walls with thickness 12,5 – 40 mm without accessories.
- Protective cover and adapter ring are made of post-consumer recycled plastics and reducers are made of post-industrial recycled plastics.
- Solution for most demanding installation applications.
- Completes the ideal range to best installation range in Nordics.
- Compatible with all other ABB box accessories.



Order information

Type	Product ID	EAN	Description	Package
AU60.10FR	2TKA00004281	6438199008172	Mounting box for EI60 and EI30 fire rated walls	50

ABB Oy
Porvoon Sisäkehä 2, PO Box 16
FI-06101 Porvoo, Finland
Phone: +358 10 22 11

AU60.10FR features

Adjustable installation ring

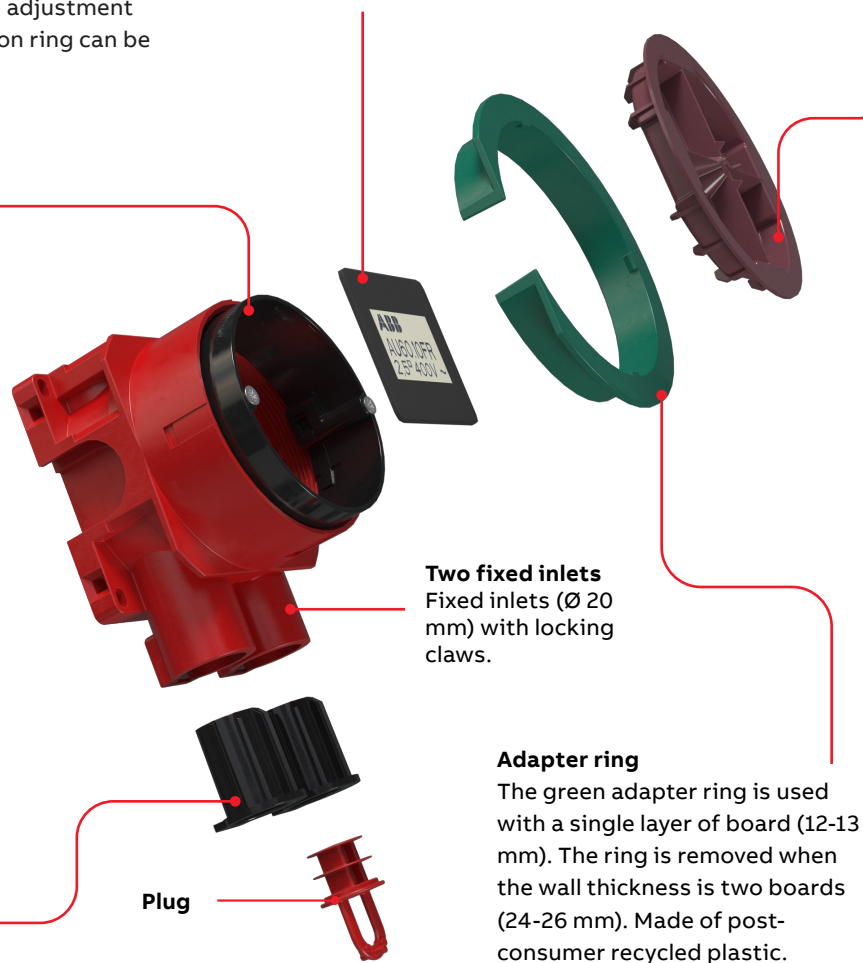
Installation ring can be adjusted by opening the fastening screws and turning the locking levers to the open position. There is an adjustment clearance of 14 mm. The extension ring can be tilted 0-4°.

Fire cushion

Fire cushion is fixed to base of the box, made of intumescent material, expands when the temperature rises as a result of fire. The expansion of the material in the event of fire seals the box, so the ceiling structure retains it's specified fire rating.

Box cover

Box cover are made of post-consumer recycled material.



Two fixed inlets
Fixed inlets (Ø 20 mm) with locking claws.

Adapter ring
The green adapter ring is used with a single layer of board (12-13 mm). The ring is removed when the wall thickness is two boards (24-26 mm). Made of post-consumer recycled plastic.

Reducers
Ø 20/16 mm on both fixed inlets. Made of post-industrial recycled plastic.

Plug



Step towards sustainability

We are working towards making System Ideal and System ABB the most sustainable ranges of flush mounted boxes on Nordic market. Ranges are produced in carbon neutral Nordic based production site with highest content of recycled base material on market (up to 50%).