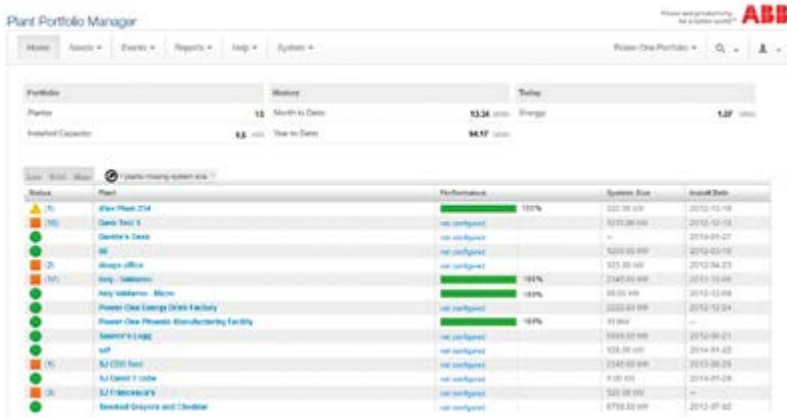


SOLAR INVERTERS

ABB monitoring and communications

Plant Portfolio Manager



Plant Portfolio Manager is a cost effective cloud based solar power plant portfolio monitoring product used to give power plant stakeholders such as installers/ operators/managers visibility into key energy and performance metrics required to install and operate a portfolio of solar power plants.

01

—
01
Plant Portfolio Manager

Plant Portfolio Manager provides the tools needed to complete the installation and operation of a power plant of any size which includes the ability to:

- Create new customer accounts, setup new power plants and provision monitoring at a given plant
- Configure, operate and troubleshoot devices throughout your portfolio of power plants
- Generate custom and scheduled reports for billing, finance and customers
- Remotely upgrade inverter firmware

Free monitoring for ABB inverters

Plant Portfolio Manager is available for free for all plants using ABB inverters.

Self Service tools for all your portfolio management needs

Aurora Vision Portfolio managers have all the tools needed to setup, install, operate and administer a portfolio of residential to utility scale solar power plants. It includes the ability to:

- Manage of inverters, loggers, combiners, weather stations and sensors used in a solar power plant
- Manage of plant sites, customer accounts and user logins within a portfolio
- Troubleshoot and reporting tools for solar power plants and devices in a portfolio

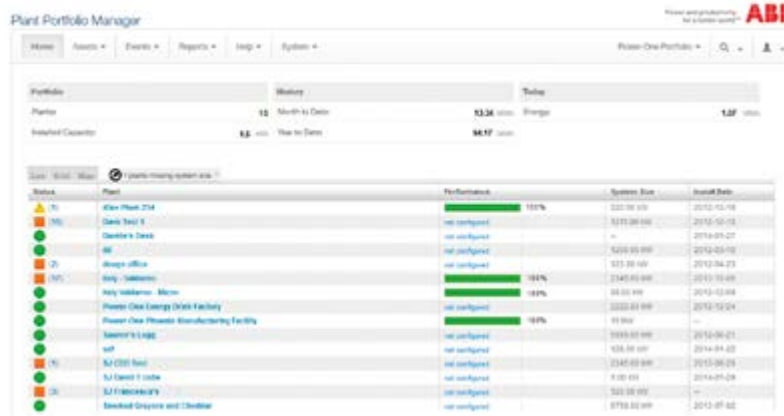
Low cost portfolio management

Solar installers, operators and investors control or outsource as much or little of their installation and operation responsibilities as makes sense for their business by sharing Aurora Vision's tools with business partners.

With Aurora Vision; solar installers, operators and investors can share the same remote diagnostic tools to collaboratively resolve solar power plant issues while simultaneously reducing the need for remote power plant visits.

Extensible and Modular Solution

Plant Portfolio Manager is integrated with ABB inverters and balance of system devices from both ABB and a broad array of 3rd party vendors. It provides out of box integration with meters, sensors, weather stations and combiners to provide fast, cost effective enablement of plant operations management.



Rapid Plant and Device Diagnostics

Analyze electrical and environmental characteristics of assets such as plants and devices which make up various parts of your plant such as ABB inverters, meters, string combiners, weather stations and sensors.

Improved Plant Performance

Optimize the operation and maintenance functions for a specific plant using performance information to rapidly identify and resolve issues.

Lifecycle Management of Plant Assets

Manage type, location, performance configuration of plant devices.

Operators can manage individual devices for compliance, control, and performance objectives.

Standard and Custom Portfolio Reports

Plant Portfolio Manager provides report access to all your data over the lifetime of your plant along with all the key data generated by your devices. Use standard or custom reports with various performance criteria for any duration for a single plant, set of plants or the entire portfolio of plants. Reports can be executed once or scheduled on a daily/ weekly/monthly basis to export all data in Excel™ or CSV formats.

For more information please contact your local ABB representative or visit:

www.abb.com/solarinverters
www.abb.com

We reserve the right to make technical changes or modify the contents of this document without prior notice. With regard to purchase orders, the agreed particulars shall prevail. ABB AG does not accept any responsibility whatsoever for potential errors or possible lack of information in this document.

We reserve all rights in this document and in the subject matter and illustrations contained therein. Any reproduction, disclosure to third parties or utilization of its contents – in whole or in parts – is forbidden without prior written consent of ABB AG. Copyright © 2017 ABB. All rights reserved.

