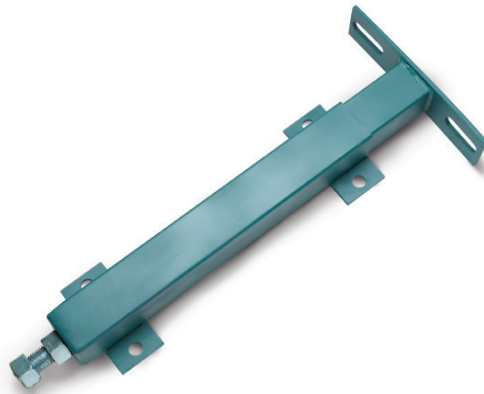


# TS Take-Up Frame Assemblies

These instructions must be read thoroughly before installing or operating this product.

**WARNING:** To ensure that drive is not unexpectedly started, turn off and lock out or tag power source before proceeding. Failure to observe these precautions could result in bodily injury.



## INSTALLATION

1. Make sure that the take-up frame will accommodate the required bearing.
2. Bolt frame to mounting structure using adequate bolts.
3. If two frame assemblies are used to support a shaft, make sure that the frames are parallel to each other to prevent binding and preloading of the bearing.
4. Mount bearing per the instruction manual supplied with the bearing.
5. Tighten bearing bolts.
6. When tensioning the belt of a conveyor system— insure that the two take-up frames move in tandem. Adjusting screws on each take-up should be turned simultaneously in small increments to prevent excessive misalignment loads on the bearings.
7. Do not extend the take-up frame beyond the rated travel.

**Note:** Take-up screw to be loaded in compression only

**WARNING:** Because of the possible danger to person(s) or property from accidents which may result from the improper use of products, it is important that correct procedures be followed: Products must be used in accordance with the engineering information specified in the catalog. Proper installation, maintenance and operation procedures must be observed. The instructions in the instruction manuals must be followed. Inspections should be made as necessary to assure safe operation under prevailing conditions. Proper guards and other suitable safety devices or procedures as may be desirable or as may be specified in safety codes should be provided, and are neither provided by Baldor Electric nor are the responsibility of Baldor Electric. This unit and its associated equipment must be installed, adjusted and maintained by qualified personnel who are familiar with the construction and operation of all equipment in the system and the potential hazards involved. When risk to persons or property may be involved, a failsafe device must be an integral part of the driven equipment beyond the speed reducer output shaft.





**World Headquarters**

P.O. Box 2400, Fort Smith, AR 72902-2400 U.S.A., Ph: (1) 479.646.4711, Fax (1) 479.648.5792, International Fax (1) 479.648.5895

**Dodge Product Support**

6040 Ponders Court, Greenville, SC 29615-4617 U.S.A., Ph: (1) 864.297.4800, Fax: (1) 864.281.2433

[www.baldor.com](http://www.baldor.com)

