

Operating Instructions Busch-AudioWorld®

Central unit 8202 U Busch-AudioWorld®



1	Safety.....	3
2	Intended use	3
2.1	Environment.....	3
3	Operation	4
3.1	Key assignment	4
3.1.1	Navigation menu	5
3.2	Overview of the menu structure	6
3.2.1	Function of the menu buttons.....	6
3.3	Adjusting the device	7
3.3.1	Selecting languages.....	7
3.4	Menu STATION	8
3.4.1	Change of station	8
3.4.2	Changing a stored station	8
3.4.3	Deleting stations	8
3.4.4	Determining the storage location of the radio station	8
3.5	Menu CHANNEL II	9
3.6	Menu VERSION.....	9
3.7	Menu QUIT	9
4	Technical data.....	10
5	Setup and function	11
5.1	Features of function and equipment.....	11
5.2	Possible combinations	12
6	Installation and electrical connection	12
6.1	Mounting	13
6.2	Requirements for the electrician	13
6.3	Connection.....	14
7	Mounting / Installation	15
7.1	Requirements for the electrician	15
7.2	General mounting instructions	15
8	Cleaning.....	15

1 Safety



Warning

Electric voltage!

Risk of death and fire due to electrical voltage of 230 V.

- Work on the 230V supply system may only be performed by authorised electricians!
- Disconnect the mains power supply prior to installation and/or disassembly!

2 Intended use

The device is part of the Busch-AudioWorld® system and is to be used exclusively with the components that are supplied and licensed as described in the "Structure and Function" chapter. The device must only be installed in dry indoor rooms.

2.1 Environment



Consider the protection of the environment!

Used electric and electronic devices must not be disposed of with domestic waste.

- The device contains valuable raw materials which can be recycled. Therefore, dispose of the device at the appropriate collecting depot.

All packaging materials and devices bear the markings and test seals for proper disposal. Always dispose of the packaging material and electric devices and their components via the authorized collecting depots and disposal companies.

The products meet the legal requirements, in particular the laws governing electronic and electrical devices and the REACH ordinance.

(EU Directive 2002/96/EC WEEE and 2002/95/EC RoHS)

(EU REACH ordinance and law for the implementation of the ordinance (EC) No.1907/2006)

3 Operation

3.1 Key assignment

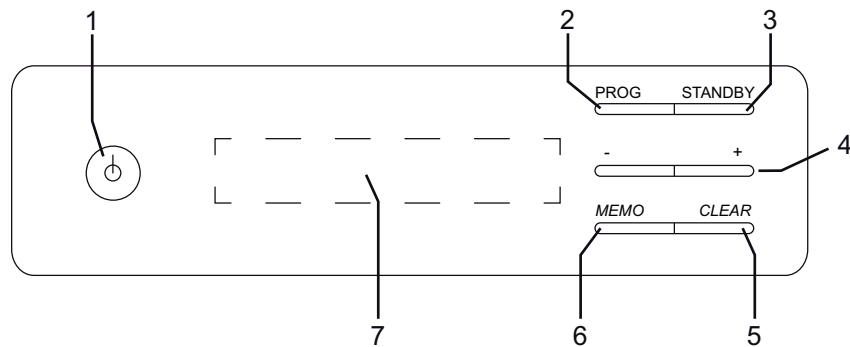


Fig. 1: Front

Operation

No.	Function
1	ON / OFF
2	PROG menu button / confirmation / station change
3	STANDBY circuit of central unit
4	+/- Next menu / change frequency
5	CLEAR delete station
6	MEMO station storage
7	Display

PROG

Use the "PROG" button to change the station, to confirm the setting or to select a menu item in the menu.

STANDBY

By pressing the "STANDBY" button the entire system goes into the idle state.

Pressing the "STANDBY" button once more reactivates the RDS tuner.

The device displays the radio station listened to last.

The amplifier insert must be switched on again to hear the radio signal.

MEMO

Pressing the "MEMO" button stores the activated station.

The station is called up after renewed activation.

CLEAR

With the "CLEAR" button you can delete a selected station.

3.1.1 Navigation menu

The navigation menu describes the basic options of a menu item and the response of the device.



Note

If a menu item is too long, it runs through the display.

Non-relevant functions

If a menu level and its setting options is not relevant for you, you can change to a different menu level by pressing the "plus / minus" buttons.

Incorrect menu selection

If you enter a menu item by mistake, press the "PLUS / MINUS" button until menu item EXIT or QUIT is displayed, and then button "PROG".

Confirming the setting

After a setting has been made and confirmed with the "PROG" button, the menu returns to the menu item.

Adjusting the volume

The volume can also be regulated via amplifier insert 8211 / 8212.

Setting the menu

The display of the menu item to be set is displayed.

- Press button + or - for the desired selection / frequency
- Confirm the selection by pressing the PROG button
- The device changes to the next menu to be set.

3.2 Overview of the menu structure

3.2.1 Function of the menu buttons

The device has a main menu with a subdivision of menu levels and menu items.

The menu levels consist of individual menu items in which the desired settings can be made.

Menu	Menu level	Menu item	Settings
	STATION	Save	Storing the station in the selected memory location
		Delete	Deleting a selected station
		Exit	Exiting the menu item
2 / 2	CHANNEL II	Tuner	Version info of tuner
		AUX	External input for other players
3 / 3	VERSION		Number of the device version
4 / 4	QUIT		Quits the menu

These menu levels and menu items are described in the following chapters.

3.3 Adjusting the device

3.3.1 Selecting languages

The "Language" menu is displayed automatically during initial commissioning.
The device offers you several languages for selection.

Selecting languages

1. Select the desired language with the "PLUS / MINUS" button.
2. Confirm your language selection with the "PROG" button.

3.4 Menu STATION

3.4.1 Change of station

1. Press the "PROG" continuously until you reach the desired memory location.

3.4.2 Changing a stored station

1. Keep the "PROG" pressed until the menu opens.
The display shows menu "STATION".
2. Confirm the menu with the "PROG" button.
3. Select the "Save" function with the "PLUS / MINUS" button.
4. Confirm your selection with the "PROG" button.
5. Set the desired transmitter frequency with the "PLUS / MINUS" button.
6. Confirm your entry with the "PROG" button.
7. Now select the "LOCATION" of the station with the "PLUS / MINUS" button.
8. Confirm the selection with the "PROG" button.
The device displays "Saved" and then asks "Further stations?"
9. Select "YES" or "NO" with the "PLUS / MINUS" button.
10. Confirm your selection with the "PROG" button.

3.4.3 Deleting stations

1. Select the station with the "PROG" button.
2. Press the "CLEAR" button for approx. 3 seconds.

The station is deleted.

3.4.4 Determining the storage location of the radio station

See item 7 in chapter 3.4.2 Changing a stored station

3.5 Menu CHANNEL II

In this menu you can select the output channel.
The device offers you two options.

CHANNEL II	Functions / settings
Tuner	Output via the central unit
AUX	Output via an external signal output

Select function

1. Select the desired function with the "PLUS / MINUS" button.
2. Confirm your selection with the "PROG" button.

3.6 Menu VERSION

This menu shows the currently used software version of the device.

1. Press the "PROG" button.
The device displays the software version.
2. Press the "PROG" button again. The display shows "QUIT"!
3. Press the "PROG" button to quit the menu.

The device shows the current frequency of the selected radio station.

3.7 Menu QUIT

With menu item "QUIT" you quit the menu.

1. When "QUIT" appears in the display, confirm quitting of the menu with the "PROG" button.

4 Technical data

Do not place the device on grounded surfaces!



Notes

The overload can be rectified by brief de-activation and re-activation. In case of permanent overload an additional power supply unit (item no. 8209-101) must be integrated into the system.

Designation	Value
Operating voltage:	230 V AC ± 10%, 50/60 Hz
Output voltage:	AC 15 V AC
Power loss standby:	< 500 mW
Rated maximum current:	1.2 A / SELV
Protection type:	IP 20
Temperature range:	5 °C to 40 °C
Dimensions (HxWxD):	53 x 203 x 201 mm
Frequency:	87.5 to 108.0 MHz
Receiver sensitivity:	1 V _{SS} , cinch connection

5 Setup and function

The central unit with RDS tuner is the output device for the control of sound for multiple rooms. The device is desktop device that can be freely combined with other components. It serves as power supply.

For optimal use and optimal function, several components are required (see possible combinations).



Note

A signal can only occur via a connected amplifier insert (e.g. 8211 / 8212) and via a loudspeaker insert (e.g. 8222).

For voice transmission

The intercom amplifier inserts serve for announcements only. They are applicable for specific voice messages in predefined rooms.

The music insert

The RDS tuner offer an audio input for receiving radio frequencies.

External player

An external device can be connected via the Busch-iDock station for special music requirements.



Note

The Busch-iDock-Station is not part of the scope of supply and must be ordered separately.

All components can be combined with each other and with other devices, of course, and are suited for almost all Busch-Jaeger switch ranges.

5.1 Features of function and equipment

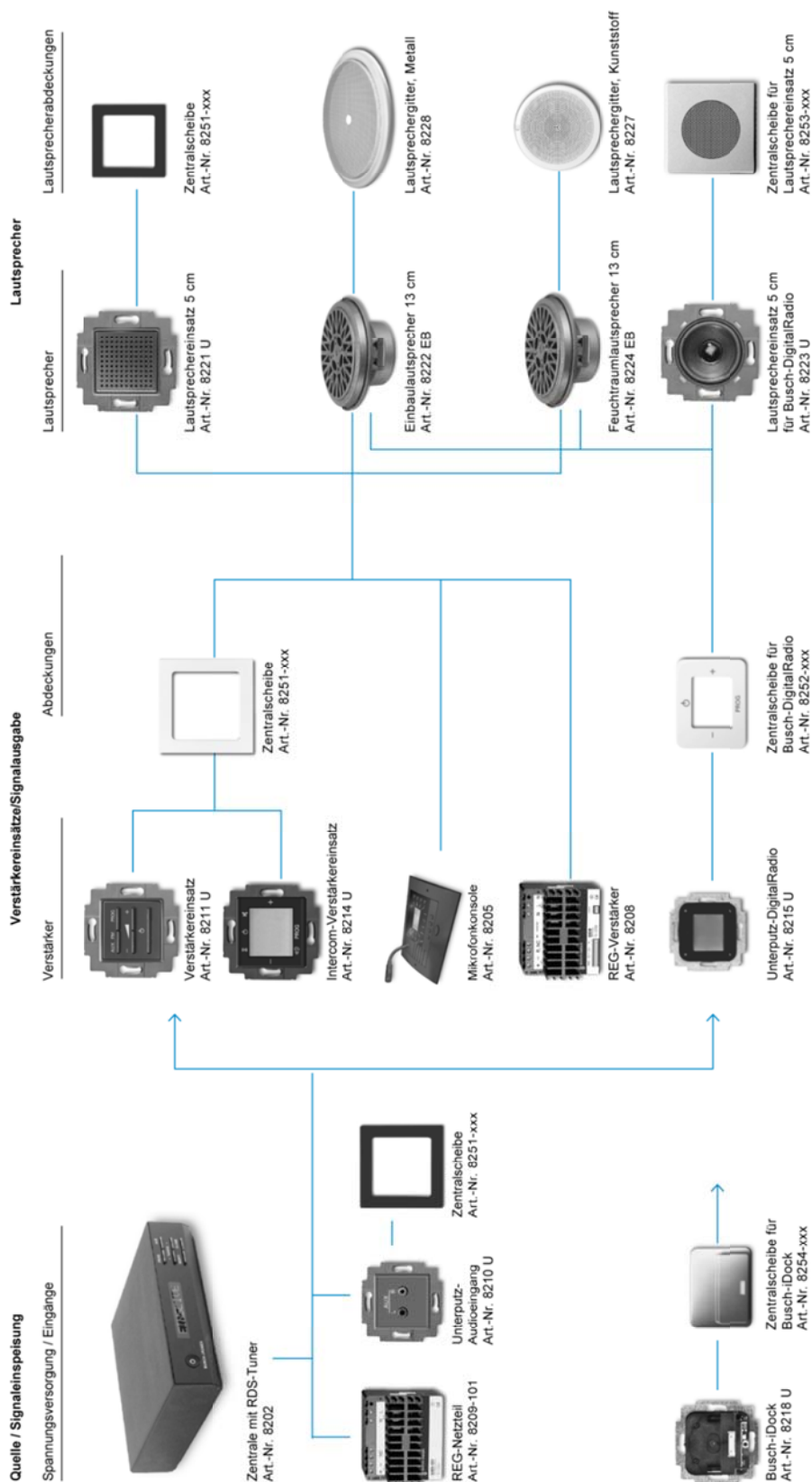
- Connection for 2 external sources, such as MP3 player, of which 1 source can be changed over to integrated tuners
- Memory for up to 8 radio stations
- Integrated RDS tuner
- Central switching for all playing units
- Central clock
- Intercom management function



Note

The intercom management function is defined for an intercom. Announcements can be controlled with this function.

5.2 Possible combinations



6 Installation and electrical connection

6.1 Mounting



Warning

Electric voltage!

Risk of death due to electrical voltage of 230 V during short-circuit in the low-voltage line.

- Low-voltage and 230 V lines must not be installed together in a flush-mounted socket!

6.2 Requirements for the electrician



Warning

Electric voltage!

Install the device only if you have the necessary electrical engineering knowledge and experience.

- Incorrect installation endangers your life and that of the user of the electrical system.
- Incorrect installation can cause serious damage to property, e.g. due to fire.

The minimum necessary expert knowledge and requirements for the installation are as follows:

- Apply the "five safety rules" (DIN VDE 0105, EN 50110):
 1. Disconnect from power;
 2. Secure against being re-connected;
 3. Ensure there is no voltage;
 4. Connect to earth and short-circuit;
 5. Cover or barricade adjacent live parts.
- Use suitable personal protective clothing.
- Use only suitable tools and measuring devices.
- Check the supply network type (TN system, IT system, TT system) to secure the following power supply conditions (classic connection to ground, protective earthing, necessary additional measures, etc.).

6.3 Connection

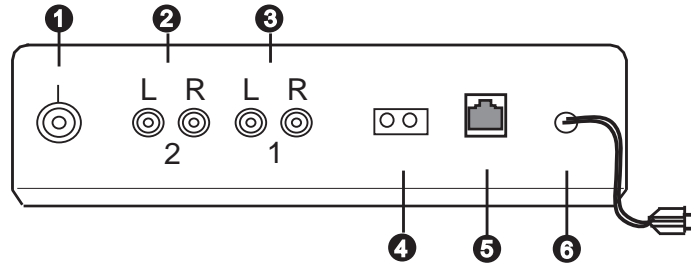


Fig. 2: Rear

Connections

No.	Function
1	Antenna connection for IEC antenna connector
2	AUX 2: Cinch connector for external devices such as CD player, etc.
3	AUX 1: Cinch connector for external devices such as CD player, etc.
4	Floating extension unit input: for central STANDBY circuit
5	Audio bus: RJ 45 connecting cable (included, ca. 3 m)
6	Mains supply, 230 V: with connecting cable

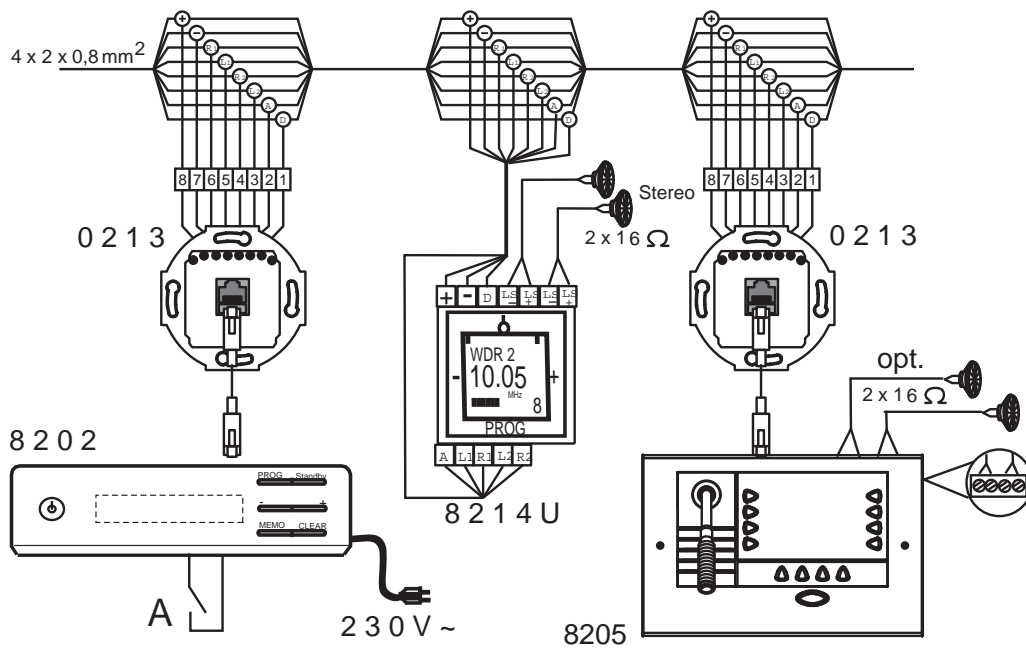


Fig. 3: System diagram for selective call

No.	Function
A	Floating contact (switch/push-button) *= When "External loudspeakers" are connected the internal loudspeaker is switched off

7 Mounting / Installation



Warning

Electric voltage!

Risk of death due to electrical voltage of 230 V during short-circuit in the low-voltage line.

- Low-voltage and 230 V lines must not be installed together in a flush-mounted socket!

7.1 Requirements for the electrician



Warning

Electric voltage!

Install the device only if you have the necessary electrical engineering knowledge and experience.

- Incorrect installation endangers your life and that of the user of the electrical system.
- Incorrect installation can cause serious damage to property, e.g. due to fire.

The minimum necessary expert knowledge and requirements for the installation are as follows:

- Apply the "five safety rules" (DIN VDE 0105, EN 50110):
 1. Disconnect from power;
 2. Secure against being re-connected;
 3. Ensure there is no voltage;
 4. Connect to earth and short-circuit;
 5. Cover or barricade adjacent live parts.
- Use suitable personal protective clothing.
- Use only suitable tools and measuring devices.
- Check the supply network type (TN system, IT system, TT system) to secure the following power supply conditions (classic connection to ground, protective earthing, necessary additional measures, etc.).

The flush-mounted insert must only be installed in flush-mounted wall boxes according to DIN 49073-1, Part 1, or suitable surface-mounted housings.

7.2 General mounting instructions

- Terminate all branches of the wiring system via a connected bus device (e.g., indoor station, outdoor station, system device).
- Do not install the system controller directly next to the bell transformer and other power supplies (to avoid interference).
- Do not install the lines of the system bus together with 230 V- lines.
- Do not use common cables for the connecting wires of the door openers and wires of the system bus.
- Avoid bridges between different cable types.
- Use only two wires for the system bus in a four-core or multi-core cable.
- When looping, never install the incoming and outgoing bus inside the same cable.
- Never install the internal and external bus inside the same cable.

8 Cleaning

Dirty units can be cleaned with a dry cloth. If this is not sufficient, a cloth slightly moistened with a soap solution can be used. Caustic cleaning agents or solvents must not be used.

A member of the ABB Group

Busch-Jaeger Elektro GmbH

PO box
58505 Lüdenscheid

Freisenbergstraße 2
58513 Lüdenscheid
Germany

www.BUSCH-JAEGER.com

info.bje@de.abb.com

Central sales service:

Phone: +49 (0) 2351 956-1600

Fax: +49 (0) 2351 956-1700

Notice

We reserve the right to at all times make technical changes as well as changes to the contents of this document without prior notice.

The detailed specifications agreed to at the time of ordering apply to all orders. ABB accepts no responsibility for possible errors or incompleteness in this document.

We reserve all rights to this document and the topics and illustrations contained therein. The document and its contents, or extracts thereof, must not be reproduced, transmitted or reused by third parties without prior written consent by ABB.

Copyright© 2012 Busch-Jaeger Elektro GmbH
All rights reserved