

ROBOTICS

OptiFact™

Collect, manage, and analyze data in production facilities all from one place



Unlocking the full potential of your production data

Optifact can connect to many devices in the factory including ABB robots. There is no need for permanent connectivity or sending your data externally, meaning users have full control over their digital setup.

Users can send the right information to the right person by visualizing information in dashboards

to analyze overall equipment efficiency, machine availability, cycle times and more.

You can build your own dashboard and organize data with our labelling and modelling tools to better display information based on your specific needs and production processes.

Benefits



Collect data from **hundreds** of factory devices to determine key indicators such as cycle time accelerating productivity gains



Analyze your data within **3 clicks** through a selection of ready-made dashboards or designing your own



Increase the production time by **up to 20%** by limiting the number of errors in your factory



Improve decision making in the factory by tracking KPIs and avoiding major breakdowns



Make sense out of your data with the Data Manager and unlock up to **25%** of your most valuable experts' time

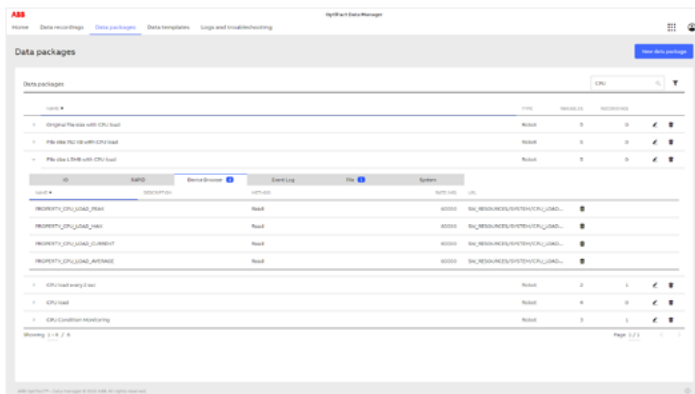
Installation and usage minimal requirements

Minimum Server Requirements (edge device or virtual machine)	Connectivity requirements
4 vCPU intel Xeon	
16 GB+ RAM	OPC-UA (for factory devices) – up to 20 000 signals per minute
100Gb at root partition	MQTT (for factory devices) – up to 20 000 signals per minute
500 Gb total data disk	RobAPI or RWS (for ABB robots)
TPM 2.0 available	OPC-UA (for factory devices)
Ubuntu Server 18.04 TLS or 20.04	MQTT (for factory devices)
Installed via executable installer on Ubuntu Linux distribution	

Network requirements

FQDN (* = wildcard)	Outbound TCP Ports	Usage
mcr.microsoft.com	443	Microsoft Container Registry
global.azure-devices-provisioning.net	443	Device Provisioning Service access
*.azurecr.io	443	Personal and third-party container registries
*.blob.core.windows.net	5671, 8883, 443 ¹	Download Azure Container Registry image deltas from blob storage
*.azure-devices.net	443	IoT Hub access
packages.microsoft.com	443	APT packages install/update
Outbound traffic open on port 443	443	License activation and renewals Product updates and security patches Support on demand connectivity

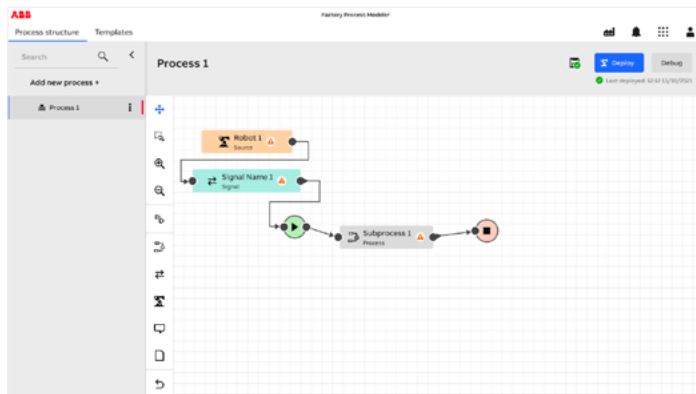
¹ Open port 8883 for secure MQTT or port 5671 for secure AMQP. If you can only make connections via port 443 then either of these protocols can be run through a WebSocket tunnel.



Data Manager

Manage what data to collect and store it wherever you like.

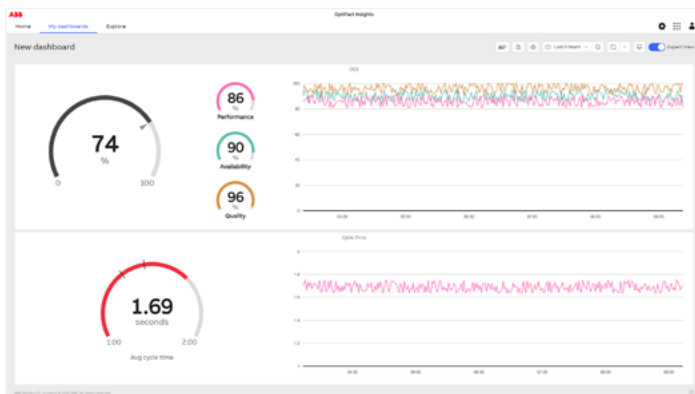
- Simplifying & speeding up data collection,
- Organizing data collection from multiple devices & protocols from a single app,
- Connecting to multiple OT/IT protocols,
- Your data, your choice of where to store and how to share data.



Process Modeler

Set up your Factory processes and see where issues are coming from.

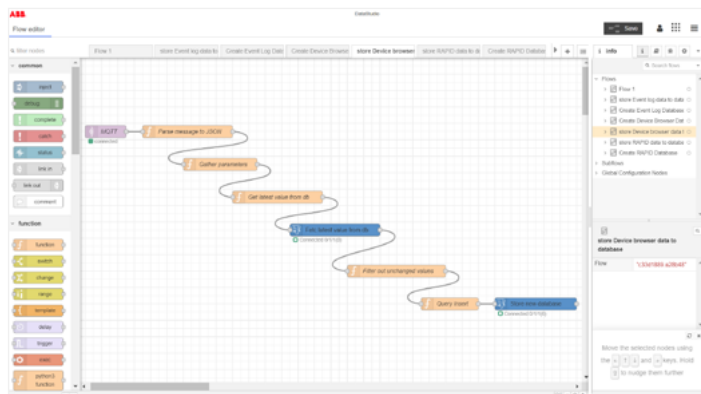
- Understand what happened during a specific time, where, when and how did the deviations affect the production,
- Digitally model the processes in an easy-to-use interface
- Visualize detailed info of your processes with Widgets in Insights



Insights

Visualize data from chosen cells or the entire production.

- View the full picture of how your operations are performing, from a specific cell to the entire factory.
- Utilize pre-made dashboards or design your own with SQL programming.
- Show the right information to the right group of users in a simple way.



Data Studio

Create, modify and adjust your own data flows.

- Create customized data flows and be able to visualize specific KPIs in Insights.
- Quickly setup and adjust your data flows.
- Based on Node-RED programming tool.

We reserve the right to make technical changes or modify the contents of this document without prior notice. With regard to purchase orders, the agreed particulars shall prevail. ABB AG does not accept any responsibility whatsoever for potential errors or possible lack of information in this document.

We reserve all rights in this document and in the subject matter and illustrations contained therein. Any reproduction, disclosure to third parties or utilization of its contents – in whole or in parts – is forbidden without prior written consent of ABB AG. Copyright © 2017 ABB All rights reserved