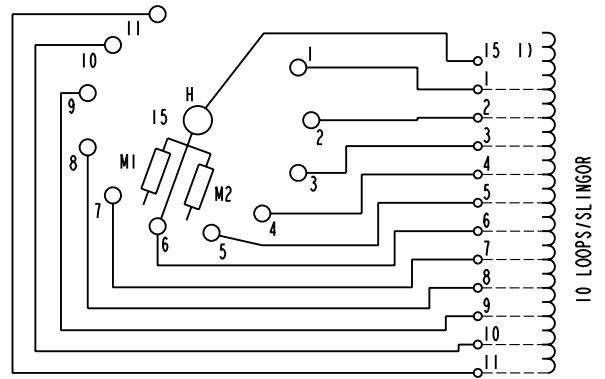


We reserve all rights in this document and in the information contained therein. Reproduction, use or disclosure to third parties without express authority is strictly forbidden. © ABB 19

Pos. Läge	H connects H förbinder
1	1 - 15
2	2 - 15
3	3 - 15
4	4 - 15
5	5 - 15
6	6 - 15
7	7 - 15
8	8 - 15
9	9 - 15
10	10 - 15
11	11 - 15

On-load tap-changer type UZEL., UZFL., 11 tap positions, linear switching.
Min. effective No. of turns in pos. 1.
The tap-changer is delivered set in pos. 6.

Lindningskopplare typ UZEL., UZFL., 11 lägen, linjär koppling.
Min. antal effektiva varv i läge 1.
Lindningskopplaren levereras inställd i läge 6.



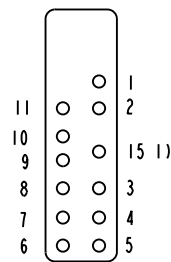
The tap-changer is shown in pos. 6
Lindningskopplaren visad i läge 6

H Main contact M1, M2 Transition contacts
Huvudkontakt Motståndskontakter

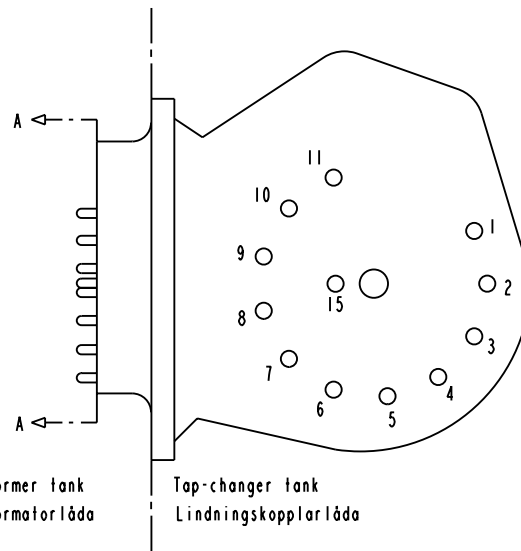
1) Connections between the terminals 15 of the three phases are included in the star-point type.

Förbindningar mellan uttag 15 i de tre faserna ingår i nollpunktsutförandet.

Terminal board
Plint



Section A-A
Sektion A-A



Sheet	Cont	Year	Week	Appd	Year	Week		
Rev Ind	Revision	Accepted by	prod by					
R. Yngvesson				Description (English)		DATA ORIGINAL		
Design checked by		Drawn by		Description (own language)		File name		
B-O. Stenestam		L. Bergman		KOPPLINGSSCHEMA		0396-7		
Drawing checked by		Issued by		Dept		Year		Week
M. Hedlund		COM/TKO		97		33		
Lang		Sheet		Rev Ind		Cont		
-		1		-		-		
Drawn by		Form No.		Design checked by		5492 0396-7		
ABB		Asea Brown Boveri						