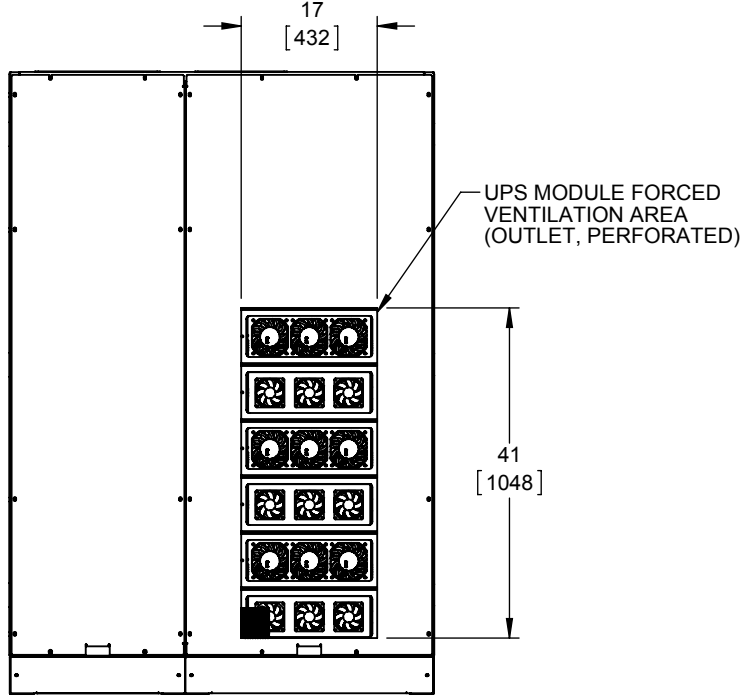
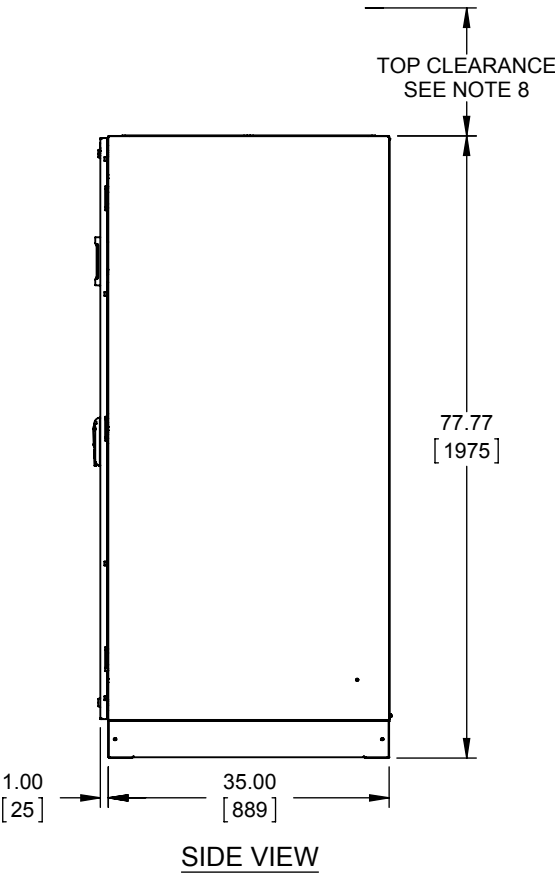
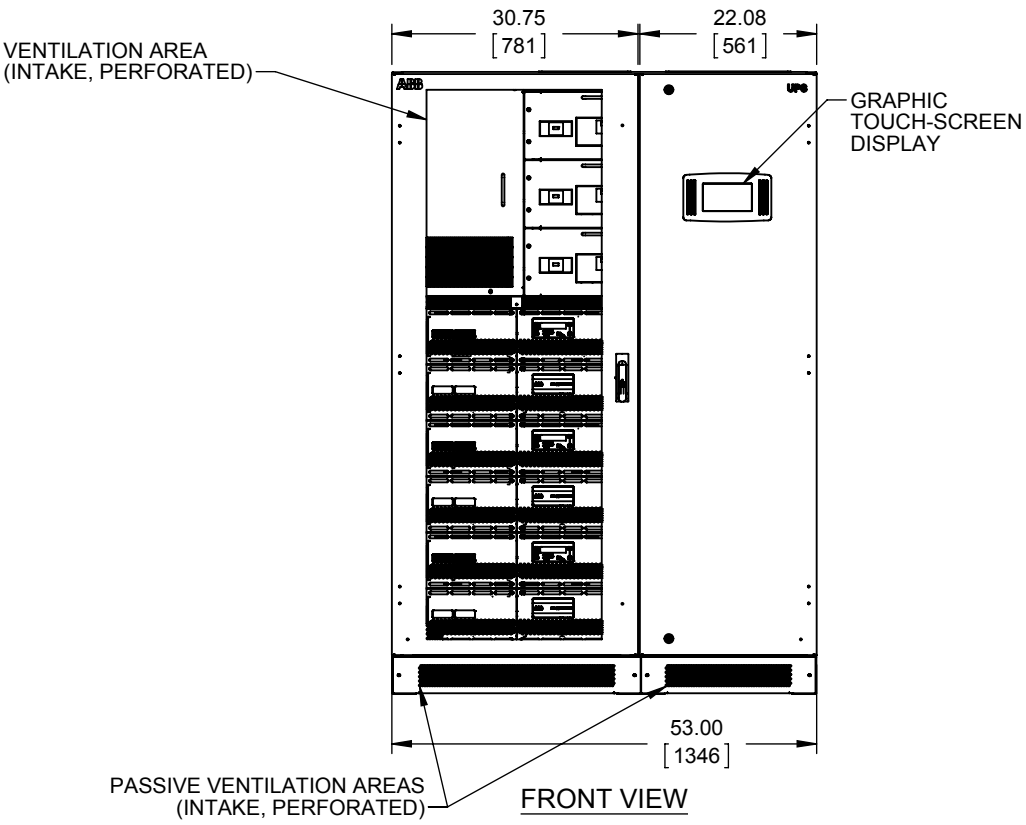
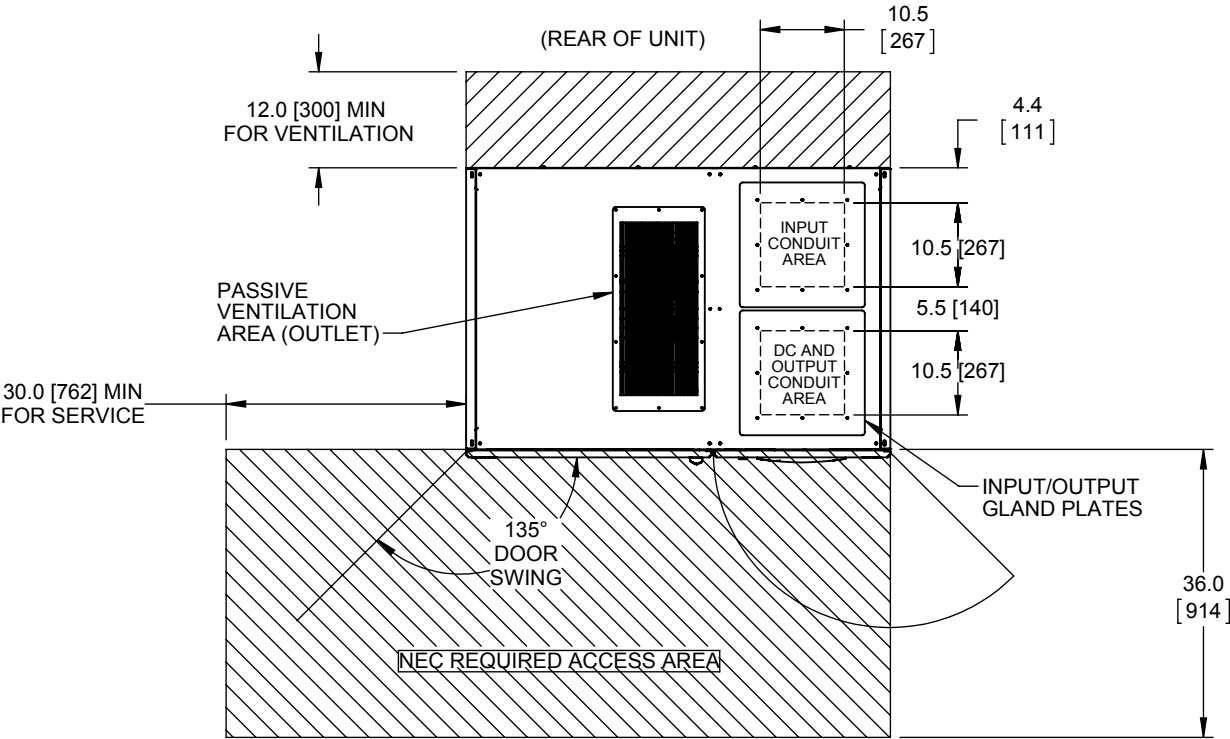


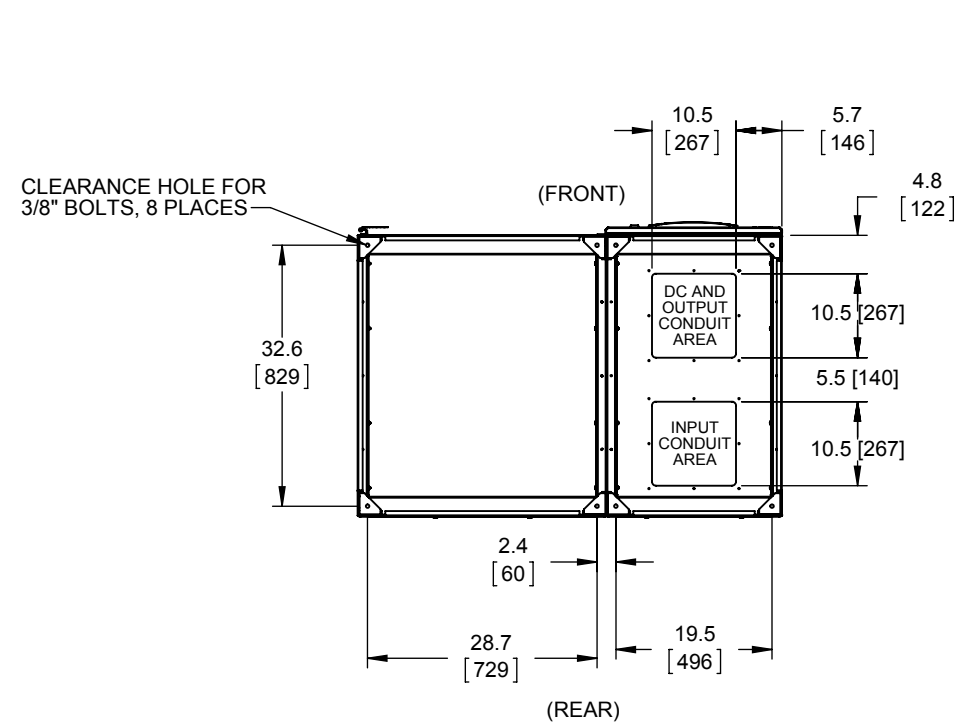
We reserve all rights in this document and in the information contained therein. Reproduction, use or disclosure to third parties without express authority is strictly forbidden. © Copyright 2014 ABB.



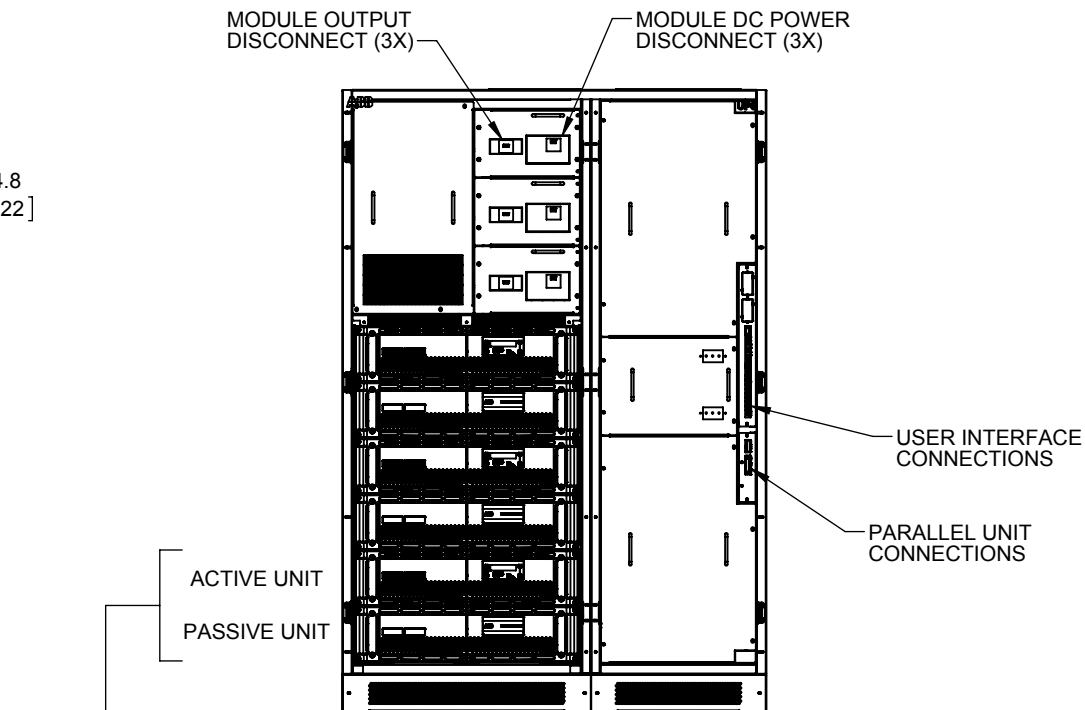
- NOTES:
1. INSTALLATION SHALL COMPLY WITH ALL APPLICABLE NATIONAL, STATE, AND LOCAL CODES.
 2. REFER TO PRODUCT DOCUMENTATION FOR ADDITIONAL DETAILS PRIOR TO SITE PREPARATION OR INSTALLATION.
 3. CABINET CONSTRUCTION: NEMA 1 (IP20) ENCLOSURE, 14 GA. STEEL FRAME, 16 GA. STEEL PANELS.
 4. FINISH: OUTER PANELS, POWDERCOAT, MIDNIGHT BLACK.
REAR AND INSIDE PANELS, GALVANIZED ZINC ELECTROPLATE.
 5. TOTAL WEIGHT: 1944 LB (881 kg).
 6. CABLE ENTRY TOP OR BOTTOM, AS CONFIGURED PER CUSTOMER SPECIFICATION (TOP ENTRY SHOWN).
 7. FRONT ACCESS ONLY FOR SERVICE AND MAINTENANCE.
 8. MINIMUM 16" [400mm] TOP CLEARANCE REQUIRED FOR VENTILATION, IF THERE IS NO SIDE ACCESS.
 9. DO NOT BLOCK VENTILATION AREAS.
 10. BUSBAR TERMINALS FURNISHED WITH NEMA 2-HOLE LANDINGS, 1.75" SPACING, 1/2-13 UNC THREAD. SEE SHEET 2 FOR DETAILS.
 11. DESIGNED FOR CABLE SIZES UP TO:
INPUT, OUTPUT: 3X 250 MCM
DC BATTERY: 4X 250 MCM
 12. OPERATING TEMPERATURE: 0 TO 40°C.

Material SEE NOTES	Finish POWDERCOAT- SEE NOTES	Prepared P. Diaz	Title MECHANICAL OUTLINE Conceptpower DPA 500, 300kVA Cabinet Modular UPS 480VAC, UL Listed		Units Inch	Sheet Size B	Scale 1:24	
Tolerances X.XX = ±.03 X.XXX = ±.015 Hole ∅ = ±.005 Angle = ±1/2°	Unless Otherwise Specified: Inside bend radius equals one material thickness. Remove all burrs and sharp edges.	Approved P. Diaz			Item ID 94-9200-00000097	Item Rev. A00	Date Drawn 11/08/2016	
	Part must comply with company document 94-10-000001. Interpret drawing in accordance with ASME Y14.5-2009.	Division/Dept. DMPC/Power Protection		Document Kind OutlineDrawing	Document ID 94-9200-00000097	Doc. Rev. A01	Page 1 / 2	

We reserve all rights in this document and in the information contained therein. Reproduction, use or disclosure to third parties without express authority is strictly forbidden. © Copyright 2014 ABB.



BOTTOM VIEW
FLOOR BRACING DETAIL
AND CONDUIT ENTRY



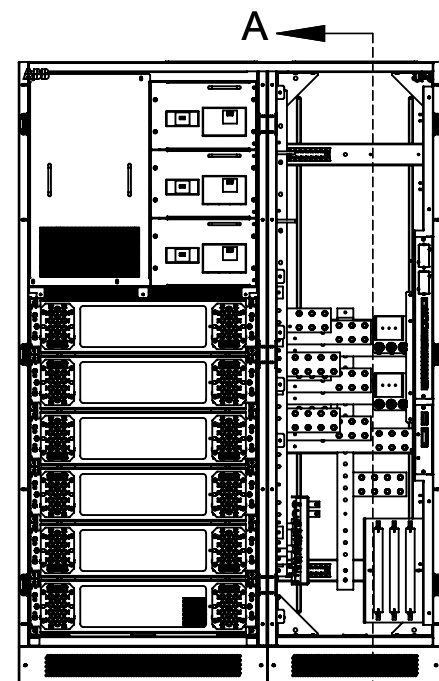
100 kVA UPS
MODULE SET (3X)

FRONT VIEW
DOORS REMOVED

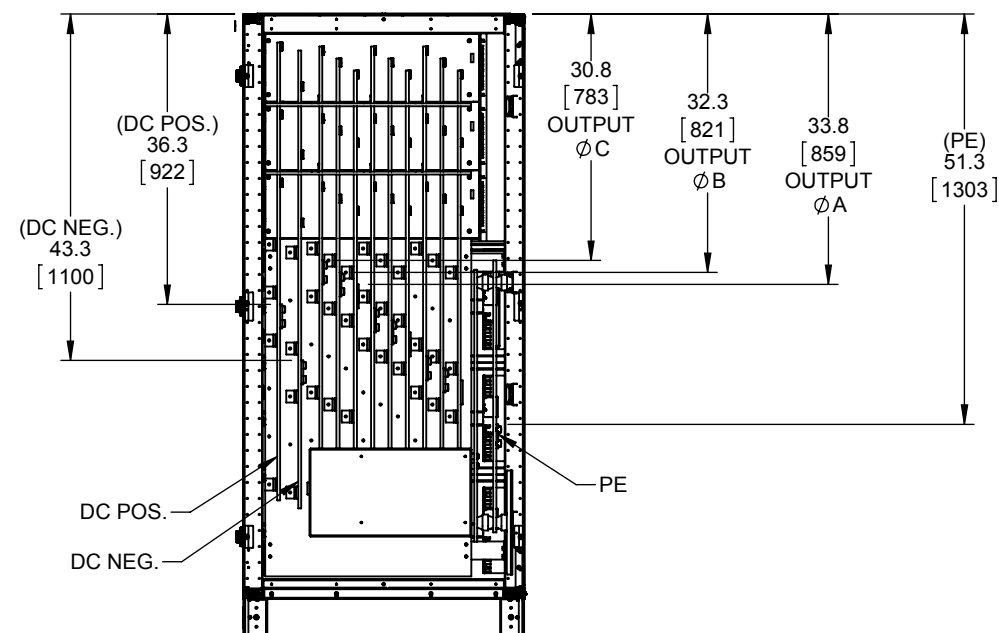
NOTES:

1. INSTALLATION SHALL COMPLY WITH ALL APPLICABLE NATIONAL, STATE, AND LOCAL CODES.
2. REFER TO PRODUCT DOCUMENTATION FOR ADDITIONAL DETAILS PRIOR TO SITE PREPARATION OR INSTALLATION.
3. BOTTOM FEED TERMINAL DISTANCES FROM BOTTOM PAN:

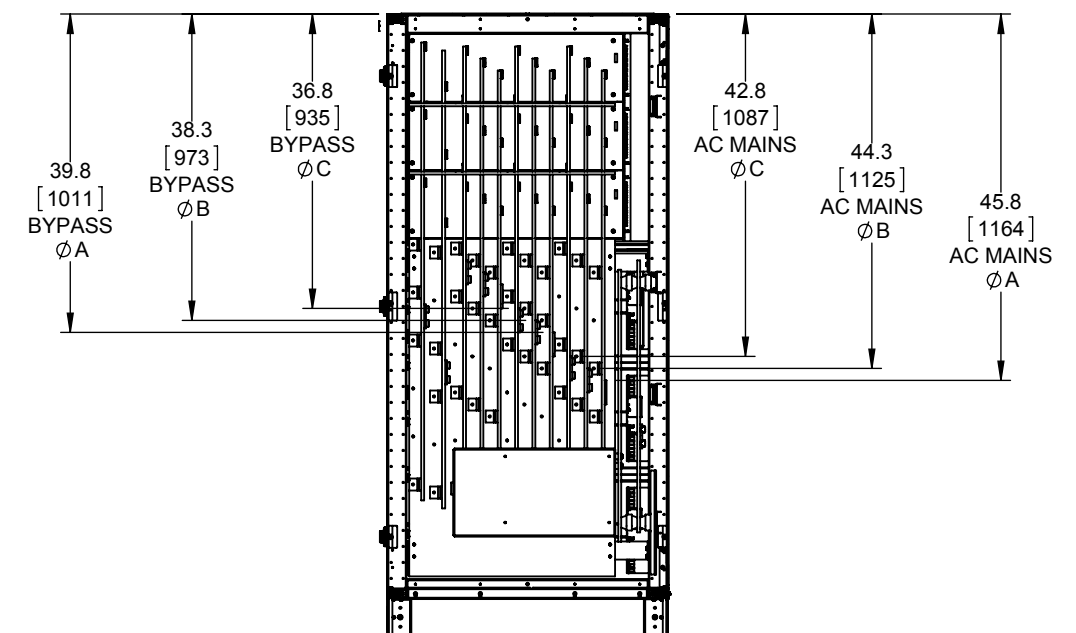
AC MAINS A	22.9 [583]
AC MAINS B	24.5 [621]
AC MAINS C	25.9 [659]
BYPASS A	16.9 [431]
BYPASS B	18.5 [469]
BYPASS C	19.9 [507]
OUTPUT A	10.9 [279]
OUTPUT B	12.5 [317]
OUTPUT C	13.9 [355]
PE	27.9 [710]
DC POS	20.5 [520]
DC NEG	25.5 [647]



FRONT VIEW
DEADFRONT PANELS
AND MODULE REMOVED



SECTION A-A
(TOP FEED EXAMPLE)
(SEE NOTE 3)



SECTION A-A
(TOP FEED EXAMPLE)
(SEE NOTE 3)