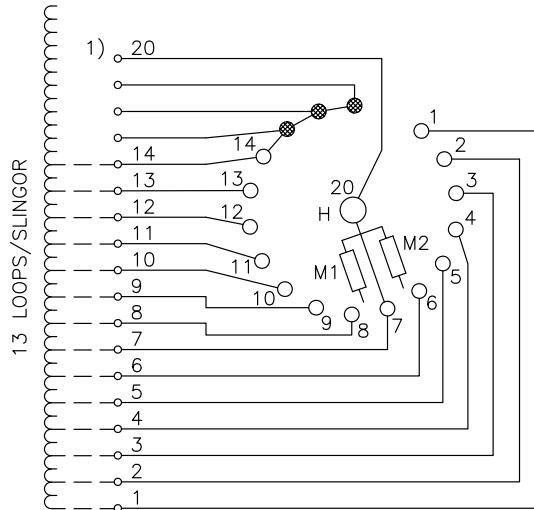


We reserve all rights in this document and in the information contained therein. Reproduction, use or disclosure to third parties without express authority is strictly forbidden.
© ABB 19

Pos. Läge	H connects H förbinder
1	1 - 20
2	2 - 20
3	3 - 20
4	4 - 20
5	5 - 20
6	6 - 20
7	7 - 20
8	8 - 20
9	9 - 20
10	10 - 20
11	11 - 20
12	12 - 20
13	13 - 20
14	14 - 20

On-load tap-changer type UZEL., UZFL., 14 tap positions, linear switching.
Max. effective No. of turns in pos. 1.
The tap-changer is delivered set in pos. 7.

Lindningskopplare typ UZEL., UZFL., 14 lägen, linjär koppling.
Max. antal effektiva varv i läge 1.
Lindningskopplaren levereras inställd i läge 7.



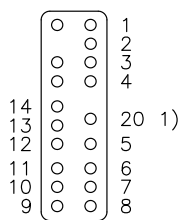
The tap-changer is shown in pos. 7
Lindningskopplaren visad i läge 7

H Main contact M1, M2 Transition contacts
Huvudkontakt Motståndskontakter

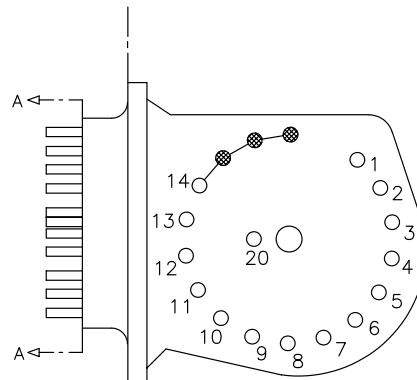
1) Connections between the terminals 20 of the three phases are included in the star-point type.

Förbindningar mellan uttag 20 i de tre faserna ingår i nollpunktsutförandet.

Terminal board
Plint



Section A-A
Sektion A-A



Transformer tank Tap-changer tank
Transformatorlåda Lindningskopplarlåda

Drawn by Design checked by	Sheet	Cont	Year	Week	Dept	1	Reissued	MISM	18	07	Description (English) CONNECTION DIAGRAM	DATAORIGINAL
	Year	Week	Rev Ind	Revision	Appd	Year	Week	Accepted by qual control R.Yngvesson	Accepted for prod by	Description (own language) KOPPLINGSSCHEMA		File name 0393-10
	Design checked by B-O.Stenestam	Drawn by L.Bergman	Issued by Dept COM/TKO	Year 97	Week 33	5492 0393-10		Lang	Sheet 1			
	Design checked by M.Hedlund	Issued by Dept COM/TKO	Year 97	Week 33	RevInd	Cont	-					
ABB Asea Brown Boveri												