



AUXILIARY SWITCH	
19 AUX. 11 "M"	20 AUX. 12 "M"
21 AUX. 11 "S"	22 AUX. 12 "S"
23 AUX. 11 COM	24 AUX. 12 COM
25 AUX. 9 "M"	26 AUX. 10 "M"
27 AUX. 9 "S"	28 AUX. 10 "S"
29 AUX. 9 COM	30 AUX. 10 COM
31 AUX. 7 "M"	32 AUX. 8 "M"
33 AUX. 7 "S"	34 AUX. 8 "S"
35 AUX. 7 COM	36 AUX. 8 COM
37 AUX. 1 COM	38 AUX. 2 COM
39 AUX. 5 "M"	40 AUX. 6 "M"
41 AUX. 5 "S"	42 AUX. 6 "S"
43 AUX. 5 COM	44 AUX. 6 COM
45 AUX. 3 "M"	46 AUX. 4 "M"
47 AUX. 3 "S"	48 AUX. 4 "S"
49 AUX. 3 COM	50 AUX. 4 COM
51 AUX. 1 "M"	52 AUX. 2 "M"
53 AUX. 1 "S"	54 AUX. 2 "S"
55 AUX. 1 COM	56 AUX. 2 COM

LEFT SIDE  
TERMINAL BLOCK LABEL  
BLOCK "A"

\*SCREW TERMINAL POSITION RELATIVE TO FRONT OF CIRCUIT BREAKER

INTERNAL WIRE HARNESS COLOR CODES:	
R=RED	P=PURPLE
W=WHITE	G=GREEN
Y=YELLOW	B=BLACK
N=BROWN	L=BLUE

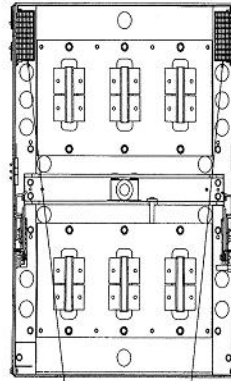
  

16 ELECT. OPER. S	16 ELECT. OPER. S
17 RMT. CHG. M	35 RMT. CHG. M
18 RMT. CLS. +	34 RMT. CLS. -
19 B.A. ONLY COM F	33 CHG. IND. S
20 B.A. ONLY NO. S	32 SHUNT TRIP N
21 B.A. ONLY N.C. S	31 SHUNT TRIP N
22 B.A. LOCKOUT COM N	30 O.V.R. N
23 B.A. LOCKOUT NO. N	29 O.V.R. N
24 B.A. LOCKOUT N.C. N	28
25	27
26 25I INPUT- M	26 25I INPUT- M
27 CONNECT- S	25 25I INPUT- S
28 CONNECT- T	24 25I OUTPUT- M
29 120 VOLTS DC+ S	23 25I OUTPUT+ S
30 48 V VOLTS N	22 DVO SWITCH N
31 48 V VOLTS L	21 DVO SWITCH L
32 240 VOLTS DC- S	20 + TOP S
33 240 VOLTS DC+ S	19 - COM N

RIGHT SIDE  
TERMINAL BLOCK LABEL  
BLOCK "B"

### WIRE CHART

NOTE: WIRE RANGE #18 THRU #12 SOLID OR 5 STRANDED COPPER WIRE. TORQUE: 9 LB-IN

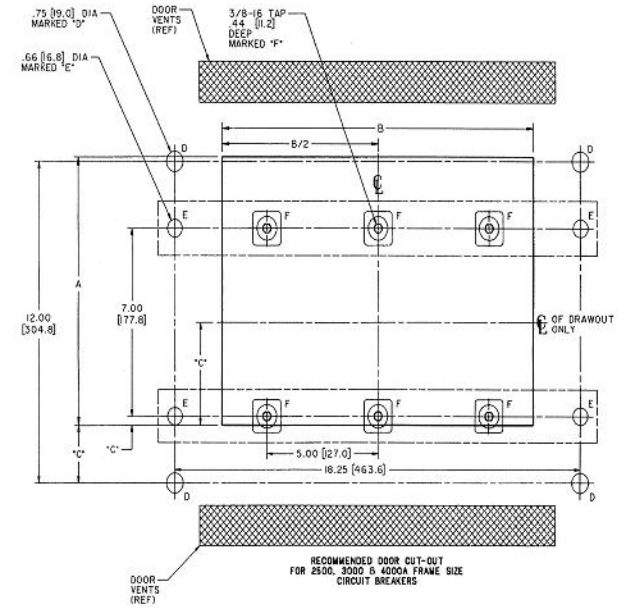


SECONDARY DISCONNECT PLUG (DEDICATED POSITIONS)

1	2	3	4	5	6	7	8	9	10	11	12	13	14	15	16	17	18	19	20	21	22	23	24	25	26	27	28	29	30	31	32	33	34	35
---	---	---	---	---	---	---	---	---	----	----	----	----	----	----	----	----	----	----	----	----	----	----	----	----	----	----	----	----	----	----	----	----	----	----

LEFT SIDE RIGHT SIDE

NOTE: ALL WIRES ON LEFT = AUX. SWITCH WIRES. ALL WIRES ON RIGHT = ALL OTHER WIRING. \*S CORRESPOND TO WIRE CHART I.E. #31, 32 RIGHT = SHUNT TRIP



FRAME RATING	BREAKER TYPE	WEIGHT		MINIMUM COMPARTMENT VOLUME	MINIMUM DOOR VENTILATION	STANDARD DOOR CUT-OUT			OPTIONAL DOOR CUT-OUT		
		BREAKER	DRAWOUT SUBSTRUCTURE			A	B	C	A	B	C
2500A	BACK CONNECTED	167 LBS [76KG] *	N/A	13,959 CU.IN. [229,600 CU.CM.]	160 SQ.IN. [1,032 SQ.CM.] TOTAL 80 SQ.IN. [516 SQ.CM.] TOP 80 SQ.IN. [516 SQ.CM.] BOTTOM	10	14	34	9.83	13.38	29.5
	FRONT CONNECTED	179 LBS [81KG] *				[254]	[356]	[6.6]	[249.7]	[339.9]	[6.4]
3000A	BACK CONNECTED	266 LBS [98.3KG] *	N/A	20,832 CU.IN. [341,375 CU.CM.]	270 SQ.IN. [1,742 SQ.CM.] TOTAL 135 SQ.IN. [871 SQ.CM.] TOP 135 SQ.IN. [871 SQ.CM.] BOTTOM	TRIM PLATE REQUIRED			FLUSH FRONT OR NON-HINGED DOOR CONSTRUCTION- TRIM PLATE MAY BE OMITTED		
	FRONT CONNECTED	179 LBS [81.4KG] *				25.143 CU.IN. [412,020 CU.CM.]	270 SQ.IN. [1,742 SQ.CM.] TOTAL 135 SQ.IN. [871 SQ.CM.] TOP 135 SQ.IN. [871 SQ.CM.] BOTTOM	2.17	3.64	2.255	[57.28]
4000A	FRONT CONNECTED	320 LBS [145.6KG] *	N/A	25,143 CU.IN. [412,020 CU.CM.]	246 SQ.IN. [1,587 SQ.CM.] TOTAL 123 SQ.IN. [793.5 SQ.CM.] TOP 123 SQ.IN. [793.5 SQ.CM.] BOTTOM	10	14	3.64	9.83	13.38	3.755
	FRONT CONNECTED	167 LBS [76KG] *				[254]	[356]	[97.5]	[249.7]	[339.9]	[95.38]
2500A	DRAWOUT MOUNTED	232 LBS [105.6KG] *	111 LBS [50.5KG]	10,991 CU.IN. [180,109 CU.CM.]	246 SQ.IN. [1,587 SQ.CM.] TOTAL 123 SQ.IN. [793.5 SQ.CM.] TOP 123 SQ.IN. [793.5 SQ.CM.] BOTTOM	TRIM PLATE REQUIRED			FLUSH FRONT OR NON-HINGED DOOR CONSTRUCTION- TRIM PLATE MAY BE OMITTED		
	DRAWOUT MOUNTED	233 LBS [106KG] *	111 LBS [50.5KG]	10,991 CU.IN. [180,109 CU.CM.]	246 SQ.IN. [1,587 SQ.CM.] TOTAL 123 SQ.IN. [793.5 SQ.CM.] TOP 123 SQ.IN. [793.5 SQ.CM.] BOTTOM	TRIM PLATE REQUIRED			FLUSH FRONT OR NON-HINGED DOOR CONSTRUCTION- TRIM PLATE MAY BE OMITTED		
3000A	DRAWOUT MOUNTED	295 LBS [134.2KG] *	167 LBS [76KG] *	15,136 CU.IN. [248,074 CU.CM.]	246 SQ.IN. [1,587 SQ.CM.] TOTAL 123 SQ.IN. [793.5 SQ.CM.] TOP 123 SQ.IN. [793.5 SQ.CM.] BOTTOM	TRIM PLATE REQUIRED			FLUSH FRONT OR NON-HINGED DOOR CONSTRUCTION- TRIM PLATE MAY BE OMITTED		
	DRAWOUT MOUNTED	295 LBS [134.2KG] *	167 LBS [76KG] *	15,136 CU.IN. [248,074 CU.CM.]	246 SQ.IN. [1,587 SQ.CM.] TOTAL 123 SQ.IN. [793.5 SQ.CM.] TOP 123 SQ.IN. [793.5 SQ.CM.] BOTTOM	TRIM PLATE REQUIRED			FLUSH FRONT OR NON-HINGED DOOR CONSTRUCTION- TRIM PLATE MAY BE OMITTED		

TABLE 1

N/A = NOT APPLICABLE  
\* ADD 9 LBS [4.1KG] FOR ELECTRICAL OPERATOR

### NOTES:

- SEE OUTLINE DRAWING 10055629SH7.
- SEE 10054370SH6 FOR MECHANICAL ACCESSORY INFORMATION.
- 'F' DIA. = 2500A & 3000A BACK CONNECTED BREAKER MOUNTING INSERTS.
- 'E' DIA. = 2500A & 3000A FRONT CONNECTED BREAKER MOUNTING HOLES.
- 'D' DIA. = 4000AMP FRONT CONNECTED BREAKER MOUNTING HOLES.
- BUSBARS OR CABLES SHOULD BE SIZED PER UL89I DEAD-FRONT SWITCHBOARDS STANDARD
- DIMENSIONS IN BRACKETS ARE [METRIC].

## Industrial Solutions

by ABB

### POWER BREAK II

#### CIRCUIT BREAKER WEIGHTS & VENTS INFO

THIRD ANGLE	SHEET#	DWG. NO.	DATE	REV
	13 of 19	GEM3025	09/19	02