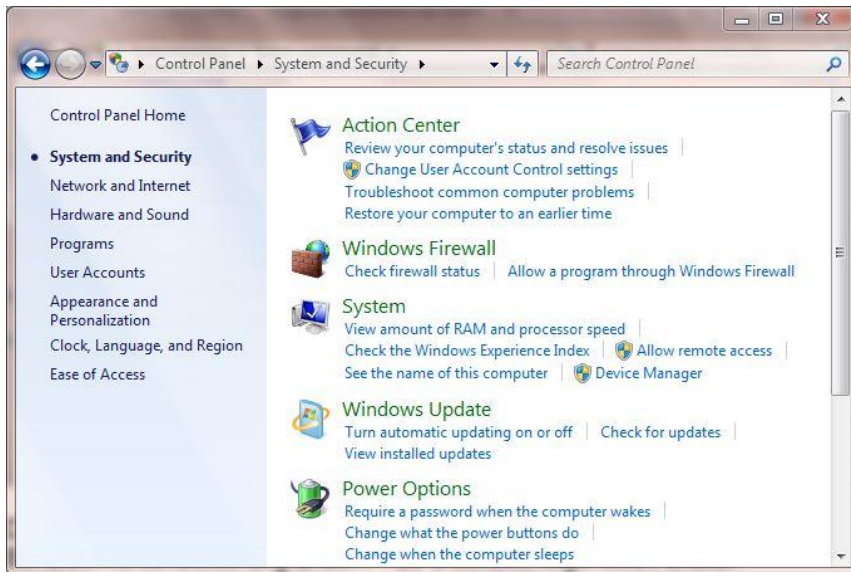


Installing the driver for the plotter AMS 500, AMS 250, or AMS 250 Basic within Windows 7

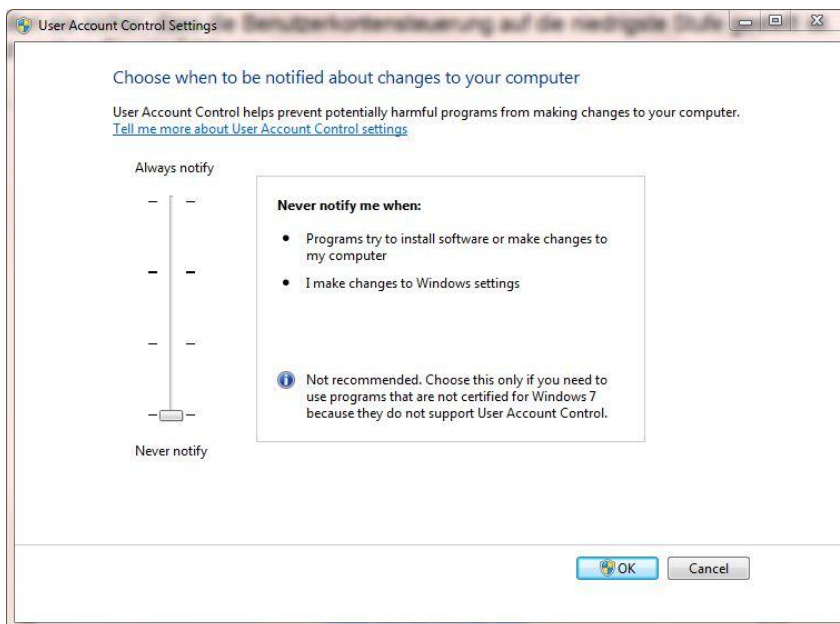
Important! DO NOT connect the output device to the PC UNTIL the drivers are installed!
(If you have already done so, please follow the instructions of this document starting from step 8.)

1. Login into your Computer using an account with administrative rights.
2. Set the User Account Control to the lowest level. Here is how to do it:

2.1. Navigate to **Start > Control Panel > System and Security**



Under the header “**Action Center**” click on “**Change User Account Control settings**”.
The following window appears:



- 2.2. Remember the position of the slide control, in order to restore it later.
- 2.3. Shift the control to the lowest position “**Never notify**” and confirm with „**OK**“. After the change, the computer must be restarted.

3. In order to continue, you need to know if you are running the 32-bit version or the 64-bit version of Windows 7 on your computer. If you are not sure, you can open the following window:

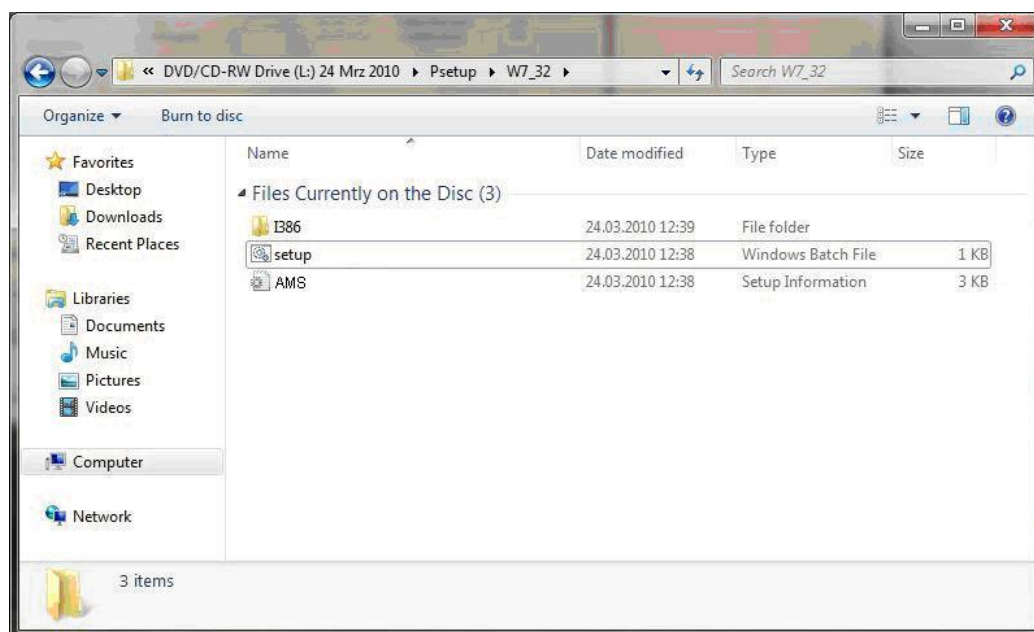
Start > Control Panel > System and Security > System



Within the line “**System type**” you can find the information needed.

4. Open the folder **Psetup** on your installation CD, and from there, open the subfolder “**W7_32**” (for the 32-Bit version of Windows 7) or “**W7_64**” (for the 64-Bit version of Windows 7)

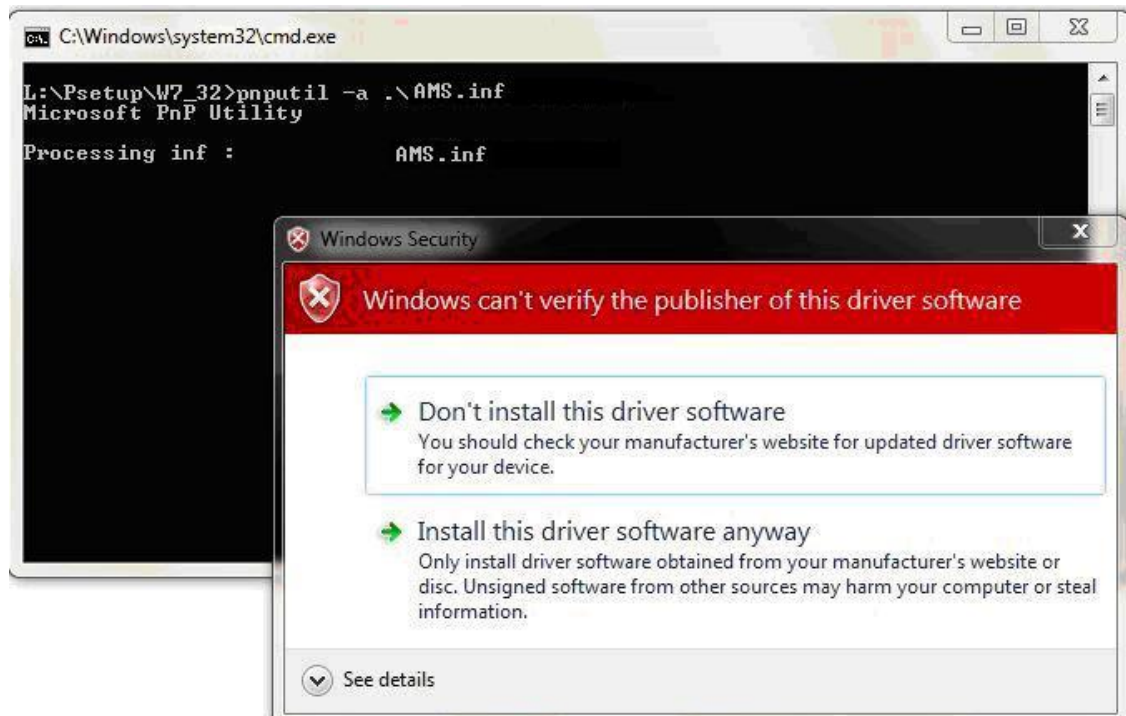
Be sure to choose the correct version!.



Start the Windows batch File “**setup**” with a double click on the symbol.

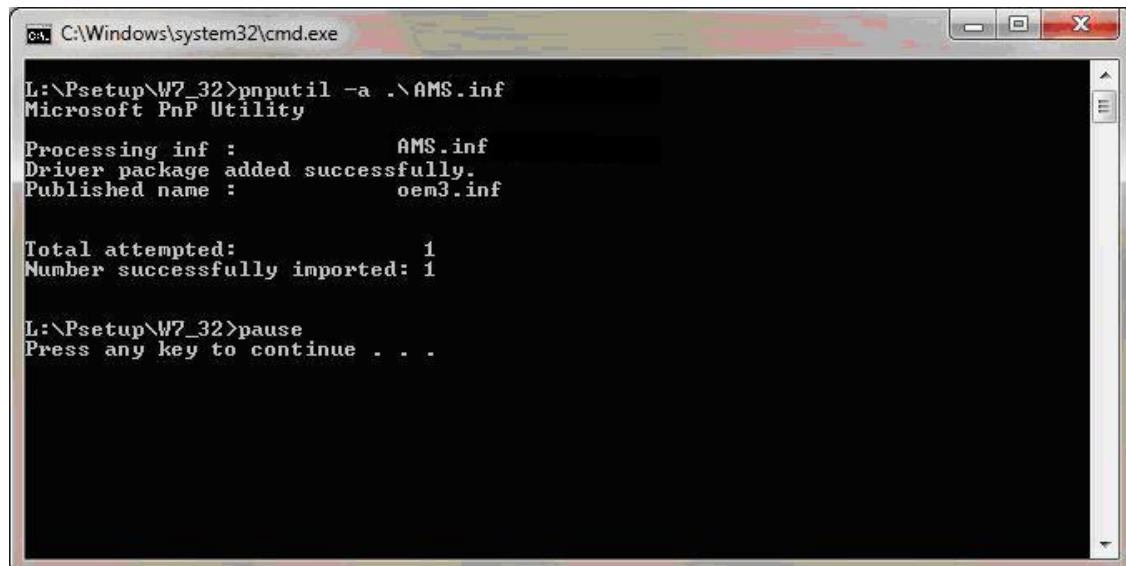
5. During installation, a command-line window appears. Also, following message window pops up:

“Windows can't verify the publisher of this driver software”



Choose **“Install the driver software anyway”**

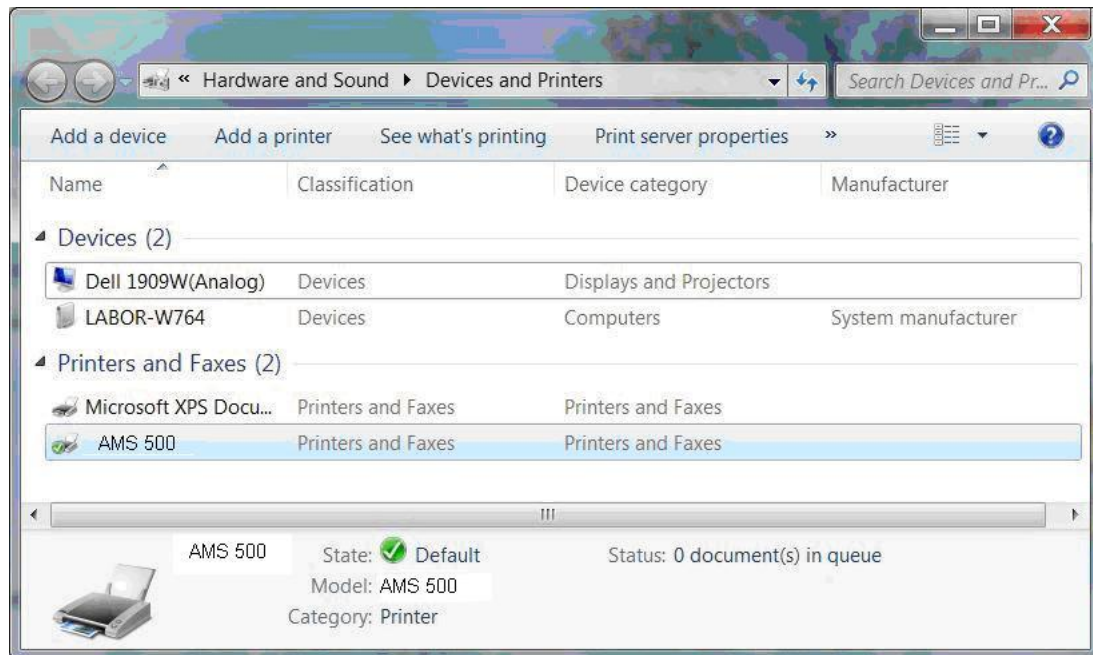
6. The Installation can take about one minute. After a successful installation the command-line window issues the following message (the text may differ slightly, depending on your Windows 7 version):



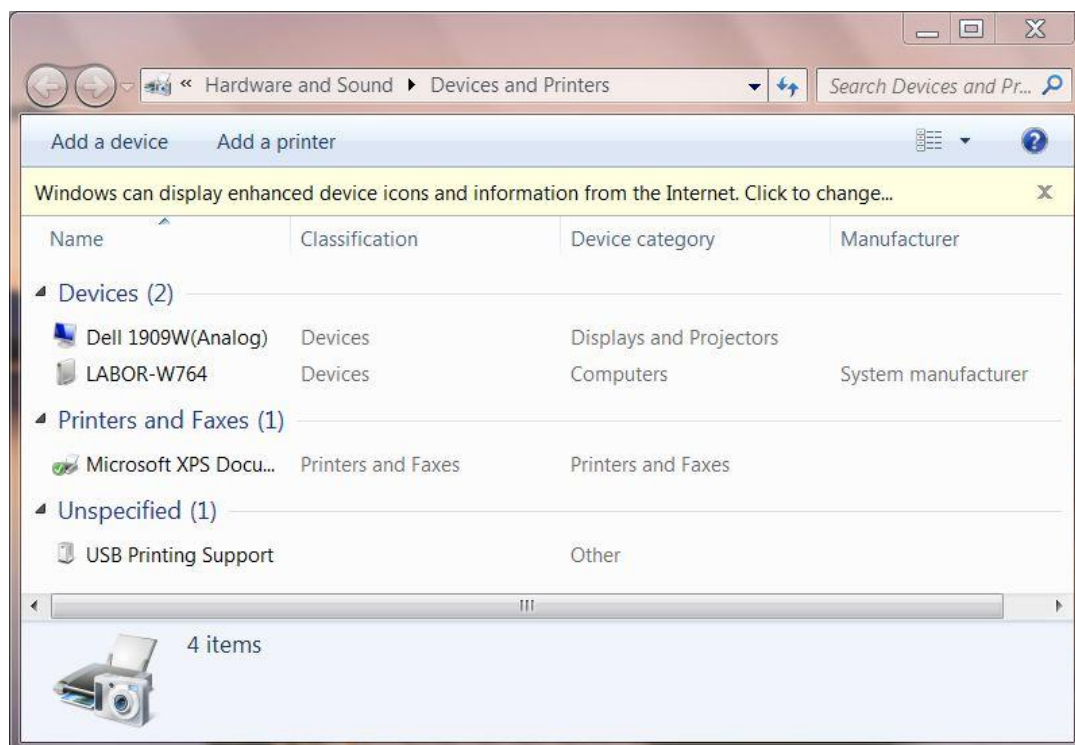
Close the command-line window.

7. Change User Account Control settings to its original value (see step 2) and restart the system.

8. Now connect your AMS 500, AMS 250, or AMS 250 Basic plotter/engraver to the system and switch on the power. Go to “**Start > Devices and Printers**”. If the installation was successful, you will find your plotter in the list of Printers and Faxes. The installation is completed.



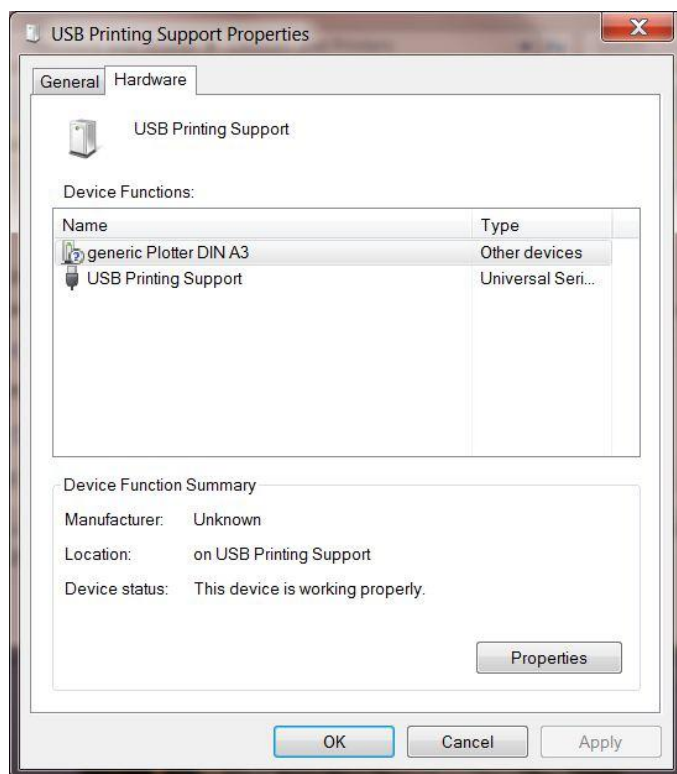
If the installation was **NOT** successful, then an entry “**USB- Printing Support**” appears in the list.



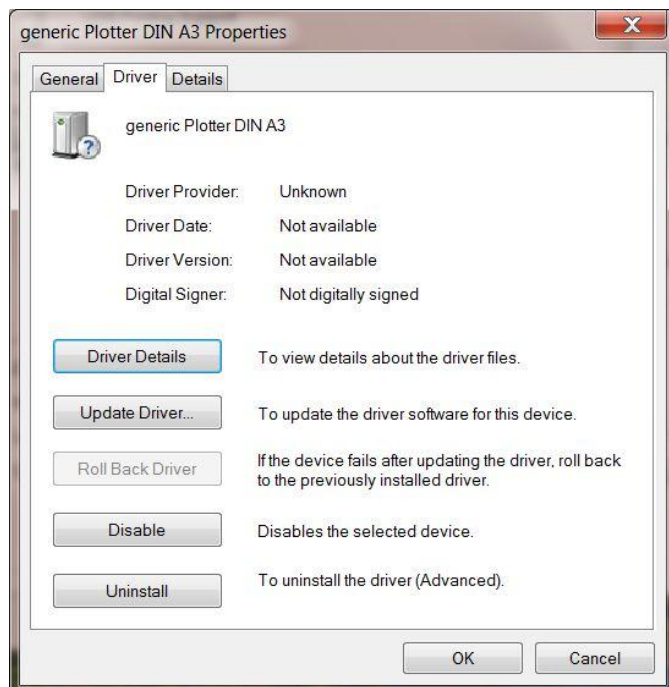
In this case, take the following steps:

Double-Click on the entry “**USB Printing Support**”.

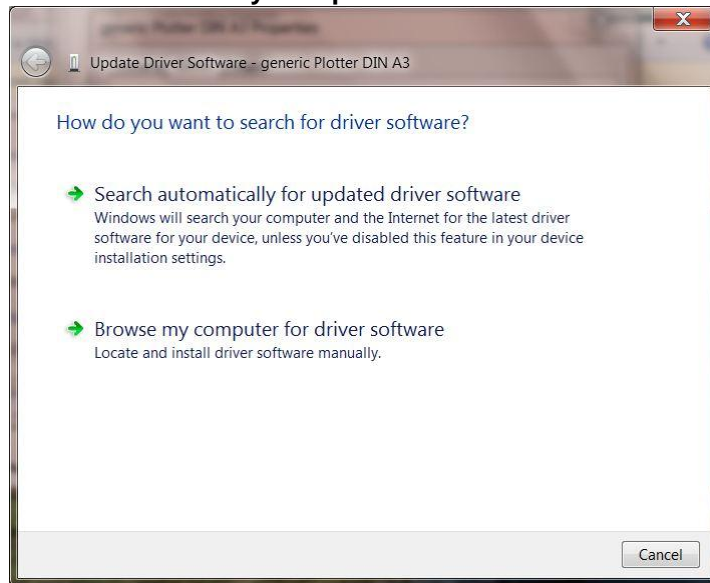
9. In the new window that appears, choose the tab “**Hardware**”.



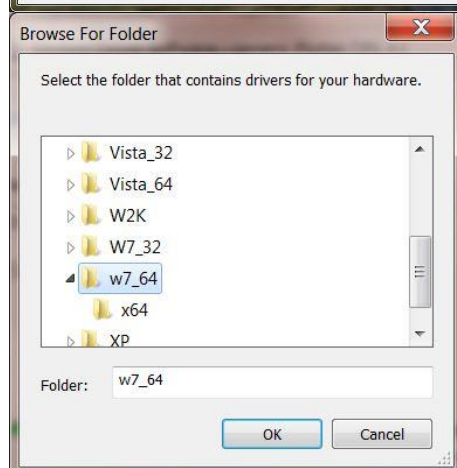
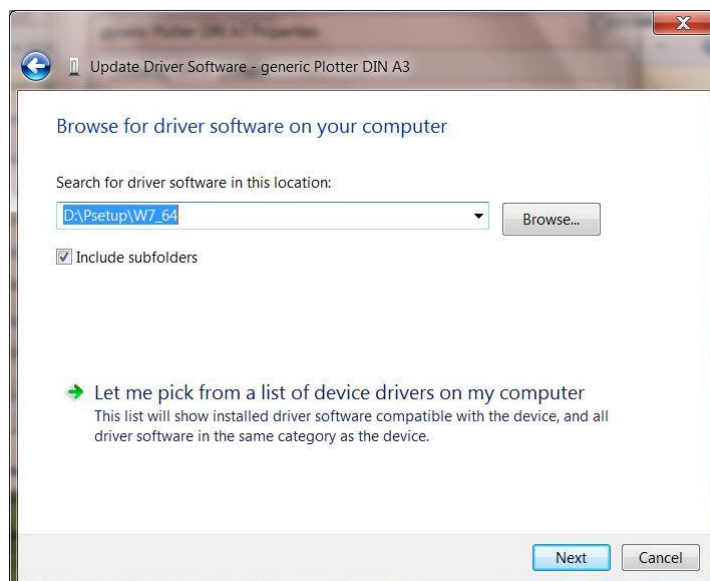
10. Double-click on the entry “**generic Plotter...**” in the “**Device Functions**” list. Choose the tab “**Driver**” in the next window.



11. Click on the button “**Update Driver...**”. The following window appears. Choose “**Browse my Computer for driver software**”.

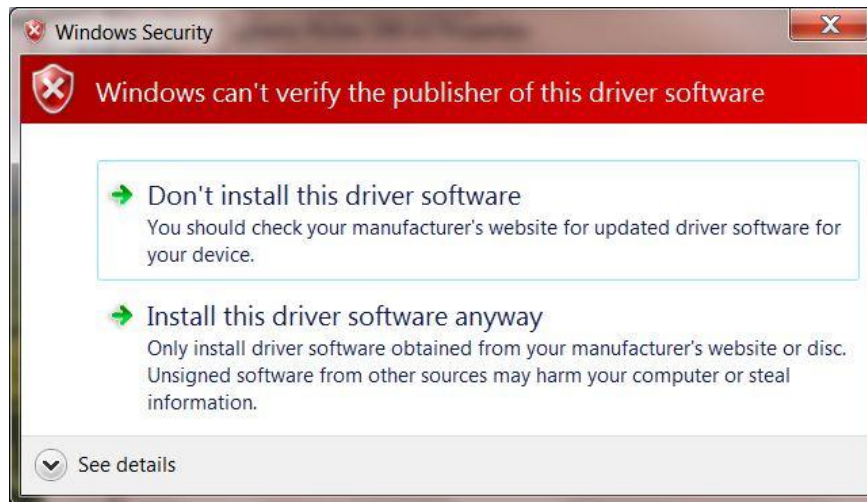


12. Click on “**Browse**” and select the path **Psetup\W7_32** or **Psetup\w7_64** on your installation CD, depending whether you have a 32-Bit or 64-Bit version of Windows 7 (Refer to step 3 of this document to if you do not know the version you have).



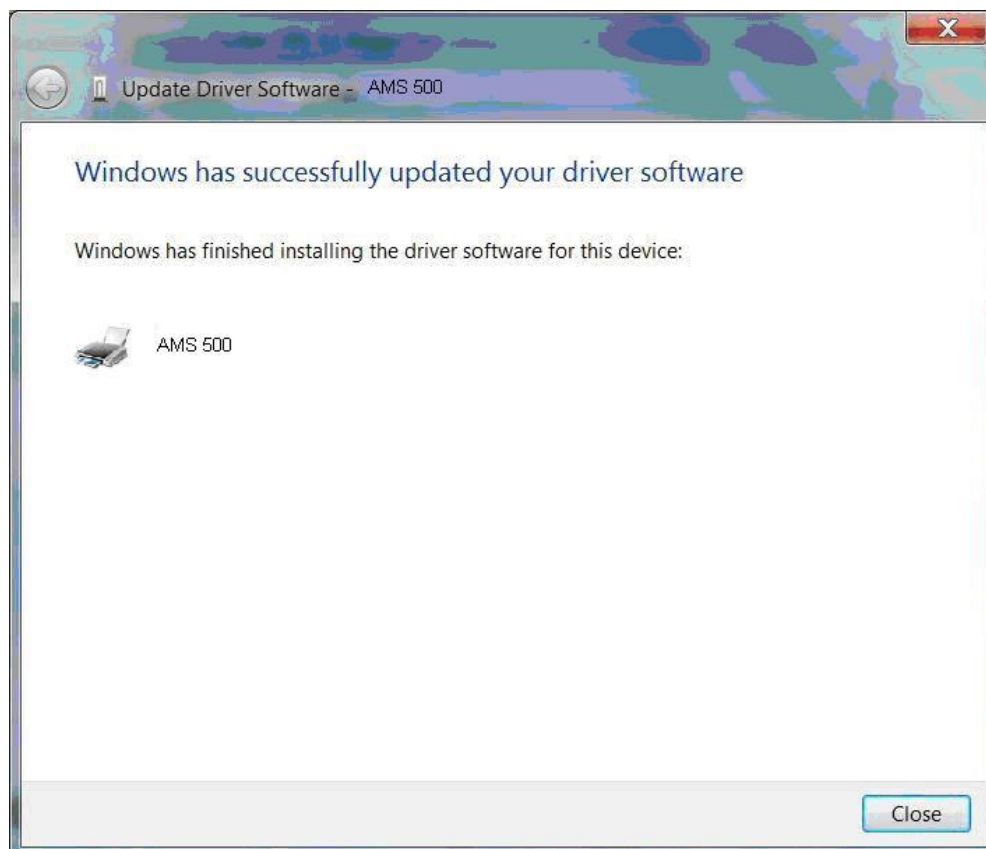
13. Confirm with “**OK**” and then “**Next**”. The installation starts now.

14. During the installation the following message appears:
“Windows can't verify the publisher of this driver software”:



Choose **“Install the driver software anyway”**.

15. After a successful installation Windows issues the following message.
Press **“Close”** to complete the installation.



16. Reopen the window **“Devices and Printers”**. Your plotter should now appear in the list of Printers and Faxes.

