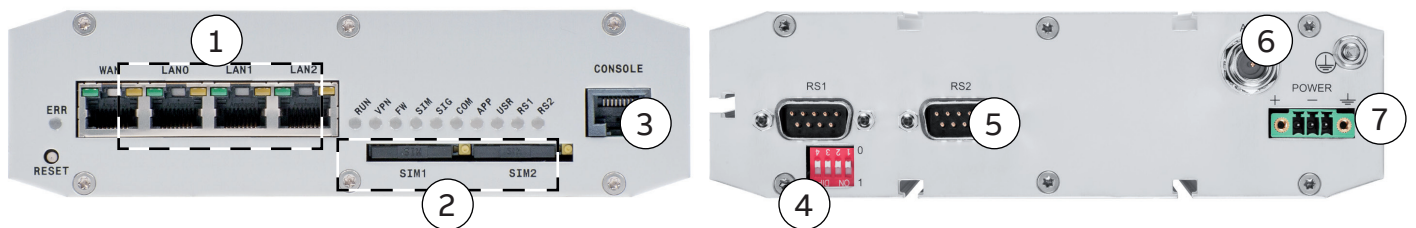
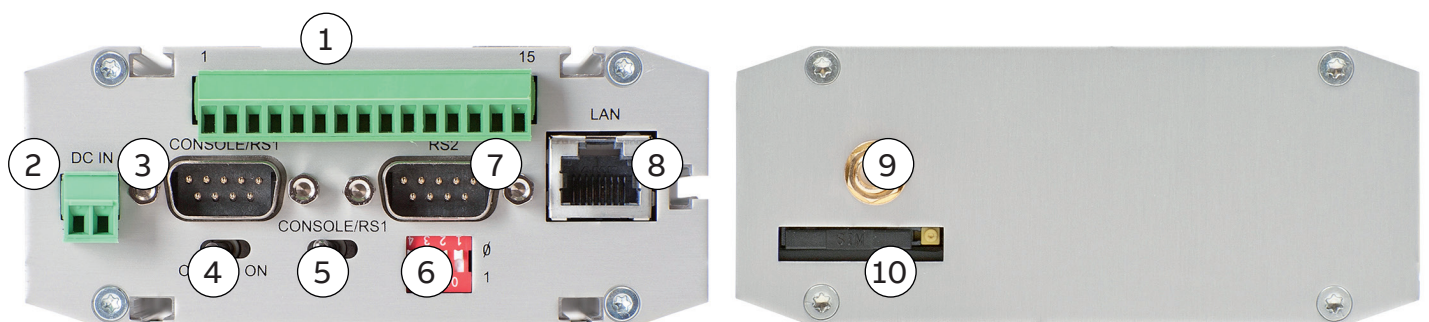


Quick Start Guide

ARG600/ARR600 Wireless Gateway



- | | |
|---|--|
| 1 | LAN port(s) |
| 2 | SIM card slot(s) |
| 3 | Console/serial port |
| 4 | DIP switches |
| 5 | Application serial port (RS2) |
| 6 | Antenna connector FME (male) |
| 7 | Power supply 12...36 VDC, limited (<240VA) power source that fulfills the requirements of standard IEC 60950-1 |



- | | |
|----|--|
| 1 | I/O connector (only ARR600 models) |
| 2 | Power supply 12...48 VDC, limited (<240VA) power source that fulfills the requirements of standard IEC 60950-1 |
| 3 | Console/serial port |
| 4 | Power switch |
| 5 | Console/serial port switch |
| 6 | DIP switches |
| 7 | Application serial port (RS2) |
| 8 | LAN port(s) |
| 9 | Antenna connector SMA (female) |
| 10 | SIM card slot(s) |

Getting started

Power-up and SIM card installation

Insert the SIM card. Push the yellow button in the SIM card slot to eject the SIM card tray. Insert the SIM card to the tray (contacts facing up) and push it firmly and carefully back to its holder. Attach the power supply and switch the device on. Under normal circumstances, the device is able to automatically connect to the operator's cellular network. In problem situations you can log in to the Arctic Web user interface by using Web browser and navigating to **Network** → **Mobile WAN**.

i If your SIM card requires a PIN code, do not install it before you have configured the Arctic device PIN code settings.

Login to the Arctic Web user interface

Connect the Ethernet cable between the Arctic device LAN port and your computer.

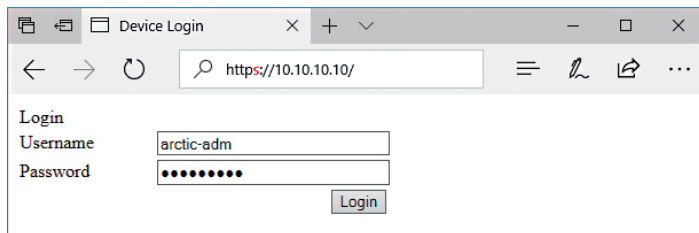


Figure 1. Browser https example

Configure your computer to use the same IP address space as the Arctic device. For example, your computer IP could be 10.10.10.11 with netmask 255.255.255.0. Check the connection with the ping command.

Connect to the Arctic device using the Web browser. The default address of the Arctic device is <https://10.10.10.10/>. Remember to use **https** and not http.

Accept the self-signed certificate in the browser.

Log in to the device. The username is **arctic-adm** and the default password is **arcticm2m**.

i It is highly recommended that the default password is changed before the product is connected to a public cellular network.

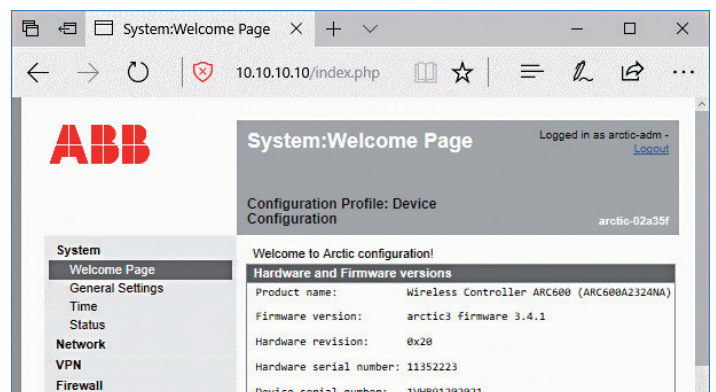


Figure 2. Welcome page in the ARG600 Web user interface

Wireless network settings

Log in to the Arctic Web user interface using your Web browser.

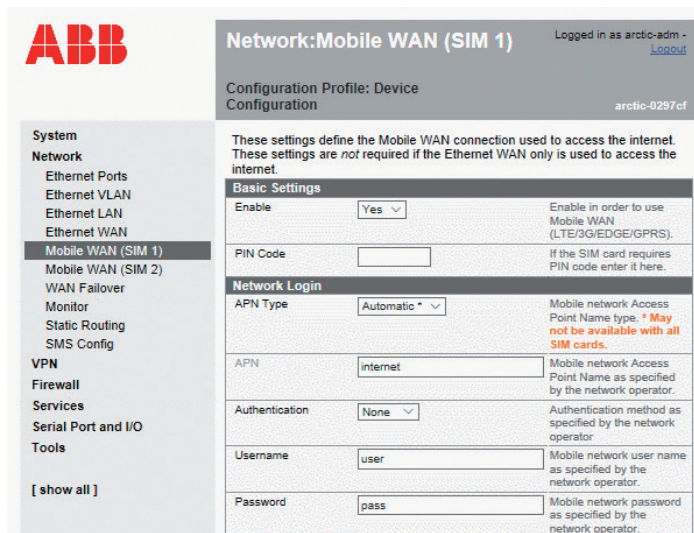
Navigate to **Network** → **Mobile WAN**.

Change the APN type from "Automatic" to "Manual".

Set the Access Point Name (APN) appropriately (usually INTERNET or operatorname.com). As this setting depends on your mobile operator, ensure the APN settings directly from the operator.

Set the other settings such as the PIN code, authentication, username and password if required by the operator's subscription.

Reboot the Arctic device and check the settings and the cellular network connection status from **System** → **Status**.



Complete customer documentation is available in the product pages that can be accessed through abb.com/mediumvoltage

Figure 3. Mobile WAN settings

For more information, please contact

ABB Distribution Solutions

P.O. Box 699

FI-65101 Vaasa, Finland

Phone: + 358 10 22 11

abb.com/mediumvoltage

We reserve the right to make technical changes or modify the contents of this document without prior notice. With regard to purchase orders, the agreed particulars shall prevail. ABB does not accept any responsibility whatsoever for potential errors or possible lack of information in this document.

We reserve all rights in this document and in the subject matter and illustrations contained therein. Any reproduction, disclosure to third parties or utilization of its contents – in whole or in parts – is forbidden without prior written consent of ABB.
Copyright© 2022 ABB. All rights reserved.