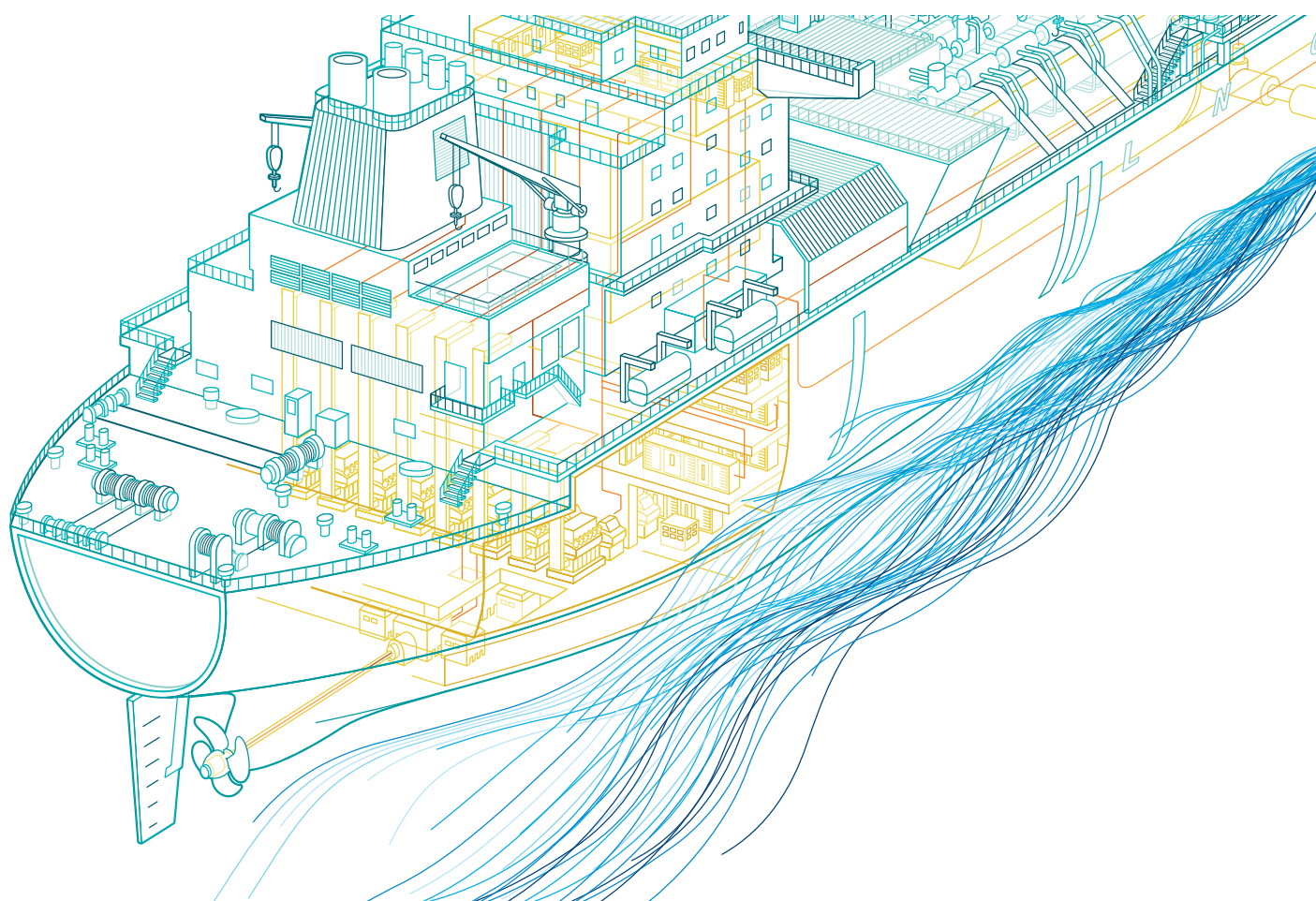


Reference list March 1, 2014

Reference list LNG carriers Electric power and propulsion systems



Electric propulsion has emerged as the technology of choice due to its superior fuel efficiency and low emissions. ABB has long and proven track record in electric propulsion. To LNG carriers, ABB typically supplies all high voltage (HV) electrical equipment, from the generators to the propulsion motors and all related propulsion control systems.

Power and productivity
for a better world™



References LNG carriers

Electric power and propulsion systems

Year	Name	Owner	Yard	Yard#
2015	Newbuilding	Sovcomflot (Yamal)	DSME	2418
2016	Newbuilding	Gaslog LNG	Samsung Heavy Industries	2103
2016	Newbuilding	Gaslog LNG	Samsung Heavy Industries	2102
2016	Newbuilding	Gaslog LNG	Samsung Heavy Industries	2073
2015	Newbuilding	Gaslog LNG	Samsung Heavy Industries	2072
2016	Newbuilding	K-Line	Kawasaki Heavy Industries	22N1718
2015	Newbuilding	BW Gas	Samsung Heavy Industries	2074
2016	Newbuilding	Chevron	Samsung Heavy Industries	2070
2015	Newbuilding	Chevron	Samsung Heavy Industries	2069
2015	Newbuilding	Brunei LNG	Hyundai Heavy Industries	2607
2015	Newbuilding	Brunei LNG	Hyundai Heavy Industries	2606
2015	Newbuilding	Alpha Tankers	STX	1670
2015	Newbuilding	Golar LNG	Hyundai Heavy Industries	659
2015	Newbuilding	Golar LNG	Hyundai Heavy Industries	658
2015	Newbuilding	BW Gas	Hyundai Heavy Industries	2572
2015	Newbuilding	BW Gas	Hyundai Heavy Industries	2571
2014	Newbuilding	Golar LNG	Samsung Heavy Industries	2056
2014	Golar Frost	Golar LNG	Samsung Heavy Industries	2055
2015	Newbuilding	Sovcomflot	STX	1913
2014	Newbuilding	Sovcomflot	STX	1912
2014	Newbuilding	Sovcomflot	STX	1911
2013	Newbuilding	Sovcomflot	STX	1910
2014	Cool Explorer	Thenamaris	Samsung Heavy Industries	2049
2014	Golar Ice-Winter	Golar LNG	Samsung Heavy Industries	2048
2014	Golar Snow-Winter	Golar LNG	Samsung Heavy Industries	2047
2013	Cool Runner	Thenamaris	Samsung Heavy Industries	2046
2013	Cool Voyager	Thenamaris	Samsung Heavy Industries	2045
2014	Gaslog Salem	GasLog LNG	Samsung Heavy Industries	2044
2014	Gaslog Saratoga	GasLog LNG	Samsung Heavy Industries	2043
2014	Gaslog Southpoint	GasLog LNG	Samsung Heavy Industries	2042
2014	Gaslog Seattle	GasLog LNG	Samsung Heavy Industries	2041
2014	Golar Igloo	Golar LNG	Samsung Heavy Industries	2031
2013	Golar Bear	Golar LNG	Samsung Heavy Industries	2027
2013	Golar Celcius	Golar LNG	Samsung Heavy Industries	2026
2013	Golar Eskimo	Golar LNG	Samsung Heavy Industries	2024
2013	Golar Penguin	Golar LNG	Samsung Heavy Industries	2023
2013	Golar Crystal	Golar LNG	Samsung Heavy Industries	2022
2013	Golar Seal	Golar LNG	Samsung Heavy Industries	2021

Year	Name	Owner	Yard	Yard#
2013	Gaslog Skagen	GasLog LNG	Samsung Heavy Industries	2017
2013	Gaslog Sydney	GasLog LNG	Samsung Heavy Industries	2016
2013	Gaslog Santiago	GasLog LNG	Samsung Heavy Industries	1947
2013	Gaslog Shanghai	GasLog LNG	Samsung Heavy Industries	1946
2014	Newbuilding	Chevron	Samsung Heavy Industries	1942
2014	Newbuilding	Chevron	Samsung Heavy Industries	1941
2014	Newbuilding	Chevron	Samsung Heavy Industries	1921
2014	Newbuilding	Chevron	Samsung Heavy Industries	1920
2011	Amali	Brunei LNG	DSME	2277
2011	Arkat	Brunei LNG	DSME	2273
2011	Cubal	Angola /MINT	Samsung Heavy Industries	1813
2011	Lobito	Angola /MINT	Samsung Heavy Industries	1812
2011	Malanje	Angola /MINT	Samsung Heavy Industries	1811
2011	Soyo	Angola /MINT	Samsung Heavy Industries	1810
2010	Catillo de Santisteban	Elcano	STX	S3008
2010	Gaslog Chelsea	STX PanOcean	Hanjin	Hn. 193
2010	GasLog Singapore	GasLog LNG	Samsung Heavy Industries	1642
2010	GasLog Savannah	GasLog LNG	Samsung Heavy Industries	1641
2009	Suez Cape Ann	Leif Hoegh LNG	Samsung Heavy Industries	1689
2009	Suez Neptune	Leif Hoegh LNG	Samsung Heavy Industries	1688
2009	Aseem	ILTC (K-Line/Petronet)	Samsung Heavy Industries	1686
2009	Seri Balqis	MISC	Mitsubishi, Nagasaki Shipyard	2224
2009	BW GDF Suez Brussels	BW Gas	DSME	2259
2009	BW GDF Suez Paris	BW Gas	DSME	2258
2009	Meridan Spirit	Maersk LNG	Samsung Heavy Industries	1633
2009	Woodside Donaldson	Maersk LNG	Samsung Heavy Industries	1632
2009	Maersk Magellan	Maersk LNG	Samsung Heavy Industries	1626
2008	Seri Balhaf	MISC	Mitsubishi, Nagasaki Shipyard	2223
2008	Tangghu Palung	K-Line	Samsung Heavy Industries	1634
2008	Maersk Arwa	Maersk LNG	Samsung Heavy Industries	1625
2008	Maersk Marib	Maersk LNG	Samsung Heavy Industries	1608
2008	Tangguh Jaya	K-Line	Samsung Heavy Industries	1620
2008	Tangguh Foja	K-Line	Samsung Heavy Industries	1619
2008	Maersk Metahne	Maersk LNG	Samsung Heavy Industries	1607
2006	Gaselys	NYK	Chantiers de l'Atlantique	P32
2005	Provalys	Gaz de France	Chantiers de l'Atlantique	N32

Projects delivered and/or ordered as of March 1, 2014. Vessel name and owner is shown as time of delivery from ABB.

Contact us

For more information please contact:

ABB AS

Marine

Bergerveien 12

P.O.Box 94

N-1375 Billingstad

Norway

Phone: +47 22 87 20 00

Fax: +47 22 87 47 80

www.abb.com/marine