

## Instrument transformers

# Type SCM Indoor current transformer

### Product features

- 600 volt, indoor, 10 kV BIL
- 25 through 400 Hertz
- Primary amperes: 200-4000

### Application

The SCM current transformer is used as the source of current for relaying and metering.

### Construction features

The ring-type core is insulated and toroidally wound with a fully distributed secondary winding. The protective case, made of an impact-resistant polycarbonate, is ultrasonically sealed.

### Secondary terminals

Secondary terminals are 10-32 brass terminal studs with hardware.

### Curves

Saturation, overcurrent, ratio correction factor, and phase-angle curves are available upon request.

### Test reports

IEEE test reports are stored electronically and can be e-mailed in various formats at the time of shipment.

### Standards

This unit meets all applicable IEEE and NEMA standards and is a UL Recognized Component.



## Selection guide

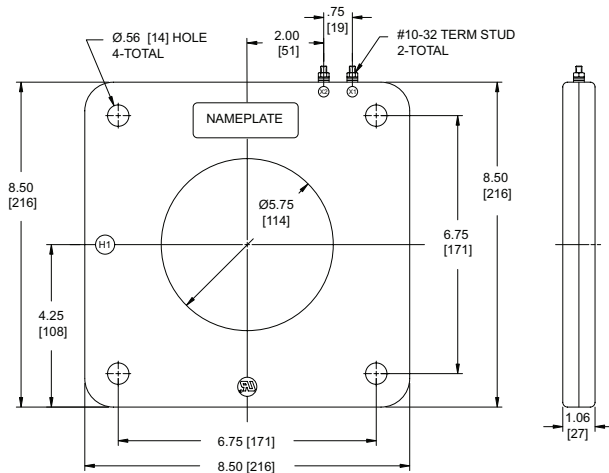
| Primary<br>ampere rating       | Continuous<br>current rating |       | IEEE metering accuracy |       |       |       |       | IEEE<br>relaying accuracy | Thermal<br>rating | Style number |
|--------------------------------|------------------------------|-------|------------------------|-------|-------|-------|-------|---------------------------|-------------------|--------------|
|                                | 30° C                        | 55° C | B-0.1                  | B-0.2 | B-0.5 | B-0.9 | B-1.8 |                           |                   |              |
| <b>Type SCM (5.75" window)</b> |                              |       |                        |       |       |       |       |                           |                   |              |
| 200                            | 1.33                         | 1.0   | 2.4                    | 2.4   | -     | -     | -     | -                         | 60                | 7525A36G01   |
| 300                            | 1.33                         | 1.0   | 1.2                    | 2.4   | 2.4   | -     | -     | C5                        | 60                | 7525A36G02   |
| 400                            | 1.33                         | 1.0   | 0.6                    | 1.2   | 2.4   | 2.4   | -     | C5                        | 60                | 7525A36G03   |
| 500                            | 1.33                         | 1.0   | 0.6                    | 0.6   | 1.2   | 2.4   | -     | C5                        | 60                | 7525A36G04   |
| 600                            | 1.33                         | 1.0   | 0.3                    | 0.6   | 1.2   | 2.4   | -     | C10                       | 60                | 7525A36G05   |
| 800                            | 1.33                         | 1.0   | 0.3                    | 0.3   | 0.6   | 0.6   | 1.2   | C10                       | 60                | 7525A36G06   |
| 1000                           | 1.33                         | 1.0   | 0.3                    | 0.3   | 0.3   | 0.6   | 1.2   | C10                       | 60                | 7525A36G07   |
| 1200                           | 1.33                         | 1.0   | 0.3                    | 0.3   | 0.3   | 0.6   | 1.2   | C15                       | 60                | 7525A36G08   |
| 1500                           | 1.33                         | 1.0   | 0.3                    | 0.3   | 0.3   | 0.3   | 0.6   | C15                       | 60                | 7525A36G09   |
| 1600                           | 1.33                         | 1.0   | 0.3                    | 0.3   | 0.3   | -     | 0.6   | C5                        | 60                | 7525A36G10   |
| 2000                           | 1.33                         | 1.0   | 0.3                    | 0.3   | 0.3   | 0.3   | 0.3   | C10                       | 60                | 7525A36G11   |
| 2500                           | 1.33                         | 1.0   | 0.3                    | 0.3   | 0.3   | 0.3   | 0.3   | C10                       | 60                | 7525A36G12   |
| 3000                           | 1.33                         | 1.0   | 0.3                    | 0.3   | 0.3   | 0.3   | 0.3   | C15                       | 60                | 7525A36G13   |
| 4000                           | 1.0                          | 0.5   | 0.3                    | 0.3   | 0.3   | 0.3   | 0.3   | -                         | 50                | 7525A36G14   |

Mechanical rating: 180 x rated current

Optional mounting feet: 9625A64G01

Additional styles available upon request. Contact your ABB sales representative or call +1-252-827-3212 for more information.

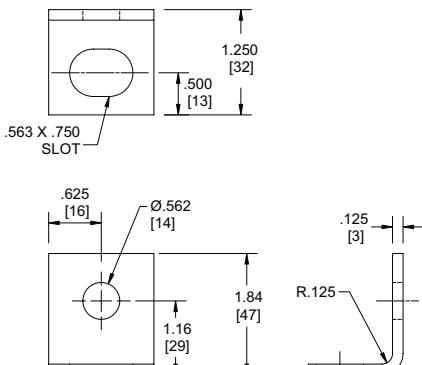
## Dimensions



For more information please contact:

**ABB Inc.**  
**Medium Voltage Distribution Components**  
 3022 NC 43 North  
 Pinetops, NC 27864  
 USA  
 Phone: +1 252 827 3212  
 Fax: +1 252 827 4286  
[www.abb.com/mediumvoltage](http://www.abb.com/mediumvoltage)

Type SCM (approximate weight: 5 lbs)



Optional mounting feet

### Note:

The information contained in this document is for general information purposes only. While ABB strives to keep the information up to date and correct, it makes no representations or warranties of any kind, express or implied, about the completeness, accuracy, reliability, suitability or availability with respect to the information, products, services, or related graphics contained in the document for any purpose. Any reliance placed on such information is therefore strictly at your own risk. ABB reserves the right to discontinue any product or service at any time.

Copyright 2004 ABB.

All rights reserved.



UL Recognized Component; File No. E96461

Power and productivity  
 for a better world™

