

Unibox IP40 consumer units

1SLC801002B0201

*Elegant
and
functional
in the flush-
mounting
version too*



Unibox strikes again. ABB SACE's elegant, easy to install and use IP40 consumer units are now also available in the flush-mounting version for residential and tertiary application.

Made in RAL 9016 white, self-extinguishing thermoplastic material, the new Unibox fit in well with almost any kind of décor; you can choose between the transparent, smoky door or the opaque version. The models in the range can house from 8 to 54 modules and cabling is made easy by removing the frame so that you can work at the work bench.

Resistance to chemical and atmospheric agents, UV rays, impacts (IK 09) is guaranteed; degree of protection is IP40.

The accessories allow you to install the configuration with accurate division of space and give a wide range of functions.

Flush-mounting Unibox consumer units are made in compliance with CEI 23-48, CEI 23-49 and IEC 670 Standards.

They have been awarded the IMQ mark.

ABB



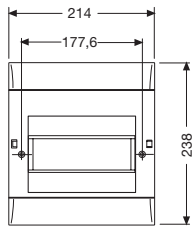
The high quality of the constructional characteristics guarantee that the new Unibox flush-mounting consumer units are functional and safe to install and use. In particular:

- IP 40 degree of protection;
- insulation Class II;
- **self-extinguishing, thermoplastic material**, resistant to abnormal heat and fire up to 650 °C (glow-wire test) in compliance with IEC 695-2-1 Standard;
- dimensional stability from -20 °C to +85 °C;
- shock resistance 10 joule (IK 09);
- reversible door;
- push-pull door opening-closing mechanism;
- door opens up to 180° for multi-row consumer units;
- scratch-proof protective film on door;
- designed for mounting combination lock;
- flush-mounting enclosure fitted with push-in inlets for inserting corrugated protective conduits;
- **extractable DIN rail frame**;
- 150 mm interaxis between DIN rails;
- terminal-holders and terminal bars supplied separately or already assembled;
- designed to be used with the **Unifix SL** fast-cabling system;
- designed with slots at hook-on points to compensate for any imperfections when installing the flush-mounting enclosure.

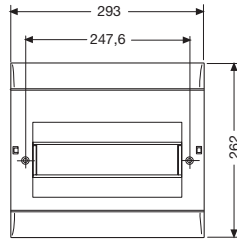
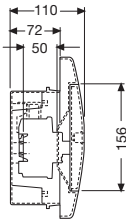
Order codes

Code	Description/Dimensions BxHxD (mm)	N° items box/Pack
Unibox flush-mounting consumer units		
1SL0500A00	8 modules – opaque door – RAL 9016 / 214x238x110	1/9
1SL0510A00	8 modules – transparent smoky door – RAL 9016 / 214x238x110	1/9
1SL0501A00	12 modules – opaque door – RAL 9016 / 293x262x110	1/7
1SL0511A00	12 modules – transparent smoky door – RAL 9016 / 293x262x110	1/7
1SL0502A00	24 modules – opaque door – RAL 9016 / 293x408x118	1/5
1SL0512A00	24 modules – transparent smoky door – RAL 9016 / 293x408x118	1/5
1SL0503A00	36 modules – opaque door – RAL 9016 / 293x533x118	1/3
1SL0513A00	36 modules – transparent smoky door – RAL 9016 / 293x533x118	1/3
1SL0504A00	54 modules – opaque door – RAL 9016 / 401x533x118	1/1
1SL0514A00	54 modules – transparent smoky door – RAL 9016 / 401x533x118	1/1
Assembled terminal boards		
12492	for 8 modules – articles 12540x1 + 12531x1 + 12532x2	10/40
12495	for 12 modules – articles 12541x1 + 12532x2	10/40
12504	for 24 modules – articles 12541x2 + 12531x2 + 12533x2	10/40
12505	for 36 modules – articles 12541x2 + 12531x2 + 12534x2	10/40
12506	for 54 modules – articles 12542x2 + 12535x2	5/20
Terminal holders		
12540	for 8 modules	12/144
12541	for 12, 24, 36 modules	12/144
12542	for 54 modules	12/108
Terminal bars		
12531	with 5 holes ø 4.5 mm	20/240
12532	with 10 holes ø 4.5 mm and 3 holes ø 5.6 mm	20/240
12533	with 16 holes ø 4.5 mm and 3 holes ø 5.6 mm	20/240
12534	with 15 holes ø 4.5 mm and 6 holes ø 5.6 mm	20/240
12535	with 19 holes ø 4.5 mm and 6 holes ø 5.6 mm	20/240
Spare doors		
12511	white RAL 9016 for 8 modules consumer unit	1/25
12512	white RAL 9016 for 12 modules consumer unit	1/15
12513	white RAL 9016 for 24 modules consumer unit	1/10
12514	white RAL 9016 for 36 modules consumer unit	1/5
12515	white RAL 9016 for 54 modules consumer unit	1/5
12521	transparent smoky for 8 modules consumer unit	1/25
12522	transparent smoky for 12 modules consumer unit	1/15
12523	transparent smoky for 24 modules consumer unit	1/10
12524	transparent smoky for 36 modules consumer unit	1/5
12525	transparent smoky for 54 modules consumer unit	1/5
12526	push-pull mechanism (always to be ordered with spare doors)	5/1500
Accessories		
1SL2857A00	module cover, 1 module	50/1500
1SL2859A00	module cover, 4 modules	50/600
12530	combination lock with key	20/300
12860	screw lead sealing accessory	50/1500

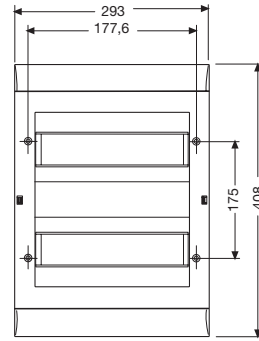
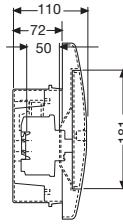
Overall dimensions



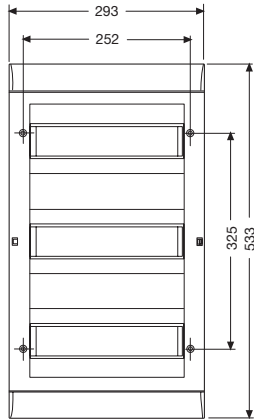
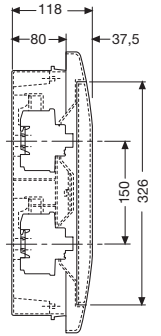
8 modules



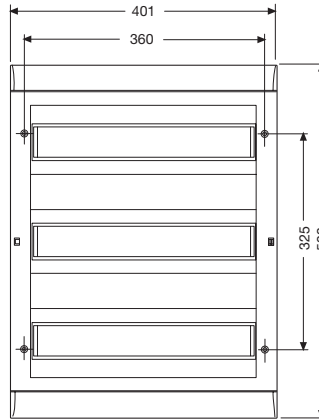
12 modules



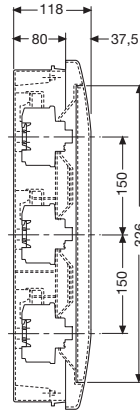
24 modules



36 modules



54 modules



UNI EN ISO 9001

Due to possible developments of standards as well as of materials, the characteristics and dimensions specified in the present catalogue may only be considered binding after confirmation by ABB SACE.

1SLC01002B0201 Febbraio '03
Printed in Italy
Tipografia

ABB SACE S.p.A.

Enclosures and Cable Systems

Viale Vicenza, 61

36063 Marostica (VI) - Italy

Tel.: ++39 0424.478200 - Telefax: ++39 0424.478305

<http://www.abb.com>