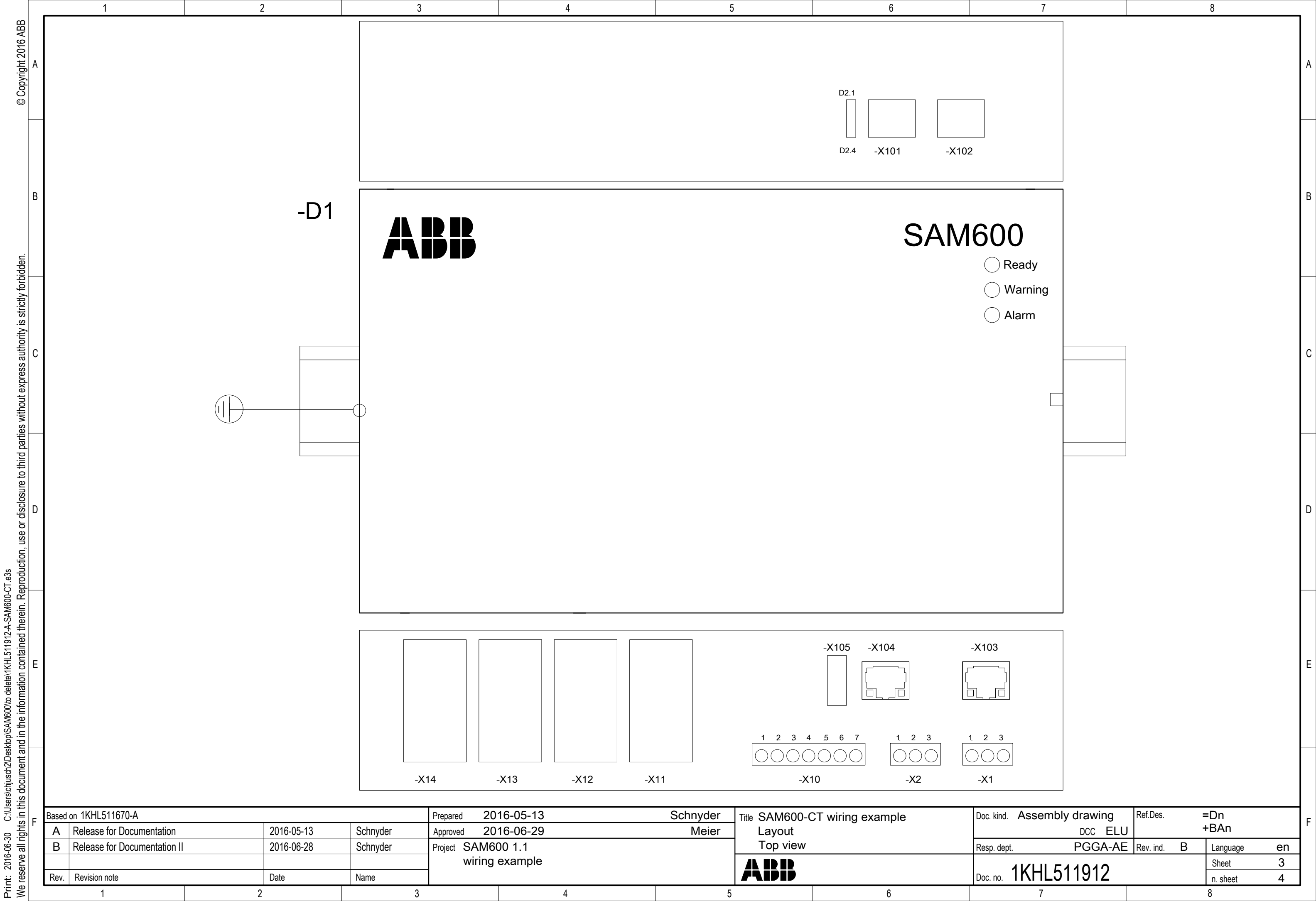


SAM600-CT wiring example

The schematics is applicable to the following products
 SAM600*1.10-CT-DA-A: SAM600-CT (1A)
 SAM600*1.10-CT-DA-B: SAM600-CT (5A)

Based on 1KHL511670-A				Prepared	2016-05-13	Schnyder	Title	SAM600-CT wiring example		Doc. kind.	Circuit diagram		Ref.Des.	=Dn +BAN	
A	Release for Documentation	2016-05-13	Schnyder	Approved	2016-06-29	Meier	Title page	DCC EFS		PGGA-AE		Rev. ind.	B	Language	en
B	Release for Documentation II	2016-06-28	Schnyder	Project SAM600 1.1 wiring example				Resp. dept.		B		Language	en		
Rev.	Revision note	Date	Name				ABB	Doc. no.		1KHL511912		Sheet	1		
										No.sheets	8				



© Copyright 2016 ABB

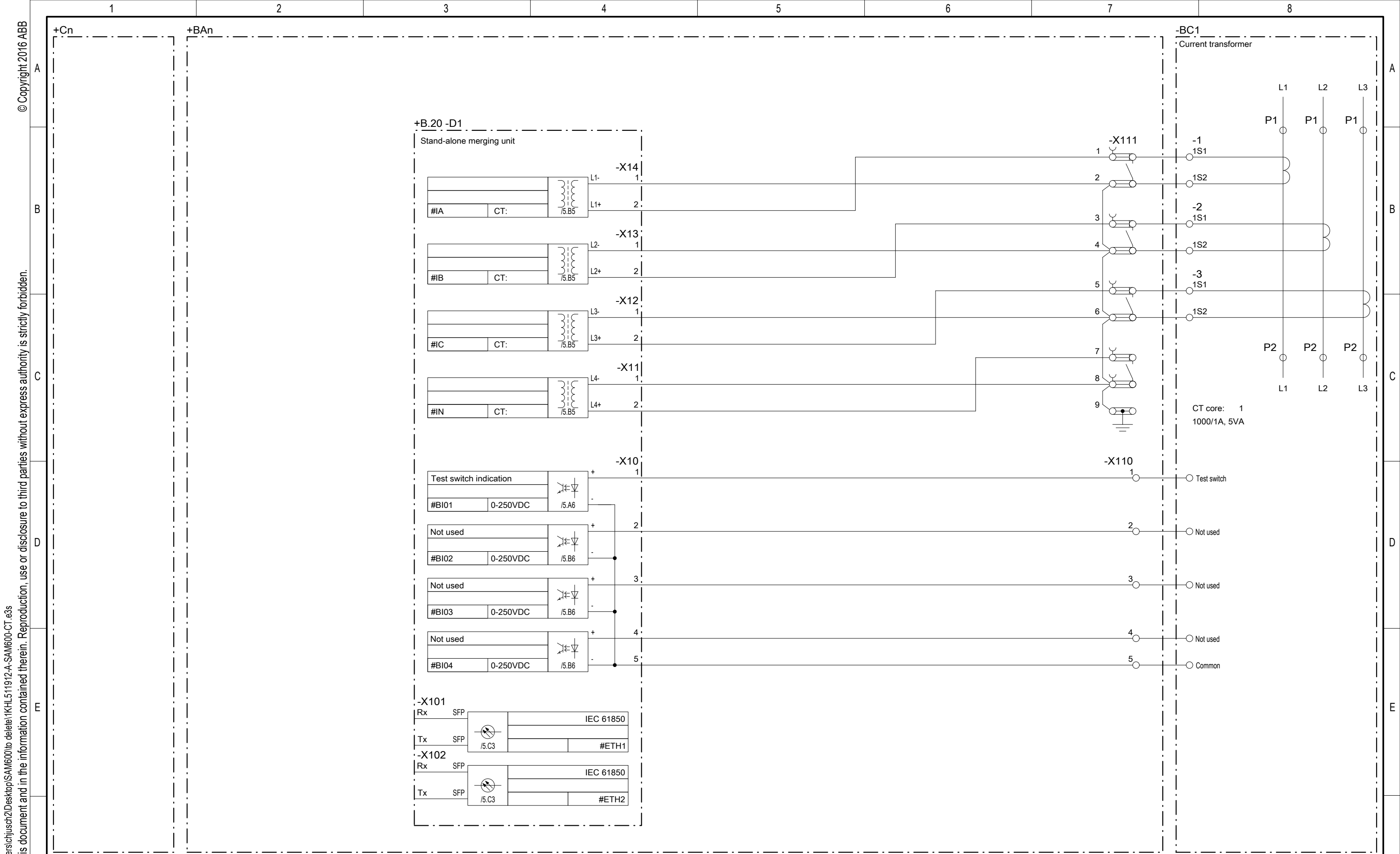
Print: 2016-06-30 C:\Users\chjusch2\Desktop\SAM600\to delete\1KHL511912-A-SAM600-CT.e3s We reserve all rights in this document and in the information contained therein. Reproduction, use or disclosure to third parties without express authority is strictly forbidden.

Based on 1KHL511670-A			
A	Release for Documentation	2016-05-13	Schnyder
B	Release for Documentation II	2016-06-28	Schnyder
Rev.	Revision note	Date	Name

Prepared	2016-05-13	Schnyder
Approved	2016-06-29	Meier
Project	SAM600 1.1 wiring example	

Title	SAM600-CT wiring example
Layout	Top view
ABB	

Doc. kind.	Assembly drawing	Ref.Des.	=Dn +BAn
	DCC ELU		
Resp. dept.	PGGA-AE	Rev. ind.	B
		Language	en
Doc. no.	1KHL511912	Sheet	3
		n. sheet	4



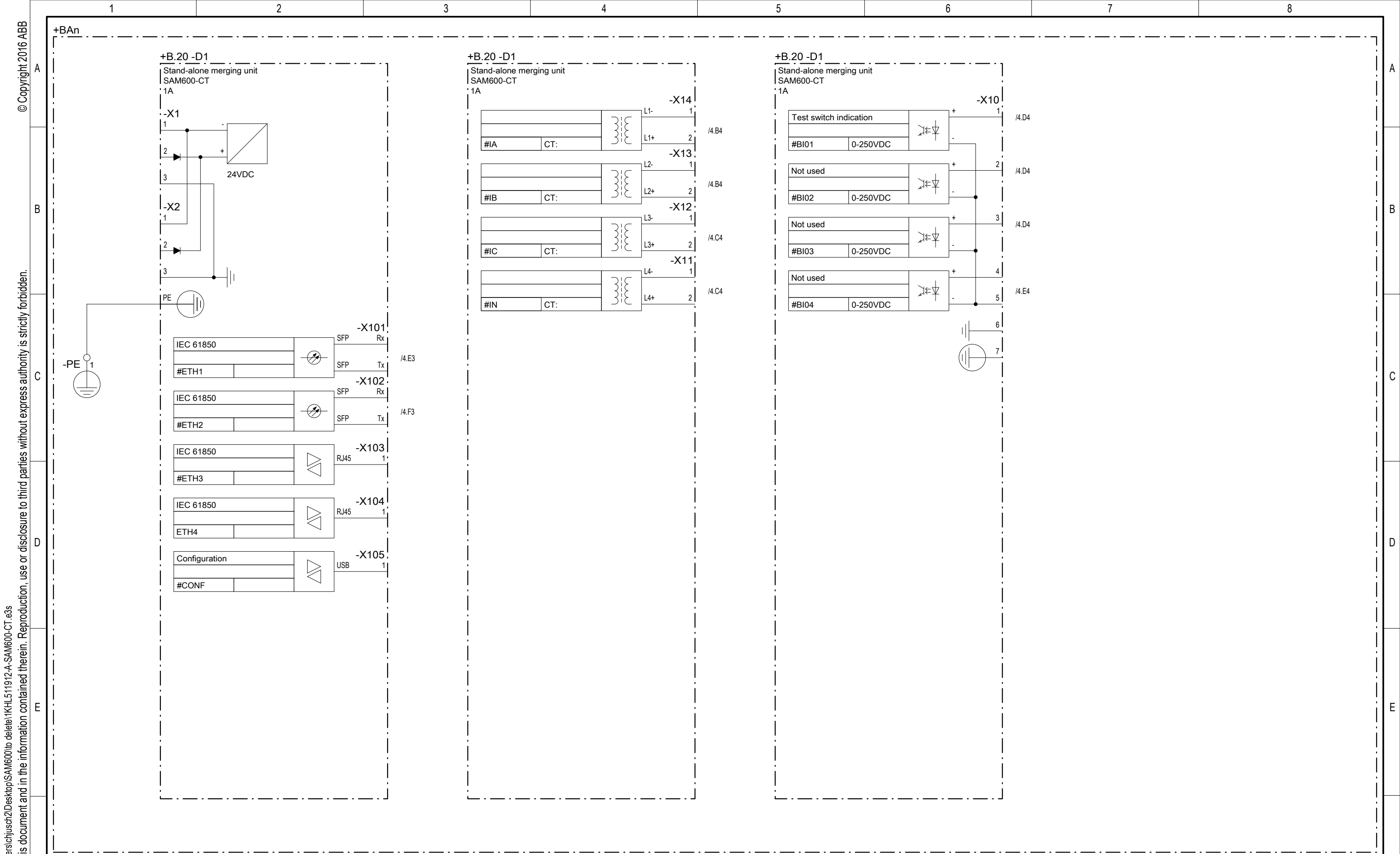
© Copyright 2016 ABB
 We reserve all rights in this document and in the information contained therein. Reproduction, use or disclosure to third parties without express authority is strictly forbidden.

Based on 1KHL511670-A			
A	Release for Documentation	2016-05-13	Schnyder
B	Release for Documentation II	2016-06-28	Schnyder
Rev.	Revision note	Date	Name

Prepared	2016-05-13	Schnyder
Approved	2016-06-29	Meier
Project	SAM600 1.1 wiring example	

Title	SAM600-CT wiring example Current transformer BC1
ABB	

Doc. kind.	Circuit diagram	Ref.Des.	=Dn
	DCC EFS		
Resp. dept.	PGGA-AE	Rev. ind.	B
		Language	en
Doc. no.	1KHL511912	Sheet	4
		n. sheet	5

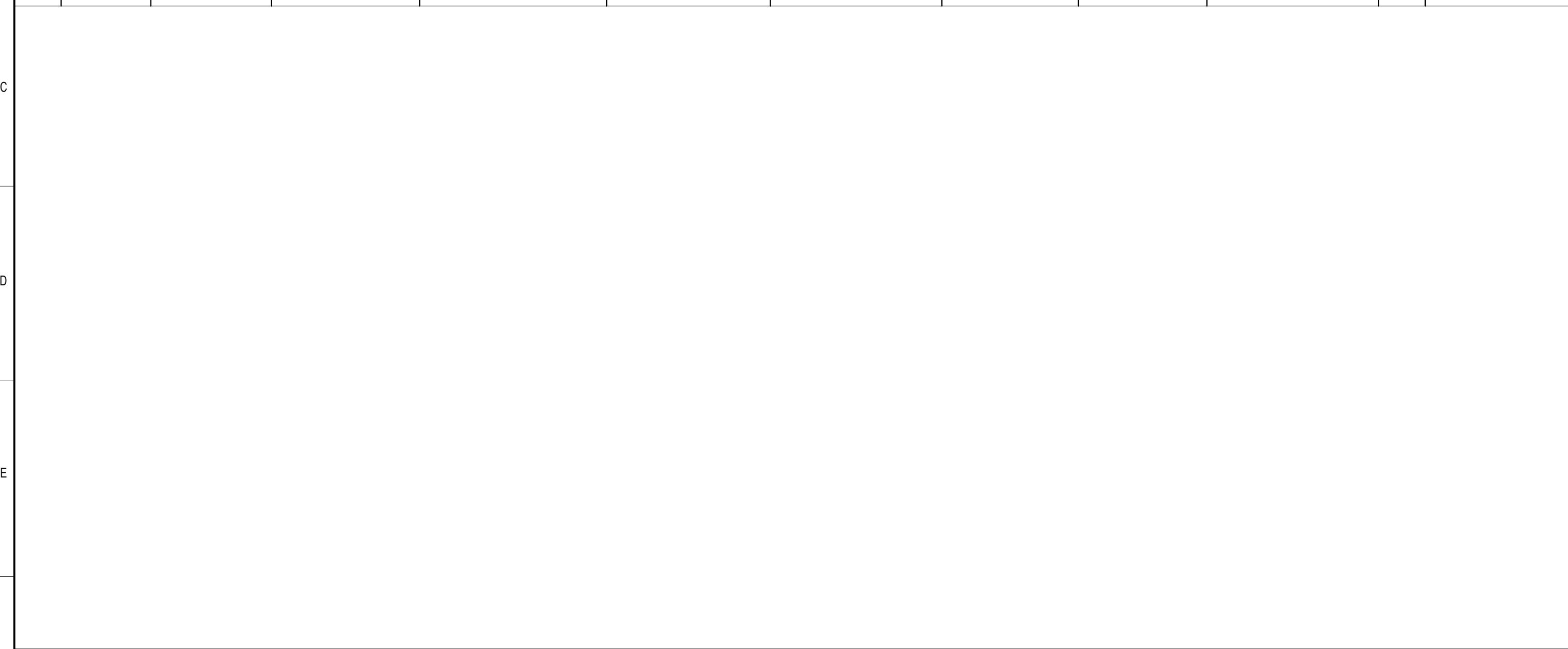



Print: 2016-06-30 C:\Users\chjusch2\Desktop\SAM600\to delete\1KHL511912-A-SAM600-CT.e3s
 We reserve all rights in this document and in the information contained therein. Reproduction, use or disclosure to third parties without express authority is strictly forbidden.

Based on 1KHL511670-A			Prepared 2016-05-13	Schnyder	Title SAM600-CT wiring example	Doc. kind. Circuit diagram	Ref.Des. =Dn
A	Release for Documentation	2016-05-13	Schnyder	Approved 2016-06-29	Meier	DCC EFS	
B	Release for Documentation II	2016-06-28	Schnyder	Project SAM600 1.1		Resp. dept. PGGA-AE	Rev. ind. B
				wiring example			Language en
Rev.	Revision note	Date	Name		ABB	Doc. no. 1KHL511912	Sheet 5
							n. sheet 6

© Copyright 2016 ABB
 C:\Users\chjusch2\Desktop\SAM600\to delete\1KHL511912-A-SAM600-CT.e3s
 We reserve all rights in this document and in the information contained therein. Reproduction, use or disclosure to third parties without express authority is strictly forbidden.

Pos.	Location	Device designation	Device description	Type designation	Technical data	Remark	Article number	Manufacturer	Manufacturer number	Qty.	Document / sheet
1		-D1	Stand-alone merging unit	SAM600-CT	1A	4 CT inputs, 4 binary inputs	1KHL160061R1001	ABB	SAM600*1.10-CT-DA-A	1	4,5
2		-X110	Disconnect terminal Cover End bracket	ST 2.5-MT D-ST 2.5-MT Clipfix 35	400V, 16A	0.08-2.5mm ² , max 2 wires, grey	1KHF405028P0001 1KHF405028P0051 GZN 590043P0008	Phoenix Contact Phoenix Contact Phoenix Contact	3036343 3030488 3022218	5 1 1	4
3		-X111	Terminal (PE) Feed-through terminal Transducer terminal Bracket switch bar Test socket strip Test socket strip Test socket strip Test socket strip Cover End bracket	STMED 6-PE STMED 6 STME 6 SB-ME 2-8 PAI-4-FIX YE PAI-4-FIX RD PAI-4-FIX BU PAI-4-FIX BK D-DTME 6 Clipfix 35	500V, 30A 500V, 30A	0.2-6mm ² , max 2 wires, grey 0.2-6mm ² , max 2 wires, grey 0.2-6mm ² , max 2 wires, grey 2 pole, right side mounting YE RD BU BK	1KHF405028P0040 1KHF405028P0039 1KHF405028P0038 1KHF405028P0142 1KHF405028P0162 1KHF405028P0167 1KHF405028P0166 1KHF405028P0165 1KHF405028P0083 GZN 590043P0008	Phoenix Contact Phoenix Contact Phoenix Contact Phoenix Contact Phoenix Contact Phoenix Contact Phoenix Contact Phoenix Contact Phoenix Contact Phoenix Contact Phoenix Contact	3035726 3035713 3035700 3034468 3032745 3032732 3032729 3032774 3034426 3022218	1 4 4 4 1 1 1 1 1 1 2	4 4 4 4 4 4 4 4 4 4

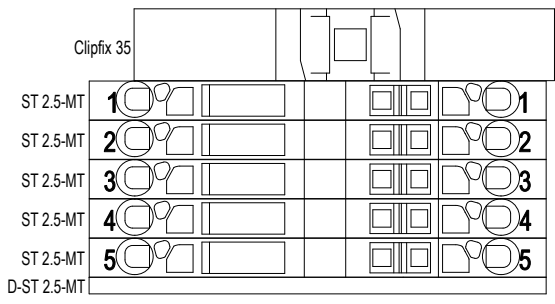


Based on 1KHL511670-A				Prepared	2016-05-13	Schnyder	Title	SAM600-CT wiring example		Doc. kind.	Parts list		Ref.Des.	=Dn
A	Release for Documentation	2016-05-13	Schnyder	Approved	2016-06-29	Meier	=Dn+BCn.B.20	=Dn+BCn.B.20		DCC EPB		+BAn.B.20		
B	Release for Documentation II	2016-06-28	Schnyder	Project SAM600 1.1 wiring example		Resp. dept. PGGA-AE				Rev. ind. B	Language en			
Rev.	Revision note	Date	Name							Doc. no. 1KHL511912		Sheet 6 n. sheet 7		

© Copyright 2016 ABB
 We reserve all rights in this document and in the information contained therein. Reproduction, use or disclosure to third parties without express authority is strictly forbidden.
 Print: 2016-06-30 C:\Users\chjusch2\Desktop\SAM600\to delete\1KHL511912-A-SAM600-CT.e3s

=Dn
 +BAn.B.20
-X110

Target Internal	
Device designation	Pin
=Dn +BAn.B.20 -D1	-X10:1
=Dn +BAn.B.20 -D1	-X10:2
=Dn +BAn.B.20 -D1	-X10:3
=Dn +BAn.B.20 -D1	-X10:4
=Dn +BAn.B.20 -D1	-X10:5



Target External		Cable designations	Cable type	Placement in schematics	Signal
Device designation	Pin				
				/4.D7	Test switch
				/4.D7	Not used
				/4.D7	Not used
				/4.E7	Not used
				/4.E7	Common

Based on 1KHL511670-A			Prepared 2016-05-13	Schnyder	Title SAM600-CT wiring example Terminal table -X110	Doc. kind. DCC EMA	Ref.Des. =Dn +BAn.B.20	
A	Release for Documentation	2016-05-13	Schnyder	Approved 2016-06-29			Meier	Resp. dept. PGGA-AE
B	Release for Documentation II	2016-06-28	Schnyder	Project SAM600 1.1 wiring example		Doc. no. 1KHL511912	Rev. ind. B	
Rev.	Revision note	Date	Name					



