


ACCESS TO: Front Only	PHASE: 3P4W	HAWAII ELEC LIGHT HILO HAWAII
CLASS: 2	AMPERE: 2000A	CODE: HL PT COMPT
LABEL: U/L SE	BUS MTL: Cu 1000A/in <sup>2</sup>	UTILITY PER EUSERC PG. 322, 330
VOLTAGE: 480/277V	PLATE: Silver Plate	METER PER EUSERC PG. 332, 326
STYLE: ReliaGear	RATING: Fully Rated	UGPS PER PG 345
BUS BRACING (RMS SYM): 100000A		LUG LANDING PER 347
DEV.MIN.INT.RATING (RMS SYM): 100000A		

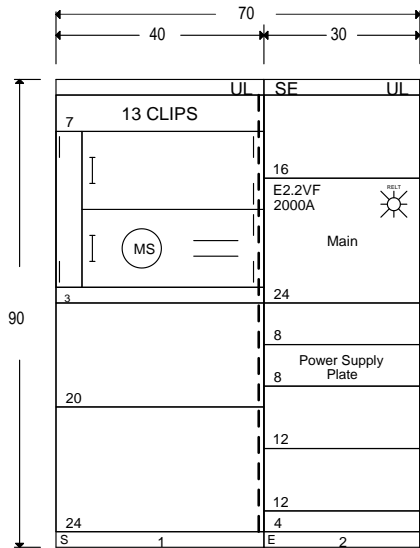
### SwitchBoard / Device Information

Circuit No.	Device	Trip Amps	Sensor Amps	Poles	Nameplates	Lugs/Cable Size	Notes
Main	E2.2VF	2000	2000	3			11,12,13,14,15,16,17,20,21,22

- NOTES:
1. Equipment ground bus furnished with lugs.
  2. Copper ground bus furnished.
  3. Switchboard furnished with Nameplates.
  4. All Nameplates to be fastened with screws.
  5. Shipping splits between each section, ship each section separately.
  6. Switchboard furnished with hinged gutter covers.
  7. Switchboard furnished with full height vertical bus for distribution sections.
  8. Switchboard furnished with fully rated panel.
  9. EUSERC utility section(s) furnished with handles and sealing provisions per EUSERC specifications.
  10. INSTALLATION NOTE: Caution: If switchboard is installed on a housekeeping slab greater than 2-1/2" the meter may be over the 6'3" maximum allowable meter height. Consult Utility if you need more information.
  11. Device is 100 percent rated.
  12. Device is furnished with integral ground fault protection.
  13. Device is furnished with RELT (Reduced Energy Let Through).
  14. Device requires RELT or ZSI feature if Authority having jurisdiction has adopted NEC 2014 code requirements.
  15. Device Furnished with Ekip Touch (LSIG) Programmer.
  16. Device furnished with (4Q) Auxiliary Contacts - 400V
  17. Device furnished with (S51/2) Bell Alarm - 250V
  18. Estimated total factory connected wiring points for the lineup 28.
  19. Estimated shipping weight for the lineup is 1564 lbs.
  20. Device furnished with DC Supply - 24V - 48V
  21. Device furnished with RELT-Ekip Signalling 2K3
  22. Device furnished with Padlock in open position

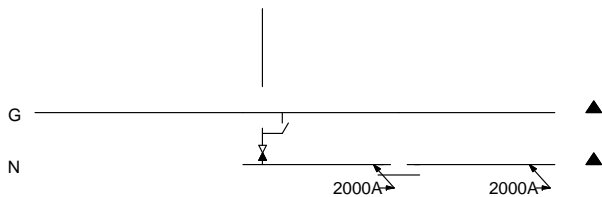
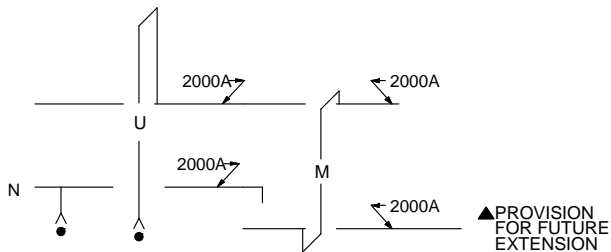
PROJECT NAME : Merchandise Program		DRAWING TITLE: Device Information	PRODUCT NAME:	DRAWING NO:
CUSTOMER:		CREATED BY:	ReliaGear	ITEM NO: RSBM42010CN1BEU
		DATE:	Merchandised SB	MARKS:Merch swbd 2000A MCB EUSERC N1
		REVISION NO.: 1		QUOTE NO:
				SHEET: 1 of 3

ACCESS TO: Front Only	PHASE: 3P4W	HAWAII ELEC LIGHT HILO HAWAII
CLASS: 2	AMPERE: 2000A	CODE: HL PT COMPT
LABEL: U/L SE	BUS MTL: Cu 1000A/in <sup>2</sup>	UTILITY PER EUSERC PG. 322, 330
VOLTAGE: 480/277V	PLATE: Silver Plate	METER PER EUSERC PG. 332, 326
STYLE: ReliaGear	RATING: Fully Rated	UGPS PER PG 345
BUS BRACING (RMS SYM): 100000A		LUG LANDING PER 347
DEV.MIN.INT.RATING (RMS SYM): 100000A		



733 lbs (Est.)      831 lbs (Est.)

FRONT VIEW



BUSSING DIAGRAM

● LUGS PROVISIONS ONLY PER POWER COMPANY SPECIFICATIONS

PROJECT NAME : Merchandise Program
CUSTOMER:

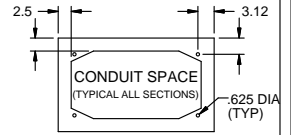


DRAWING TITLE: Front View/ Bussing
CREATED BY:
DATE:
REVISION NO.: 1

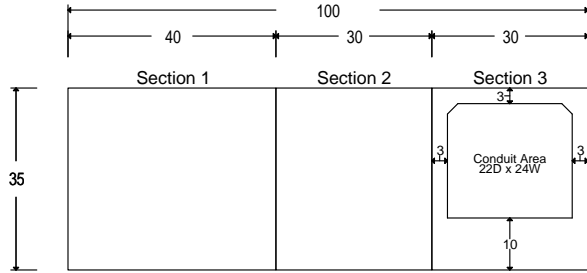
PRODUCT NAME:  
**ReliaGear**  
Merchandised SB

DRAWING NO:	RSBM42010CN1BEU
ITEM NO:	MARKS:Merch swbd 2000A MCB EUSERC N1
QUOTE NO:	
SHEET:	2 of 3

ACCESS TO: Front Only	PHASE: 3P4W	HAWAII ELEC LIGHT HILO HAWAII
CLASS: 2	AMPERE: 2000A	CODE: HL PT COMPT
LABEL: U/L SE	BUS MTL: Cu 1000A/in <sup>2</sup>	UTILITY PER EUSERC PG. 322, 330
VOLTAGE: 480/277V	PLATE: Silver Plate	METER PER EUSERC PG. 332, 326
STYLE: ReliaGear	RATING: Fully Rated	UGPS PER PG 345
BUS BRACING (RMS SYM):	100000A	LUG LANDING PER 347
DEV.MIN.INT.RATING (RMS SYM):	100000A	

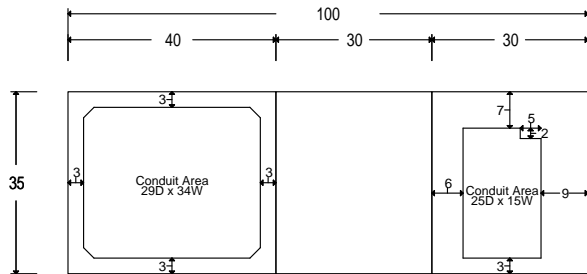


Top Conduit Area



Front Plan View

Bottom Conduit Area



Front Plan View

PROJECT NAME : Merchandise Program
CUSTOMER:



DRAWING TITLE: Conduit View
CREATED BY:
DATE:
REVISION NO.: 1

PRODUCT NAME: ReliaGear Merchandised SB
---

DRAWING NO:	RSBM42010CN1BEU
ITEM NO:	MARKS:Merch swbd 2000A MCB EUSERC N1
QUOTE NO:	
SHEET:	3 of 3