

E-BUS

# BORDLINE® HES880 drivetrain platform

For 12-meter electric buses

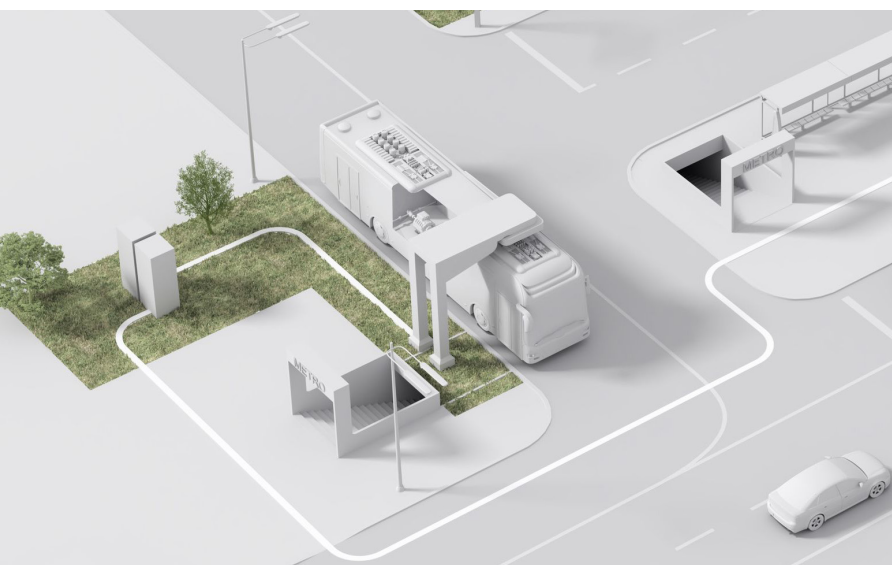


ABB offers highly efficient drivetrain solutions for electric buses consisting of HES880 drive modules and permanent magnet traction motors. Its design is based on proven technology. In addition, ABB offers a modular onboard battery system customized to the needs of vehicle manufacturers and transport operators.

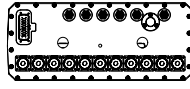
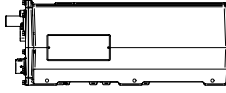
## Applications

Overnight and opportunity charging

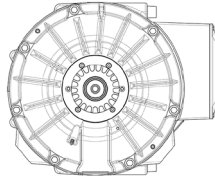
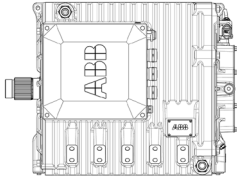
## Benefits

- + Compact and lightweight design
- + Modular platform solution covering all e-bus applications
- + Highly energy-efficient

	Traction Converter	Auxiliary Converter	Traction Motor	Traction Battery
Overnight / Opportunity Charging	HES880	HES AUX	Permanent magnet traction motor	Modular in 30.5 kWh steps

**HES880**

Dimensions (L x W x H)	448 mm x 430 mm x 180 mm
Weight without brake chopper	35 kg
Weight with brake chopper	38 kg
DC-link voltage	750 V
Continuous current	400 A
IP class	IP67
Cooling	water-glycol mix

**Permanent magnet traction motor**

Dimensions (L x D)	510 x 465 mm
Weight	350 kg
Power	190 kW
S1 Power	106 kW
Peak torque (20 sec)	2500 Nm
S1 torque (30 min)	1070 Nm
IP class	IP65
Cooling	water-glycol mix
Peak efficiency	96.5 %