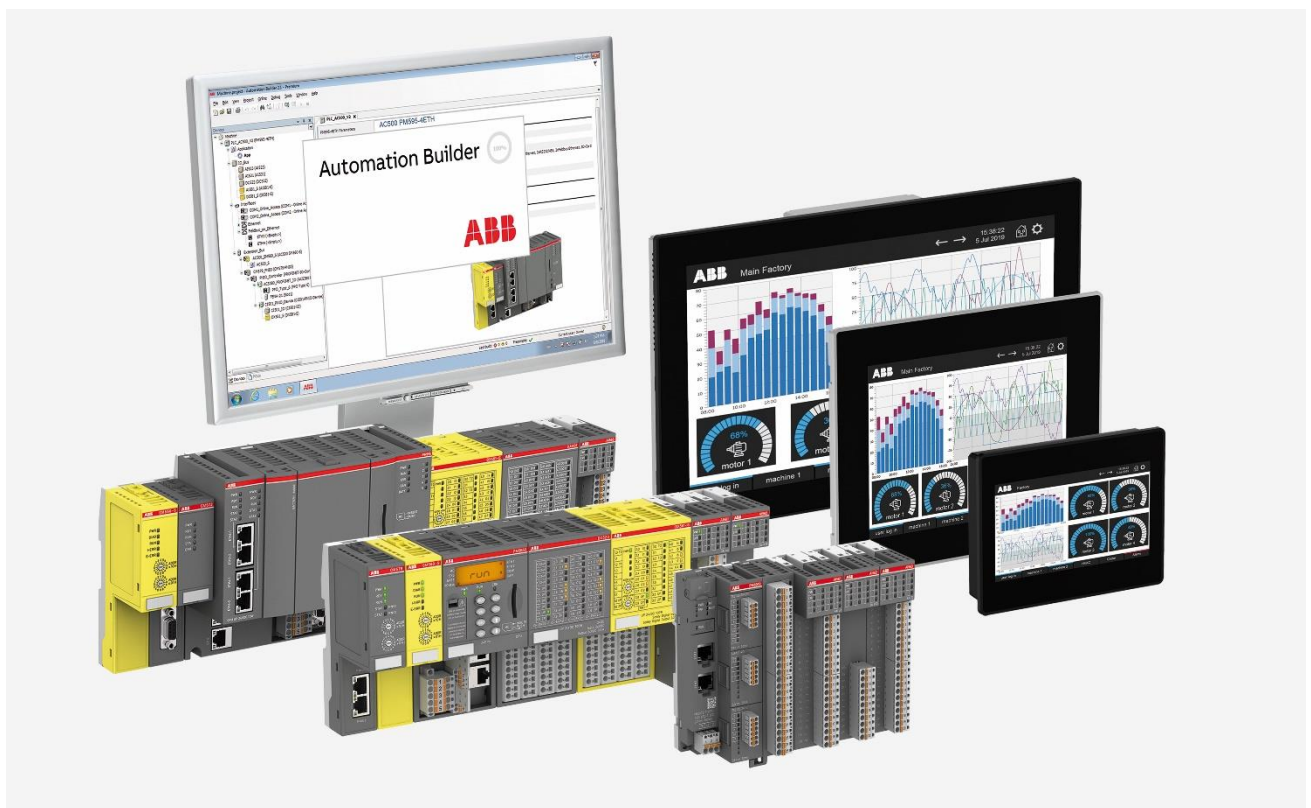


APPLICATION NOTE

PB610 V4.5.0 AND CP600 BSP V1.3 FAQ



Contents

1	Introduction	3
1.1	Scope of the document	3
1.2	Compatibility	3
1.3	Overview	3
2	Compatibility of CP600 BSPs	4
2.1	BSP Versions for download	4
3	How to update from BSP V1.0 to BSP V1.3	5
3.1	Automatic (Recommended)	5
3.2	Manually	6
4	Downgrade from BSP V1.3 to BSP V1.0	7
4.1	Automatic (Recommended)	7
4.2	Manually	7
5	Forgot password.....	9
6	Downloads	9
6.1	Panel Builder	9
6.2	Chromium Browser.....	10
7	General questions	11

1 Introduction

1.1 Scope of the document

Collect and answer frequently asked and important questions regarding PB610 V4.5.0 and CP600 BSP V1.3

1.2 Compatibility

This document is dealing with the active CP600 control panels portfolio – CP600-eCo, CP600 2nd generation and CP600-Pro.

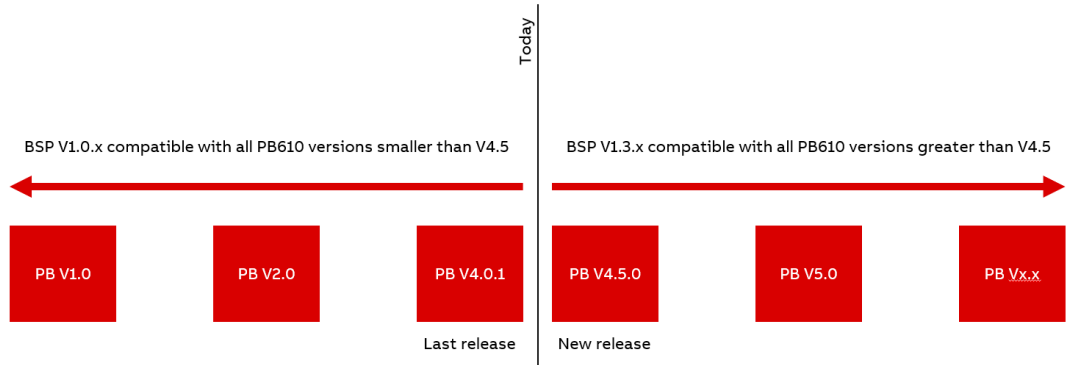
1.3 Overview



2 Compatibility of CP600 BSPs

CP600 BSP (Linux based panels)

Compatibility overview



PB610 V4.5 is only compatible with BSP V1.3. The BSP versions of CP600 have to be updated to work with this Panel Builder version. Furthermore, once updated panels with BSP V1.3 are not compatible with older Panel Builder 600 versions anymore. To use old project versions, BSP has to be downgraded again.



Note: For BSP V1.3 there are only two different UN versions:

- UN60 for single core devices
- UN65 for multicore devices

2.1 BSP Versions for download

Panel	Last BSP versions	New BSP versions for PB V4.5	New BSP version for maintenance
CP600-eCo	UN60 V1.0.344	UN60 V1.3.718	UN60 V1.0.808
CP600 2nd gen	UN80 V1.0.538	UN60 V1.3.718	UN80 V1.0.809
CP600-Pro (CP6605)	UN70 V1.0.298	UN60 V1.3.718	UN70 V1.0.808
CP600-Pro (CP6607..CP6621)	UN65 V1.0.387	UN65 V1.3.717	UN65 V1.0.800
CP600 1 st gen	UN30/31	No change	No change

3 How to update from BSP V1.0 to BSP V1.3

3.1 Automatic (Recommended)



After the update you will be forced to define passwords for a user and admin.



CAUTION!

Do not turn off the device while a system component is being upgraded.

Easiest way for an update is to use the auto-updater available in the ABB library - [Link](#).

- Select the package for the panel to be updated.
- Download it to your computer.
- Unzip it to an USB stick.



CAUTION!

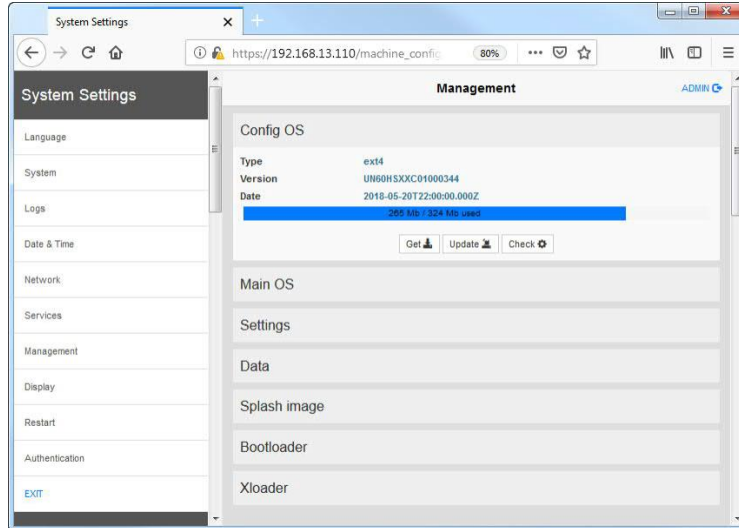
Be sure that your USB memory key has **FAT** or **FAT32 format**.

- Make sure that the files are in the root folder of the USB device and not in an additional folder.
- Plug in USB stick.
- Power on CP600.
- Follow the instructions on the display.

3.2 Manually

1. Enter “System Settings”
2. Choose “Management” section in the left menu.

The version in this screenshot can be different. It depends on your HMI type and version.



1. Expand the **Config OS** component to update and select **[Update]**.
2. On the opened dialog, click **[Browse Image]**, then browse to and select the “xxx-configos-xxx.tar.gz” file.
Click **OK**
3. Only for remote update:
Click on **[Browse MD5]** and select the “xxx-configos-xxx.tar.gz.md5” file.
4. Click **[Proceed]** to continue and wait for the upgrade to be completed.
5. After that, expand the **Main OS** component to update and select **[Update]**.
6. On the opened dialog, click **[Browse Image]**, then browse to and select the “xxx-mainos-xxx.tar.gz” file
7. Only for remote update:
Click on **[Browse MD5]** and select the “xxx-mainos-xxx.tar.gz.md5” file.
8. Click **[Proceed]** to continue and wait for the upgrade to be completed.
9. This step is optional, proceed only if Bootloader file is provided.
Expand the **Bootloader** component to update and select **[Update]**.
10. On the opened dialog, click **[Browse Image]**, then browse to and select the “xxx-bootloader-xxx.img” file.
11. Only for remote update:
Click on **[Browse MD5]** and select the “xxx-bootloader-xxx.img.md5” file.
12. Click **[Proceed]** to continue and wait for the upgrade to be completed.
13. At the end of the component update, take out the USB-key and **restart HMI** and leave it starting normally.

4 Downgrade from BSP V1.3 to BSP V1.0

4.1 Automatic (Recommended)

Easiest way for an update is to use the auto-updater available in the ABB library - [Link](#)

- Select the package for the panel to be downgraded
- Download it to your computer
- Unzip it to an USB stick



CAUTION!

Be sure that your USB memory key has **FAT** or **FAT32 format**.

- Make sure that the files are in the root folder of the USB device and not in an additional folder
- Plug in USB stick
- Power on CP600
- Follow the instructions on the display

4.2 Manually

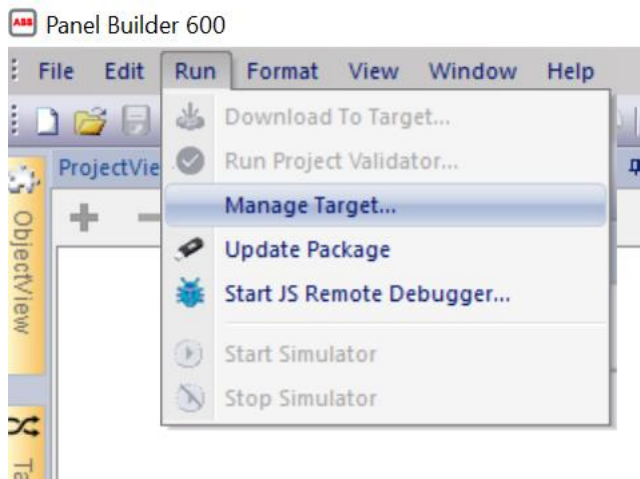


CAUTION!

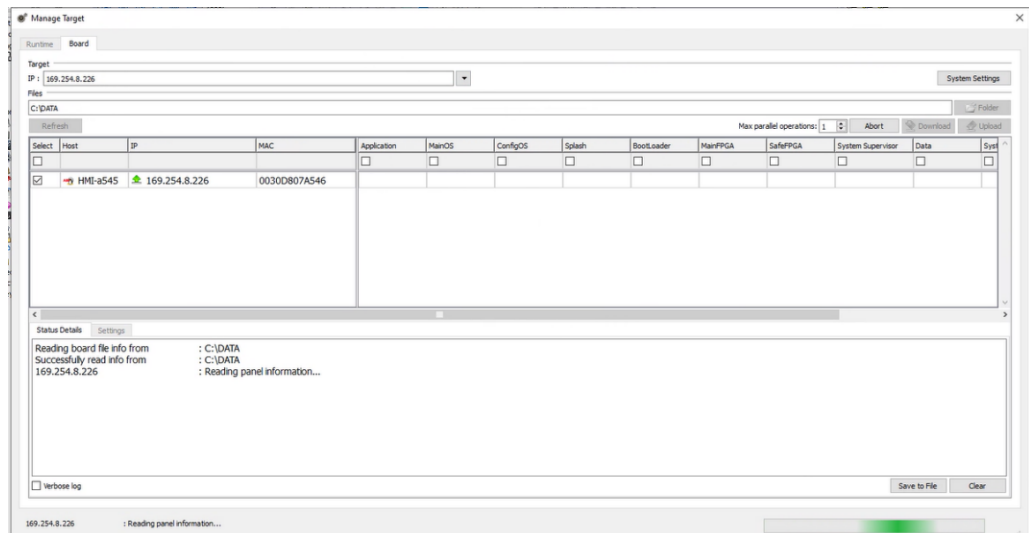
A downgrade from BSP V1.3 can just be done to a version of BSP V1.0 greater than V1.0.80x.

One possible way is described below. In general, a downgrade works the same ways as an update.

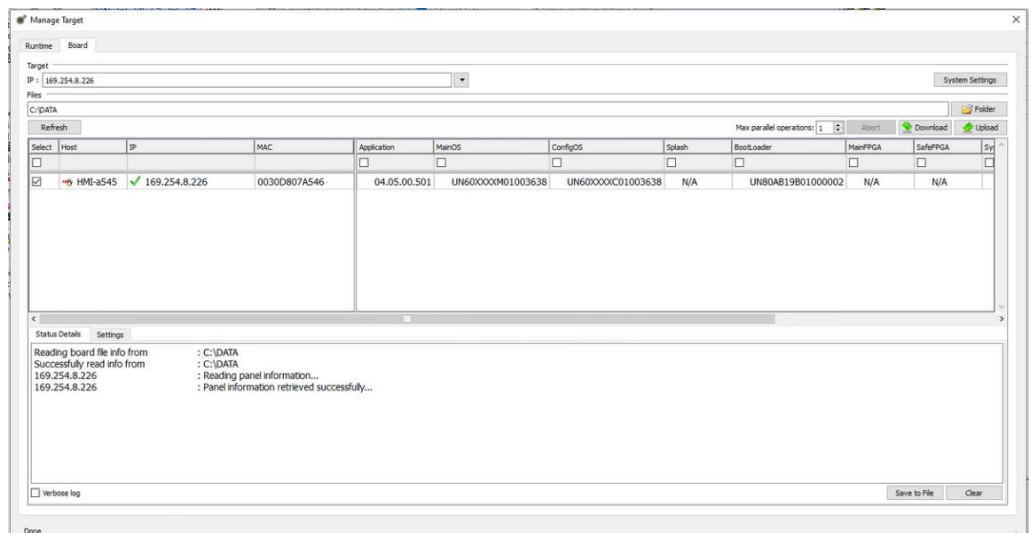
- Download corresponding BSP version from table above
- Start Panel Builder V4.0.x
- Select RUN -> Manage Target



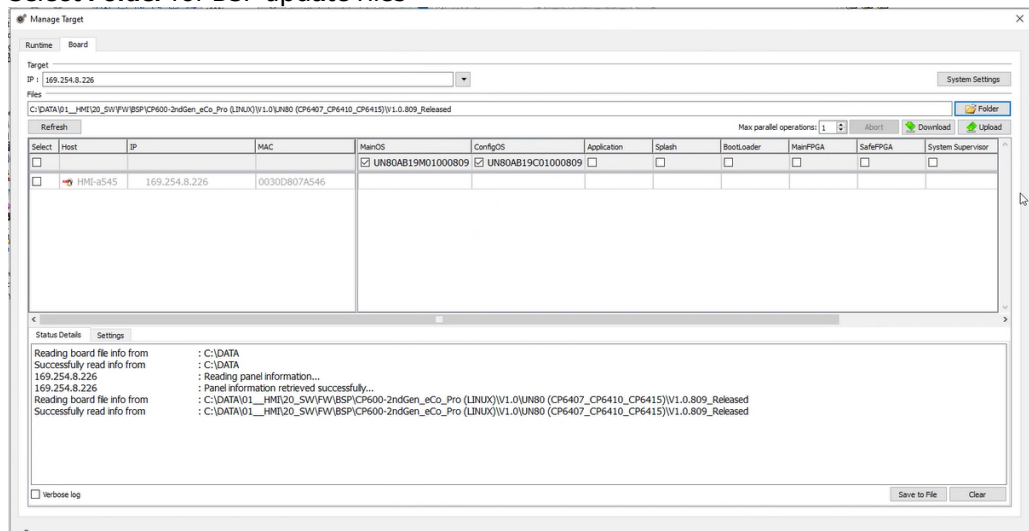
- Switch to **Board**



- Select **Target Ip** address from the HMI
- Enter admin password what was set for BSP V1.3




- Select **Folder** for BSP update files



- Select the HMI to be downgraded.
- Click download. Downgrade will be started.

5 Forgot password

If you have forgotten the admin password, you have the possibility to reset the HMI.

	<p>CAUTION!</p> <p>Note this procedure will erase the entire memory of the HMI device and any previously downloaded project will be removed.</p>
---	---

Steps to reset the device:

- Power off the HMI device.
- Power on the HMI device and when the logo appears start to "TAP TAP" the touch panel
- When "TAP TAP" is detected select "**System Settings**" on the first menu, "Default mode" on the second menu, and finally "**Device Restore**" on the third menu.



6 Downloads

6.1 Panel Builder

Title	Link for direct download from ABB library
PB610 V4.5.0.x	LINK (Install latest version via AB installer)
Plug-in protocol "Simatic S7 ETH" (S7ET-183)	LINK
Plug-in protocol "Mitsubishi iQ/Q/L ETH" for (MIQE-159)	LINK
Plug-in protocol "Mitsubishi FX ETH" for (MIFE-137)	LINK
PB610 - PDF manual	LINK

Release notes - PB610 V4.5.0 and CP600 BSP [LINK](#)
V1.3

6.2 Chromium Browser

Chromium Browser

Title	Link for direct download from ABB library
Application note Chromium Browser	LINK
Chromium 83-0.55 for CP600 with BSP V1.3	LINK
Chromium 65-0.17 for CP600 with BSP V1.0	LINK

7 General questions

Q1. Does this password setting need to be done for each individual panels?

Yes, this is a new security requirement. Each Panel need a password for user and admin. This password must follow the password policy with small and big letters and numeric values.

Q2. The customer is planning to use USB to load the project to new CP610 HMI. Will the password be transferred via USB from the original project or it need to be manually set to the new HMI?

You need to set the password on each Panel.

Q3. Is there any option to use CP610 with BSP 1.3.638 and PB610 4.5.0, as before without any password or with something like admin/admin?

No, this is not possible regarding security requirements.



ABB AG
Eppelheimer Straße 82
69123 Heidelberg, Germany
Phone: +49 62 21 701 1444
Fax: +49 62 21 701 1382
E-Mail: plc.support@de.abb.com
www.abb.com/plc

We reserve the right to make technical changes or modify the contents of this document without prior notice. With regard to purchase orders, the agreed particulars shall prevail. ABB AG does not accept any responsibility whatsoever for potential errors or possible lack of information in this document.

We reserve all rights in this document and in the subject matter and illustrations contained therein. Any reproduction, disclosure to third parties or utilization of its contents – in whole or in parts – is forbidden without prior written consent of ABB AG.
Copyright© 2023 ABB. All rights reserved