

RobotWare StampApp

The core component of StampPack



RobotWare StampApp is the core value of StampPack, a Stamping Function Package, to facilitate the automation of different variety of Stamping cells. StampApp provides a friendly environment to integrate, program and operate robotic stamping cells. Its configuration tool brings an unprecedented flexibility for stamping processes.

StampApp main features

- Its graphical assistant enables robot teaching without specific programming knowledge.
- Cell operation becomes intuitive thanks to a graphical HMI that provides clear information about the process.
- Both, HMI and programming can be adapted, through the StampApp configuration tool, to different cell set-ups and production processes.
- It provides a framework where the created configurations and programmed modules can be easily shared and reused.

RobotWare StampApp includes

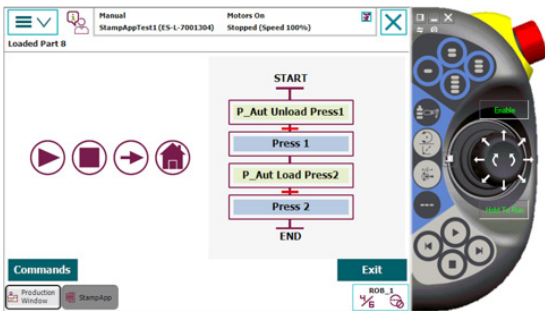
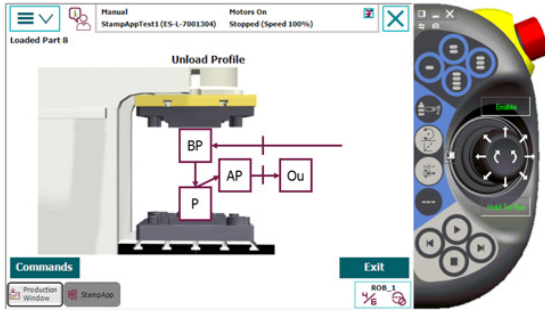
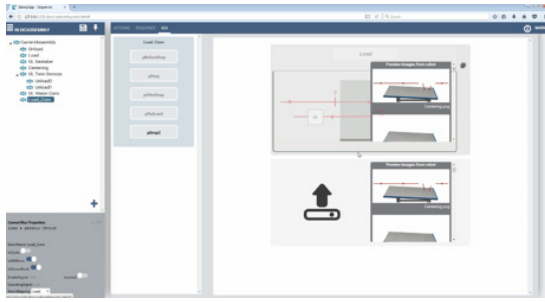
- Wizard to facilitate robot programming
- HMI to easily interact with the robot
- Basic pre-engineered interphase to connect robot with cell devices.
- Configurator to edit (if required) production processes.

StampApp, the core of StampPack

StampApp is the core of StampPack, a pre-engineered package to facilitate a quick installation and commission of different press cells configurations, as well as a friendly production operation. The StampPack has been conceived for cost and time efficient building for different variety of stamping cells and ecosystems, providing the end user with an extremely easy-to-use solution.

Just a set of pre-defined signals are needed to interface with the press(-es) and other cell devices. The result is a fully automated production cell, set up in record time and ready to start producing. Moving from manual to automatic production has never been so easy.

**StampApp programming example
Configurator tool**



Specification

Software RobotWare StampApp is a software to facilitate the automation of different variety of Stamping cells.

Friendly User Interface StampApp provides a friendly environment to integrate, program and operate robotic stamping cells. Its configuration tool brings an unprecedented flexibility for stamping processes.

Modular Structure StampApp software has a modular structure to facilitate cell upgrades and the cell devices can be easily defined through the standard Robot Installation Manager.

Main requirements

Software: Required Robot Options

709-1	DeviceNet™ M/S Single Channel Card
888-2	PROFINET Controller/Device
988-1	RW Add-In Prepared
617-1	Flexpendant Interface
623-1	Multitasking

Hardware: IO Interface

	Name	Description
Device to robot	diDevLAuth	Authorization to load device
	diDevULAuth	Authorization to unload device
	diDevConn	Device and the robot are connected
	diDevAuxAuth	Authorization for robot to perform auxiliary operation on device
Robot to device	doDevLSafe	Robot inside of the device loading
	doDevULSafe	Robot inside of the device unloading
	doDevAuxSafe	Robot inside of the device perform auxiliary operation
	doDevLConf	Robot has loaded device
	doDevULConf	Robot has unloaded device
	doDevAuxConf	Robot has finished the auxiliary operation
	doDevError	Error from robot to device