



BUYLOG SECTION 7

# Circuit Breaker Enclosures





---

# Table of contents

7-4	Enclosed Circuit Breakers
7-5	NEMA Type 1 Enclosures
7-7	NEMA Type 3R Enclosures
7-9	NEMA Type 12 Enclosures
7-10	NEMA Type 4/4X Enclosures
7-11	Hubs and Other Accessories
7-13	Dimensions and Outline Drawings
7-16	Dimensions and Knockout Drawings

## Enclosed Circuit Breakers

ABB's enclosed circuit breakers offer all the advantages and accessories of a circuit breaker packaged in an enclosure for nearly any application requiring a means of disconnect.

Ideal for a variety of locations including general purpose or rainproof surface mounting. 100% rated products are available in configurations ranging from 15 to 1200 A to meet the needs of many applications.

### Tmax® XT

The SACE®Tmax® XT molded case circuit breaker (MCCB) range helps ensure extreme performance and protection features up to 1200 amps. Tmax XT MCCBs are designed to maximize ease of use, integration and connectivity, and are built to deliver safety, reliability and quality.

### SACE FORMULA

ABB's FORMULA molded case circuit breaker line offers simplicity and quality in some of the smallest dimensions available. The protection trip unit has fixed thermal and magnetic threshold values to put the circuit breaker into service more rapidly.

### Q-Line Miniature Circuit Breakers

15 to 100A. THQL and THQC Type.  
Available in cable in cable out (lug-lug) versions.

### Thermal Magnetic E150

15 to 150A. Our industrial thermal-magnetic E150 breakers provide a proven, cost-effective solution.

### Features and Benefits

- UL /cUL certified in accordance with UL 489 / CSA 22.2 No. 5-13.
- Seismic certified in accordance with CBC-2019/IBC-2018
- Short circuit ratings equal to the installed circuit breaker
- Suitable for use as service equipment
- RELT - Reduced Energy Let-Through
- Provision for a Surge Protection Device
- Key interlocks for NEMA 1 Type Enclosures
- Complete set of factory or field installable accessories

### Enclosure types

- NEMA 1 surface, indoor
- NEMA 1 flush, indoor
- NEMA 3R, outdoor
- NEMA 12 without knockouts
- NEMA 4/4X, 316 Stainless Steel



# Circuit Breaker Enclosures

## NEMA Type 1

### Product Features

- Suitable for use as service equipment (SE) as noted.
- 60°C/75°C conductor ratings
- Short circuit ratings are equal to the rating of the installed breaker.
- Surface or Flush mounted
- Compatible with Kirk keylock accessory



Type 1, Indoor Surface or Flush Mounting

To order enclosed or accessorized circuit breakers, a configurator is available at: [empower.abb.com](http://empower.abb.com)

### NEMA Type 1

Max. Ampere Rating	Frame Type	No. of Poles	Certifications			Product Number			For 3P4W Enclosures	For Enclosures with Ground Fault Protection	
			UL SE	cUL	cUL SE <sup>1</sup>	Flush	Surface	Surface, Blank End Wall <sup>2</sup>	Neutral Product Number	Neutral Product Number <sup>3</sup>	Neutral Sensor for Ground Fault
70	THQL, TXQL, THQL-GF	1, 2, 3	•	•	-	TQL70F <sup>4</sup>	TQL70S <sup>4</sup>	-	Included	-	-
100	THQL, TXQL, THQL-GF	1, 2, 3	•	•	-	TQL100F <sup>4</sup>	TQL100S <sup>4</sup>	-	Included	-	-
125	THQL	2	•	•	-	TQL125F	TQL125S	-	Included	-	-
100	THQC, THHQC, TXQC	1, 2, 3	•	•	-	TQC100F <sup>4</sup>	TQC100S <sup>4</sup>	-	Included	-	-
250	Formula A2	2, 3	•	•	•	A2ENCL250F	A2ENCL250S	-	Included	-	-
100	THED, TED, TEB	2, 3	•	•	-	TE100F	TE100S	TE100SB	Included	-	-
150	THED, TED	2, 3	•	•	-	TE150F	-	-	Included	-	-
			•	•	•	-	TE150S	TE150SB			
125	Tmax XT1	3	•	•	•	XT1ENCL125F	XT1ENCL125S	-	TNIA225 <sup>5</sup>	-	-
125	Tmax XT2	3	•	•	•	XT2ENCL125F	XT2ENCL125S	-	TNIA225 <sup>5</sup>	TNIA250XTGF	1SDA067211R1 (10A DIP) 1SDA067212R1 (25A DIP) 1SDA081983R1 (60A DIP) 1SDA069143R1 (100A DIP) 1SDA081984R1 (125A DIP) 1SDA101971R1 (60A Touch) 1SDA101972R1 (100A Touch) 1SDA107406R1 (60A Touch V) 1SDA107407R1 (100A Touch V)
225	Tmax XT3	3	•	•	•	XT3ENCL225F	XT3ENCL225S	-	TNIA225 <sup>5</sup>	-	-

<sup>1</sup> cUL Listed - Suitable for use as service equipment.

<sup>2</sup> Enclosures with blank end walls (no Knockouts) and a feature to adjust the instantaneous setting on Spectra Circuit breakers.

<sup>3</sup> Neutral for ground fault required to mount neutral sensor in enclosure.

<sup>4</sup> 3-Pole breakers with an accessory cannot be installed in these enclosures.

<sup>5</sup> For 250A rating, use copper cable only.

(Table continued on next page.)

## Circuit Breaker Enclosures

### NEMA Type 1

#### NEMA Type 1 (continued)

Max. Ampere Rating	Frame Type	No. of Poles	Certifications			Product Number			For 3P4W Enclosures	For Enclosures with Ground Fault Protection	
			UL SE	cUL	cUL SE <sup>1</sup>	Flush	Surface	Surface, Blank End Wall <sup>2</sup>	Neutral Product Number	Neutral Product Number <sup>3</sup>	Neutral Sensor for Ground Fault
250	Tmax XT4	3	•	•	•	XT4ENCL250F	XT4ENCL250S	-	TNIA225 <sup>4</sup>	TNIA250XTGF	1SDA066975R1 (40A DIP) 1SDA081985R1 (60A DIP) 1SDA066977R1 (100A DIP) 1SDA081986R1 (150A DIP) 1SDA081987R1 (225A DIP) 1SDA066979R1 (250A DIP) 1SDA101973R1 (Touch) 1SDA107408R1 (Touch V)
400	Tmax XT5	3	•	•	•	XT5ENCL400F	XT5ENCL400S	-	TNIA400	TNIA400XTGF	1SDA101966R1 (250A DIP) 1SDA105152R1 (300A DIP) 1SDA105154R1 (400A DIP) 1SDA101974R1 (Touch) 1SDA107409R1 (Touch V)
600	Tmax XT5	3	•	•	•	XT5ENCL600F	XT5ENCL600S	-	TNIA400 TNIA600	TNIA400XTGF TNIA600XTGF	1SDA101966R1 (250A DIP) 1SDA105152R1 (300A DIP) 1SDA105154R1 (400A DIP) 1SDA105155R1 (600A DIP) 1SDA101974R1 (Touch) 1SDA107409R1 (Touch V)
800	Tmax XT6	3	•	•	•	XT6ENCL800F	XT6ENCL800S	-	TNIA800	TNIA800XTGF	1SDA105158R1 (800A)
1200	Tmax XT7	3	•	•	•	XT7ENCL1200F	XT7ENCL1200S	-	TNIA1200	TNIA1200XTGF	1SDA082134R1

<sup>1</sup> cUL Listed - Suitable for use as service equipment.

<sup>2</sup> Enclosures with blank end walls (no Knockouts) and a feature to adjust the instantaneous setting on Spectra Circuit breakers.

<sup>3</sup> Neutral for ground fault required to mount neutral sensor in enclosure.

<sup>4</sup> For 250A rating, use copper cable only.

# Circuit Breaker Enclosures

## NEMA Type 3R

### Product Features

- Suitable for use as service equipment (SE) as noted.
- 60°C/75°C conductor ratings
- Short circuit ratings are equal to the rating of the installed breaker.

To order enclosed or accessorized circuit breakers, a configurator is available at: [empower.abb.com](http://empower.abb.com)



Type 3R, Outdoor, Raintight

### NEMA Type 3R

Max. Ampere Rating	Frame Type	No. of Poles	Certifications			Product Number <sup>5</sup>	For 3P4W Enclosures	For Enclosures with Ground Fault Protection	
			UL SE	cUL	cUL SE <sup>1</sup>		Neutral Product Number	Neutral Product Number <sup>2</sup>	Neutral Sensor for Ground Fault
100	THQL, TXQL, THQL-GF	1, 2, 3		•		TQL70R <sup>3</sup>	Included	-	-
100	THQL, TXQL, THQL-GF	1, 2, 3		•		TQL100R <sup>3</sup>	Included	-	-
125	THQL	2		•		TQL125R	Included	-	-
100	THQC, THHQC, TXQC	1, 2, 3	•	•	•	TQC100R <sup>3</sup>	Included	-	-
200	Formula A2	2	•	•	•	A2ENCL200NR	Included	-	-
250	Formula A2	2, 3	•	•	•	A2ENCL250R	Included	-	-
100	THED, TED, TEB	2, 3	•	•	•	TE100R	Included	-	-
150	THED, TED	2, 3	•	•	•	TE150R	Included	-	-
125	Tmax XT1	3	•	•	•	XT1ENCL125R	TNIA225 <sup>4</sup>	-	-
125	Tmax XT2	3	•	•	•	XT2ENCL125R	TNIA225 <sup>4</sup>	TNIA250XTGF	1SDA067211R1 (10A DIP) 1SDA067212R1 (25A DIP) 1SDA081983R1 (60A DIP) 1SDA069143R1 (100A DIP) 1SDA081984R1 (125A DIP) 1SDA101971R1 (60A Touch) 1SDA101972R1 (100A Touch) 1SDA107406R1 (60A Touch V) 1SDA107407R1 (100A Touch V)
225	Tmax XT3	3	•	•	•	XT3ENCL225R	TNIA225 <sup>4</sup>	-	-
250	Tmax XT4	3	•	•	•	XT4ENCL250R	TNIA225 <sup>4</sup>	TNIA250XTGF	1SDA066975R1 (40A DIP) 1SDA081985R1 (60A DIP) 1SDA066977R1 (100A DIP) 1SDA081986R1 (150A DIP) 1SDA081987R1 (225A DIP) 1SDA066979R1 (250A DIP) 1SDA101973R1 (Touch) 1SDA107408R1 (Touch V)
600	Tmax XT5	3	•	•	•	XT5ENCL600R	TNIA400 TNIA600	TNIA400XTGF TNIA600XTGF	1SDA101966R1 (250A DIP) 1SDA105152R1 (300A DIP) 1SDA105154R1 (400A DIP) 1SDA105155R1 (600A DIP) 1SDA101974R1 (Touch) 1SDA107409R1 (Touch V)
800	Tmax XT6	3	•	•	•	XT6ENCL800R	TNIA800	TNIA800XTGF	1SDA107671R1 (600A) 1SDA105158R1 (800A)
1200	Tmax XT7	3	•	•	•	XT7ENCL1200R	TNIA1200	TNIA1200XTGF	1SDA082134R1

<sup>1</sup> cUL Listed - Suitable for use as service equipment.

<sup>2</sup> Neutral for ground fault required to mount neutral sensor in enclosure.

<sup>3</sup> 3-Pole breakers with an accessory can not be installed in these enclosures.

<sup>4</sup> For 250A rating, use copper cable only.

<sup>5</sup> 100-250A devices have removable closing cap. Larger ampere devices require field cut openings. Order hubs separately. See page 7-11.

## Circuit Breaker Enclosures

### NEMA Type 3R

#### NEMA Type 3R - Factory installed circuit breaker

Max. Ampere Rating	Frame Type	No. of Poles	Certifications			Product Number	Neutral included
			UL SE	cUL	cUL SE		
100	THQL	2		•		TQL100RE	•
125	THQL	2		•		TQL125RE	•
150	THQMV	2	•	•	•	THQMV150NRE	•
150	Formula A2	2	•	•	•	A2A200NRW150ECB	•
200	THQMV	2	•	•	•	THQMV200NRE	•
200	Formula A2	2	•	•	•	A2A200NRW200ECB	•



# Circuit Breaker Enclosures

## NEMA Type 12

### Product Features

- Suitable for use as service equipment (SE) as noted.
- 60°C/75°C conductor ratings
- Short circuit ratings are equal to the rating of the installed breaker.

To order enclosed or accessorized circuit breakers, a configurator is available at: [empower.abb.com](http://empower.abb.com)



Type 12,  
Rotary Handle Integral with Breaker

### NEMA Type 12

Max. Ampere Rating	Frame Type	No. of Poles	Certifications			Product Number		For 3P4W Enclosures	For Enclosures with Ground Fault Protection	
			UL SE	cUL	cUL SE <sup>1</sup>	With Knock Outs	Without Knock Outs	Neutral Product Number	Neutral Product Number <sup>2</sup>	Neutral Sensor for Ground Fault
100	THED, TED, TEB	3	•	•	•	TE100D	TE100J	Included	-	-
125	Tmax XT1	3	•	•	•	-	XT1ENCL125J	TNIA225 <sup>3</sup>	-	-
125	Tmax XT2	3	•	•	•	-	XT2ENCL125J	TNIA225 <sup>3</sup>	TNIA250XTGF	1SDA067211R1 (10A DIP) 1SDA067212R1 (25A DIP) 1SDA081983R1 (60A DIP) 1SDA069143R1 (100A DIP) 1SDA081984R1 (125A DIP) 1SDA101971R1 (60A Touch) 1SDA101972R1 (100A Touch) 1SDA107406R1 (60A Touch V) 1SDA107407R1 (100A Touch V)
225	Tmax XT3	3	•	•	•	-	XT3ENCL225J	TNIA225 <sup>3</sup>	-	-
250	Tmax XT4	3	•	•	•	-	XT4ENCL250J	TNIA225 <sup>3</sup>	TNIA250XTGF	1SDA066975R1 (40A DIP) 1SDA081985R1 (60A DIP) 1SDA066977R1 (100A DIP) 1SDA081986R1 (150A DIP) 1SDA081987R1 (225A DIP) 1SDA066979R1 (250A DIP) 1SDA101973R1 (Touch) 1SDA107408R1 (Touch V)
600	Tmax XT5	3	•	•	•	-	XT5ENCL600J	TNIA400 TNIA600	TNIA400XTGF TNIA600XTGF	1SDA101966R1 (250A DIP) 1SDA105152R1 (300A DIP) 1SDA105154R1 (400A DIP) 1SDA105155R1 (600A DIP) 1SDA101974R1 (Touch) 1SDA107409R1 (Touch V)
800	Tmax XT6	3	•	•	•	-	XT6ENCL800J	TNIA800	TNIA800XTGF	1SDA107671R1 (600A) 1SDA105158R1 (800A)
1200	Tmax XT7	3	•	•	•	-	XT7ENCL1200J	TNIA1200	TNIA1200XTGF	1SDA082134R1

<sup>1</sup> cUL Listed - Suitable for use as service equipment.  
<sup>2</sup> Neutral for ground fault required to mount neutral sensor in enclosure.  
<sup>3</sup> For 250A rating, use copper cable only.

## Circuit Breaker Enclosures

### NEMA Type 4/4X

#### Product Features

- Suitable for use as service equipment (SE) as noted.
- 60°C/75°C conductor ratings
- Short circuit ratings are equal to the rating of the installed breaker.
- 316 Stainless Steel

To order enclosed or accessorized circuit breakers, a configurator is available at: [empower.abb.com](http://empower.abb.com)



Type 4/4X,  
Stainless Steel, Watertight, Dust Tight

#### NEMA Type 4/4X

Max. Ampere Rating	Frame Type	No. of Poles	Certifications			Product Number	For 3P4W Enclosures	For Enclosures with Ground Fault Protection	
			UL SE	cUL	cUL SE <sup>1</sup>		Neutral Product Number	Neutral Product Number <sup>2</sup>	Neutral Sensor for Ground Fault
100	THED, TED, TEB	2, 3	•	•	•	TE100CS	TNI100	-	-
125	Tmax XT1	3	•	•	•	XT1ENCL125CS	TNIA225 <sup>3</sup>	-	-
125	Tmax XT2	3	•	•	•	XT2ENCL125CS	TNIA225 <sup>3</sup>	TNIA250XTGF	1SDA067211R1 (10A DIP) 1SDA067212R1 (25A DIP) 1SDA081983R1 (60A DIP) 1SDA069143R1 (100A DIP) 1SDA081984R1 (125A DIP) 1SDA101971R1 (60A Touch) 1SDA101972R1 (100A Touch) 1SDA107406R1 (60A Touch V) 1SDA107407R1 (100A Touch V)
225	Tmax XT3	3	•	•	•	XT3ENCL225CS	TNIA225 <sup>3</sup>	-	-
250	Tmax XT4	3	•	•	•	XT4ENCL250CS	TNIA225 <sup>3</sup>	TNIA250XTGF	1SDA066975R1 (40A DIP) 1SDA081985R1 (60A DIP) 1SDA066977R1 (100A DIP) 1SDA081986R1 (150A DIP) 1SDA081987R1 (225A DIP) 1SDA066979R1 (250A DIP) 1SDA101973R1 (Touch) 1SDA107408R1 (Touch V)
600	Tmax XT5	3	•	•	•	XT5ENCL600CS	TNIA400 TNIA600	TNIA400XTGF TNIA600XTGF	1SDA101966R1 (250A DIP) 1SDA105152R1 (300A DIP) 1SDA105154R1 (400A DIP) 1SDA105155R1 (600A DIP) 1SDA101974R1 (Touch) 1SDA107409R1 (Touch V)
800	Tmax XT6	3	•	•	•	XT6ENCL800CS	TNIA800	TNIA800XTGF	1SDA107671R1 (600A) 1SDA105158R1 (800A)
1200	Tmax XT7	3	•	•	•	XT7ENCL1200CS	TNIA1200	TNIA1200XTGF	1SDA082134R1

<sup>1</sup> cUL Listed - Suitable for use as service equipment.

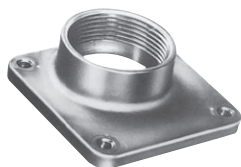
<sup>2</sup> Neutral for ground fault required to mount neutral sensor in enclosure.

<sup>3</sup> For 250A rating, use copper cable only.

# Circuit Breaker Enclosures

## Hubs and Other Accessories

### Universal Raintight Hubs, Aluminum



TC150

For outdoor enclosures that have removable closing caps.

Nominal Conduit Diameter (in.)	Product Number
3/4	TC75
1	TC100
1 1/4	TC125
1 1/2	TC150
2	TC200
2 1/2	TC250
3	TC300
Closing Cap	TCCP

### Stainless Steel Cover

For flush mounted Type 1 circuit breaker enclosures, field installed only.

For Use with	Product Number
TE100F	TE100FSS

### Insulated Groundable Neutrals

Max. Ampere Rating	Lug Wire Size (Cu-Al) AWG/kcmil	Standard Package	Product Number
100	(1) 14-1/0 Cu or (1) 12-1/0 Al	1	TNI100
250	(1) 1-300	1	TNIA225 <sup>1</sup>
250	(1) 1-300	1	TNIA250EGF <sup>1</sup>
250	(1) 1-300	1	TNIA250XTGF <sup>2</sup>
400	(2) 1/0-250 or (1) 4-600	1	TNIA400
400	(2) 1/0-250 or (1) 4-600	1	TNIA400XTGF <sup>2</sup>
600	(2) 2/0-500	1	TNIA600
600	(2) 2/0-500	1	TNIA600XTGF <sup>2</sup>
800	(3) 250-500	1	TNIA800
800	(3) 250-500	1	TNIA800XTGF <sup>2</sup>
1200	(4) 250-350 Cu or (4) 250-500 Al	1	TNIA1200
1200	(4) 250-350 Cu or (4) 250-500 Al	1	TNIA1200XTGF <sup>2</sup>
1200	(4) 250-400 Cu Only	1	TNIAC1200

<sup>1</sup> For 250A rating, use copper cable only.

<sup>2</sup> Neutral required for Tmax XT Circuit Breakers with ground fault.

### Ground Kits

Ampere Rating	Product Number
70-125 amp	TGL1
150-400 amp	(1) TGL1 plus (1) TGL20
600-1200 amp	TGL6

## Circuit Breaker Enclosures

### Hubs and Other Accessories

#### Surge Protective Devices

The SPD module is a plug-in accessory to be installed on the outer left-hand surface of the enclosure for Tmax XT enclosures for frames XT1 - XT7.

Neutral Kits with provision for SPD connection to neutrals

Kit Catalog Number	Compatibility with Neutrals
ECBSPDMTGKIT	TNIA225
	TNIA400
	TNIA400XTGF
	TNIA600
	TNIA600XTGF
	TNIA800
	TNIA800XTGF
	TNIA1200
	TNIA1200XTGF
	TNIA1200XL
TNIA1200XTGFXL	
No provision kit required	TNIA250XTGF

#### KIRK® Lock kit

Key interlock provisions may be installed on Tmax XT, NEMA 1 enclosures.

Breaker Frame	Interlock Bracket Kit Catalog Number	KIRK® Lock Catalog Number
XT1, XT2, XT3, XT4	ECBKEYINTERLOCK	KFL003710TH
XT5, XT6, XT7		SS-220220

# Circuit Breaker Enclosures

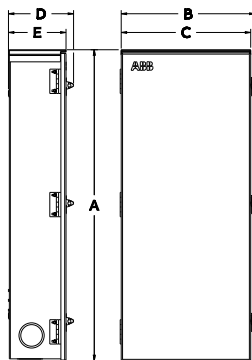
## Dimensions and Outline Drawings

### NEMA Type 1 Enclosures

Product Number	Dimension <sup>1</sup> A (in.)	Dimension <sup>1</sup> B (in.)	Dimension <sup>1</sup> C (in.)	Dimension <sup>1</sup> D (in.)	Dimension <sup>1</sup> E (in.)	Outline Drawing No.
TE100F, S, SB <sup>2</sup>	17.000	-	7.875	5.500	4.750	208C2891SH3
XT1ENCL125F, S	19.440	9.740	9.740	6.260	5.490	15QC930048D0201
TE150F, S, SB <sup>2</sup>	26.438	8.875	8.875	6.188	5.500	139C5497SH1
XT2ENCL125F, S	19.440	9.740	9.740	6.260	5.490	15QC930049D0201
XT3ENCL225F, S	31.240	10.500	10.500	6.260	5.490	15QC930050D0201
XT4ENCL250F, S	31.240	10.500	10.500	6.260	5.490	15QC930051D0201
XT5ENCL600F, S	43.965	17.180	17.180	9.120	8.350	15QC930052D0201
XT6ENCL800F, S	45.650	21.330	22.320	6.890	7.510	15QC930053D0201
XT7ENCL1200F, S	48.640	21.920	21.920	8.800	9.420	15QC930054D0201
A2ENCL250F, S	31.240	10.500	10.500	6.260	5.490	15QC930055D0201
TQL70F, S	12.875	-	5.750	4.750	4.063	208C2817SH1
TQL100F, S	15.250	-	6.875	4.750	4.000	139C5651SH2
TQL125F, S	16.875	-	6.750	5.188	4.500	139C5651SH2
TQC100F, S	15.250	-	6.875	4.750	4.000	139C5651SH1

<sup>1</sup> Flush front extends approximately 0.625-inch beyond each side.

<sup>2</sup> NEMA Type 1 Enclosure Product Numbers ending in "SB" contain blank end walls (No Knockouts).



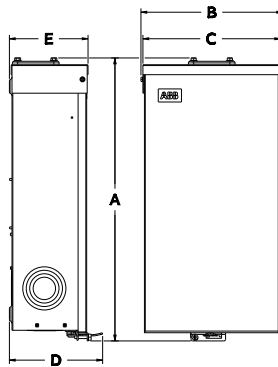
NEMA Type 1  
 Suffix F (Flush)  
 Suffix S (Surface)

## Circuit Breaker Enclosures

### Dimensions and Outline Drawings

#### NEMA Type 3R Enclosures

Product Number	Dimension A (in.)	Dimension B (in.)	Dimension C (in.)	Dimension D (in.)	Dimension E (in.)	Outline Drawing No.
TE100R	18.056	7.875	7.500	5.688	5.375	139C5652SH1
TE150R	27.438	10.250	10.000	6.250	5.500	139C5498SH1
XT1ENCL125R	20.470	10.240	9.960	6.744	5.688	1SQC930056D0201
XT2ENCL125R	20.470	10.240	9.960	6.744	5.688	1SQC930056D0201
XT3ENCL225R	32.216	10.952	10.720	6.744	5.688	1SQC930057D0201
XT4ENCL250R	32.216	10.952	10.720	6.744	5.688	1SQC930057D0201
XT5ENCL600R	43.186	18.611	18.030	9.040	7.980	1SQC930058D0201
XT6ENCL800R	45.200	21.500	21.500	8.900	8.190	1SQC930059D0201
XT7ENCL1200R	48.190	23.220	22.530	11.920	10.870	1SQC930060D0201
TQC100R	15.750	7.875	7.500	5.688	5.375	139C5652SH1
A2ENCL200NR	20.550	8.200	7.960	5.810	4.640	1SQC930128D0201
A2ENCL250R	32.210	10.260	10.720	6.560	5.560	1SQC930057D0201
A2A200NRW150ECB	20.550	8.200	7.960	5.810	4.640	1SQC930128D0201
A2A200NRW200ECB	20.550	8.200	7.960	5.810	4.640	1SQC930128D0201
TQL70R	17.000	-	6.875	5.938	5.000	208C3061SH1
TQL100R, RE	17.000	7.250	6.875	6.000	5.000	139C5652SH1
TQL125R	18.313	7.688	7.500	6.313	5.188	139C5652SH1
THQMV150NRE	18.813	9.500	9.313	5.500	4.875	208C3061SH2
THQMV200NRE	18.813	9.500	9.313	5.500	4.875	208C3061SH2



NEMA Type 3R  
Outdoor Enclosure

# Circuit Breaker Enclosures

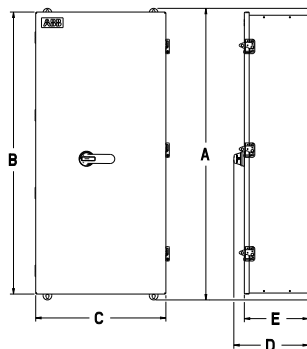
## Dimensions and Outline Drawings

### NEMA Type 4/4X Enclosures

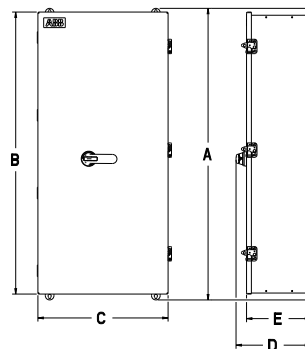
Product Number	Dimension A (in.)	Dimension B (in.)	Dimension C (in.)	Dimension D (in.)	Dimension E (in.)	Outline Drawing No.
TE100CS	19.250	17.250	8.500	7.000	5.000	139C5654SH1
XT1ENCL125CS	21.240	19.870	10.130	10.090	9.130	1SQC930114D0201
XT2ENCL125CS	21.240	19.870	10.030	9.990	9.130	1SQC930115D0201
XT3ENCL225CS	34.500	32.760	10.670	10.000	9.120	1SQC930116D0201
XT4ENCL250CS	34.500	32.760	10.670	10.000	9.120	1SQC930117D0201
XT5ENCL600CS	44.240	42.770	18.030	10.790	9.880	1SQC930125D0201
XT6ENCL800CS	50.620	49.870	22.600	12.950	11.140	1SQC930126D0201
XT7ENCL1200CS	50.620	49.870	22.600	12.950	11.140	1SQC930127D0201

### NEMA Type 12 Enclosures

Product Number	Dimension A (in.)	Dimension B (in.)	Dimension C (in.)	Dimension D (in.)	Dimension E (in.)	Outline Drawing No.
TE100J, D	19.250	17.875	7.920	8.660	5.750	139C5653SH1
XT1ENCL125J	21.240	19.870	10.130	10.090	9.130	1SQC930114D0201
XT2ENCL125J	21.240	19.870	10.030	9.990	9.130	1SQC930115D0201
XT3ENCL225J	34.500	32.760	10.670	10.000	9.120	1SQC930116D0201
XT4ENCL250J	34.500	32.760	10.670	10.000	9.120	1SQC930117D0201
XT5ENCL600J	44.240	42.770	18.030	10.790	9.880	1SQC930125D0201
XT6ENCL800J	50.620	49.870	22.600	12.950	11.140	1SQC930126D0201
XT7ENCL1200J	50.620	49.870	22.600	12.950	11.140	1SQC930127D0201



NEMA Type 4/4X  
Stainless Steel



NEMA Type 12  
Suffix D (with KOs)  
Suffix J (without KOs)

# Circuit Breaker Enclosures

## Dimensions and Knockout Drawings

Symbol	A	⊕	B	C	D	E	F	G	H	I	J	K	L	M	N	P	Q	R	S	T	U	V	W	X	Y	Z
	3/32	-	3/8	-	-	-	-	-	-	3/8	-	-	-	-	-	-	-	-	-	-	-	-	-	-	-	-
	-	1/2	1/2	1/2	-	1/2	-	1/2	-	1/2	-	-	-	-	-	-	-	-	-	-	-	-	-	-	-	-
	-	-	3/4	3/4	3/4	3/4	3/4	3/4	3/4	3/4	3/4	-	-	-	-	3/4	-	-	-	-	-	-	3/4	-	-	-
	-	-	-	-	-	1	1	1	1	1	1	1	1	1	1	1	1	1	1	1	1	1	1	1	1	1
Conduit Size (Inches)	-	-	-	-	-	-	-	1 1/4	1 1/4	1 1/4	1 1/4	1 1/4	1 1/4	1 1/4	1 1/4	1 1/4	-	-	1 1/4	-	-	1 1/4	-	-	-	-
	-	-	-	-	-	-	-	-	-	1 1/2	1 1/2	1 1/2	1 1/2	1 1/2	1 1/2	1 1/2	1 1/2	1 1/2	1 1/2	1 1/2	1 1/2	1 1/2	1 1/2	1 1/2	1 1/2	
	-	-	-	-	-	-	-	-	-	-	-	-	2	2	2	2	2	2	2	2	2	2	2	2	2	2
	-	-	-	-	-	-	-	-	-	-	-	-	-	-	2 1/2	2 1/2	2 1/2	2 1/2	2 1/2	2 1/2	2 1/2	2 1/2	2 1/2	2 1/2	2 1/2	
	-	-	-	-	-	-	-	-	-	-	-	-	-	-	-	-	-	3	3	3	3	3	3	3	3	
	-	-	-	-	-	-	-	-	-	-	-	-	-	-	-	-	-	-	-	-	-	3 1/2	3 1/2	3 1/2	3 1/2	
	-	-	-	-	-	-	-	-	-	-	-	-	-	-	-	-	-	-	-	-	-	-	-	-	4	

### Circuit Breaker Enclosures

Product Number	Knockout Figure No.
A2ENCL200NR	8
A2ENCL250F, S	4
A2ENCL250R	7
TE100F, S	1
TE100R	10
TE100F, S	4
TE150R	7
TQC100F, S	2
TQC100R	10
TQD225NR	8
TQD225R	7
TQL100F, S	2
TQL100R	10
XT1ENCL125F, S	4
XT1ENCL125R	7
XT2ENCL125F, S	4
XT2ENCL125R	7
XT3ENCL225F, S	4
XT3ENCL225R	7
XT4ENCL250F, S	4
XT4ENCL250R	7
XT5ENCL600F, S	3
XT5ENCL600R	9
XT6ENCL800F, S	3
XT6ENCL800R	9
XT7ENCL1200F, S	No KO
XT7ENCL1200R	No KO

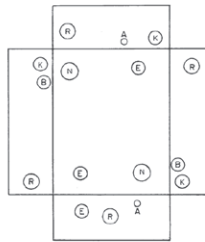


Figure 1

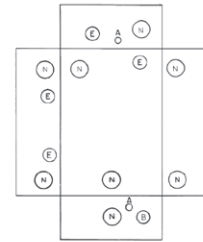


Figure 2

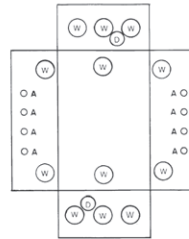


Figure 3

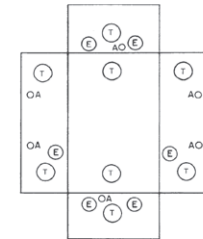


Figure 4

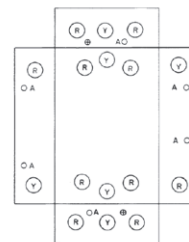


Figure 5

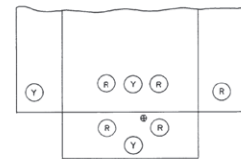


Figure 6

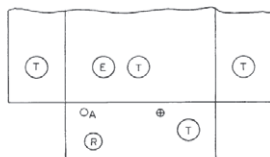


Figure 7



Figure 8

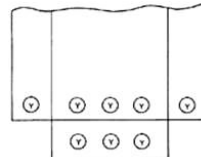


Figure 9

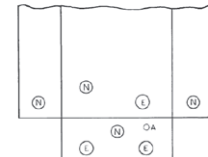


Figure 10