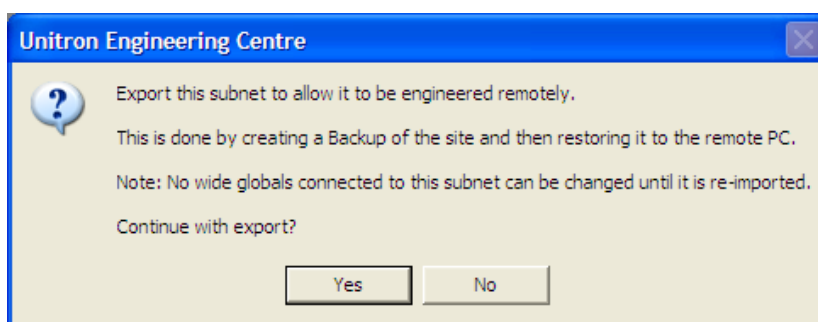

HOW TO REMOTELY ENGINEER A SUBNET WITH GLOBALS

This document details the issues involved in engineering remote Sites that include Wide Globals.

1. Export Subnet

To export a subnet for editing on a separate PC, you must select 'Export Subnet...' from the context menu on the relevant Comms Controller in the Site Tree.

You will be asked to confirm the export:



If you select 'Yes', a flag will be added to the site.ini file that marks Wide Globals as **read-only** on the selected subnet, and CCBackup will automatically be launched to allow you to back up the site and transfer it to the remote PC.

2. Modifying globals on the exported Site

As the read only flag is added before the backup, it will be present both on the master PC and on the remote PC to which the backup is restored. This flag prevents any action that **adds, edits or deletes** a **Wide Global**, or one of its properties, on the selected subnet.

All other Global actions, such as modifying Local or Smart Globals, or adding or deleting un-connected Globals, are not restricted.

On both the master and remote PCs, users are free to change Wide Globals on subnets other than the exported subnet.

3. Importing modifications

Once engineering of the exported subnet is complete on the remote PC, you must backup the site, and copy it to the master PC.

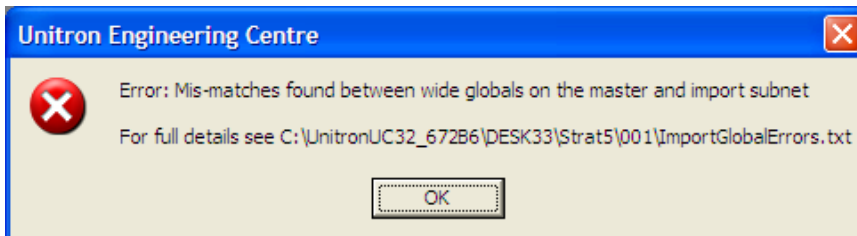
On the master PC, select 'Import Subnet From...' from the context menu on the relevant Comms Controller in the site tree.

Note: It is possible to import a subnet even if the 'export' flag has not been set.

When importing, no differences in Wide Globals are permitted. This includes Global default values and names.

This is because it would not be possible to automatically determine which version should be used, the version on the master PC or the one on the remote PC.

If differences in Wide Globals are found, the import will be aborted and the following dialog will be displayed:



The `ImportGlobalErrors.txt` file referenced in the dialog will list the Wide Globals that caused the conflict(s) on both the master and remote PC.

Edit either the remote PC or the master PC manually so that the differences are eliminated, and run the import procedure again.