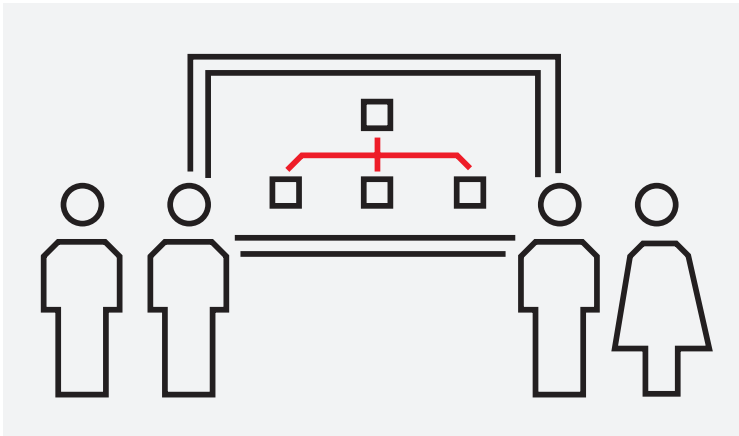


COURSE DESCRIPTION

S320

S+ Operations (Operator)



The trainees will learn the professional handling of S+ Operations HMI (Human Machine Interface) with focus on operation and observation and how to interpret and react to S+ Operations based messages.

Learning objectives

Upon completion of this course, and depending on the specific training blocks that are selected, students will be able to:

- Understand S+ Operations system architecture
- Log on to an operator workplace
- Explore the operator workplace using the S+ Operations navigation tools
- Call up process graphics
- Monitor and control process objects by using faceplates
- Work with trend displays
- Handle alarm and event lists
- Navigate in the process using various display types
- Create and modify standard displays, such as group display and trend display
- Use the search tool

Participant profile

The training is designed for operators.

Prerequisites

Trainees should know the fundamentals of working with control systems and have basic knowledge of Microsoft operating systems, loop-control technology and data processing.

Topics/Training Blocks

- System architecture
- Users and Groups
- Operator workplace
- Graphic displays and faceplates
- History Server
- Trend displays and trend groups
- Alarm and event lists

Course type and methods

This is an instructor led course with interactive classroom discussions and associated lab exercises. Approximately 50% of the course entails hands-on lab activities.

Duration

2 1/2 days

Agenda

Day 1	Day 2	Day 3
Course overview	Graphic displays and faceplates	Alarm and event lists
System architecture	History server	Hands-on lab: Exercises
User and Groups	Trend displays and trend groups	
Operator workplace	Hands-on lab: Exercises	
Hands-on lab: Exercises		

ABB

Power Generation Training

Email: IT-powergeneration.training@abb.com

The information contained in this document is for general information purposes only. While ABB strives to keep the information up to date and correct, it makes no representations or warranties of any kind, express or implied, about the completeness, accuracy, reliability, suitability or availability with respect to the

information, products, services, or related graphics contained in the document for any purpose. Any reliance placed on such information is therefore strictly at your own risk. ABB reserves the right to discontinue any product or service at any time.
© Copyright 2018 ABB. All rights reserved.