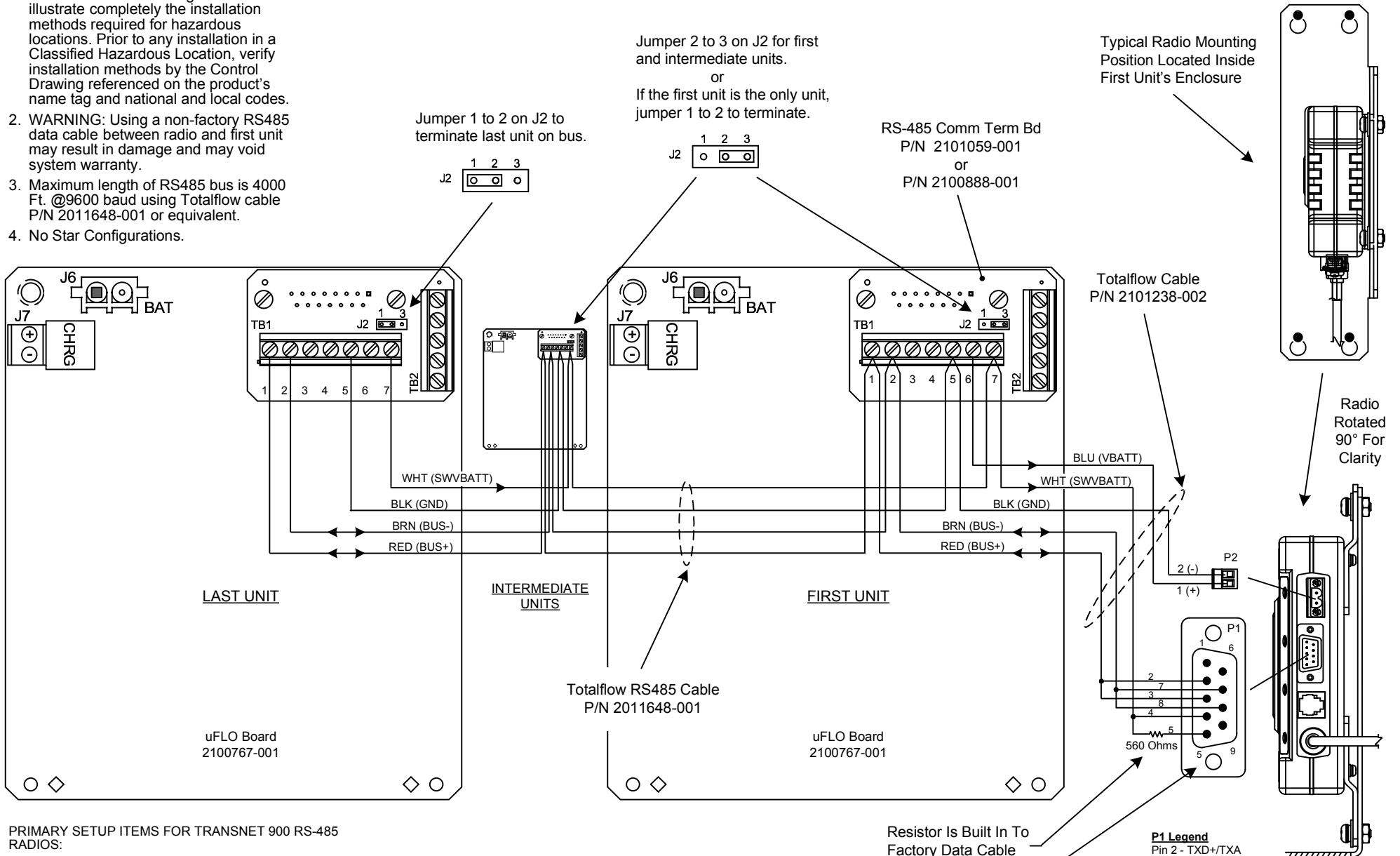


NOTES:

1. **WARNING:** This drawing does not illustrate completely the installation methods required for hazardous locations. Prior to any installation in a Classified Hazardous Location, verify installation methods by the Control Drawing referenced on the product's name tag and national and local codes.
2. **WARNING:** Using a non-factory RS485 data cable between radio and first unit may result in damage and may void system warranty.
3. Maximum length of RS485 bus is 4000 Ft. @9600 baud using Totalflow cable P/N 2011648-001 or equivalent.
4. No Star Configurations.



PRIMARY SETUP ITEMS FOR TRANSNET 900 RS-485 RADIOS:

1. *Mode R.*
2. *ADDR XXXX* - where (xxxx) is radio's address, which is also the same as the Master Radio's Address.
3. *SLEEP ON.*
4. *Port RS485.*
5. *BAUD 9600 8,n,1* - (other baud rates and parity can be used but needs to match the flow computer).

Note: Typically, all other setup items can be left in their default state.

REF: 2101240-WI

ABB	TOTALFLOW Products	ACTION	DOC TYPE	TITLE	DWG NO.	REV	SHEET
		D20142	UD	UFLO W/ COMM TERM BD TO MDS TRANSNET 900 RADIO (RS-485)	2101655	AB	1 OF 1