

Catalog No. Qty

## TGRK22 1 R-Class Fuse Kit

For Rejecting Fuses Other Than Class "R"

### INSTALLATION INSTRUCTIONS:

1. Remove and discard the load end fuse clips from the load base assembly.
  2. Attach the fuse clip and connector assembly to the load base by inserting drive rivet with screwdriver or similar tool as shown. Torque lug screw to 30-40in-lbs.
- ⚠ CAUTION:** Turn off power before working inside this equipment.

**Note:** For two pole devices omit third rejector.

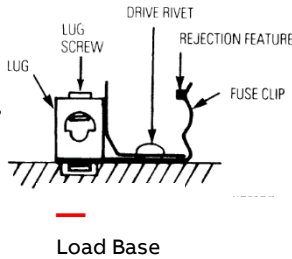


ABB Inc. 305 Gregson Drive Cary, NC 27511  
Electrification.us.abb.com

15QC920024M0201\_Rev C, GEJ7454 Dec 2023

Catalog No. Qty

## TGRK22 1 R-Class Fuse Kit

For Rejecting Fuses Other Than Class "R"

### INSTALLATION INSTRUCTIONS:

1. Remove and discard the load end fuse clips from the load base assembly.
  2. Attach the fuse clip and connector assembly to the load base by inserting drive rivet with screwdriver or similar tool as shown. Torque lug screw to 30-40in-lbs.
- ⚠ CAUTION:** Turn off power before working inside this equipment.

**Note:** For two pole devices omit third rejector.

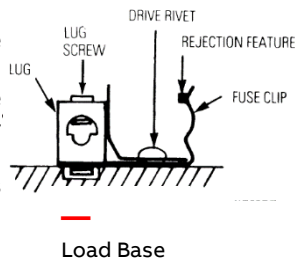


ABB Inc. 305 Gregson Drive Cary, NC 27511  
Electrification.us.abb.com

15QC920024M0201\_Rev C, GEJ7454 Dec 2023

Catalog No. Qty

## TGRK22 1 R-Class Fuse Kit

For Rejecting Fuses Other Than Class "R"

### INSTALLATION INSTRUCTIONS:

1. Remove and discard the load end fuse clips from the load base assembly.
  2. Attach the fuse clip and connector assembly to the load base by inserting drive rivet with screwdriver or similar tool as shown. Torque lug screw to 30-40in-lbs.
- ⚠ CAUTION:** Turn off power before working inside this equipment.

**Note:** For two pole devices omit third rejector.

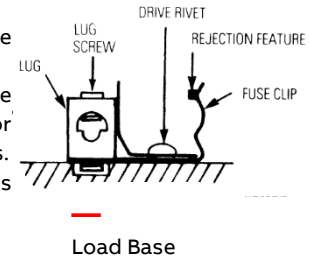


ABB Inc. 305 Gregson Drive Cary, NC 27511  
Electrification.us.abb.com

15QC920024M0201\_Rev C, GEJ7454 Dec 2023

Catalog No. Qty

## TGRK22 1 R-Class Fuse Kit

For Rejecting Fuses Other Than Class "R"

### INSTALLATION INSTRUCTIONS:

1. Remove and discard the load end fuse clips from the load base assembly.
  2. Attach the fuse clip and connector assembly to the load base by inserting drive rivet with screwdriver or similar tool as shown. Torque lug screw to 30-40in-lbs.
- ⚠ CAUTION:** Turn off power before working inside this equipment.

**Note:** For two pole devices omit third rejector.

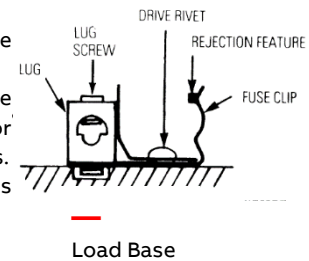


ABB Inc. 305 Gregson Drive Cary, NC 27511  
Electrification.us.abb.com

15QC920024M0201\_Rev C, GEJ7454 Dec 2023