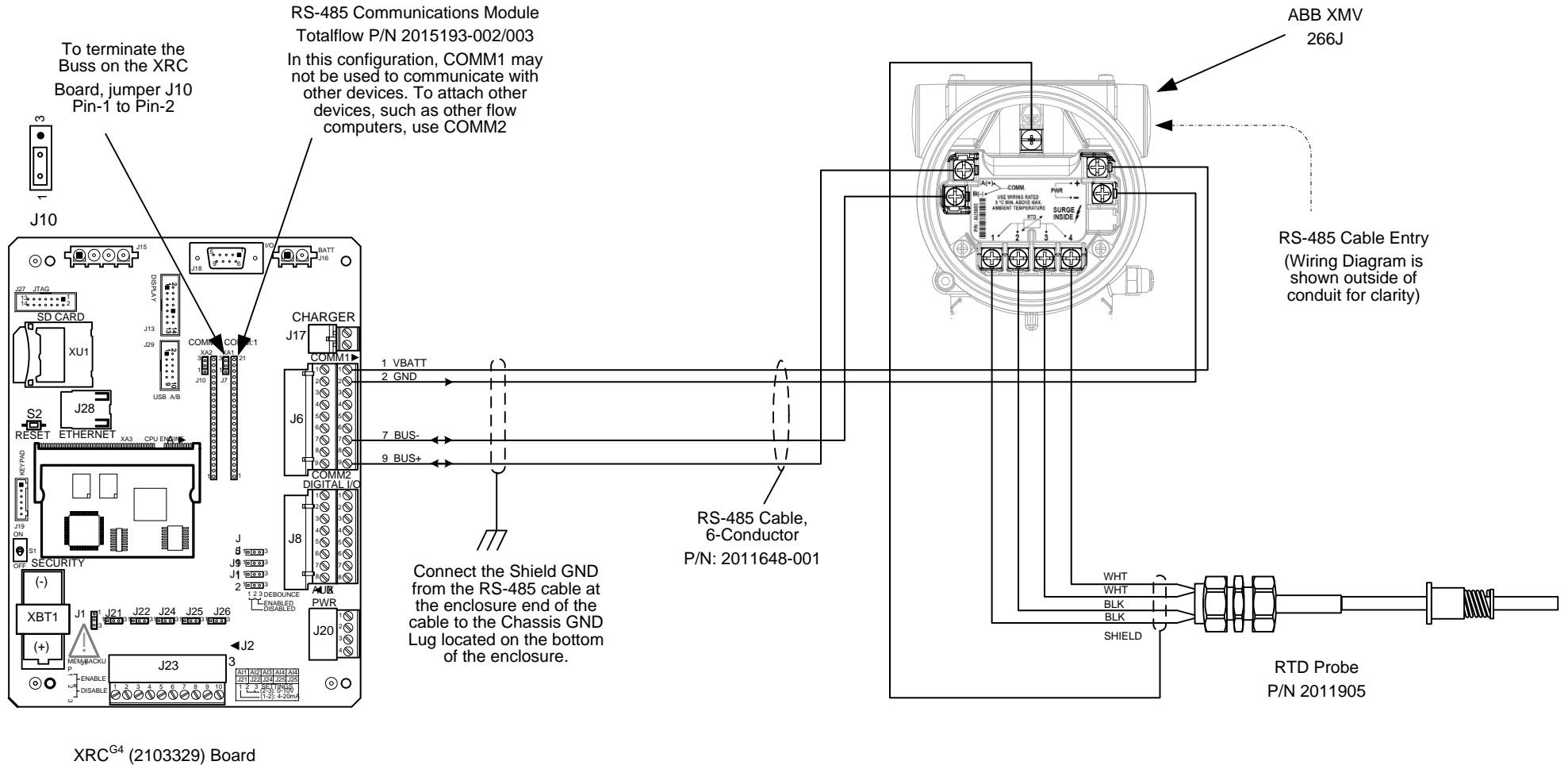


**NOTES:**

1. **WARNING:** This drawing does not illustrate the installation methods required for hazardous locations. Prior to any installation in a Classified Hazardous Location, verify installation methods by the Control Drawing referenced on the product's name tag and national and local codes.
2. To access the XMV termination board, remove the enclosure rear cover.
3. Maximum accumulated length for the RS-485 buss is 4000 feet.



REF: N/A

	TOTALFLOW	ACTION	DOC TYPE	TITLE	DWG NO.	REV	SHEET
	Products	D35633	UD	XRC <sup>G4</sup> (2103329 BOARD) COMM1 (RS485) TO ABB 266J W/RTD	2105381	AA	1 OF 1