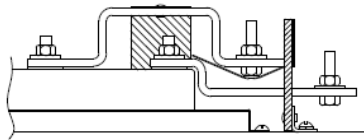


Front View

Side View

Line Bus Detail



3/8" STUD
LINE, LOAD & NEUT.
600MCM OR DUAL 350MCM
CONDUCTORS MAXIMUM WITH
APPLICABLE CONNECTOR KITS.

5X5 HUB OPENING

36 5/8

#14-1/0 CU7AL
GROUND CONN

SHIELD

4 TERMINAL
LEVER OPERATED
BYPASS & CLAMPING
JAW SOCKET

MOUNTING EMBOSS
W/5/16 DIA. KO
16) PLACES

15

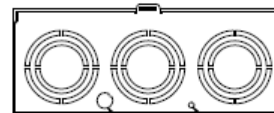
3-1/2, 3, 2-1/2, 2 KO
16) PLACES

5 11/16

Notes

- 1) FINISH: GRAY
- 2) CABINET: 16 GA GALV. STEEL
- 3) 320 AMP CONTINUOUS
600 VAC, 1 PHASE, 3 WIRE
320 AMP BYPASS
- 4) TEMPORARY CARDBOARD METER
OPENING COVER PROVIDED
- 5) MIDWEST LABEL ATTACHED TO THE
END OF THE CARTON
- 6) MIDWEST LOGO LOCATED IN THE LOWER
LEFT-HAND CORNER OF THE FRONT

Bottom View



5/16 DIA KO

1/2 KO



METER SKT-(1) 320A 600V 1P3W N3R 4-TERM LARGE HUB
OPNG TPLX GRD G90 LEVER BYP TOP FEED CECHA

CAT NO	DWG DATE	REV #
1007672MEP	02/10/2016	01