



IBERVILLE[®]

Speed up your installations

With the **NEW** low-voltage cables support solutions

Iberville simplifies installation on steel studs with our innovative gangable boxes, featuring a support bracket for low-voltage cables. This design saves electricians time and effort.

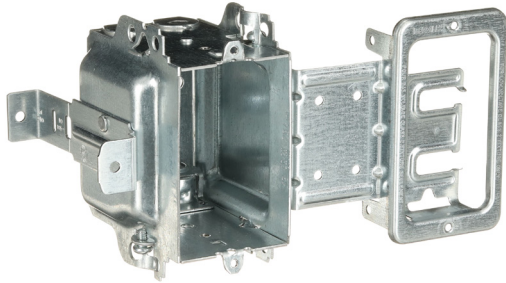
For added flexibility, the support bracket is also available separately, making cable installations easier on both steel and wood studs.

Ideal for new construction projects, condominium towers, high-rises, and any other applications where electricians need to route low-voltage cables.



Gangable boxes with low-voltage cables support bracket

Power and low-voltage on either side of the stud



General features

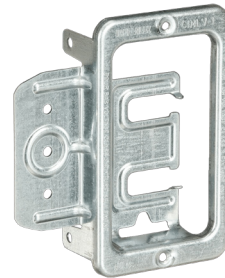
- Quick and easy installation
- Ensure perfect alignment between the box and the low-voltage cable support
- Allows easy and smooth drywall cutting
- For installation on steel studs
- Easily supports up to three cables, and up to six with the use of a cable tie

Low-voltage cables support bracket

Low-voltage cables only

General features

- Quick and easy installation
- Allows easy and smooth drywall cutting
- Can be installed on the front or side of the stud
- Can be installed with only 1 screw, using center hole
- For installation on steel and wood studs
- Easily supports up to three cables, and up to six with the use of a cable tie



No. ABB	Volume (cu. in.)	Dept (in.)	Clamp	Bracket	Qty per packaging
Gangable boxes (3 in. x 2 in.) with low-voltage cables support bracket					
BC3104-LSSAX-LV	16	2 ½	BX/Loomex	MLV-2	30
BC3104-LSSAX-LV-1	16	2 ½	BX/Loomex	MLV-2	30
BC3004-LSSAX-LV	18	3	BX/Loomex	MLV-2	30
Low-voltage cables support bracket					
CIMLV-1					50

ABB Installation Products

700 Thomas Avenue
Saint-Jean-sur-Richelieu, Quebec
J2X 2M9

tnb.ca.abb.com
Tel.: (450) 347 5318
Fax: (450) 347 1976

© 2024 ABB. All rights reserved.