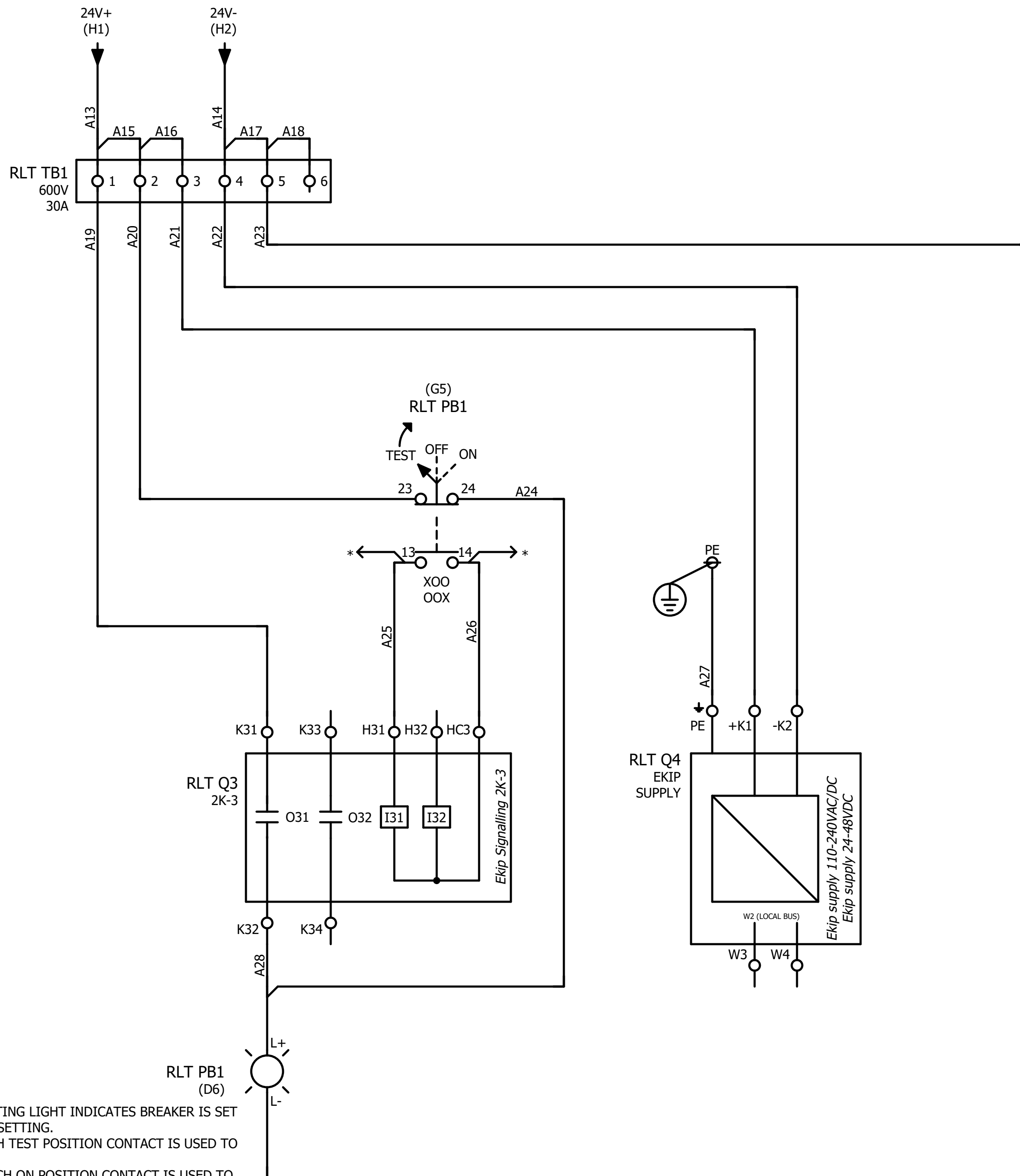
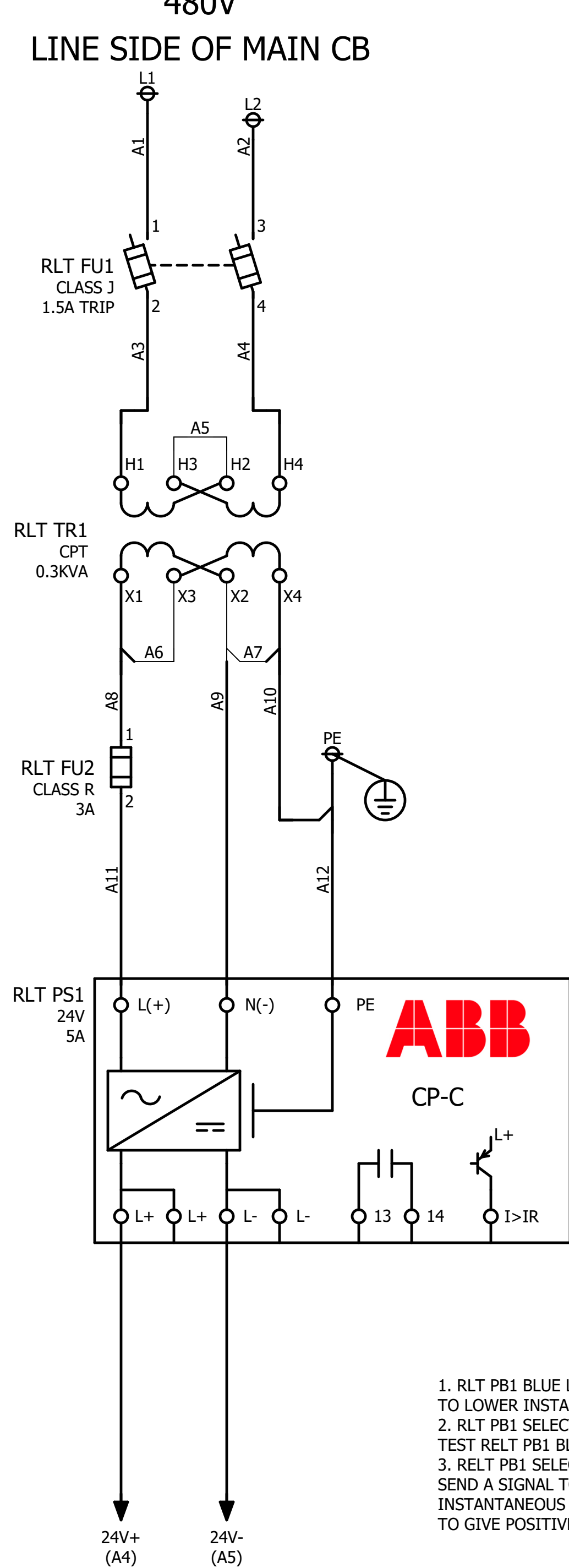


480V
LINE SIDE OF MAIN CB



1. RLT PB1 BLUE LED INDICATING LIGHT INDICATES BREAKER IS SET TO LOWER INSTANTANEOUS SETTING.
2. RLT PB1 SELECTOR SWITCH TEST POSITION CONTACT IS USED TO TEST RELT PB1 BLUE LIGHT.
3. RELT PB1 SELECTOR SWITCH ON POSITION CONTACT IS USED TO SEND A SIGNAL TO THE TRIP UNIT TO CHANGE TO THE LOW INSTANTANEOUS TRIP SETTING AND THE BLUE LED WILL ILLUMINATE TO GIVE POSITIVE FEEDBACK OF THE CHANGE ON THE TRIP UNIT.

* OPTIONAL REMOTE RELT ENABLE CONTACT

REV	DATE:	DESCRIPTION:	ISSUED BY:	ENGINEER:	Document #	PLANT: Monterrey, N.L. , México	Wiring Diagram	ORDER NUMBER:	STATUS:	MARKS:
				JMD	9AKK108469A4212	ABB	ReliaGear Switchboard	CTO STD -	Release	
				CHECKED BY:				+RELT =480V &	REQUISITION:	SHEET:
				JMD						1

Connection list

Connection	Target 1	Target 2	Color	Wire Gauge (AWG)	Function definition
A1	-L1	-RLT FU1:1	BLK	14	Conductor / wire
A2	-L2	-RLT FU1:3	BLK	14	Conductor / wire
A3	-RLT FU1:2	-RLT TR1:H1	BLK	14	Conductor / wire
A4	-RLT FU1:4	-RLT TR1:H4	BLK	14	Conductor / wire
A5	-RLT TR1:H3	-RLT TR1:H2			Saddle jumper
A6	-RLT TR1:X1	-RLT TR1:X3			Saddle jumper
A7	-RLT TR1:X2	-RLT TR1:X4			Saddle jumper
A8	-RLT TR1:X1	-RLT FU2:1	BLK	14	Conductor / wire
A9	-RLT TR1:X2	-RLT PS1:N(-)	WHT	14	Conductor / wire
A10	-RLT TR1:X4	-PE	GRN	14	Conductor / wire
A11	-RLT FU2:2	-RLT PS1:L(+)	BLK	14	Conductor / wire
A12	-PE	-RLT PS1:PE	GRN	14	Conductor / wire
A13	-RLT TB1:1	-RLT PS1:L+	BLK	14	Conductor / wire
A14	-RLT TB1:4	-RLT PS1:L-	BLK	14	Conductor / wire
A15	-RLT TB1:1	-RLT TB1:2	BLK	14	Conductor / wire
A16	-RLT TB1:2	-RLT TB1:3	BLK	14	Conductor / wire
A17	-RLT TB1:4	-RLT TB1:5	BLK	14	Conductor / wire
A18	-RLT TB1:5	-RLT TB1:6	BLK	14	Conductor / wire
A19	-RLT TB1:1	-RLT Q3:K31	BLK	14	Conductor / wire
A20	-RLT TB1:2	-RLT PB1:23	BLK	14	Conductor / wire
A21	-RLT TB1:3	-RLT Q4:+K1	BLK	14	Conductor / wire
A22	-RLT TB1:4	-RLT Q4:-K2	BLK	14	Conductor / wire
A23	-RLT TB1:5	-RLT PB1:L-	BLK	14	Conductor / wire
A24	-RLT PB1:24	-RLT PB1:L+	BLK	14	Conductor / wire
A25	-RLT PB1:13	-RLT Q3:H31	BLK	14	Conductor / wire
A26	-RLT PB1:14	-RLT Q3:HC3	BLK	14	Conductor / wire
A27	-PE	-RLT Q4:PE	GRN	14	Conductor / wire
A28	-RLT Q3:K32	-RLT PB1:L+	BLK	14	Conductor / wire

REV	DATE:	DESCRIPTION:	ISSUED BY:	ENGINEER:	Document #	PLANT: Monterrey, N.L. , México	ORDER NUMBER:	STATUS:	MARKS:
				JMD	9AKK108469A4212		CTO STD -	Release	
				CHECKED BY:			Connection list : A1 - A28	ITEM.SECT / FUNC / DOC TYPE	REQUISITION:
				JMD		ReliaGear Switchboard	+RELT =480V &		2