

We reserve all rights in this document and in the information contained therein. Reproduction, use or disclosure to third parties without express authority is strictly forbidden. © ABB 19

| Pos. Läge | H connects H förbinder |
|--------------|---------------------------|
| 1 | 1 - 15 |
| 2 | 2 - 15 |
| 3 | 3 - 15 |
| 4 | 4 - 15 |
| 5 | 5 - 15 |
| 6 | 6 - 15 |
| 7 | 7 - 15 |
| 8 | 8 - 15 |
| 9 | 9 - 15 |

On-load tap-changer type UZEL., UZFL., 9 tap positions, linear switching.

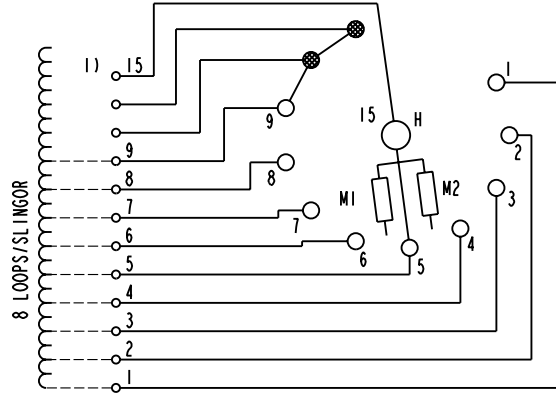
Max. effective No. of turns in pos. 1.

The tap-changer is delivered set in pos. 5.

Lindningskopplare typ UZEL., UZFL., 9 lägen, linjär koppling.

Max. antal effektiva varv i läge 1.

Lindningskopplaren levereras inställd i läge 5.



The tap-changer is shown in pos. 5

Lindningskopplaren visad i läge 5

H Main contact

M1, M2 Transition contacts

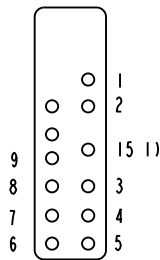
Huvudkontakt

Motståndskontakter

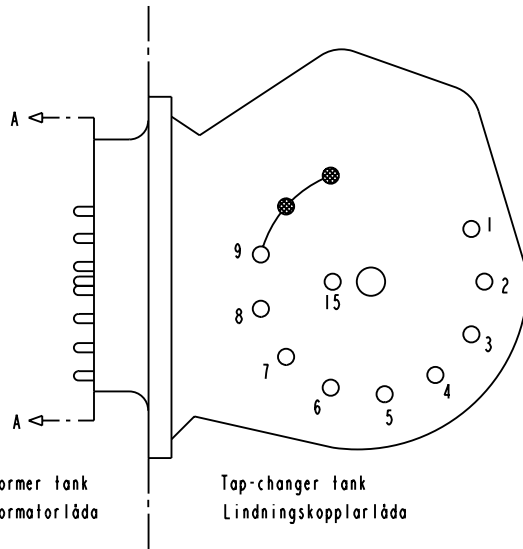
1) Connections between the terminals 15 of the three phases are included in the star-point type.

Förbindningar mellan uttag 15 i de tre faserna ingår i nollpunktsutförandet.

Terminal board
Plint



Section A-A
Sektion A-A



Transformer tank
Transformatorlåda

Tap-changer tank
Lindningskopplarlåda

| | |
|-------------------|--------------------------|
| Sheet | Cont |
| Year | Week |
| Dept | |
| Rev Ind | Revision |
| Appd | Year Week |
| Design checked by | Accepted for prod by |
| Design checked by | Drawn by |
| Design checked by | Issued by Dept Year Week |
| Form No. | |

| | | | | |
|--------------------------|--------------------------|----------------------------|---|---------------|
| - | - | - | - | - |
| Accepted by qual control | Accepted for prod by | Description (English) | | DATA ORIGINAL |
| R. Yngvesson | | CONNECTION DIAGRAM | | |
| Design checked by | Drawn by | Description (own language) | | File name |
| B-O. Stenestam | L. Bergman | KOPPLINGSSCHEMA | | 0393-5 |
| Drawing checked by | Issued by Dept Year Week | | | Lang |
| M. Hedlund | COM/TKO 97 33 | | | Sheet |
| | | | | Rev Ind |
| | | | | Cont |



Asea Brown Boveri

5492 0393-5