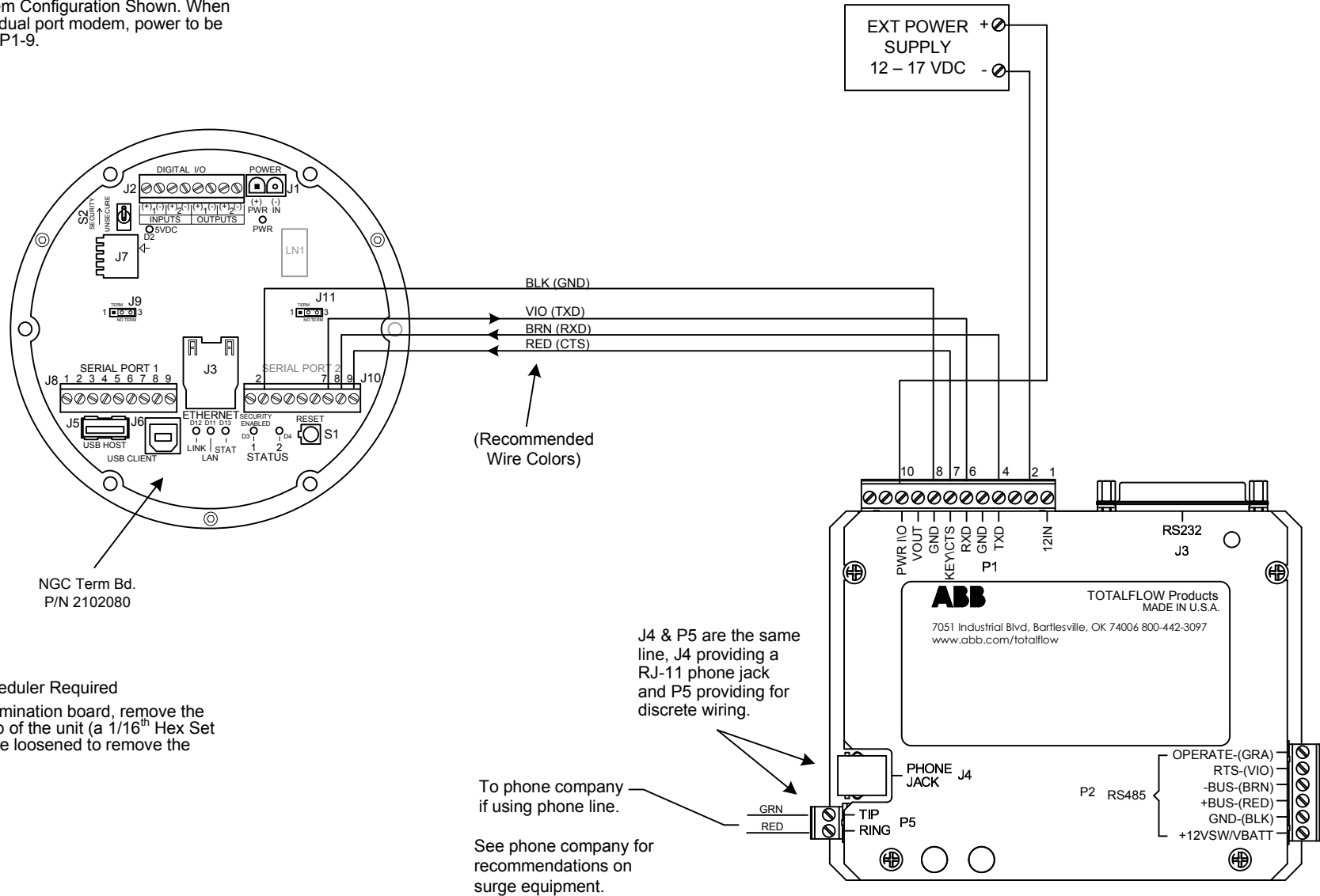


NOTES:

1. All installations in hazardous locations must comply with requirements listed by certification drawings related to this equipment. Check for the certification number on the nameplate and follow the specified requirements of this equipment.
2. Dial-Up Modem Configuration Shown. When using dial-up dual port modem, power to be connected to P1-9.



NGC Term Bd.
P/N 2102080

3. Software Scheduler Required
4. To access termination board, remove the Rear End Cap of the unit (a 1/16th Hex Set Screw must be loosened to remove the Cap).

REF: N/A

ABB TOTALFLOW Products	ACTION	DOC TYPE	TITLE	DWG NO.	REV	SHEET
	D19393	UD	UCI2 W/EXT CONTINUOUS PWR TO NGC8206 (2102080 BD) PORT 2 (RS-232)	2102477	AB	1 OF 1