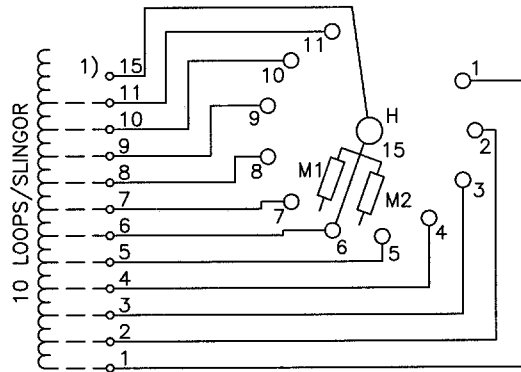


Pos. Läge	H connects H förbinder
1	1 - 15
2	2 - 15
3	3 - 15
4	4 - 15
5	5 - 15
6	6 - 15
7	7 - 15
8	8 - 15
9	9 - 15
10	10 - 15
11	11 - 15

On-load tap-changer type UZEL., UZFL., 11 tap positions, linear switching.
Max. effective No. of turns in pos. 1.
The tap-changer is delivered set in pos. 6.

Lindningskopplare typ UZEL., UZFL., 11 lägen, linjär koppling.
Max. antal effektiva varv i läge 1.
Lindningskopplaren levereras inställd i läge 6.



The tap-changer is shown in pos. 6
Lindningskopplaren visad i läge 6

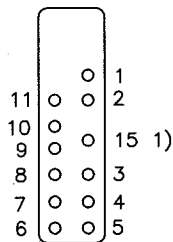
H Main contact M1, M2 Transition contacts
Huvudkontakt Motståndskontakter

1) Connections between the terminals 15 of the three phases are included in the star-point type.

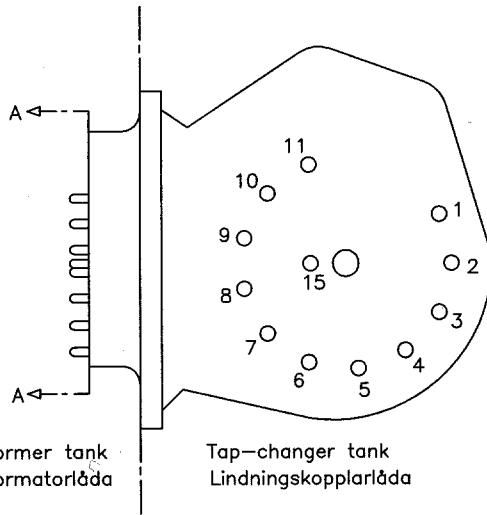
Förbindningar mellan uttag 15 i de tre faserna ingår i nollpunktsutförandet.

We reserve all rights in this document and in the information contained therein. Reproduction, use or disclosure to third parties without express authority is strictly forbidden. © ABB '19

Terminal board
Plint



Section A-A
Sektion A-A



Transformer tank
Transformatorlåda

Tap-changer tank
Lindningskopplarlåda

Drawn by Form No.	Sheet	Cont						
	Year	Week	Dept	Rev	Ind	Appd	Year	Week
	Accepted by qual control R.Yngvesson		Accepted for prod by		Description (English) CONNECTION DIAGRAM			DATA ORIGINAL
	Design checked by B-O.Stenestam		Drawn by L.Bergman		Description (own language) KOPPLINGSSCHEMA			File name 0393-7
Drawing checked by M.Hedlund		Issued by Dept Year Week COM/TKO 97 33		5492 0393-7			Lang	Sheet
Asea Brown Boveri		Revind	Cont					
								-