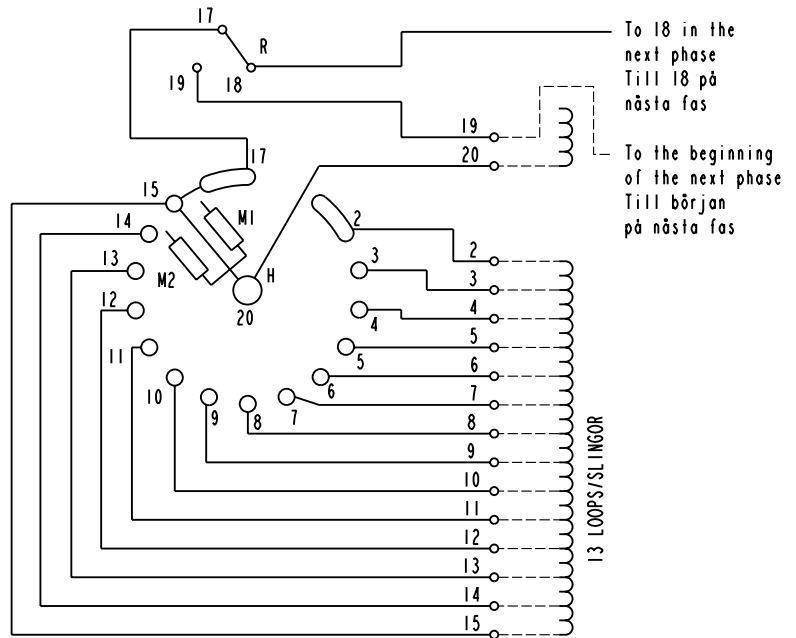


We reserve all rights in this document and in the information contained therein. Reproduction, use or disclosure to third parties without express authority is strictly forbidden. © ABB 19

Pos. Lage	R connects förbinder	H connects förbinder
1	17-18 Y	2-20
2		3-20
3		4-20
4		5-20
5		6-20
6		7-20
7		8-20
8		9-20
9		10-20
10		11-20
11		12-20
12		13-20
13		14-20
14		15-20
14A	17-19 D	17-20
14B		
15B		
15A		2-20
15		3-20
16		4-20
17		5-20
18		6-20
19		7-20
20		8-20
21		9-20
22		10-20
23		11-20
24		12-20
25	13-20	
26	14-20	
27	15-20	
28		

On-load tap-changer type UZEYD, UZFYD, Y/D switching, 14 positions in Y and 14 positions in D. Max effective No. of turns in pos. 1 and in pos. 15. The tap-changer is delivered set in pos. 14.

Lindningskopplare typ UZEYD, UZFYD, Y/D koppling, 14 lägen i Y och 14 lägen i D. Max antal effektiva varv i läge 1 och läge 15. Lindningskopplaren levereras inställd i läge 14.



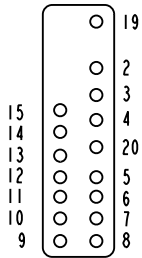
The tap-changer is shown in pos. 14  
Lindningskopplaren visad i läge 14

- R Y/D change-over selector  
Y/D-omkopplare
- H Main contact  
Huvudkontakt
- M1, M2 Transition contacts  
Motståndskontakter

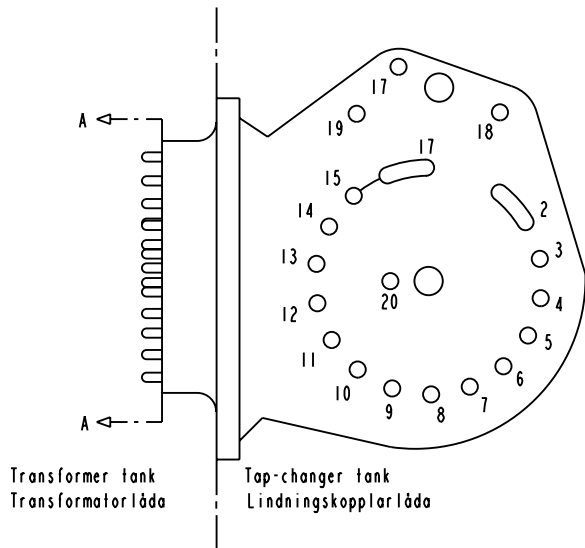
When operating from pos. 14 to 15 and from 15 to 14 the transformer must be de-energized.

Vid manöver från läge 14 till 15 och från 15 till 14 måste transformatorn vara spänningslös.

Terminal board  
Plint



Section A-A  
Sektion A-A



Sheet	Cont				
Year	Week				
Dept					
Rev	Ind	Revision	Appd	Year	Week
		Accepted by qual control R. Yngvesson	Accepted for prod by	Description (English) CONNECTION DIAGRAM	
		Design checked by B-O. Stenestam	Drawn by L. Bergman	Description (own language) KOPPLINGSSHEMA	
		Drawing checked by M. Hedlund	Issued by Dept COM/TKO	Year 97	Week 34
Drawn by	Form No.	ABB Asea Brown Boveri		5492 0399-10	
				Lang	Sheet
				1	1
				RevInd	Cont
				-	-