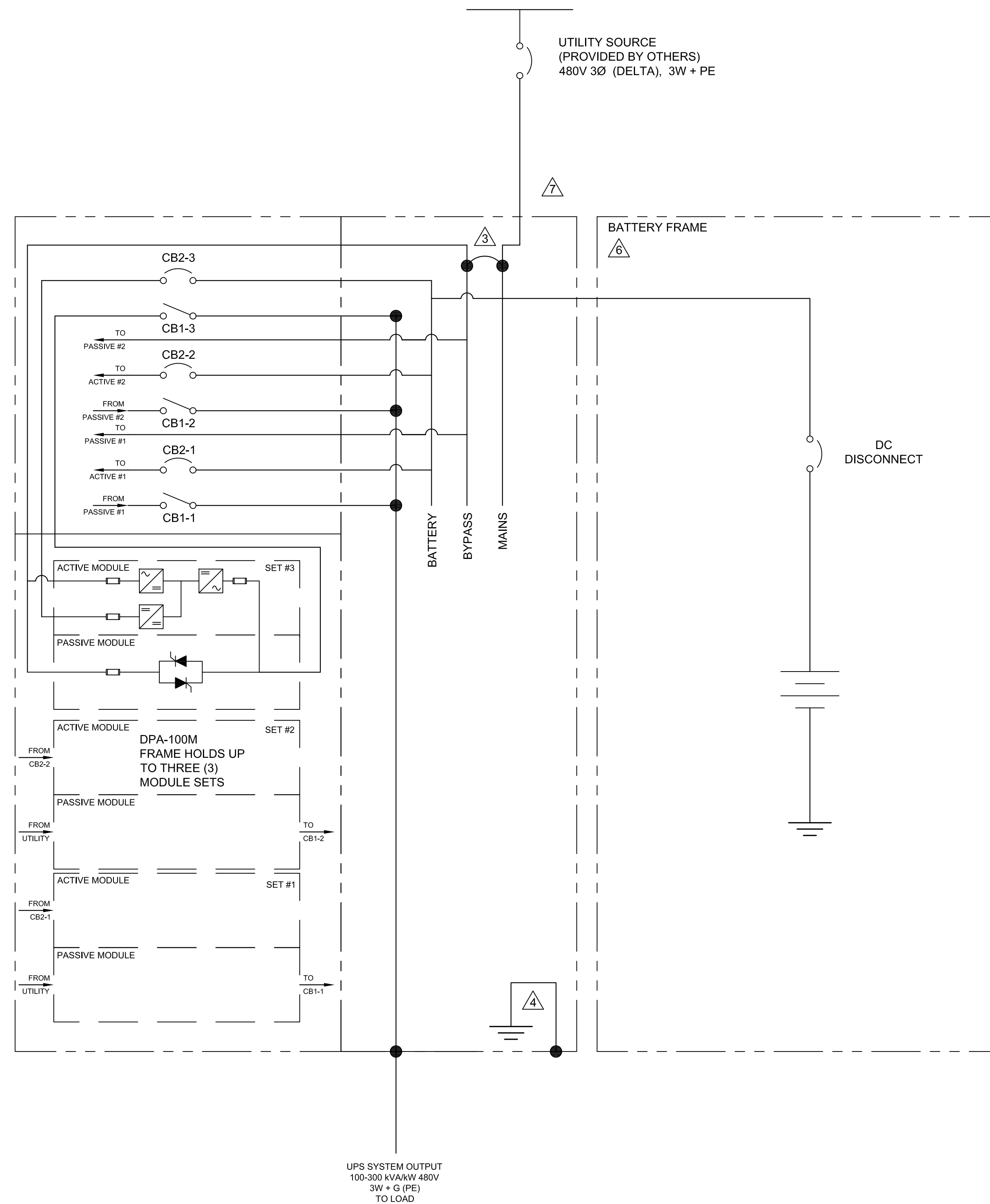


We reserve all rights in this document and in the information contained therein. Reproduction, use or disclosure to third parties without express authority is strictly prohibited. © Copyright 2014 ABB.



UPS System Ratings							
The values below are design ratings per phase. Consult the values below when selecting appropriate upstream AC over current protective devices (OCPD).							
UPS Rating (kW)	DPA Modules	Rectifier AC Input Current (A)		Battery Current (A)		Bypass Current (A)	Output Current (A)
		Nominal	Maximum	Nominal	Max [EOC]		
100	1	123	138	189	225	121	120
200	2	246	276	378	450	243	241
300	3	368	413	567	675	364	361

OCPD Recommendations				
The values below are design ratings per phase. Consult the values below when selecting appropriate upstream AC over current protective devices (OCPD).				
UPS Rating (kW)	Rectifier AC Input	DC Input	Bypass AC Input & AC Output	Maintenance Bypass AC Input
	80% Rated / 100% Rated	80% Rated / 100% Rated	80% Rated / 100% Rated	80% Rated / 100% Rated
100	200A / 150A	400A / 250A	200A / 150A	200A / 150A
200	400A / 400A	600A / 600A	400A / 400A	400A / 400A
300	600A / 600A	800A / 800A	600A / 400A	600A / 400A

Device Rating				
Device	Rating	Type	Make	Model
CB1-1,2,3	225A, 600V	3P MCS	ABB	XT3
CB2-1,2,3	250A, 600V DC	4P MCCB	ABB	XT4

NOTES:

- INSTALLATION SHALL COMPLY WITH ALL APPLICABLE NATIONAL, STATE AND LOCAL CODES.
- REFER TO PRODUCT DOCUMENTATION FOR ADDITIONAL DETAILS PRIOR TO INSTALLATION AND SITE PREPARATION WORK.
- UPS IS CONFIGURED AS SINGLE INPUT FEED (STANDARD). OPTIONAL DUAL INPUT FEED IS AVAILABLE BY REMOVING BUS BAR OR CABLE JUMPERS BETWEEN RECTIFIER MAINS AND BYPASS INPUT TERMINALS. CONSULT FACTORY AND USER MANUAL FOR DUAL FEED CONFIGURATION.
- AVAILABLE AS 3-WIRE CONFIGURATION (STANDARD). CONSULT FACTORY FOR 4-WIRE CONFIGURATIONS.
- CONNECT RECTIFIER AND BYPASS INPUT CABLES IN CLOCKWISE PHASE ROTATION.
- UPS CABINET DOES NOT PROVIDE SPACE FOR BATTERIES. EXTERNAL BATTERIES MUST BE PROVIDED BY OTHERS AND HOUSED IN CABINETS OR SHELVES/RACKS. SEE OPERATIONS MANUAL FOR DETAILS.
- AC CABLING SHALL BE 600V RATED, 3W + G (PE).

A00	-	CAB	Initial Release	11/8/2016
Rev.	ECN#	Resp.	Description	Date
Revision Table				
Part must comply with company doc. 94-10-000001. Interpret drawing in accordance with ASME Y14.5-2009.			Document Kind Electrical Schematic	Title CONCEPTPOWER DPA 300 480V UL SYSTEM ONELINE DISTRIBUTION SINGLE INPUT FEED
Tolerance X.XX = ±.030 X.XXX = ±.015 Hole = ±.005 Angle = ±1/2"	Prepared JTV	Reference N/A	Scale Inch N:N	Sheet Size D
Approved CAB	Division/Dept. DMPC/Power Protection	Item No. 94-7300-00000087	Item Rev. A00	Date Drawn 9/21/2016
Document ID ONE-00089486			Doc. Rev. A00	Page 1 / 1

